



Part Number : [15388060](#)

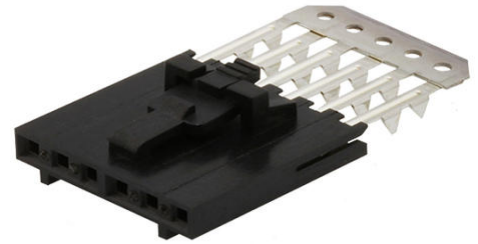
Product Description : SL Single Row, Female, Version G Receptacle, Tin (Sn) Plating, 6 Circuits

Series Number : 70430

Status : Active

Product Category : FFC / FPC Connectors

Engineering Part Number : 704300145



Documents and Resources

Drawings

[015388060_sd.pdf](#)

[PK-70873-0001-001.pdf](#)

3D Models and Design Files

[STEP AP242](#)

[SOLIDWORKS](#)


[Creo](#)

Specifications

[PS-70430-001.pdf](#)

Product Environment Compliance

Compliance

| | |
|--------------------|---|
| GADSL/IMDS | Compliant with Exemption 44; 33 |
| China RoHS |  per SJ/T 11365-2006 |
| EU ELV | Not Relevant |
| Low-Halogen Status | Not Low-Halogen per IEC 61249-2-21 |
| REACH SVHC | Not Contained per D(2025)7771-DC (04 Feb 2026) |
| EU RoHS | Compliant per EU 2015/863 |

[Compliance Statements](#)

- EU RoHS

- REACH SVHC
- Low-Halogen

Industry Documents

- IPC 1752A Class C
- IPC 1752A Class D
- Molex Product Compliance Declaration
- IEC-62474
- chemSHERPA (xml)

Substances of Interest

- PFAS

EU RoHS Certificate of Compliance

Additional Product Compliance Information

Part Details

General

| | |
|--------------|---|
| Status | Active |
| Category | FFC / FPC Connectors |
| Series | 70430 |
| Description | SL Single Row, Female, Version G Receptacle, Tin (Sn) Plating, 6 Circuits |
| Product Name | SL |
| UPC | 800754218535 |

Agency

| | |
|-----|---------|
| CSA | LR19880 |
| UL | E29179 |

Electrical

| | |
|-------------------------------|------------|
| Current - Maximum per Contact | 1.0A, 2.0A |
| Voltage - Maximum | 250V |

Physical

| | |
|--------------------|-------|
| Actuator Type | N/A |
| Circuits (Loaded) | 6 |
| Circuits (maximum) | 6 |
| Color - Resin | Black |

| | |
|--------------------------------|-----------------|
| Contact Position | N/A |
| Durability (mating cycles max) | 25 |
| Material - Metal | Phosphor Bronze |
| Material - Plating Mating | Tin |
| Material - Plating Termination | Tin |
| Material - Resin | Polyester |
| Net Weight | 0.974/g |
| Number of Rows | 1 |
| Orientation | Vertical |
| Packaging Type | Tube |
| PCB Mounting | N/A |
| PCB Retention | N/A |
| Pitch - Mating Interface | 2.54mm |
| Pitch - Termination Interface | 2.54mm |
| Plating min - Mating | 3.810µm |
| Plating min - Termination | 1.905µm |
| Polarized to PCB | N/A |
| Stackable | Yes |
| Temperature Range - Operating | -40° to +105°C |
| Wire/Cable Type | FFC/FPC |

Mates With / Use With

Mates with Part(s)

| Description | Part Number |
|---|--------------|
| SL Single Row Housing Panel Mounts | <u>70018</u> |
| SL Single Row Crimp Housings | <u>70107</u> |
| SL Vertical Single Row Headers | <u>70541</u> |
| SL Vertical Single Row Headers | <u>70543</u> |
| SL Vertical Single Row Headers | <u>70545</u> |
| SL Right-Angle Single Row Headers | <u>70551</u> |
| SL Right-Angle, Single Row, Low Profile Headers | <u>70553</u> |
| SL Right-Angle Single Row | <u>70555</u> |

| | |
|--|--------------|
| Headers | |
| SL Right-Angle, Single Row, Low Profile, Surface Mount Headers | <u>70634</u> |
| SL Vertical, Single Row, Surface Mount Headers | <u>74099</u> |

Application Tooling

Global

| Description | Part Number |
|---|------------------|
| Tool Kit for Standard Manual Press FFC | <u>622007400</u> |
| Standard Manual Press for FFC | <u>622007800</u> |
| FFC 2 thru 20 Circuit Termination Kit for use in the Molex TM-3000 or TM-4000 press installed into the TM-42 Replacement Crimp Module | <u>638018550</u> |

This document was generated on Jun 01, 2026