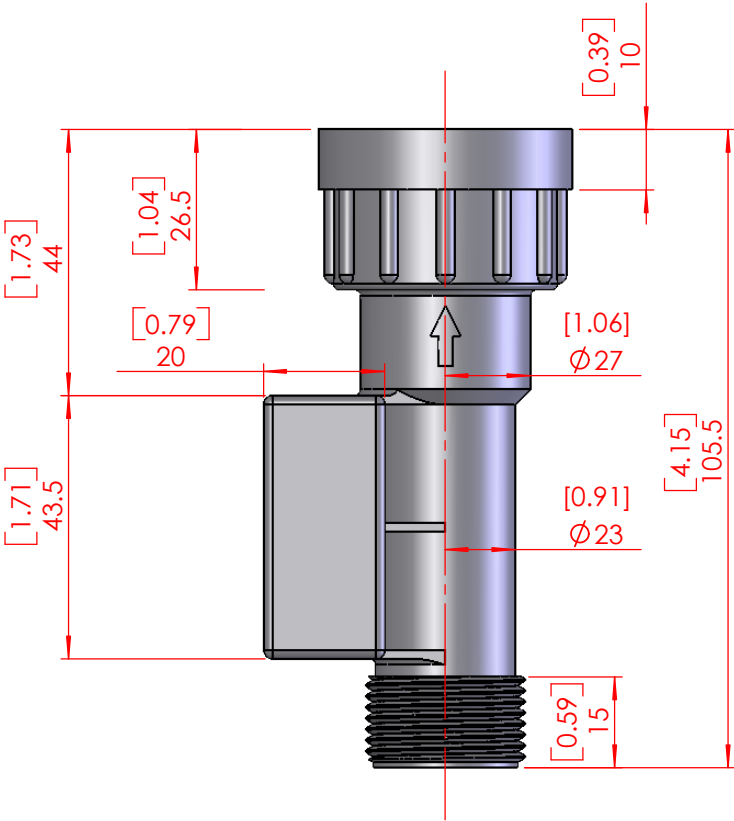
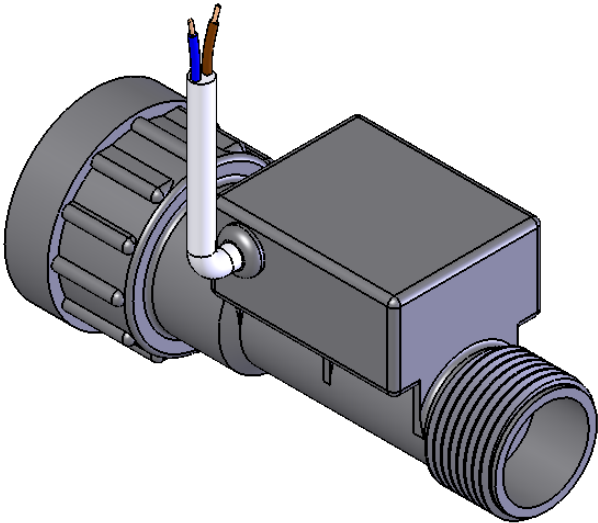
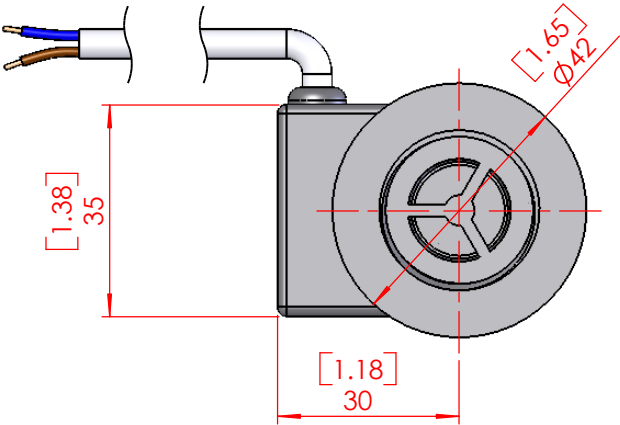


PARTS LIST			
ITEM NO.	ARTICLE NO.	DESCRIPTION	QTY. REQD



Sensor Specifications	
Mounting	Flow Switch Vertical
Fitting	Flow Switch 3/4" BSP
Max Switching Volts	250 VRMS
Max Switching Current	3.0A
Contact Material	Triac
Sensor Material	Noryl
Medium/Liquid	Water
Operating Temperature Range	85degC
Operating Pressure	10 BAR
Cable Type	0.5mm^2 BS6500 PVC double insulated
Cable Length	1.0M
Cable Colours	White outer Blue/Brown inner
Mounting Shock	50g for 11ms duration
Mounting Vibration	35g up to 500Hz
Approvals	Meets UL 94-HB flammability rating
Mounting	Flow Switch Vertical

REVISION	A	B	C	D	UNLESS OTHERWISE SPECIFIED DIMENSIONS ARE IN MILLIMETRES TOLERANCES ARE DECIMALS ANGLES	CAD GENERATED DRAWING DO NOT MANUALLY DUPLICATE	GENTECH INTERNATIONAL LIMITED GIRVAN, AYRSHIRE, U.K.						
CHANGE ORDER	-												
DATE	-												
APPROVED	-												
MATERIAL			FINISH		DRAWN	NRW 28.06.05	PART NAME			FS-01			
THIS DRAWING IS THE PROPERTY OF GENTECH International Limited AND SHOULD NOT BE COPIED OR USED FOR MANUFACTURE OR OTHERWISE DISCLOSED WITHOUT THE PRIOR WRITTEN CONSENT OF THE COMPANY ©					CHECKED		IH	28.06.05		ARTICLE NO.		84019-000	
					APPROVED		IH	28.06.05					
										DO NOT SCALE DRAWING			