



ISOCOM
COMPONENTS

H11L1, H11L1V



DESCRIPTION

The H11L1 (UL Approval) and H11L1V (UL and VDE Approvals) devices each consist of a GaAs infrared emitting diode optically coupled to a high speed open collector output integrated Microprocessor compatible Schmitt Trigger detector, which provides hysteresis for noise immunity and pulse shaping.

FEATURES

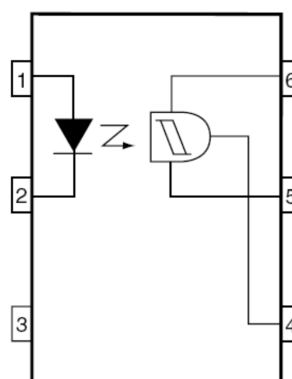
- High Data Rate, 1MHz typical (NRZ)
- Free from Latch Up and Oscillation
- Microprocessor Compatible Drive
- Logical Compatible Output sinks 16mA at 0.4V maximum
- Guaranteed On/Off Threshold Hysteresis
- Wide Supply Voltage Capability, compatible with all popular Logic Systems
- Operating Voltage Range V_{CC} 3V to 16V
- Operating Temperature Range - 55°C to +100°C
- High AC Isolation voltage 5000V_{RMS}
- Lead Free and RoHS Compliant
- UL Approval Certificate E91231
- VDE Approval Certificate 40044376

APPLICATIONS

- Logic to Logic isolator
- Line Receiver - eliminate noise and transient problems
- Programmable Current Level Sensor
- AC to TTL Conversion - Square Wave Shaping
- Power Supply Digital Programming
- Computer Peripherals Interface

ORDER INFORMATION

- Add G after PN for 10mm lead spacing
- Add SM after PN for Surface Mount
- Add SMT&R after PN for Surface Mount Tape & Reel



- 1 Anode
- 2 Cathode
- 3 NC
- 4 V_O
- 5 GND
- 6 V_{CC}

ABSOLUTE MAXIMUM RATINGS ($T_A = 25^\circ\text{C}$)

Stresses exceeding the absolute maximum ratings can cause permanent damage to the device. Exposure to absolute maximum ratings for long periods of time can adversely affect reliability.

Input

Forward Current	60mA
Reverse Voltage	6V
Power dissipation	120mW

Output

Output Current	50mA
Output Voltage	3 to 16V
Supply Voltage	0 to 16V
Power Dissipation	150mW

Total Package

Isolation Voltage	5000V _{RMS}
Total Power Dissipation	250mW
Operating Temperature	-55 to 100°C
Storage Temperature	-55 to 125°C
Lead Soldering Temperature (10s)	260°C

ISOCOM COMPONENTS 2004 LTD

Unit 25B, Park View Road West, Park View Industrial Estate
Hartlepool, Cleveland, TS25 1PE, United Kingdom
Tel : +44 (0)1429 863 609 Fax : +44 (0)1429 863 581
e-mail : sales@isocom.co.uk
<http://www.isocom.com>

ISOCOM COMPONENTS ASIA LTD

Hong Kong Office
Block A, 8/F, Wah Hing Industrial Mansions
36 Tai Yau Street, San Po Kong, Kowloon, Hong Kong
Tel : +852 2995 9217 Fax : +852 8161 6292
e-mail : sales@isocom.com.hk

H11L1, H11L1V

Truth Table

LED	V _O
ON	LOW
OFF	HIGH

ELECTRICAL CHARACTERISTICS (T_A = 25°C, unless otherwise specified. Typical Values at T_A = 25°C)

INPUT

Parameter	Symbol	Test Condition	Min	Typ.	Max	Unit
Forward Voltage	V _F	I _F = 10mA		1.15	1.5	V
Reverse Current	I _R	V _R = 5V			10	μA
Input Capacitance	C _{IN}	V = 0V, f = 1MHz			100	pF

OUTPUT

Parameter	Symbol	Test Condition	Min	Typ.	Max	Unit
Operating Voltage	V _{CC}		3		15	V
Supply Current	I _{CC(off)}	V _{CC} = 5V, I _F = 0mA		1.6	5	mA
High Level Output Current	I _{OH}	I _F = 0mA, V _{CC} = V _O = 15V			100	μA

H11L1, H11L1V

ELECTRICAL CHARACTERISTICS ($T_A = 25^\circ\text{C}$, unless otherwise specified, Typical Values at $T_A = 25^\circ\text{C}$)

COUPLED

Parameter	Symbol	Test Condition	Min	Typ.	Max	Unit
Supply Current	$I_{CC(on)}$	$V_{CC} = 5V, I_F = 10mA$		1.6	5	mA
Low Level Output Voltage	V_{OL}	$V_{CC} = 5V, I_F = I_{F(on)} (max), R_L = 270\Omega$			0.4	V
Turn-On Threshold Current	$I_{F(on)}$	$V_{CC} = 5V, R_L = 270\Omega$			1.6	mA
Turn-Off Threshold Current	$I_{F(off)}$	$V_{CC} = 5V, R_L = 270\Omega$		1		mA
Hysteresis Ratio	$I_{F(off)}/I_{F(on)}$	$V_{CC} = 5V, R_L = 270\Omega$	0.5		0.9	
Turn-On Time	$t_{(on)}$	$V_{CC} = 5V, I_F = I_{F(on)} (max), R_L = 270\Omega$			4	μs
Fall Time	t_f			0.1		
Turn-Off Time	$t_{(off)}$				4	
Rise Time	t_r			0.1		

ISOLATION

Parameter	Symbol	Test Condition	Min	Typ.	Max	Unit
Isolation Voltage	V_{ISO}	R.H. = 40% to 60%, $t = 1 \text{ min}$, Note 1	5000			V_{RMS}
Isolation Resistance	R_{ISO}	$V_{I-O} = 500VDC$ R.H. = 40% to 60%	10^{11}			Ω

Note 1 : Measured with input leads shorted together and output leads shorted together.



H11L1, H11L1V

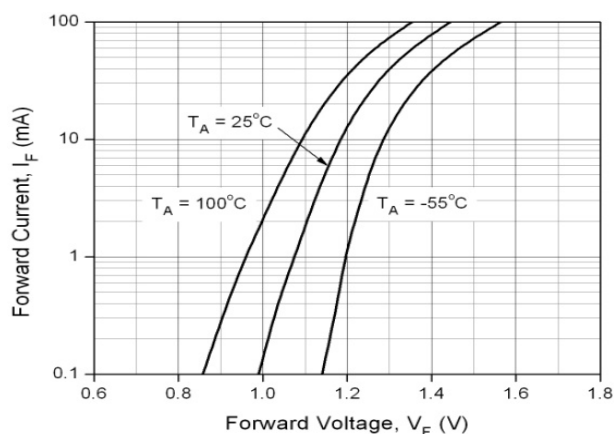


Fig 1 Forward Current vs Forward Voltage

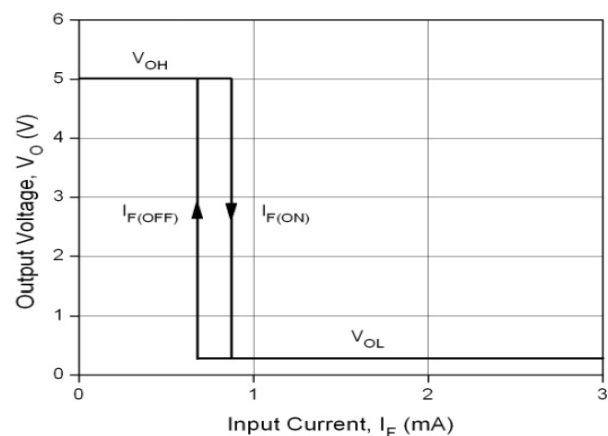


Fig 2 Transfer Characteristics

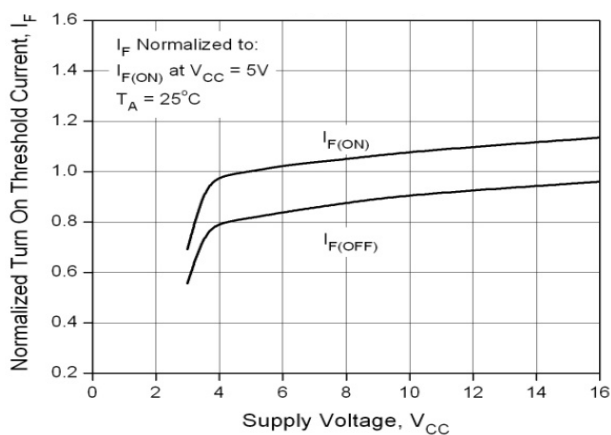


Fig 3 Normalized Turn-On Current vs Supply Voltage

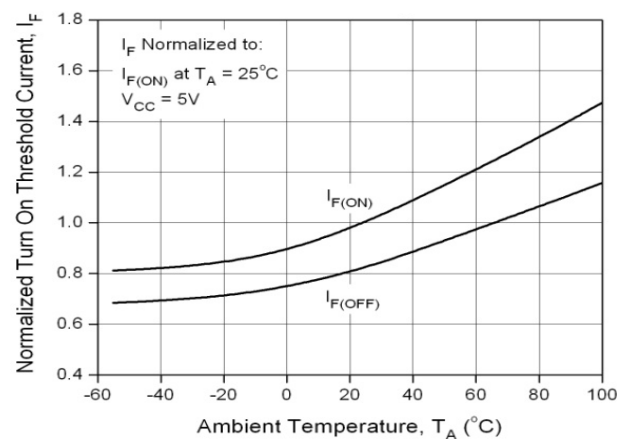


Fig 4 Normalized Turn-On Current vs Ambient temperature

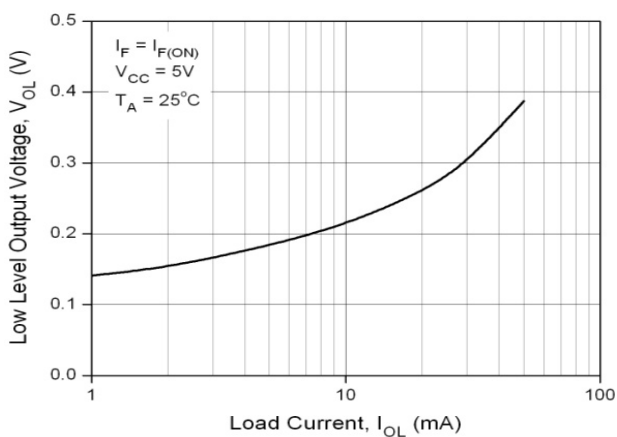


Fig 5 Low Level Output Voltage vs Load Current

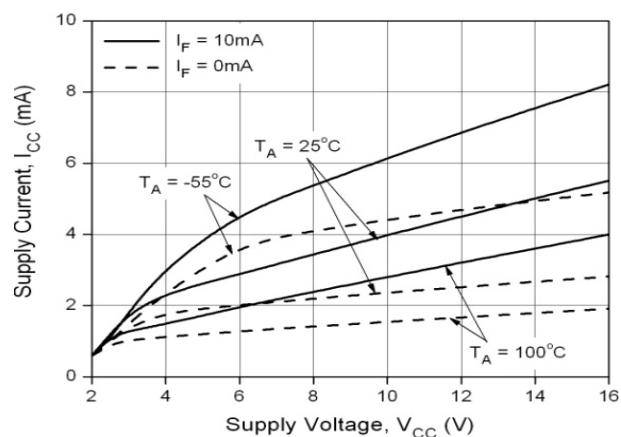
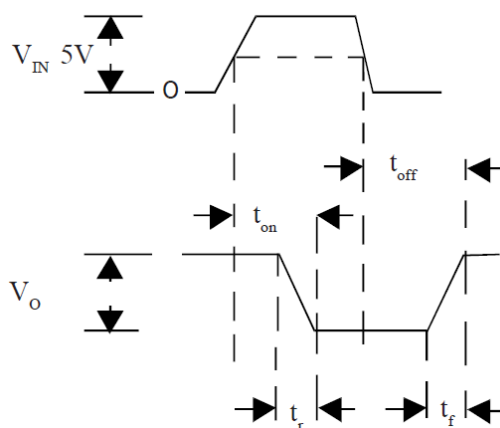
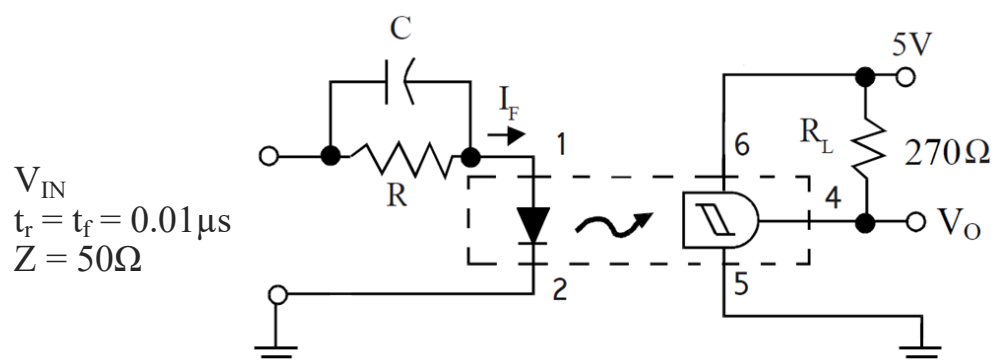


Fig 6 Supply Current vs Supply Voltage



H11L1, H11L1V



Switching Time Test Circuit and Waveform

H11L1, H11L1V

ORDER INFORMATION

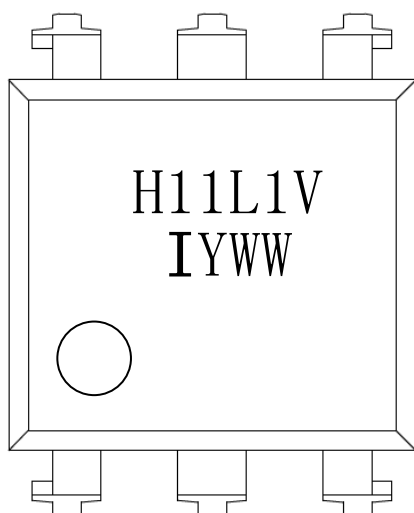
H11L1 (UL Approval)			
After PN	PN	Description	Packing quantity
None	H11L1	Standard DIP6	65 pcs per tube
G	H11L1G	10mm Lead Spacing	65 pcs per tube
SM	H11L1SM	Surface Mount	65 pcs per tube
SMT&R	H11L1SMT&R	Surface Mount Tape & Reel	1000 pcs per reel

H11L1V (UL Approval and VDE Approvals)			
After PN	PN	Description	Packing quantity
None	H11L1V	Standard DIP6	65 pcs per tube
G	H11L1VG	10mm Lead Spacing	65 pcs per tube
SM	H11L1VSM	Surface Mount	65 pcs per tube
SMT&R	H11L1VSMT&R	Surface Mount Tape & Reel	1000 pcs per reel

H11L1, H11L1V

DEVICE MARKING

Example : H11L1V



H11L1V	Device Part Number
I	Isocom
Y	1 digit Year code
WW	2 digit Week code

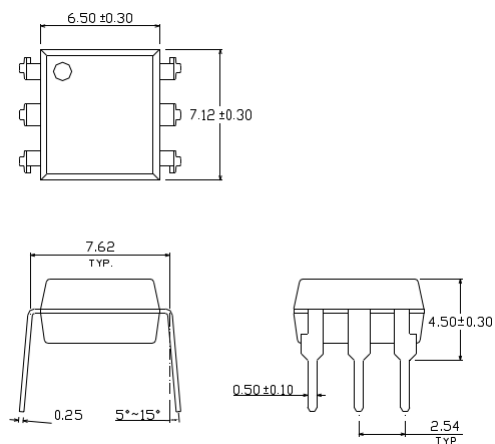


ISOCOM
COMPONENTS

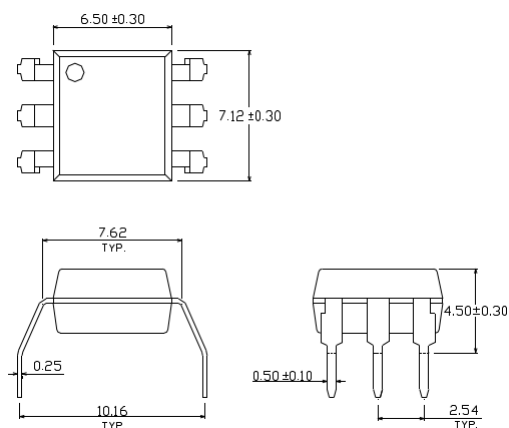
H11L1, H11L1V

PACKAGE DIMENSIONS in mm (inch)

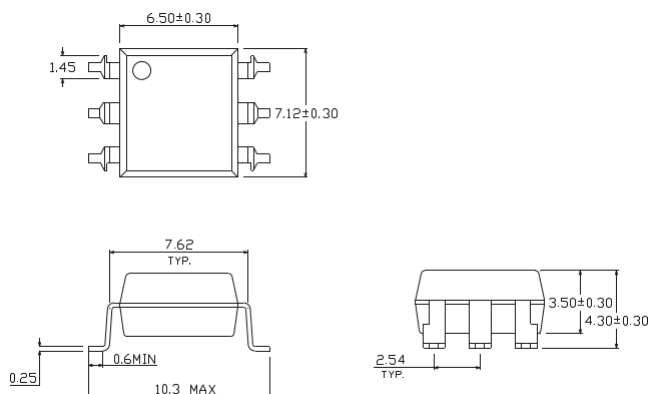
DIP



G Form



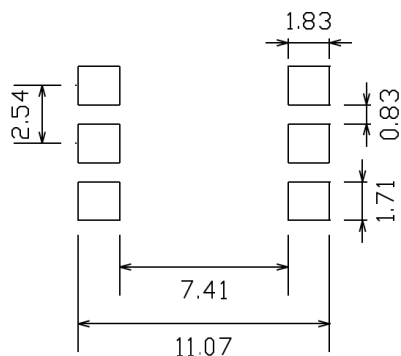
SMD



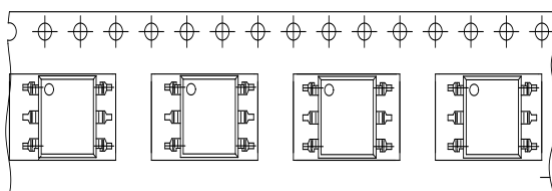


H11L1, H11L1V

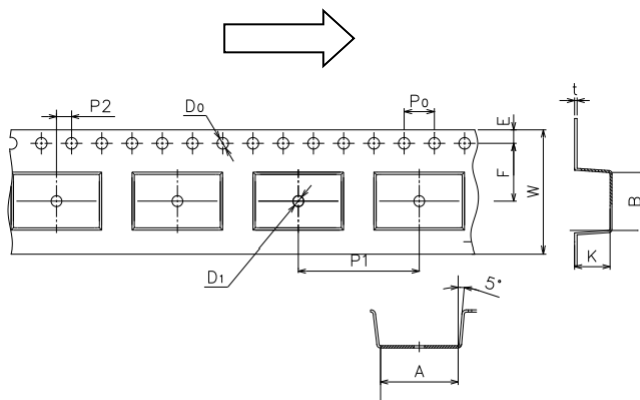
RECOMMENDED PAD LAYOUT FOR SMD (mm)



TAPE AND REEL PACKAGING



Direction of feed from reel

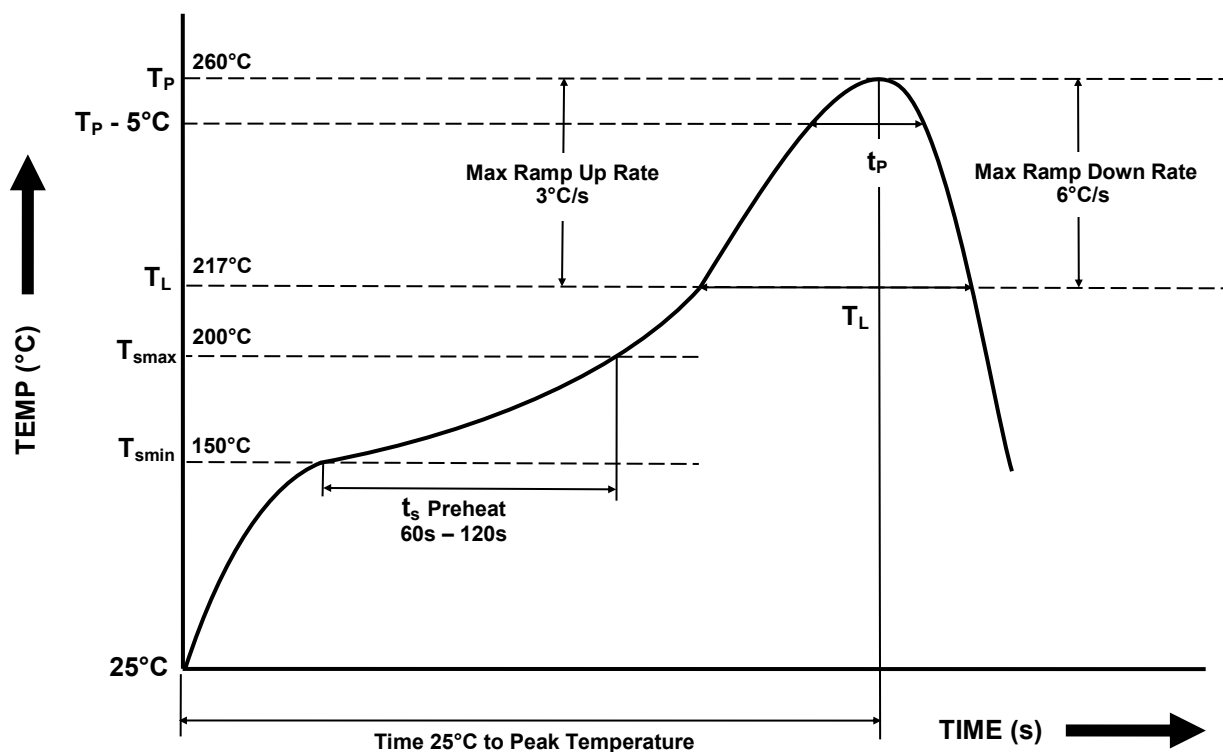


Dimension No.	A	B	Do	D1	E	F
Dimension(mm)	10.8±0.1	7.55±0.1	1.5±0.1	1.5+0.1/-0	1.75±0.1	7.5±0.1
Dimension No.	Po	P1	P2	t	W	K
Dimension (mm)	4.0±0.15	12.0±0.1	2.0±0.1	0.35±0.03	16.0±0.2	4.5±0.1



H11L1, H11L1V

IR REFLOW SOLDERING TEMPERATURE PROFILE (One Time Reflow Soldering is Recommended)



Profile Details	Conditions
Preheat <ul style="list-style-type: none">- Min Temperature (T_{SMIN})- Max Temperature (T_{SMAx})- Time T_{SMIN} to T_{SMAx} (t_s)	150°C 200°C 60s - 120s
Soldering Zone <ul style="list-style-type: none">- Peak Temperature (T_P)- Time at Peak Temperature- Liquidous Temperature (T_L)- Time within 5°C of Actual Peak Temperature (T_P - 5°C)- Time maintained above T_L (t_L)- Ramp Up Rate (T_L to T_P)- Ramp Down Rate (T_P to T_L)	260°C 10s max 217°C 30s max 60s - 100s 3°C/s max 6°C/s max
Average Ramp Up Rate (T _{smax} to T _P)	3°C/s max
Time 25°C to Peak Temperature	8 minutes max

DISCLAIMER

Isocom Components is continually working to improve the quality and reliability of its products. Nevertheless, semiconductor devices in general can malfunction or fail due to their inherent electrical sensitivity and vulnerability to physical stress. It is the responsibility of the buyer, when utilizing Isocom Components products, to comply with the standards of safety in making a safe design for the entire system, and to avoid situations in which a malfunction or failure of such Isocom Components products could cause loss of human life, bodily injury or damage to property.

In developing your designs, please ensure that Isocom Components products are used within specified operating ranges as set forth in the most recent Isocom Components products specifications.

The Isocom Components products listed in this document are intended for usage in general electronics applications (computer, personal equipment, office equipment, measuring equipment, industrial robotics, domestic appliances, etc.). These Isocom Components products are neither intended nor warranted for usage in equipment that requires extraordinarily high quality and/or reliability or a malfunction or failure of which may cause loss of human life or bodily injury ("Unintended Usage"). Unintended Usage include atomic energy control instruments, airplane or spaceship instruments, transportation Instruments, traffic signal instruments, combustion control instruments, medical Instruments, all types of safety devices, etc... Unintended Usage of Isocom Components products listed in this document shall be made at the customer's own risk.

Gallium arsenide (GaAs) is a substance used in the products described in this document. GaAs dust and fumes are toxic. Do not break, cut or pulverize the product, or use chemicals to dissolve them. When disposing of the products, follow the appropriate regulations. Do not dispose of the products with other industrial waste or with domestic garbage.

The products described in this document are subject to the foreign exchange and foreign trade laws.

The information contained herein is presented only as a guide for the applications of our products. No responsibility is assumed by Isocom Components for any infringements of intellectual property or other rights of the third parties which may result from its use. No license is granted by implication or otherwise under any intellectual property or other rights of Isocom Components or others.

The information contained herein is subject to change without notice.