



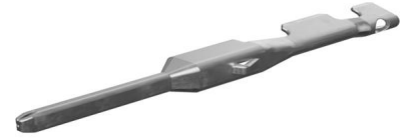
Part Number : [330000003](#)

Product Description : MX150 Male Terminal for Mat-Sealed or Unsealed Connectors, Tin Plating, 22 AWG, Right Reel Payoff

Series Number : 33000

Status : Active

Product Category : Crimp Terminals



Documents and Resources

Drawings

[330000003_sd.pdf](#)

[313025040-000.pdf](#)

[STEP AP242](#)

[SOLIDWORKS](#)

[Creo](#)

Specifications

[AS-33000-001-001.pdf](#)

[AS-33000-001-FR-001.pdf](#)


[AS-33000-001-001.pdf](#)

[PS-33012-002-001.pdf](#)

[TS-33000-001-001.pdf](#)

Product Environment Compliance

Compliance

GADSL/IMDS	Compliant with Exemption 34; 33
China RoHS	 per SJ/T 11365-2006
EU ELV	Compliant per 2000/53/EC
Low-Halogen Status	Low-Halogen per IEC 61249-2-21
REACH SVHC	Not Contained per D(2025)7771-DC (04 Feb 2026)
EU RoHS	Compliant per EU 2015/863

Compliance Statements

- EU RoHS
- REACH SVHC
- Low-Halogen

Industry Documents

- IPC 1752A Class C
- IPC 1752A Class D
- Molex Product Compliance Declaration
- IEC-62474
- chemSHERPA (xml)

Substances of Interest

- PFAS

EU RoHS Certificate of Compliance

Additional Product Compliance Information

Part Details

General

Status	Active
Category	Crimp Terminals
Series	33000
Description	MX150 Male Terminal for Mat-Sealed or Unsealed Connectors, Tin Plating, 22 AWG, Right Reel Payoff
Application	Power, Wire-to-Board, Wire-to-Wire, Automotive
Comments	For automatic and semi-automatic crimping, use Left Reel Payoff terminals. See Sales Drawing for Left Reel Payoff Part Numbers.
Product Name	MX150
UPC	800756103549

Electrical

Current - Maximum per Contact	Contact Molex
Voltage - Maximum	14V DC

Physical

Gender	Male
Grip Code	22
Material - Metal	High Performance Alloy (HPA)
Material - Plating Mating	Tin
Material - Plating Termination	Tin
Net Weight	0.290/g
Packaging Type	Reel
Plating min - Mating	0.508µm
Plating min - Termination	0.508µm
Termination Interface Style	Crimp or Compression
Wire Insulation Diameter	1.65mm max.
Wire Size (AWG)	22
Wire Size mm ²	0.50

Solder Process Data

Lead-Free Process Capability	N/A
------------------------------	-----

Mates With / Use With

Use with Part(s)

Description	Part Number
MX150 Mat-Sealed Single Row Male Connector Assemblies	33481
MX150 Mat-Sealed Dual Row Male Connector Assemblies	33482

Application Tooling

Global

Description	Part Number
Extraction Toolkit for MX150 Connectors	2002220700
PremiumGrade Hand Crimp Tool for 1.50mm MX150 Blade Male Terminals, 22-18 AWG	638112600

Extraction Tool for MX150L, MX150, PT Bulb Socket, iGrid, SPOX, and Wire-to-Motor Terminals	<u>638131500</u>
--	------------------

This document was generated on Apr 23, 2026