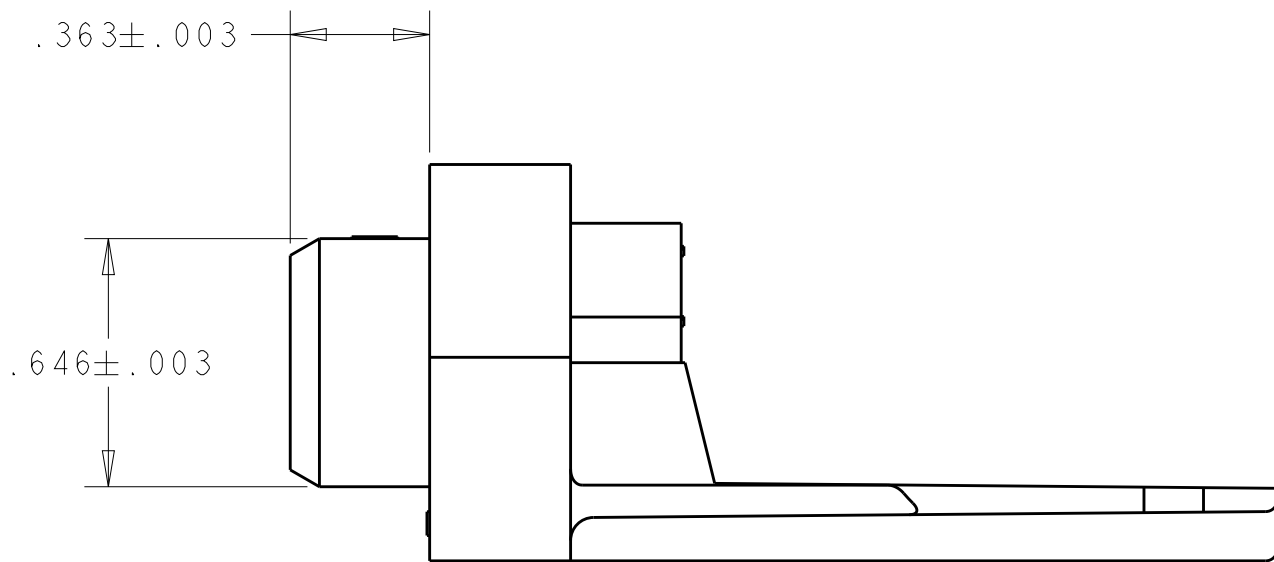
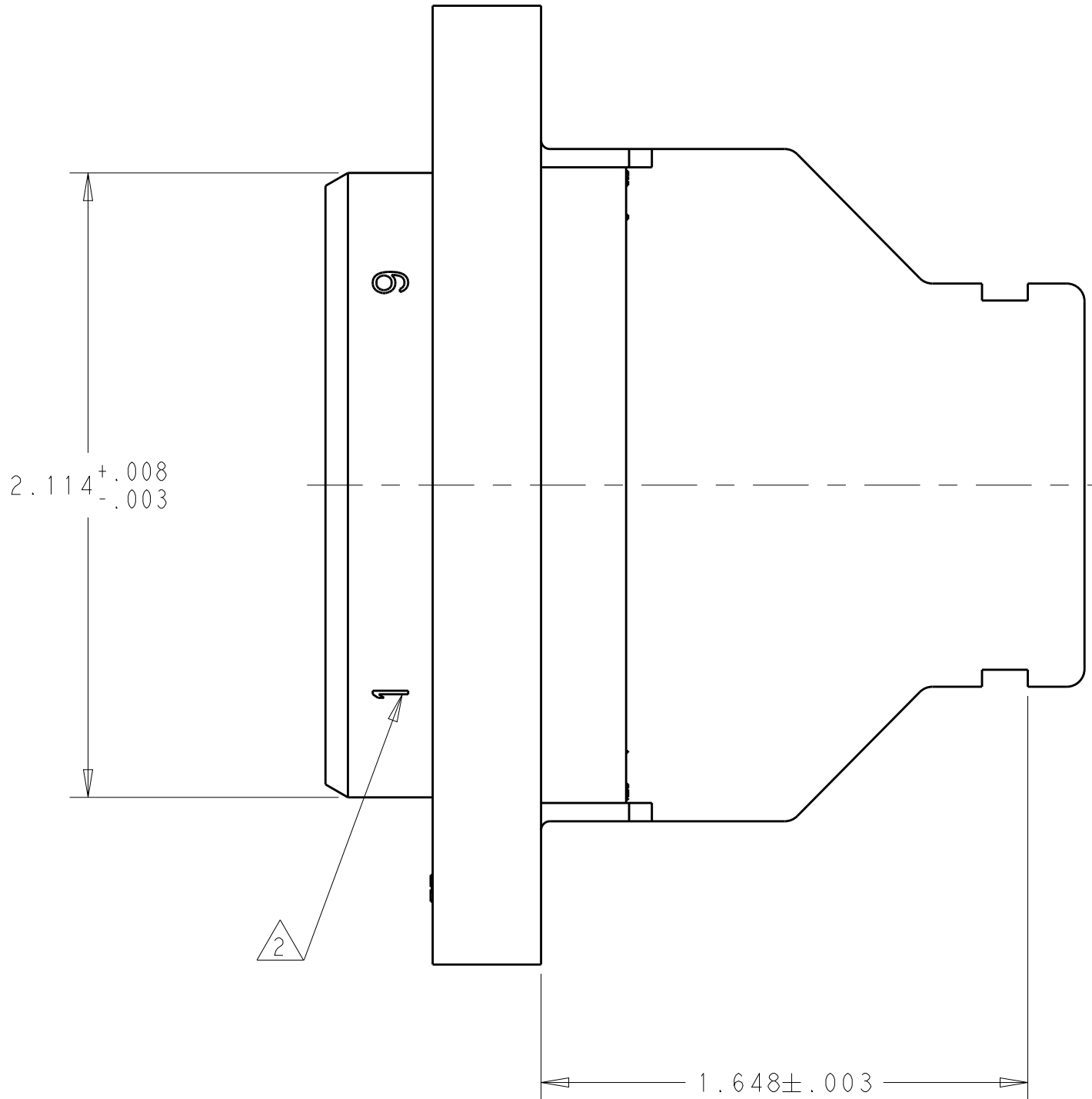
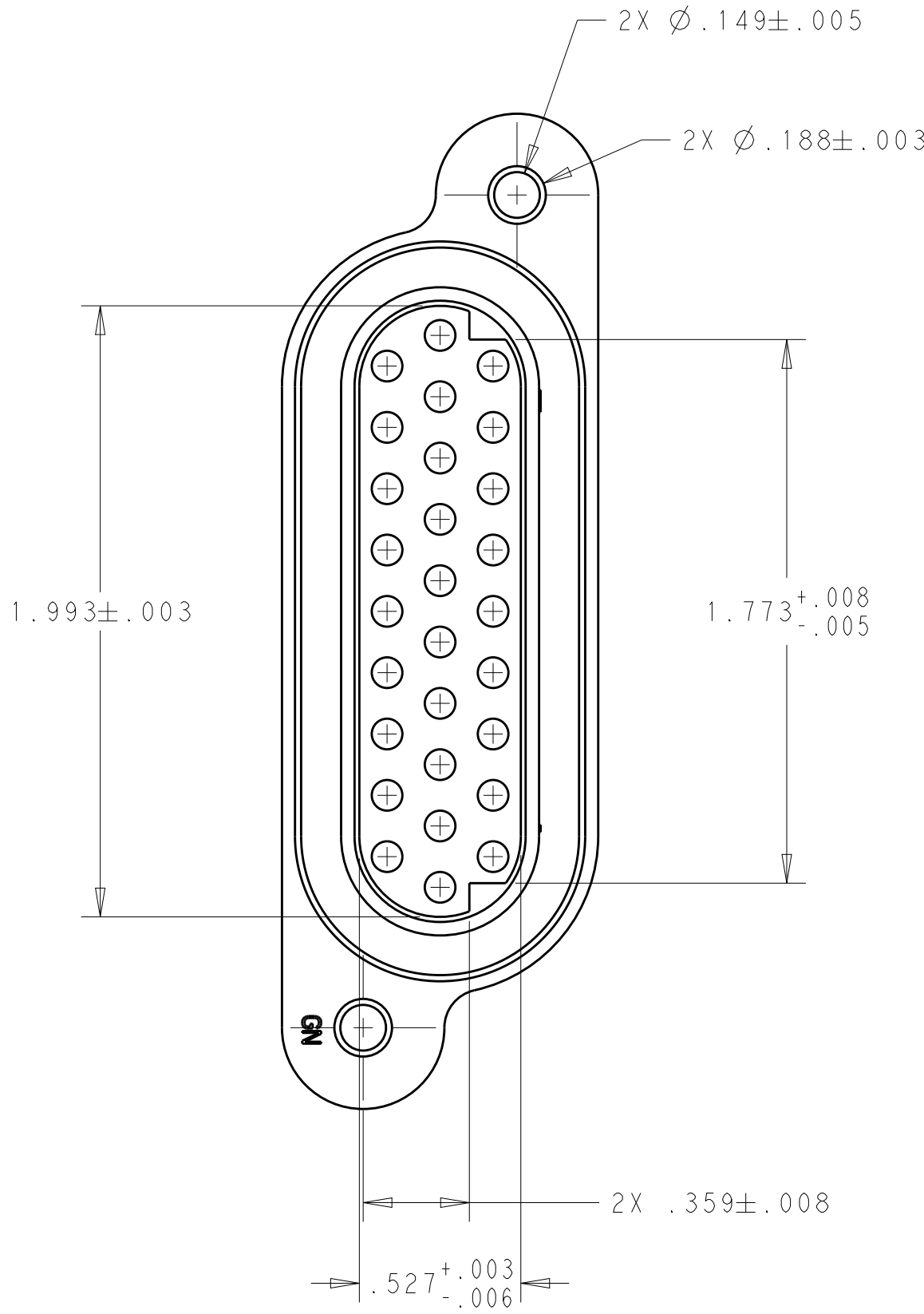
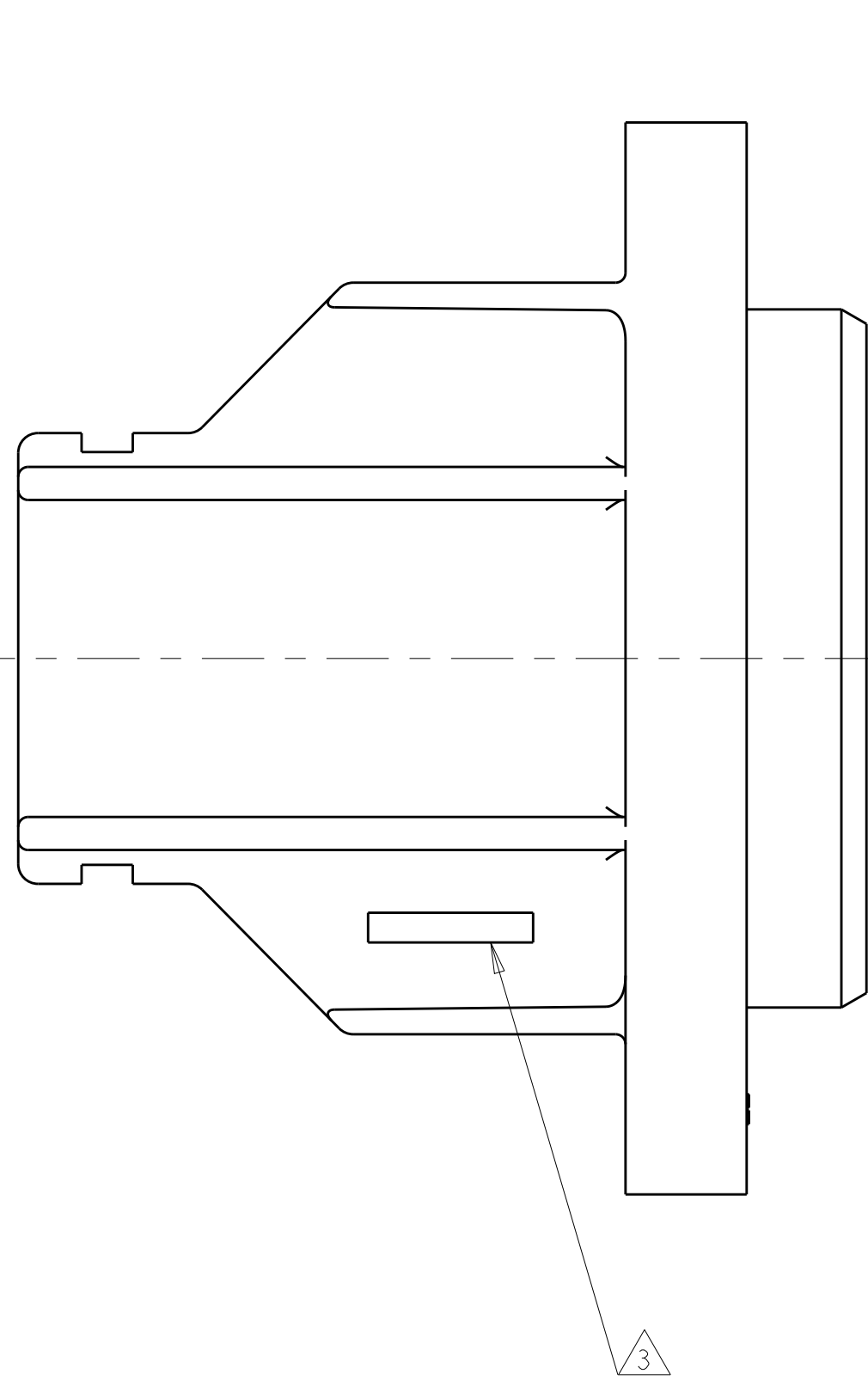



LOC		DIST		REVISIONS						
CM	00		P	LTR	DESCRIPTION	DATE	DWN	APVD		
				A	REV PER ECO-12-015596	11OCT2012	RGV	DCS		

1. CUMMINS ENGINES MUST BE INFORMED BY WAY OF A PRODUCT CHANGE IDENTIFICATION OF ALL TO THE TE CUSTOMER DRAWINGS.
- 2 BRAND CIRCUIT IDENTIFICATION NUMBERS 1 & 9 AS SHOWN (-2 ONLY).
- 3 4-DIGIT CODE TO BE BRANDED ON THIS SURFACE PER 102-60 (FIRST 2 DIGITS = YEAR, SECOND 2 DIGITS = WEEK). CHARACTERS TO BE .090 HIGH AND READILY LEGIBLE (-2 ONLY).



2	3	212983-2
-	-	212983-1
STAMPING		PART NUMBER

THIS DRAWING IS A CONTROLLED DOCUMENT.		DWN	R. VESTAL	08AUG2012	 TE Connectivity	
DIMENSIONS:		CHK	D. STRAUSSER	08AUG2012		
INCHES	TOLERANCES UNLESS OTHERWISE SPECIFIED:	APVD	D. STRAUSSER	08AUG2012	NAME	PLUG HOUSING, 28 POSITION, ECMSC