

Data Sheet | Item Number: 280-482

Jumper; 2-way; insulated; gray

<https://www.wago.com/280-482>



Color: ■ gray

Electrical data

Ratings per IEC/EN

Rated current	24 A
---------------	------

Physical data

Width	10 mm / 0.394 inches
Height	4 mm / 0.157 inches
Depth	19.2 mm / 0.756 inches
Jumper assignment	1-2

Material data

Note (material data)	Information on material specifications can be found here
Color	gray
Insulation material (main housing)	Polyamide (PA66)
Fire load	0.005 MJ
Weight	1.1 g

Commercial data

PU (SPU)	200 (25) pcs
Packaging type	Box
Country of origin	DE
GTIN	4044918683845
Customs tariff number	85366990990



Product Classification	
UNSPSC	39121421
eCl@ss 10.0	27-14-11-40
eCl@ss 9.0	27-14-11-40
ETIM 9.0	EC000489
ETIM 10.0	EC000489
ECCN	NO US CLASSIFICATION

Environmental Product Compliance	
RoHS Compliance Status	Compliant, No Exemption

Downloads

Environmental Product Compliance

Compliance Search	
Environmental Product Compliance 280-482	↓

Documentation

Bid Text			
280-482	19.02.2019	xml 2.54 KB	↓
280-482	27.04.2017	doc 23.50 KB	↓

CAD/CAE-Data

CAD data	
2D/3D Models 280-482	↓

CAE data	
EPLAN Data Portal 280-482	↓
WSCAD Universe 280-482	↓
ZUKEN Portal 280-482	↓

1 Compatible Products

1.1 Optional Accessories

1.1.1 Tool

1.1.1.1 Operating tool

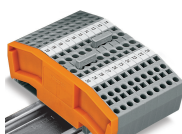


Item No.: 280-432

Operating tool; made of insulating material; 2-way; white

Installation Notes

Commoning



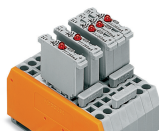
Commoning using comb-style jumper bars.
Push comb-style jumper bars down until fully inserted.

Commoning



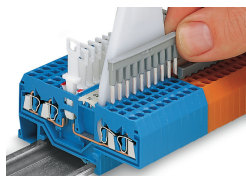
4-conductor through terminal blocks, angled type, formation of groups with 3-way, comb-style jumper bars

Commoning



Carrier terminal blocks with component plugs, alternate comb-style jumper bars, 3-way comb-style jumper bar

Commoning



Commoning front-entry disconnect terminal blocks via comb-style jumper bar using a 10-pole operating tool