



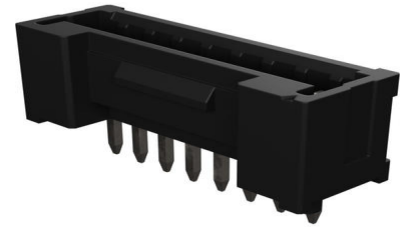
Part Number : [2200970871](#)

Product Description : 1.25mm Pitch, Micro-Lock Plus PCB Header, Single Row, Vertical, Through Hole, Tin-Bismuth Plating, Positive Lock, 8 Circuits, Low-Halogen, Black

Series Number : 220097

Status : Active

Product Category : PCB Headers and Receptacles



Documents and Resources

Drawings

[2200970871 sd.pdf](#)

3D Models and Design Files

[STEP AP242](#)

[SOLIDWORKS](#)

[Creo](#)

[Symbol and Footprint \(Multi-Format\)](#)

[2200970871.dxf](#)

Specifications

[5055650000-AS-000.pdf](#)


[2200979200-SPK-200.pdf](#)

[2045320002-PS-000.pdf](#)

[2145260003-PS-000.pdf](#)

Product Environment Compliance

Compliance

GADSL/IMDS	Compliant with Exemption 33; 44
China RoHS	 per SJ/T 11365-2006
EU ELV	Not Relevant
Low-Halogen Status	Low-Halogen per IEC 61249-2-21
REACH SVHC	Not Contained per D(2025)7771-DC (04 Feb 2026)

EU RoHS	Compliant per EU 2015/863
---------	---------------------------

Compliance Statements

- EU RoHS
- REACH SVHC
- Low-Halogen

Industry Documents

- IPC 1752A Class C
- IPC 1752A Class D
- Molex Product Compliance Declaration
- IEC-62474
- chemSHERPA (xml)

Substances of Interest

- PFAS

EU RoHS Certificate of Compliance

Additional Product Compliance Information

Part Details

General

Status	Active
Category	PCB Headers and Receptacles
Series	220097
Description	1.25mm Pitch, Micro-Lock Plus PCB Header, Single Row, Vertical, Through Hole, Tin-Bismuth Plating, Positive Lock, 8 Circuits, Low-Halogen, Black
Application	Signal, Wire-to-Board
Component Type	PCB Header
Keyword	Micro-Lock Plus 1.25
Product Name	Micro-Lock Plus
UPC	196823184215

Agency

UL	E29179
----	--------

Electrical

Current - Maximum per Contact	3.3A
-------------------------------	------

Voltage - Maximum	50V AC (RMS)/DC
-------------------	-----------------

Physical

Breakaway	No
Circuits (Loaded)	8
Circuits (maximum)	8
Color - Resin	Black
Durability (mating cycles max)	30
First Mate / Last Break	No
Flammability	94V-0
Glow-Wire Capable	No
Guide to Mating Part	No
Keying to Mating Part	Yes
Lock to Mating Part	Yes
Material - Metal	Brass
Material - Plating Mating	Tin-Bismuth
Material - Plating Termination	Tin-Bismuth
Material - Resin	Polyamide (PA)
Net Weight	216.380/mg
Number of Rows	1
Orientation	Vertical
Packaging Type	Tray
PCB Locator	No
PCB Retention	No
Pitch - Mating Interface	1.25mm
Pitch - Termination Interface	1.25mm
Plating min - Mating	1.000µm
Plating min - Termination	1.000µm
Polarized to Mating Part	Yes
Polarized to PCB	Yes
Shrouded	Shrouded
Stackable	No
Temperature Range - Operating	-40° to +105°C
Termination Interface Style	Through Hole

Mates With / Use With

Mates with Part(s)

Description	Part Number
1.25mm Pitch Micro-Lock Plus Single Row Receptacle Housings	<u>204532</u>
1.25mm Pitch Micro-Lock Plus TPA Type Single Row Receptacle Housings	<u>214526</u>

This document was generated on Apr 21, 2026