



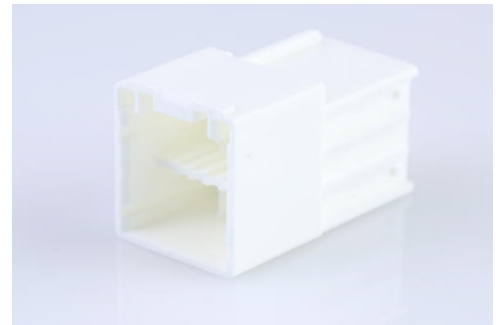
Part Number : [5056060600](#)

Product Description : CP-3.3 Plug Housing, 3.30mm Pitch, Dual Row, Polarized, Positive Inertia Lock, 6 Circuits, Natural

Series Number : 505606

Status : Active

Product Category : Connector Housings



Documents and Resources

Drawings

[5056060600_sd.pdf](#)

3D Models and Design Files

[STEP AP242](#)

[SOLIDWORKS](#)

[Creo](#)

Specifications

[5056050000-A01.pdf](#)


[5056050000-A00.pdf](#)

[5056069200-200.pdf](#)

[5056050000-000.pdf](#)

Product Environment Compliance

Compliance

| | |
|--------------------|---|
| GADSL/IMDS | Not Relevant |
| China RoHS |  per SJ/T 11365-2006 |
| EU ELV | Not Relevant |
| Low-Halogen Status | Not Low-Halogen per IEC 61249-2-21 |
| REACH SVHC | Not Contained per D(2025)7771-DC (04 Feb 2026) |
| EU RoHS | Compliant per EU 2015/863 |

Compliance Statements

- EU RoHS
- REACH SVHC
- Low-Halogen

Industry Documents

- IPC 1752A Class C
- IPC 1752A Class D
- Molex Product Compliance Declaration
- IEC-62474
- chemSHERPA (xml)

Substances of Interest

- PFAS

EU RoHS Certificate of Compliance

Additional Product Compliance Information

Part Details

General

| | |
|--------------|--|
| Status | Active |
| Category | Connector Housings |
| Series | 505606 |
| Description | CP-3.3 Plug Housing, 3.30mm Pitch, Dual Row, Polarized, Positive Inertia Lock, 6 Circuits, Natural |
| Application | Signal, Wire-to-Wire |
| Product Name | CP-3.3 |
| UPC | 889056803243 |

Agency

| | |
|----|--------|
| UL | E29179 |
|----|--------|

Physical

| | |
|--------------------|---------|
| Circuits (maximum) | 6 |
| Color - Resin | Natural |
| Flammability | 94V-0 |
| Gender | Plug |
| Glow-Wire Capable | No |

| | |
|-------------------------------|----------------------------------|
| Keying to Mating Part | Yes |
| Lock to Mating Part | Yes |
| Material - Resin | Polybutylene Terephthalate (PBT) |
| Net Weight | 2776.000/mg |
| Number of Rows | 2 |
| Packaging Type | Bag |
| Panel Mount | No |
| Pitch - Mating Interface | 3.30mm |
| Pitch - Termination Interface | 3.30mm |
| Polarized to Mating Part | Yes |
| Stackable | No |
| Temperature Range - Operating | -40° to +105°C |

Mates With / Use With

Mates with Part(s)

| Description | Part Number |
|--|-------------------|
| CP-3.3 Receptacle Housing, 3.30mm Pitch, Dual Row, Polarized, Positive Inertia Lock, 6 Circuits, Natural | <u>5056050600</u> |

Use with Part(s)

| Description | Part Number |
|--|---------------|
| CP-3.3 Terminal Position Assurance (TPA) Retainers | <u>504695</u> |
| 2.50mm and 3.30mm Pitch Male Crimp Terminals | <u>50398</u> |
| 2.50mm and 3.30mm Pitch Male Crimp Terminals | <u>505608</u> |

This document was generated on May 13, 2026