



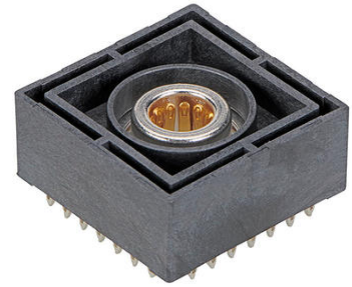
Part Number : [2151130001](#)

Product Description : Centrality 6.0mm Top-entry, Eye-of-Needle Press-fit Socket Assembly with +/- 1.00mm Self-alignment Capability, Tray

Series Number : 215113

Status : Active

Product Category : PCB Headers and Receptacles



Documents and Resources

Drawings

[2151130001_sd.pdf](#)

[2151130000-PK-000.pdf](#)

3D Models and Design Files

[STEP AP242](#)

[SOLIDWORKS](#)

[Creo](#)

[Symbol and Footprint \(Multi-Format\)](#)

Specifications

[2151130000-AS-000.pdf](#)


[2151130000-PS-000.pdf](#)

[2043131234-TS-000.pdf](#)

[2151130000-TS-000.pdf](#)

Product Environment Compliance

Compliance

GADSL/IMDS	Not Relevant
China RoHS	 per SJ/T 11365-2006
EU ELV	Not Relevant
Low-Halogen Status	Low-Halogen per IEC 61249-2-21
REACH SVHC	Not Contained per D(2025)7771-DC (04 Feb 2026)

EU RoHS

Compliant per EU 2015/863

Compliance Statements

- EU RoHS
- REACH SVHC
- Low-Halogen

Industry Documents

- IPC 1752A Class C
- IPC 1752A Class D
- Molex Product Compliance Declaration
- IEC-62474
- chemSHERPA (xml)

Substances of Interest

- PFAS

EU RoHS Certificate of ComplianceAdditional Product Compliance Information**Part Details****General**

Status	Active
Category	PCB Headers and Receptacles
Series	215113
Description	Sentrality 6.0mm Top-entry, Eye-of-Needle Press-fit Socket Assembly with +/- 1.00mm Self-alignment Capability, Tray
Application	Board-to-Board, Busbar-to-Board, Power
Comments	Current and voltage performances are dependent upon application variables.
Component Type	PCB Receptacle
Product Name	Sentrality
UPC	193264760411

Agency

CSA	LR19980
UL	E29179

Electrical

Current - Maximum per Contact	140.0A
Voltage - Maximum	600V

Physical

Breakaway	No
Circuits (Loaded)	1
Circuits (maximum)	1
Diameter	6.00mm
Durability (mating cycles max)	200
First Mate / Last Break	No
Glow-Wire Capable	No
Guide to Mating Part	Yes
Height Above Board	11.84mm
Material - Metal	Copper Alloy
Material - Plating Mating	Gold
Material - Plating Termination	Silver
Mating Orientation	Top-entry
Net Weight	11.801/g
Number of Rows	1
Orientation	Vertical
Packaging Type	Tray
PCB Retention	No
Pitch - Mating Interface	N/A
Polarized to Mating Part	No
Polarized to PCB	No
Temperature Range - Operating	-40° to +125°C
Termination Interface Style	Through Hole - Compliant Pin

Mates With / Use With

Mates with Part(s)

Description	Part Number
Sentrality Pins	<u>203263</u>

This document was generated on Apr 13, 2026