

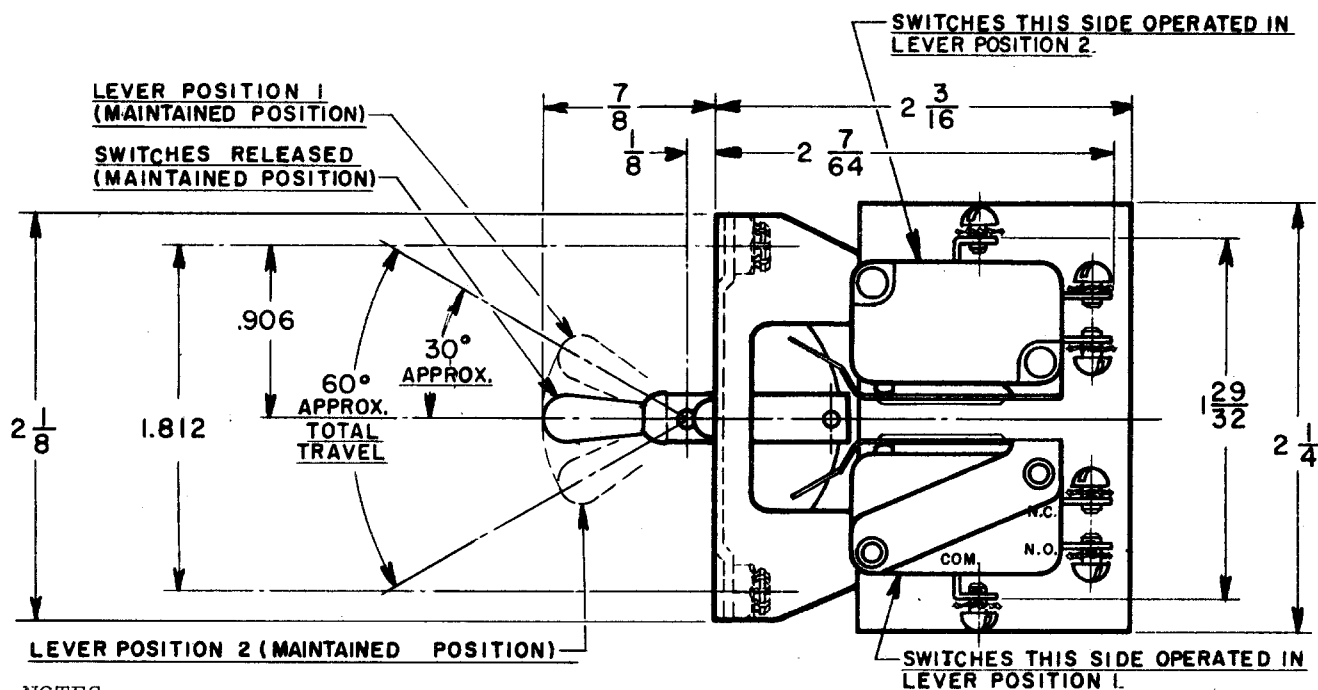
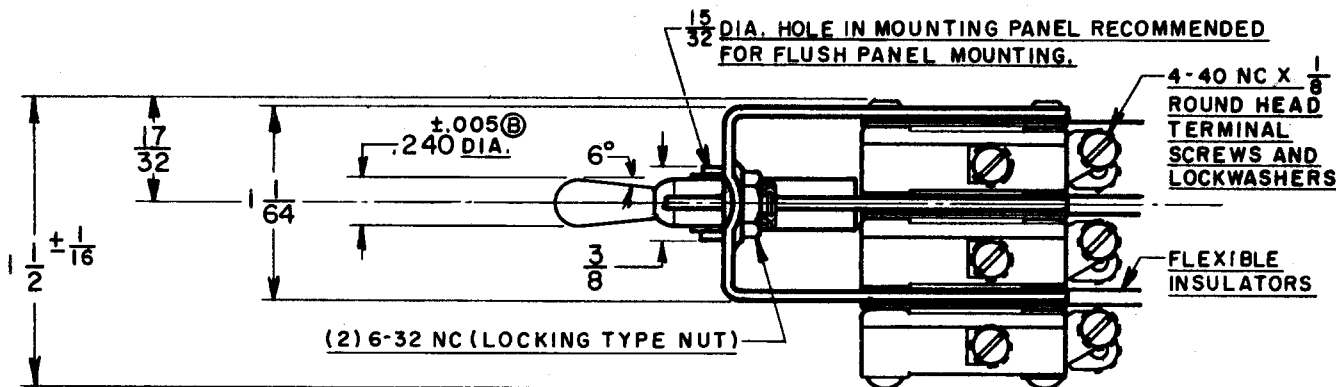
MICRO SWITCH

A DIVISION OF MINNEAPOLIS-HONEYWELL REGULATOR COMPANY
PESAPORT, ILLINOIS
FED. MFR. CODE 91929

ASSEMBLY - TOGGLE SWITCH

CATALOG LISTING

7AT4



NOTES

- 1 - N.C. TO C. CIRCUIT IS MADE WHEN SWITCH IS RELEASED. N.O. TO C. CIRCUIT IS MADE WHEN SWITCH IS OPERATED
- 2 - UNIT INCLUDES (6) CAT. LIST. V3-1 BASIC SWITCHES
- 3 - SWITCHES DO NOT NECESSARILY OPERATE SIMULTANEOUSLY

THIS DRAWING COVERS A PROPRIETARY ITEM AND IS THE PROPERTY OF MICRO SWITCH, A DIVISION OF HONEYWELL. THIS DRAWING IS NOT TO BE COPIED OR USED WITHOUT THE APPROVAL OF MICRO SWITCH.

CHARACTERISTICS

ELECTRICAL DATA

CONTACT ARRANGEMENT
(6) S. P. D.T.

BREAK DISTANCE
.040 APPROX.

① 15 A - 1/3 HP - 125 OR 250 VAC
1/2 A - 125 VDC; 1/4 A - 250 VDC

SCALE FULL

DO NOT SCALE PRINT

UNLESS OTHERWISE SPECIFIED:

DIMENSIONS ARE IN INCHES

TOLERANCES ARE

FRACTIONS ± 1/32

DECIMALS ± .010

ANGLES ± 1°

WEIGHT

7AT4

M

DRAWING
NUMBER

ISSUE

REVISIONS

| | | | |
|---|----------|----------|------------|
| A | CO 8520 | R. L. Z. | 11 FEB. 55 |
| B | CO 9606 | W. H. B. | 21 MAY 55 |
| C | CO 16594 | D. W. V. | 2 JAN 62 |
| D | CO 17248 | M. B. F. | 23 AUG 62 |
| E | CO 58771 | R. A. G. | 12 FEB 86 |
| F | CO 60089 | M. A. M. | 12 AUG 86 |
| G | CO 68970 | G. R. T. | 11 FEB 91 |

(M) 7AT4
REPLACES ISSUE 2

RELEASE NO. 32 FEB. 55

CHECK GRH 21 FEB. 55

CHECK FVH 22 FEB. 55

CHECK R. L. Z. 11 FEB. 55

DRAWN