



**Part Number :** [1731091969](#)

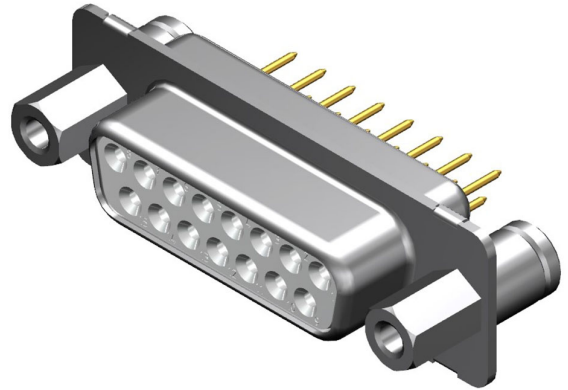
**Product Description :** FCT Standard-Density D-Sub Connector, Female, Straight, PCB Through Hole, 10.30mm Tail Length, Gold Plating, 500 Mating Cycles, 6.30mm #4-40 Front Spacer, 6.50mm M3 Rear Spacer, 15 Circuits, White Insulator

**Series Number :** 173109

**Status :** Active

**Product Category :** D-Sub Connectors

**Engineering Number :** F15S1G1-1485



---

## Documents & Resources

### Drawings

[Drawing 1731091969\\_sd.pdf](#)

### 3D Models and Design Files

[3D Model 1731091969\\_stp.zip](#)

---

## Product Environment Compliance

### Compliance

GADSL/IMDS	Not Relevant
China RoHS	
EU ELV	Not Relevant
Low-Halogen Status	Not Reviewed per IEC 61249-2-21
REACH SVHC	Contains Lead per D(2022)4187-DC (10 June 2022)
EU RoHS	Compliant with Exemption 6(c) per EU 2015/863

### Multiple Part Product Compliance Statements

- Eu RoHS
- REACH SVHC
- Low-Halogen

### Multiple Part Industry Compliance Documents

- IPC 1752A Class C

- IPC 1752A Class D
- Molex Product Compliance Declaration
- IEC-62474
- chemSHERPA (xml)

EU RoHS Certificate of Compliance

---

## Part Details

### General

Status	Active
Category	D-Sub Connectors
Series	173109
Description	FCT Standard-Density D-Sub Connector, Female, Straight, PCB Through Hole, 10.30mm Tail Length, Gold Plating, 500 Mating Cycles, 6.30mm #4-40 Front Spacer, 6.50mm M3 Rear Spacer, 15 Circuits, White Insulator
IP Rating	IP20
Magnetic	Yes
Product Family	FCT D-Sub Connectors
Product Name	FCT Products
Type	Standard Density
UPC	191130541973

### Electrical

Current - Maximum per Contact	7.5A
Shielded	Yes

### Physical

Circuits (Loaded)	15
Circuits (maximum)	15
Color - Resin	White
Durability (mating cycles max)	500
Gender	Female
Material - Contact	Copper Alloy
Material - Resin	PBT
Material - Shell	Steel

Net Weight	11.200/g
Number of Rows	2
Orientation	Straight
Packaging Type	Carton
Panel Mount	Rear
Panel Mount Method	Thread-In
PC Tail Length	10.30mm
Pitch - Mating Interface	2.84mm
Pitch - Termination Interface	2.84mm
Plating - Contact	Gold over Nickel
Plating - Shell	Tin
Polarized to Mating Part	Yes
Polarized to PCB	Yes
Ports	1
Temperature Range - Operating	-55° to +125°C
Termination Style	Through Hole
Waterproof / Dustproof	No
Waterproof / Dustproof Type	IP20

---

## Mates With / Use With

### Mates with Part(s)

Description	Part Number
Mates With	FCT Standard-Density D-Sub, Size 2, 15 Position, Plug

---

This document was generated on Sep 28, 2024