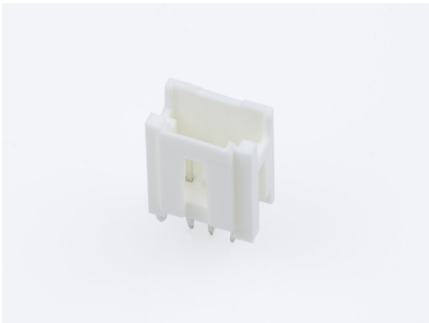




**Part Number :** [559320310](#)  
**Product Description :** 2.00mm Pitch  
MicroClasp Wire-to-Board Header, Single  
Row, Vertical, 3 Circuits, with PCB Locator  
**Series Number :** 55932  
**Status :** Active  
**Product Category :** PCB Headers and  
Receptacles



## Documents & Resources

**Drawings**  
[559320310\\_sd.pdf](#)

**3D Models and Design Files**  
[559320310\\_stp.zip](#)

**Specifications**  
[561340000-AS-000.pdf](#)  
[SPK-55932-001-001.pdf](#)  
[513820000-PS-001.pdf](#)  
[PS-51382-004-001.pdf](#)

## Product Environment Compliance

### Compliance

GADSL/IMDS	Not Relevant
China RoHS	
EU ELV	Not Relevant
Low-Halogen Status	Not Low-Halogen per IEC 61249-2-21
REACH SVHC	Not Contained per D(2024)7663-DC (21 Jan 2025)
EU RoHS	Compliant per EU 2015/863

### Multiple Part Product Compliance Statements

- Eu RoHS
- REACH SVHC
- Low-Halogen

## Multiple Part Industry Compliance Documents

- IPC 1752A Class C
- IPC 1752A Class D
- Molex Product Compliance Declaration
- IEC-62474
- chemSHERPA (xml)

## EU RoHS Certificate of Compliance

---

### Part Details

#### General

Status	Active
Category	PCB Headers and Receptacles
Series	55932
Description	2.00mm Pitch MicroClasp Wire-to-Board Header, Single Row, Vertical, 3 Circuits, with PCB Locator
Application	Signal, Wire-to-Board
Component Type	PCB Header
Product Name	MicroClasp
UPC	800756631677

#### Agency

UL	E29179
----	--------

#### Electrical

Current - Maximum per Contact	3.0A
Voltage - Maximum	250V AC (RMS)/DC

#### Physical

Breakaway	No
Circuits (Loaded)	3
Circuits (maximum)	3
Color - Resin	Natural
Durability (mating cycles max)	30
First Mate / Last Break	No
Glow-Wire Capable	No

Guide to Mating Part	No
Keying to Mating Part	None
Lock to Mating Part	Yes
Material - Plating Mating	Tin
Material - Plating Termination	Tin
Material - Resin	Polyester
Net Weight	416.100/mg
Number of Rows	1
Orientation	Vertical
Packaging Type	Tray
PC Tail Length	3.20mm
PCB Locator	Yes
PCB Retention	Yes
PCB Thickness - Recommended	1.60mm
Pitch - Mating Interface	2.00mm
Shrouded	Fully
Stackable	No
Temperature Range - Operating	-40° to +105°C
Termination Interface Style	Through Hole

---

## Mates With / Use With

### Mates with Part(s)

Description	Part Number
MicroClasp Single Row Receptacle Housings	<u>51382</u>
MicroClasp-to-MicroClasp Off-the-Shelf (OTS) Cable Assemblies	<u>15136</u>

---

This document was generated on Mar 14, 2025