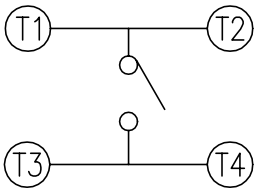
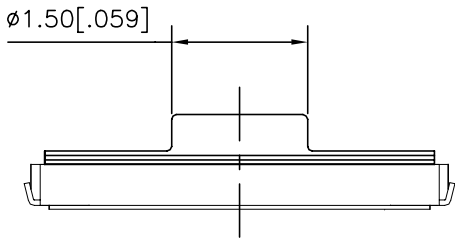
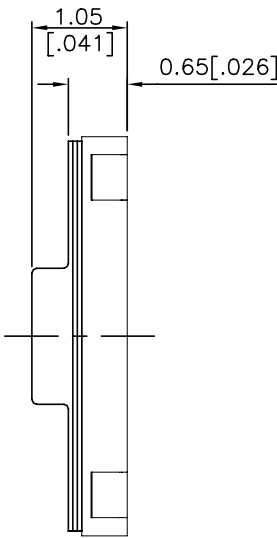
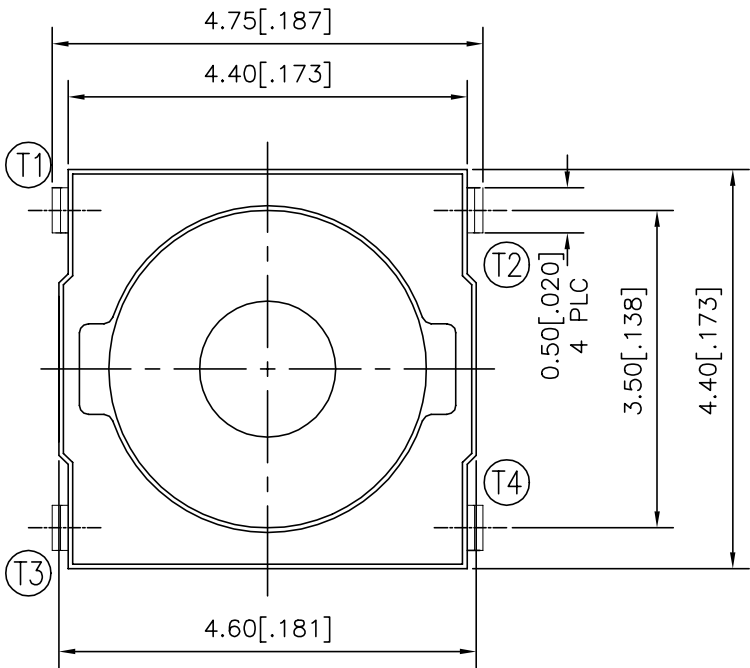
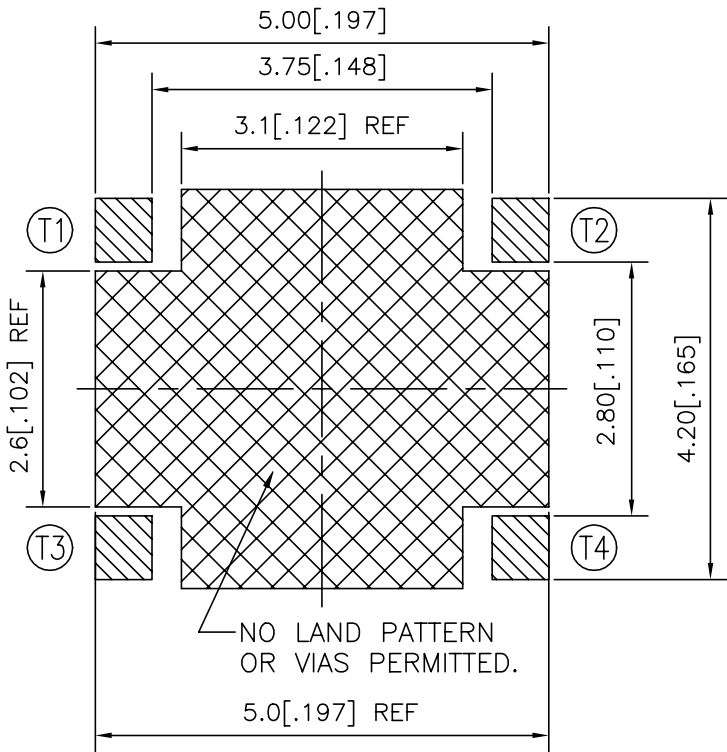


| REVISIONS |     |                           |           |     |      |
|-----------|-----|---------------------------|-----------|-----|------|
| P         | LTR | DESCRIPTION               | DATE      | DWN | APVD |
|           | B1  | REVISED PER ECR-20-011054 | 04AUG2020 | KG  | AS   |


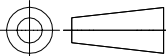


CIRCUIT DIAGRAM



P.C.B. LAYOUT

|                      |                   |             |
|----------------------|-------------------|-------------|
| 260±50               | MCSLPT4644B4PHTR  | 2337235-4   |
| 200±50               | MCSLPT4644B3PHTR  | 2337235-3   |
| 160±50               | MCSLPT4644B2PHTR  | 2337235-2   |
| 100±50               | MCSLPT4644B1PHTR  | 2337235-1   |
| ACTUATION FORCE (gf) | SMART PART NUMBER | PART NUMBER |

|   |  |                                       |  |                    |                         |
|---|--|---------------------------------------|--|--------------------|-------------------------|
| THIS DRAWING IS A CONTROLLED DOCUMENT.  |  | DWN<br>GANESH C M<br>04JUL2018        |  TE Connectivity Ltd. |                    |                         |
| DIMENSIONS:<br>mm [INCHES]  | TOLERANCES UNLESS OTHERWISE SPECIFIED:   | CHK<br>ALEXANDER SHARPE<br>04JUL2018  |  |                    |                         |
|   |  | APVD<br>ALEXANDER SHARPE<br>04JUL2018 |  |                    |                         |
|   |  | PRODUCT SPEC                          |  |                    |                         |
|  | 0 PLC ± -<br>1 PLC ± -<br>2 PLC ± 0.2 [.008]<br>3 PLC ± -<br>4 PLC ± -<br>ANGLES ± - | APPLICATION SPEC                      | NAME<br>SWITCH, TACTILE, LOW-PROFILE, MICRO-MINI,<br>4.6 x 4.4 x 1.05, J BEND                              |                    |                         |
|   |  | WEIGHT -                              |  |                    |                         |
| MATERIAL -  | FINISH -   | CUSTOMER DRAWING                      | SIZE<br>A3   | CAGE CODE<br>00779 | DRAWING NO<br>C=2337235 |
|   |  |                                       | SCALE<br>NTS   | SHEET<br>1 OF 3    | REV<br>B1               |

| REVISIONS |     |             |      |     |      |
|-----------|-----|-------------|------|-----|------|
| P         | LTR | DESCRIPTION | DATE | DWN | APVD |
|           | -   | SEE SHEET 1 | -    | -   | -    |

NOTES:

1. MATERIALS:

TERMINAL: COPPER ALLOY, SILVER FINISH  
BASE: THERMOPLASTIC, UL 94V-0, BLACK  
ACTUATOR: SILICONE RUBBER  
CONTACT: STAINLESS STEEL, SILVER FINISH

2. COMPLIANCE:

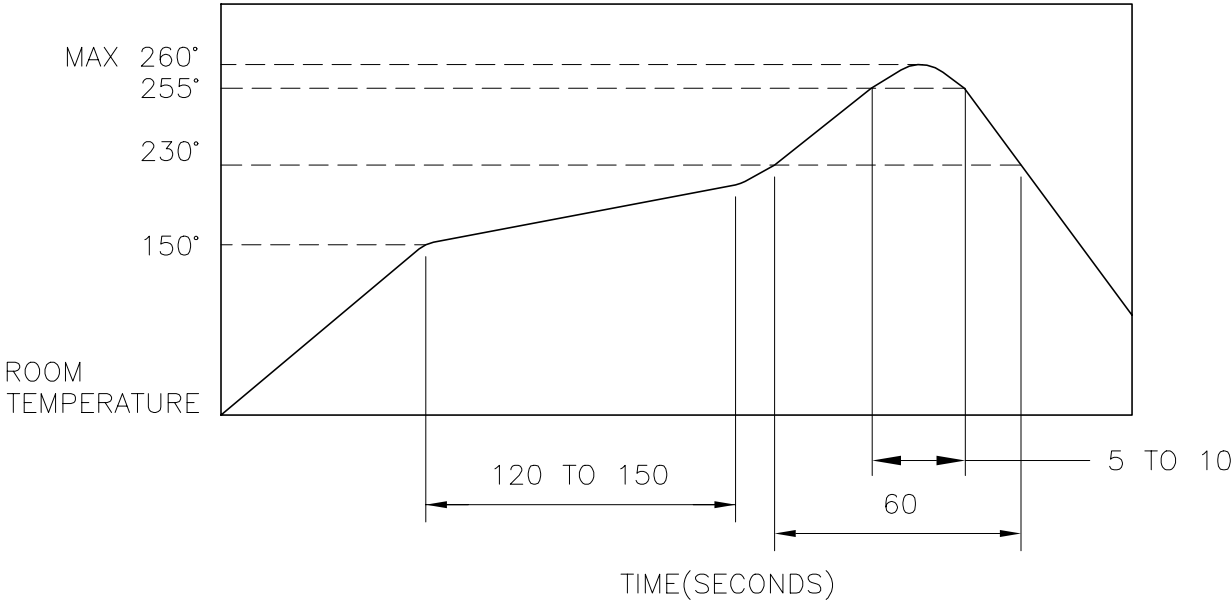
ALL MATERIALS AND FINISHES SHALL COMPLY WITH EU  
DIRECTIVE 2002/95/EC OF 27JAN2003(RoHS)

3. SPECIFICATIONS:

RATING: 50 mA, 12V DC  
CONTACT RESISTANCE: 100mΩ MAXIMUM (INITIAL)  
INSULATION RESISTANCE: 100MΩ MINIMUM (INITIAL)  
DIELECTRIC STRENGTH: 300V AC, 1 MINUTE  
OPERATING LIFE: 2337235-1 (100gf) = 1,000,000 CYCLES WITH LOAD  
                  2337235-2 (160gf) = 1,000,000 CYCLES WITH LOAD  
                  2337235-3 (200gf) = 500,000 CYCLES WITH LOAD  
                  2337235-4 (260gf) = 500,000 CYCLES WITH LOAD  
TRAVEL: 0.2±0.1 (.008±.004)  
ACTUATION FORCE: 2337235-1 = 100±50gf  
                  2337235-2 = 160±50gf  
                  2337235-3 = 200±50gf  
                  2337235-4 = 260±50gf  
OPERATING TEMPERATURE: -20° TO 70°C  
STORAGE TEMPERATURE: -30° TO 80°C

4. SOLDER CONDITIONS :

SMT:



THE CONDITON NOTED ABOVE IS THE TEMPERATURE OF THE COPPER  
FOIL ON THE SURFACE OF THE PCB. THERE ARE CASES WHERE THE  
TEMPERATURE OF THE BOARD GREATLY DIFFERS FROM THE SURFACE  
OF THE SWITCH. DO NOT ALLOW THE SURFACE TEMPERATURE  
OF THE SWITCH TO EXCEED 260°C.

MANUAL SOLDERING:

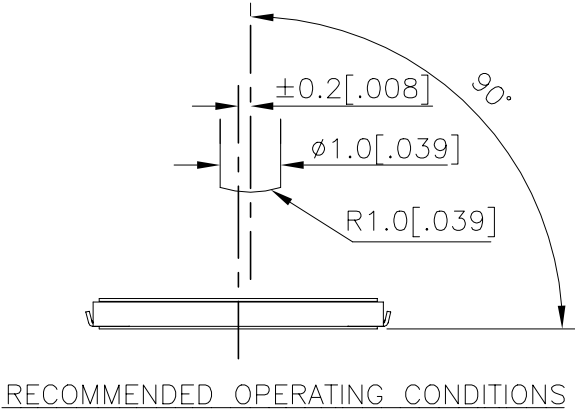
|                           |                   |
|---------------------------|-------------------|
| SOLDERING TEMPERATURE     | 350°C MAXIMUM     |
| CONTINUOUS SOLDERING TIME | 5 SECONDS MAXIMUM |


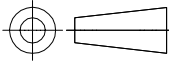
HANDLING PRECAUTIONS:

1. CARE SHOULD BE EXERCISED SO THAT FLUX FROM THE TOP SURFACE  
OF THE PRINTED CIRCUIT BOARD DOES NOT ADHERE TO THE SWITCH.
2. DO NOT WASH THE SWITCH

5. OPERATING PRECAUTIONS:

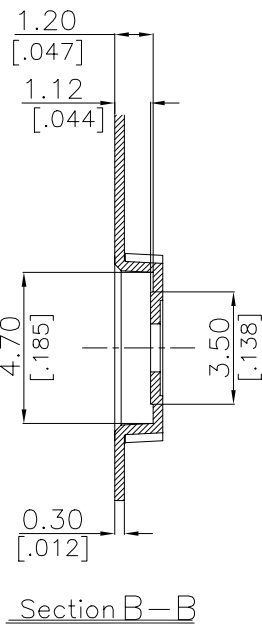
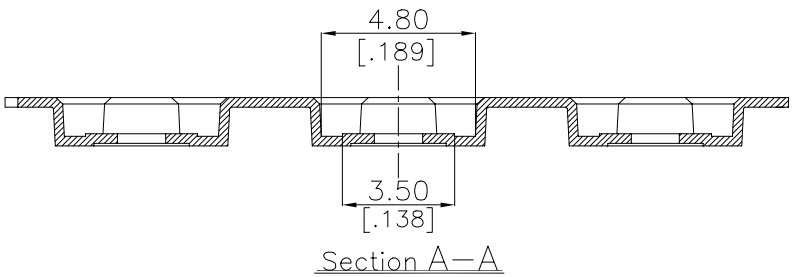
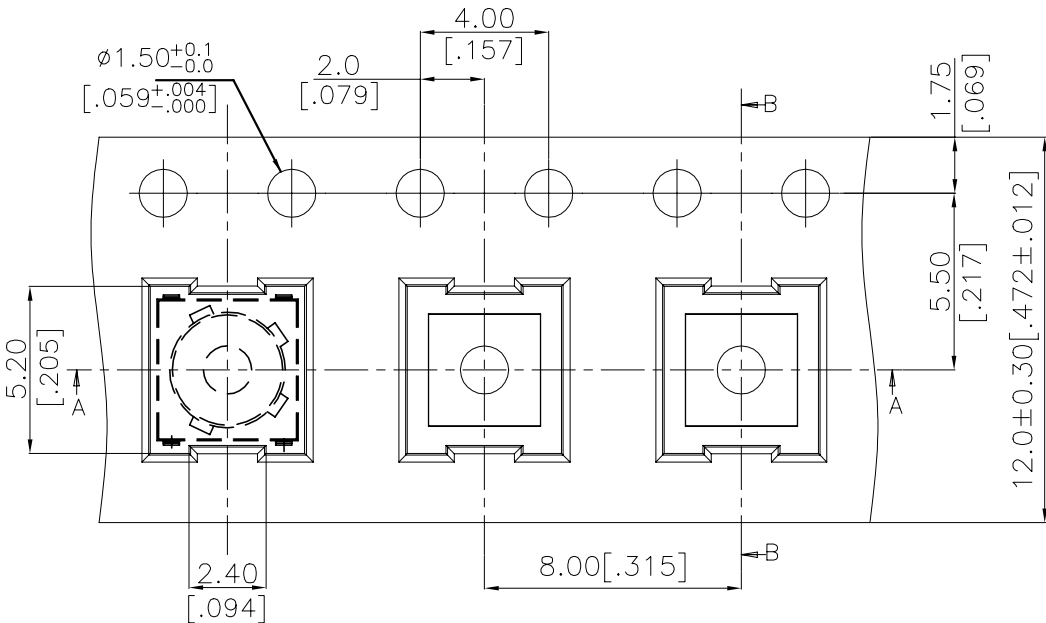
1. DO NOT ACTUATE THE SWITCH WITH EXCESSIVE FORCE
2. DISCONTINUE FORCE AFTER THE SWITCH HAS BEEN ACTUATED SO AS TO AVOID  
DEFORMATION OF THE COMPONENTS OF THE SWITCH. DEFORMATION OF THE  
COMPONENTS MAY CAUSE THE SWITCH TO MALFUNCTION.
3. ALIGN THE PLUNGER WITH THE SWITCH TO INSURE PROPER OPERATION



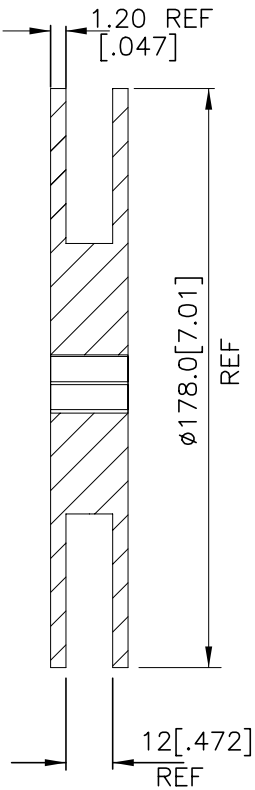
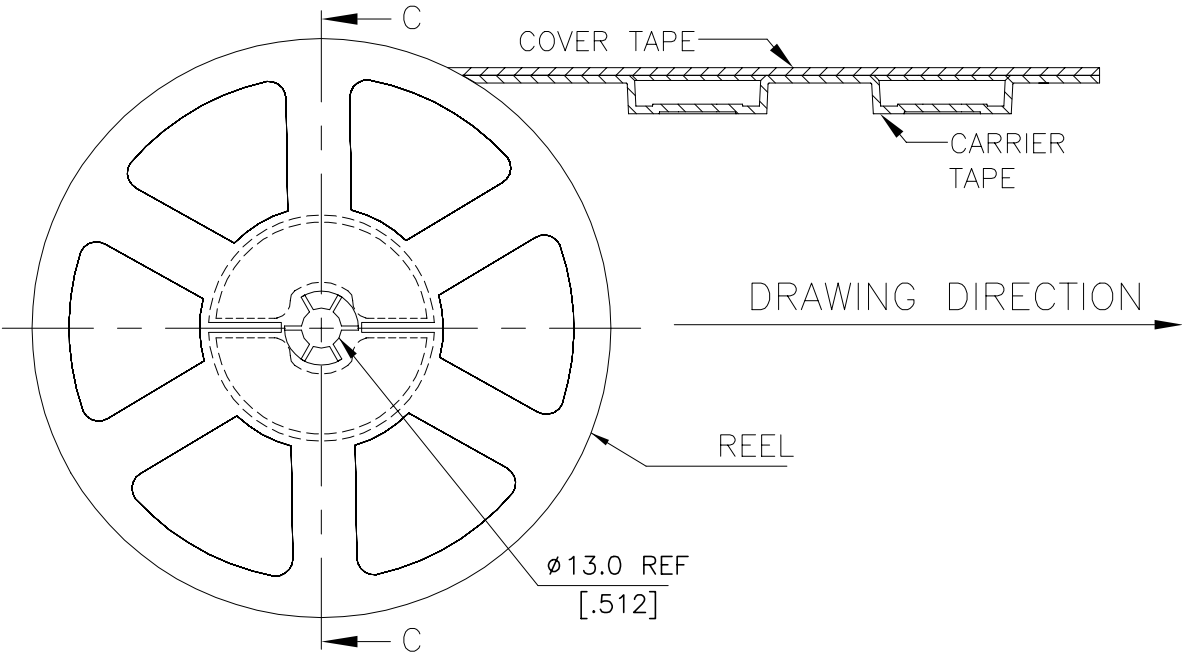
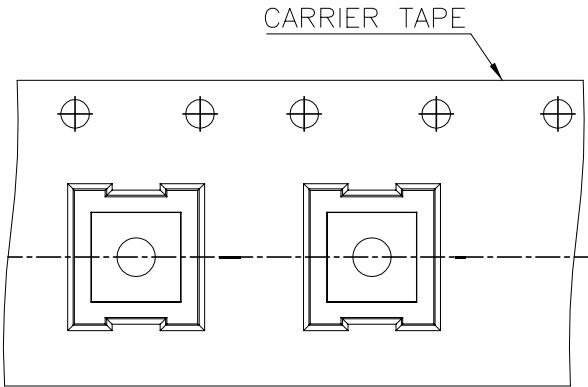
|   |  |                                       |  |  |            |                    |                 |           |
|---|--|---------------------------------------|--|--|------------|--------------------|-----------------|-----------|
| THIS DRAWING IS A CONTROLLED DOCUMENT.  |  | DWN<br>GANESH C M<br>04JUL2018        |  |  TE Connectivity Ltd. |            |                    |                 |           |
| DIMENSIONS:<br>mm [INCHES]  | TOLERANCES UNLESS<br>OTHERWISE SPECIFIED:  | CHK<br>ALEXANDER SHARPE<br>04JUL2018  |  |  |            |                    |                 |           |
|   |  | APVD<br>ALEXANDER SHARPE<br>04JUL2018 | NAME   |  |            |                    |                 |           |
|   |  | PRODUCT SPEC<br>—                     | SWITCH, TACTILE, LOW-PROFILE, MICRO-MINI,<br>4.6 x 4.4 x 1.05, J BEND<br>— |  |            |                    |                 |           |
|  | 0 PLC ± —<br>1 PLC ± —<br>2 PLC ± 0.2 [.008]<br>3 PLC ± —<br>4 PLC ± —<br>ANGLES ± — | APPLICATION SPEC<br>—                 | SIZE   | CAGE CODE  | DRAWING NO | RESTRICTED TO<br>— |                 |           |
|   |  | WEIGHT                                | A3   | 00779  | C=2337235  |                    |                 |           |
| MATERIAL<br>—   | FINISH<br>—  | CUSTOMER DRAWING                      |  |  |            | SCALE<br>NTS       | SHEET<br>2 of 3 | REV<br>B1 |

| REVISIONS |     |             |      |     |      |
|-----------|-----|-------------|------|-----|------|
| P         | LTR | DESCRIPTION | DATE | DWN | APVD |
|           | -   | SEE SHEET 1 | -    | -   | -    |

THE DIMENSIONS OF CARRIER TAPE AND REEL


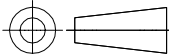


ORIENTATION OF PILOT HOLES



6. PACKAGING:

1. THE TAPE AND REEL ARE SHOWN FOR CUSTOMER APPLICATION REFERENCE. PACKAGING NOTES 3 AND 4 ARE REQUIRED BUT NOT ILLUSTRATED.
2. 1,500 SWITCHES PER REEL.
3. THE REEL, DESICCANT POUCH AND HUMIDITY CARD ARE SEALED IN A MOISTURE BARRIER BAG PER THE CURRENT REVISION OF IPC/JEDEC J-STD-033, MSL 2A REQUIREMENTS.
4. THE MOISTURE BARRIER BAG IS LABELED PER THE CURRENT REVISION OF IPC/JEDEC J-STD-033, MSL 2A REQUIREMENTS.

|   |  |                                       |  |  |                    |                         |                    |
|---|--|---------------------------------------|--|--|--------------------|-------------------------|--------------------|
| THIS DRAWING IS A CONTROLLED DOCUMENT.  |  | DWN<br>GANESH C M<br>04JUL2018        |  |  TE Connectivity Ltd. |                    |                         |                    |
| DIMENSIONS:<br>mm [INCHES]  |  | CHK<br>ALEXANDER SHARPE<br>04JUL2018  |  |  |                    |                         |                    |
|   |  | APVD<br>ALEXANDER SHARPE<br>04JUL2018 |  | NAME<br>SWITCH, TACTILE, LOW-PROFILE, MICRO-MINI,<br>4.6 x 4.4 x 1.05, J BEND                              |                    |                         |                    |
|  |  | PRODUCT SPEC<br>—                     |  |  |                    |                         |                    |
|   |  | APPLICATION SPEC<br>—                 |  |  |                    |                         |                    |
|   |  | WEIGHT                                |  |  |                    |                         |                    |
|   |  | CUSTOMER DRAWING                      |  |  |                    |                         |                    |
| MATERIAL<br>—   |  | FINISH<br>—                           |  | SIZE<br>A3   | CAGE CODE<br>00779 | DRAWING NO<br>C-2337235 | RESTRICTED TO<br>— |
|   |  |                                       |  | SCALE<br>NTS   | SHEET<br>3 of 3    | REV<br>B1               |                    |