



## CLB 300 Series

### 5mm Round Low Profile Fresnel Lens

Lens available in different colors and mounts in a 0.250" (6.35mm) dia. panel hole on 0.375" centers with a panel thickness of 0.031" to 0.250"



#### Product Specifications

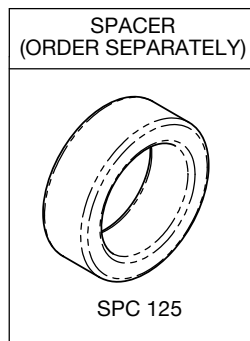
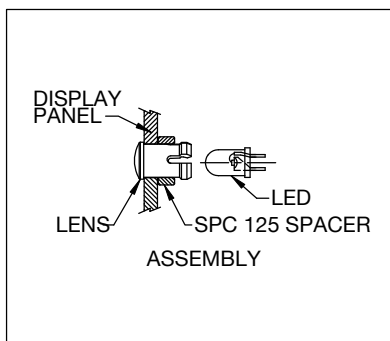
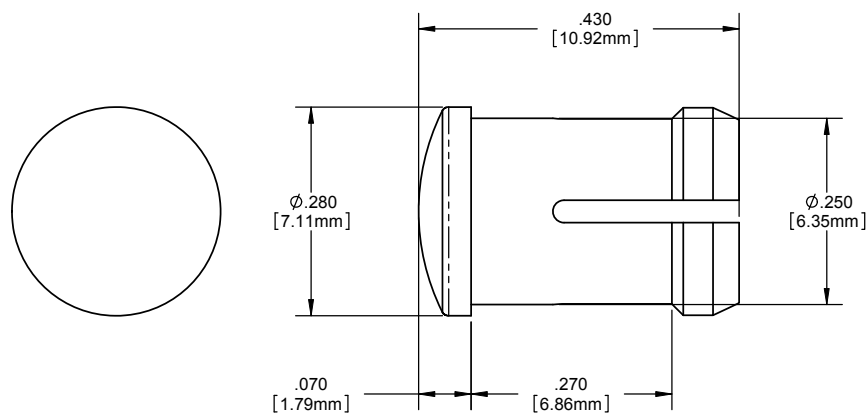
- Available in red, amber, green, blue, yellow, red, clear and white lens color
- Mounting: Mounts in a  $\varnothing.250 \pm .002$  [ $\varnothing 6.35 \text{mm} \pm .05$ ] panel hole on .375 [9.5mm] centers. Panel thickness .031 [.8 mm] to .250 [6.35mm] Panel hole should be deburred, but not chamfered.
- Assembly: Insert lens through panel hole, (for thin panels less than .188 [4.75mm] thick, slide SPC 125 spacer on back of lens), and insert LED into lens.
- Material: Polycarbonate, UL 94-V2. GLO Series- Polycarbonate & Acrylic blend
- Can be stored and operated from -55C to +100C (-67F to 212F).
- Lower temperatures flexibility (and ability to resist fracture) of the plastics is decreased.
- Higher temperatures accelerate the aging of the plastic.
- Compliant with RoHS and REACH requirements

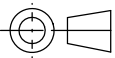
## Ordering Data

Lite pipe assembly ordering code (example): **CLB\_300\_XXX**

Lens Color	
RTP	Red Transparent
ATP	Amber Transparent
GTP	Green Transparent
BTP	Blue Transparent
YTP	Yellow Transparent
CTP	Clear Transparent
GLO	White Transparent

## Product Dimensions



Dimensions Style Inches [MM] General Tolerances Unless Otherwise Specified	
Decimals	
.X	$\pm .020$
.XX	$\pm .010$
.XXX	$\pm .005$
Angle $\pm 1^\circ$	
Break All Corners And Sharp Edges .030 Max	
	
Third Angle Projection	

## Compliances and Approvals

