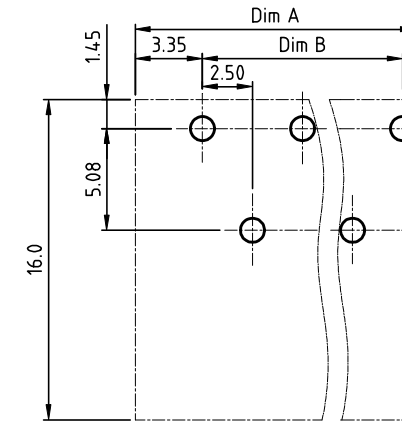
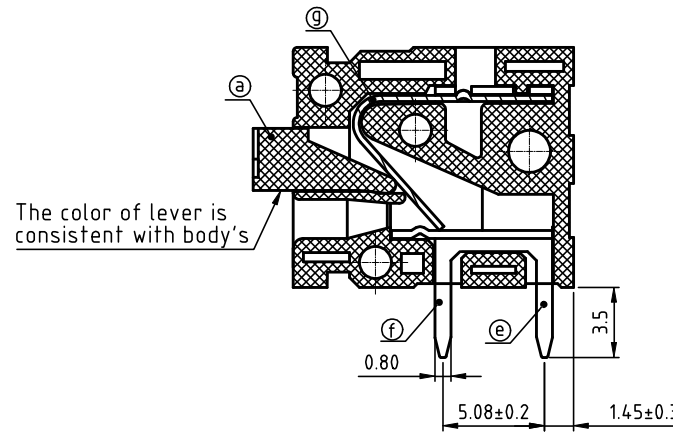
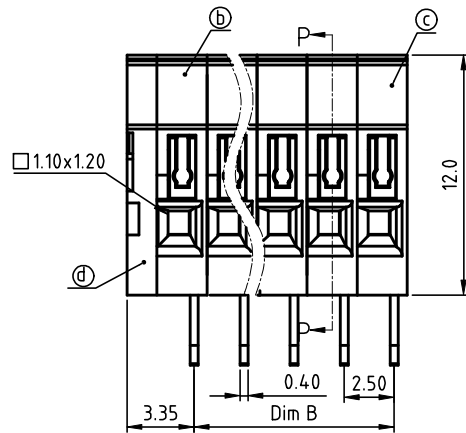


PRODUCT NUMBER	PITCH
NAxxB1x100J0G	2.50 mm



RECOMMENDED P.C.B LAYOUT
TOP VIEW

Material:

- Item(a) Terminal lever: Thermoplastic (UL94 V-0)
- Item(b) Terminal Normal housing: Thermoplastic (UL94 V-0)
- Item(c) Terminal side body Thermoplastic (UL94 V-0)
- Item(d) Terminal cover: Thermoplastic (UL94 V-0)
- Item(e) Down contacts pin omit Top side: Brass Tin plated
- Item(f) Top contacts pin omit Down side: Brass Tin plated
- Item(g) Wire guard: Stainless steel

Electrical cULus

- Voltage rating: 150V
- Current rating: 3A
- Wire range: 0.08-0.52mm²
- Solid wire(AWG): 20-28
- Stranded wire(AWG): 20-28
- Wire strip length: 9-10mm
- Withstanding Voltage: 1.3KV
- Operating temperature: -40°C to +115°C
- Soldering temperature: 260°C±5°C/5 Sec
- Safety Approval: cULus

Down contacts pin omit
Top side with cover

N=Number of poles
Dim A=Nx2.5+1.5
Dim B=(N-1)x2.5

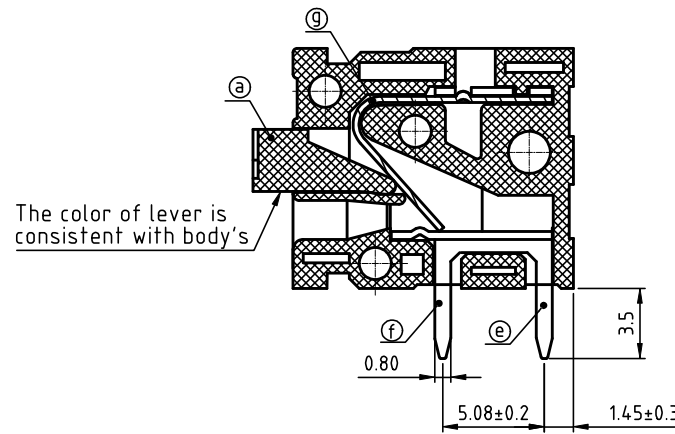
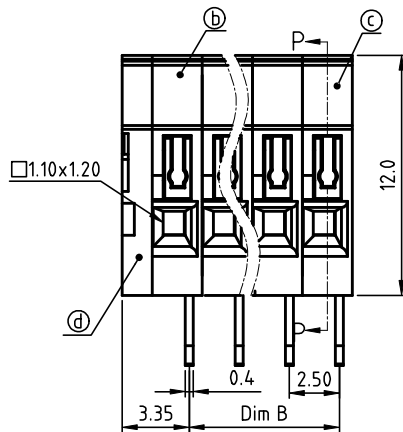
Poles	Tolerance
3p/5p	±0.20
7p/9p/11p	±0.25
13p/15p/17p 19/21p/23p	±0.30

PART NO.: NA xx B1 x 1 00J0 G

End stackable	No. of poles	Color	RoHS compliant (lead<4%) In copper Alloy
0	2	Black (RAL9005)	
03	3 poles	Red (RAL3001/D)	
05	5 poles	Orange(RAL2011/P)	
...	...	Yellow(RAL1018/A)	
23	23 poles	Green(RAL6018/T)	
		Blue (RAL5015/A)	
		Grey(RAL7004/P)	
		White(RAL1102)	
		C Multiple colors	

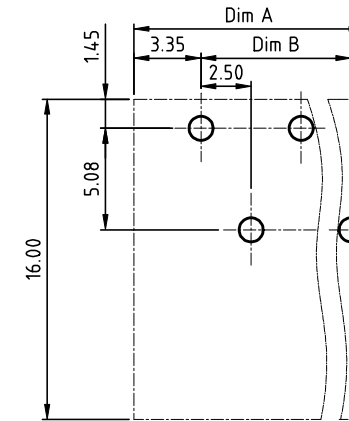
mat'l. code				surface	tolerance	projection	product family	
				ASME Y14.5	ASME Y14.5		TERMINAL BLOCK	
ltr	ecn no	dr	date	tolerances unless otherwise specified			title	
				angles	X.±0.5		TERMINAL BLOCK	
				in	X.X±0.3		SPRING CLAMP,180D WIRE INLET,B TYPE,ODD POLES	
				X'±1"	X.XX±0.1		scale	
				dr	EVIN ZHONG 052314		dwg no	
				enr	EVIN ZHONG 052314		sheet 1 of 2 size	
				chr	HANKE FENG 052314		NAxxB1x100J0G	
				appd	SHI JUN 052314		type	
							CUSTOMER Drawing	
sheet index	revision sheet	A	1					

PRODUCT NUMBER	PITCH
NAxxB1x100J0G	2.50 mm



The color of lever is consistent with body's

SECTION P-P

RECOMMENDED P.C.B LAYOUT
TOP VIEW

Material:

- Item(a) Terminal lever: Thermoplastic (UL94 V-0)
- Item(b) Terminal Normal housing: Thermoplastic (UL94 V-0)
- Item(c) Terminal side body Thermoplastic (UL94 V-0)
- Item(d) Terminal cover: Thermoplastic (UL94 V-0)
- Item(e) Down contacts pin omit Top side: Brass Tin plated
- Item(f) Top contacts pin omit Down side: Brass Tin plated
- Item(g) Wire guard: Stainless steel

Electrical

cULus

- Voltage rating: 150V
- Current rating: 3A
- Wire range: 0.08-0.52mm²
- Solid wire(AWG): 20-28
- Stranded wire(AWG): 20-28
- Wire strip length: 9-10mm
- Withstanding Voltage: 1.3KV
- Operating temperature: -40°C to +115°C
- Soldering temperature: 260°C±5°C/5 Sec
- Safety Approval: cULus

Down contacts pin omit
Top side with cover

N=Number of poles
Dim A=Nx2.5+1.5
Dim B=(N-1)x2.5

Poles	Tolerance
2p/4P/6P	±0.20
8p/10P/12P	±0.25
14P/16P/18P 20P/22P/24P	±0.30

PART NO.: NA xx B1 x 1 00J0 G

End stackable	No. of poles	Color	RoHS compliant (lead<4%) In copper Alloy
0	2	Black (RAL9005)	
02	2 poles	Red (RAL3001/D)	
04	4 poles	Orange(RAL2011/P)	
...	...	Yellow(RAL1018/A)	
...	...	Green(RAL6018/T)	
24	24 poles	Blue (RAL5015/A)	
		8 Grey(RAL7004/P)	
		9 White(RAL1102)	
		C Multiple colors	

mat'l. code				surface	tolerance	projection	product family			
				ASME Y14.5	ASME Y14.5		TERMINAL BLOCK			
ltr	ecn no	dr	date	tolerances unless otherwise specified			title			
				angles	X.±0.5		TERMINAL BLOCK			
				internal	X.X±0.3		SPRING CLAMP,180D WIRE INLET,B TYPE,EVEN POLES			
				X'±1"	X.XX±0.1		scale			
				dr	EVIN ZHONG	052314	dwg no			
				enr	EVIN ZHONG	052314	sheet 2 of 2 size			
				chr	HANKE FENG	052314	NAxxB1x100J0G			
				appd	SHI JUN	052314	A4			
sheet index		revision sheet	A				type			
		2					CUSTOMER Drawing			