



# Power Management IC Development Tools DC Motor Driver HAT(V1.0)

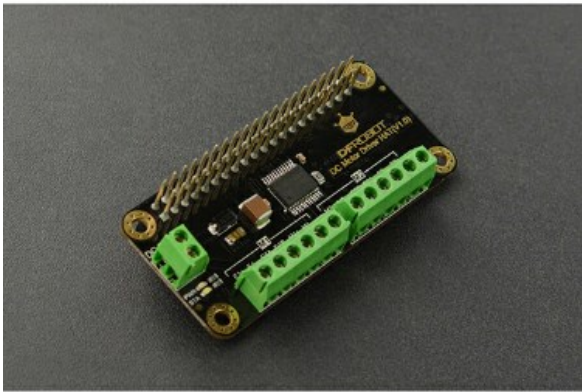
DEV-15866

DESCRIPTION

FEATURES

DOCUMENTS

- Motor Drive
- I2C Communication
- Raspberry Pi Shield
- Operating Voltage: 7~12V
- Logical Voltage: 5V
- Motor Driver Chip: TB6612FNG
- Communication Interface: I2C
- Default IIC Address: 0 x10
- Continuous Drive Current: 1.2A
- Peak Current: 2A
- Support 2-way DC Motor/DC Motor with Encoder
- Dimension: 65 x 30mm/ 2.56 x 1.18"



images are CC BY 2.0



COMMENTS 0

REVIEWS 0

## Comments

Looking for answers to **technical questions**?

We welcome your comments and suggestions below. However, if you are looking for solutions to technical questions please see our [Technical Assistance](#) page.

Log in or register to post comments.



[Apply for a Hardware Donation](#)

[FAQs](#)

[Contact Us](#)

SparkFun Electronics ® / **6333 Dry Creek Parkway, Niwot, Colorado 80503**

Questions? Feedback? powered by [Olark live chat software](#)