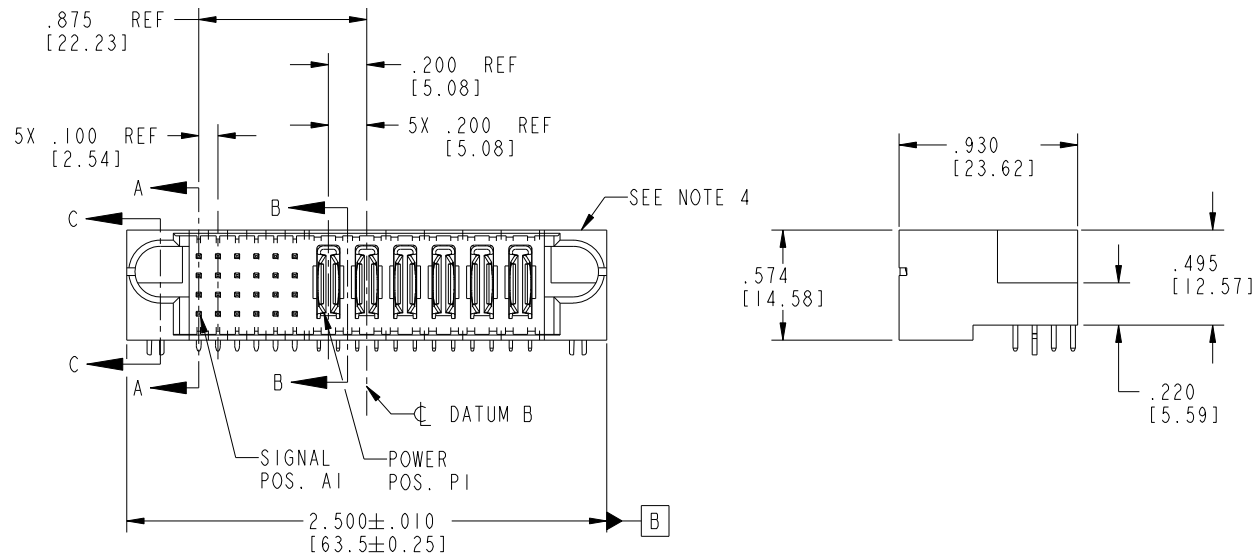
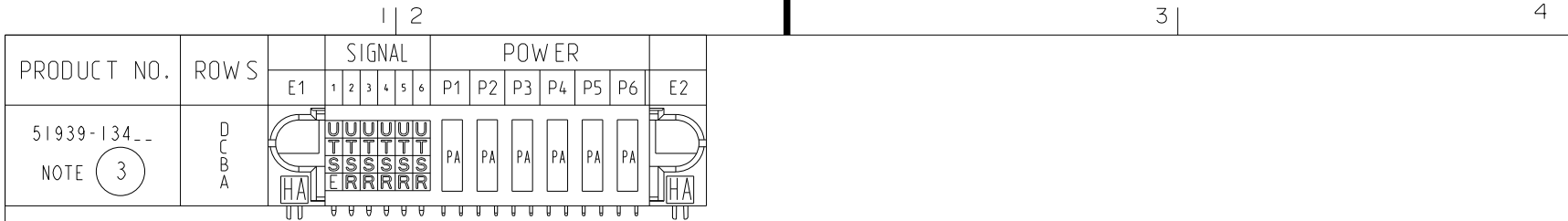


Tous droits strictement reserves. Reproduction ou communication a des tiers interdite sous quelque forme que ce soit sans autorisation écrite du propriétaire. Propriete de c FCI. Droits de reproduction FCI.



All rights strictly reserved. Reproduction or issue to third parties in any form whatever is not permitted without written authority from the proprietor. Property of FCI. Copyright FCI.



CODE	DIM "M" MATING LENGTH	CONTACT TYPE
E	.220 [5.59]	SIGNAL
R	.270 [6.86]	SIGNAL
S	.270 [6.86]	SIGNAL
T	.270 [6.86]	SIGNAL
U	.270 [6.86]	SIGNAL
PA	N/A [N/A]	POWER
HA	N/A [N/A]	HOLD-DOWN

mat'l code				SEE NOTE 2		tolerances unless otherwise specified		CUSTOMER		FCI		www.fciconnect.com	
ltr	ecn no.	dr	date	linear	angles	.XX±.01/0.X±0.3	.XXX±.005/0.XX±0.13	COPY	projection	title	24S + 6P	product family	PwrBlade
A	V04-0845	TAB	08/17/04			.XXX±.005/0.XX±0.13	.XXX±.002/0.XX±0.051			RIGHT ANGLE SOLDER HEADER		size	213
B	V04-1040	TAB	10/22/04									dwg no	51939-134
C	V04-1118	TAB	11/16/04									sheet	1 of 4
D	DG06-0013	RYAN	01/12/06	dr	T. BRUNGARD	08/17/04							
E	DG08-0266	W D	09/22/08	enrg	M. GRAY	08/17/04							
				chr	M. GRAY	08/17/04							
				appd	M. GRAY	08/17/04							
sheet index	revision sheet	E	E	E	E								
		1	2	3	4								

Pro/E

PDM: Rev: E

STATUS: Released

Printed: Dec 20, 2010

Tous droits strictement réservés. Reproduction ou communication a des tiers interdite sous quelque forme que ce soit sans autorisation écrite du propriétaire. Propriété de c FCI. Droits de reproduction FCI.



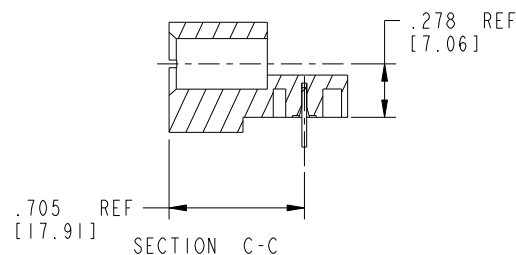
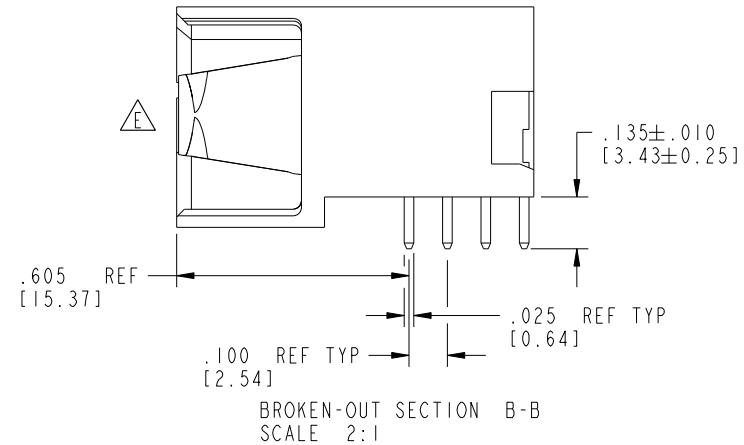
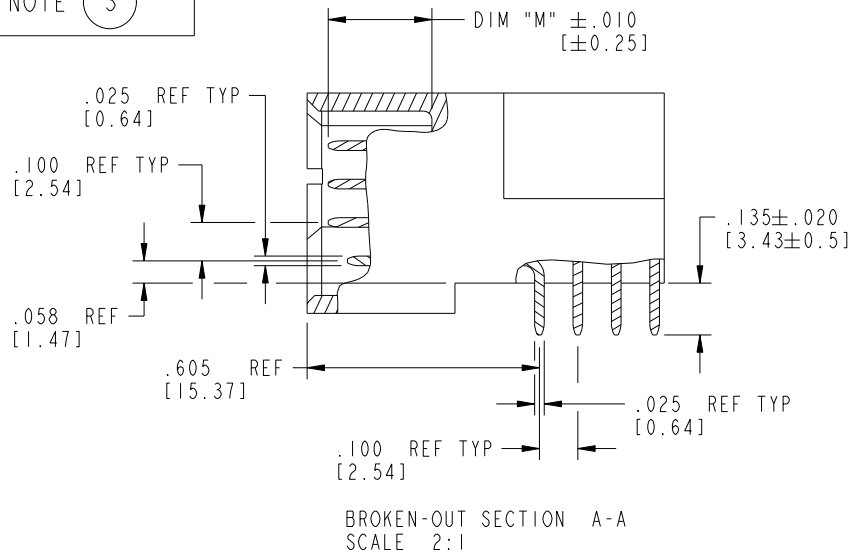
All rights strictly reserved. Reproduction or issue to third parties in any form whatever is not permitted without written authority from the proprietor. Property of FCI. Copyright FCI.

1 | 2

3 |

4

PRODUCT NUMBER  
51939-134\_\_  
NOTE (3)



mat'l code				SEE NOTE 2			tolerances unless otherwise specified			CUSTOMER		FCI	
ltr	ecr no.	dr	date	linear	angles	dr	enrg	chr	appd	COPY	projection	title	www.fciconnect.com
E				.XX $\pm .01/0.X \pm 0.3$		T. BRUNGARD	M. GRAY	M. GRAY	M. GRAY			24S + 6P	
				.XXX $\pm .005/0.XX \pm 0.13$								RIGHT ANGLE SOLDER HEADER	
				.XXXX $\pm .0020/0.XXX \pm 0.051$								product family	
				$0^\circ \pm 2^\circ$								PwrBlade	code
												size	213
												dwg no	sheet
												A	2 of 4
												51939-134	
sheet index	revision sheet												

1 | 2

Pro/E

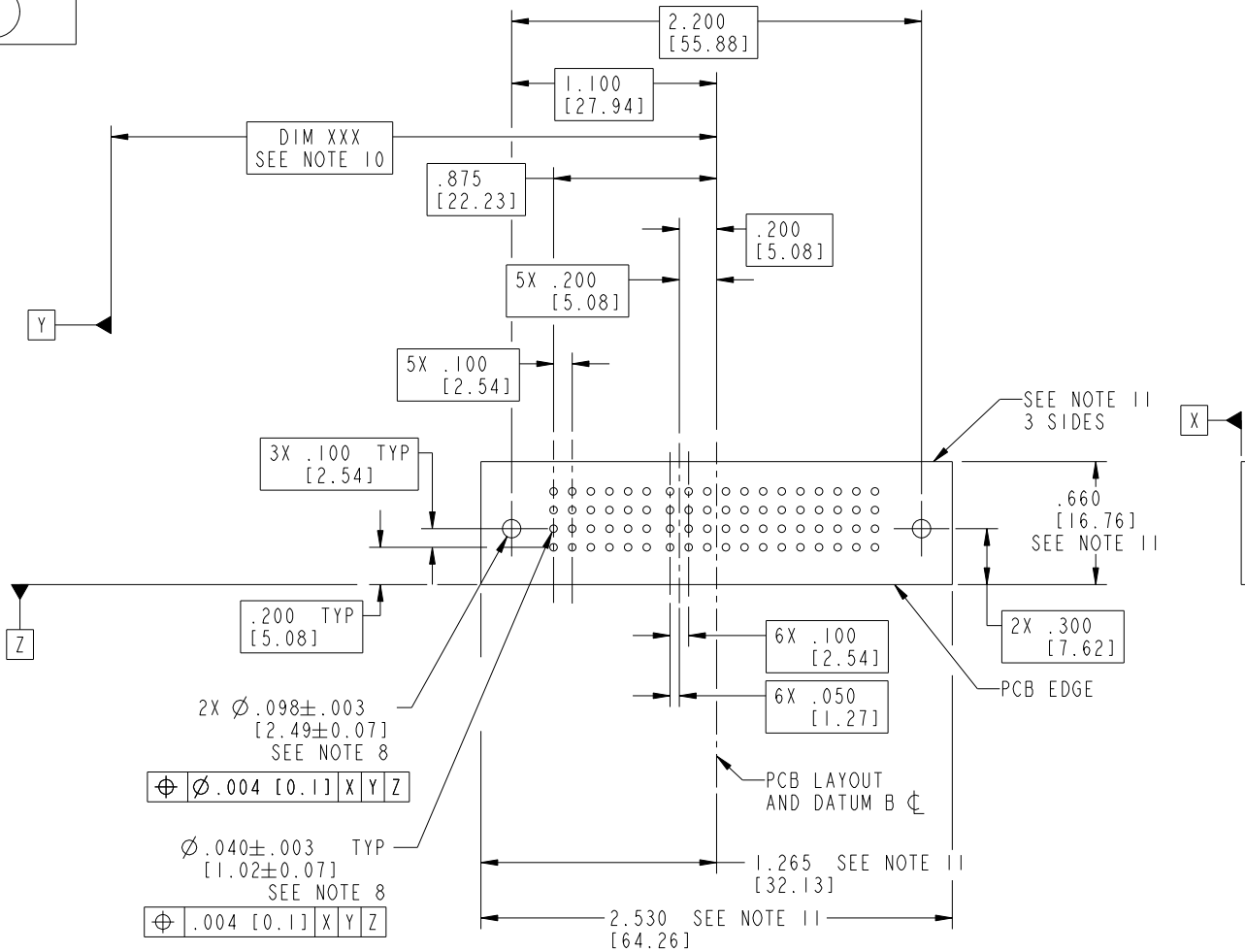
PDM: Rev: E

STATUS: Released

Printed: Dec 20, 2010



PRODUCT NUMBER  
51939-134\_\_  
NOTE (3)



RECOMMENDED PCB LAYOUT

mat'l code				SEE NOTE 2		tolerances unless otherwise specified		CUSTOMER		FCI	
ltr	ecn no.	dr	date	linear		.XX±.01/0.X±0.3		COPY		www.fciconnect.com	
E				angles		.XXX±.005/0.XX±0.13		projection		title 24S + 6P	
						.XXX±.0020/0.XXX±0.051				RIGHT ANGLE SOLDER HEADER	
						0°±2°				product family PwrBlade	
				dr	T. BRUNGARD	08/17/04				code 213	
				enr	M. GRAY	08/17/04				size dwg no	
				chr	M. GRAY	08/17/04				sheet 3 of 4	
				appd	M. GRAY	08/17/04				A 51939-134	
sheet index	revision sheet							scale 1:1			

PRODUCT NUMBER
51939-134__
NOTE (3)

NOTES:

1. DIMENSIONS AND TOLERANCES ARE IN ACCORDANCE WITH ASME Y14.5M, 1994 UNLESS OTHERWISE SPECIFIED.

CONNECTOR NOTES:

(2.) HOUSING MATERIAL: UL 94 V-0 GLASS FILLED HIGH-TEMP THERMOPLASTIC

POWER CONTACT MATERIAL: COPPER ALLOY

SIGNAL PIN MATERIAL: COPPER ALLOY

△ (3) SEE ITEM 1 & 2 IN PRINT 10064183 FOR PLATING SPEC OF 51939-134 AND 51939-134LF RESPECTIVELY.

(4.) MANUFACTURER'S NAME, P/N, AND DATE CODE TO APPEAR ON THIS SURFACE.

5. PRODUCT SPECIFICATION GS-12-149.  
APPLICATION SPECIFICATION BUS-20-067.

6. PACKAGED IN TRAYS.

PCB NOTES:

7. ALL HOLE DIAMETERS ARE FINISHED HOLE SIZE.

(8.) MOUNTING HOLES, WHERE APPLICABLE, ARE UNPLATED.

(9.)  $\varnothing .0453 \pm .0010$  [1.151  $\pm$  0.025] DRILLED HOLES PLATED WITH  
.0003 [0.008] MIN SnPb OVER .001 [0.03]  
TO .003 [0.08] Cu PLATING TO ACHIEVE  
 $\varnothing .040 \pm .003$  [1.02  $\pm$  .07] HOLE.

(10.) "DIM XXX" TO BE DETERMINED BY THE CUSTOMER.

(11.) CONNECTOR KEEP-OUT ZONE.

12. A △ SYMBOL WILL BE NEXT TO ANY DIMENSION, VIEW, OR NOTE WHICH HAS BEEN MODIFIED WITH THE CURRENT DRAWING REVISION.

mat'l code				SEE NOTE 2		tolerances unless otherwise specified		CUSTOMER		FCI		www.fciconnect.com	
ltr	ecn no.	dr	date	linear		.XX $\pm$ .01 / 0.X $\pm$ 0.3	projection	COPY		title			24S + 6P
E						.XXX $\pm$ .005 / 0.XX $\pm$ 0.13				RIGHT ANGLE SOLDER HEADER			
				angles		.XXXX $\pm$ .0020 / 0.XXX $\pm$ 0.051				product family			PwrBlade
						0° $\pm$ 2°				size			213
				dr	T. BRUNGARD	08/17/04				dwg no			sheet
				enrg	M. GRAY	08/17/04				A			4 of 4
				chr	M. GRAY	08/17/04				51939-134			
				appd	M. GRAY	08/17/04							
sheet index		revision sheet											