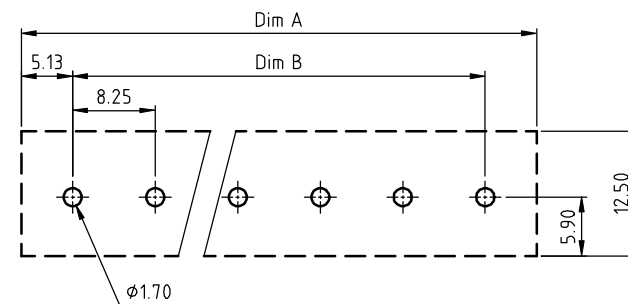
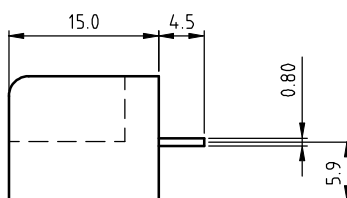
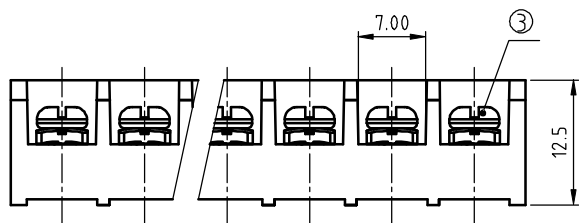
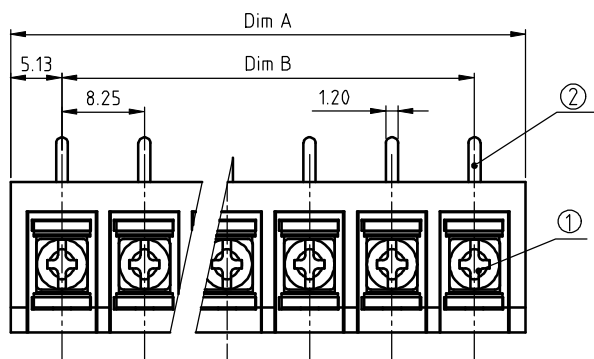


PRODUCT NUMBER	PITCH
YK332xx0x0J0G	8.25 mm



RECOMMENDED P.C.B LAYOUT
BOTTOM VIEW

MATERIALS & ELECTRICAL
RATED VOLTAGE & CURRENT:
WITHSTAND VOLTAGE:
INSULATION RESISTANCE:
OPERATING TEMPERATURE RANG:
SCREW TORQUE VALUE:

WIRE RANGE:

1) HOUSING:

2) TERMINAL .

3) TERMINAL SCREWS:

APPROVAL:

APPROVAL:

cULus / CQC

300 V, 20 A / 300 V, 32 A

AC 2500V/Min

1000 M Ω OR MORE AT DC 500 V

-40 °C +115 °C

8.8 Lb-In

22 - 12 AWG

Thermoplastic, UL 94 V-0 BLACK

BRASS 0.8t

STEEL.M3



DIMENSION

Dim A	$N \times 8.25 + 2.0$
Dim B	$(N-1) \times 8.25$

N=Number of poles

Poles	Tolerance
2p-5p	± 0.20
6p-10p	± 0.25
11p-16p	± 0.35
17p-24p	± 0.40
25p-32p	± 0.50

PART NO.:YK 332xx 0 x 0 JOG

Plated

Code	Terminal	Screw
0	G/F	G/F
1	G/F	Zinc
2	Tin	G/F
3	Tin	Zinc

RoHS compliant
(lead<4%)
In copper Alloy

[illegible]