



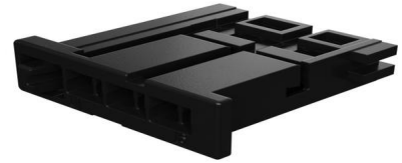
Part Number : [2058272061](#)

Product Description : ConnTAK50 Tang Receptacle, Single Row, 6 Circuits, Key A, Black

Series Number : 205827

Status : Active

Product Category : Connector Housings



Documents and Resources

Drawings

[2058272061_sd.pdf](#)

[PK-31301-538-001.pdf](#)

3D Models and Design Files

[STEP AP242](#)

[SOLIDWORKS](#)

[Creo](#)

Specifications

[2046310000-AS-000.pdf](#)

[2046310000-PS-000.pdf](#)

Product Environment Compliance

Compliance

GADSL/IMDS	Compliant
China RoHS	Not Relevant
EU ELV	Compliant per 2000/53/EC
Low-Halogen Status	Not Relevant
REACH SVHC	Not Contained per D(2025)7771-DC (04 Feb 2026)
EU RoHS	Compliant per EU 2015/863

Compliance Statements

- EU RoHS
- REACH SVHC
- Low-Halogen

Industry Documents

- IPC 1752A Class C
- IPC 1752A Class D
- Molex Product Compliance Declaration
- IEC-62474
- chemSHERPA (xml)

Substances of Interest

- PFAS

EU RoHS Certificate of Compliance

Additional Product Compliance Information

Part Details

General

Status	Active
Category	Connector Housings
Series	205827
Description	ConnTAK50 Tang Receptacle, Single Row, 6 Circuits, Key A, Black
Application	Automotive, Power, Signal, Wire-to-Board
Product Name	ConnTAK50
UPC	193264090686

Physical

Circuits (maximum)	6
Color - Resin	Black
Gender	Receptacle
Glow-Wire Capable	No
Keying to Mating Part	Yes
Lock to Mating Part	Yes
Material - Resin	Polybutylene Terephthalate (PBT)
Net Weight	0.780/g
Number of Rows	1
Packaging Type	Bag
Panel Mount	No
Pitch - Mating Interface	1.80mm

Pitch - Termination Interface	1.80mm
Polarization	A
Polarized to Mating Part	Yes
Stackable	No
Temperature Range - Operating	-40° to +100°C USCAR Class T2, -40° to +105°C LV-214

Mates With / Use With

Mates with Part(s)

Description	Part Number
ConnTAK50 Right-Angle, Single Row, Surface Mount Headers	<u>208033</u>
ConnTAK50 Vertical, Single Row, Surface Mount Headers	<u>208035</u>

Use with Part(s)

Description	Part Number
TAK50 Receptacle Terminal, Unsealed, L-Grip, D-Wind, Left Reel Payoff	<u>2000963101</u>
TAK50 Receptacle Terminal, Unsealed, L-Grip, B-Wind, Right Reel Payoff	<u>2000963161</u>
TAK50 Receptacle Terminal, Unsealed, S-Grip, D-Wind, Left Reel Payoff	<u>2000963201</u>
TAK50 Receptacle Terminal, Unsealed, S-Grip, B-Wind, Right Reel Payoff	<u>2000963261</u>

This document was generated on May 05, 2026