



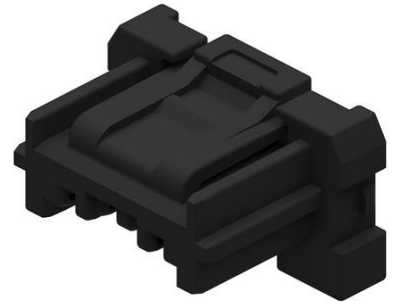
Part Number : [2016472121](#)

Product Description : Spot-On Wire-to-Board Receptacle Housing, 1.50mm Pitch, Single Row, 12 Circuits, Black

Series Number : 201647

Status : Active

Product Category : Connector Housings



Documents and Resources

Drawings

[2016472121_sd.pdf](#)

3D Models and Design Files

[STEP AP242](#)

[SOLIDWORKS](#)

[Creo](#)

Specifications

[2016440000-A00.pdf](#)


[2016440000-A01.pdf](#)

[2016479200-200.pdf](#)

[2016470000-000.pdf](#)

Product Environment Compliance

Compliance

GADSL/IMDS	Not Relevant
China RoHS	 per SJ/T 11365-2006
EU ELV	Not Relevant
Low-Halogen Status	Not Low-Halogen per IEC 61249-2-21
REACH SVHC	Not Contained per D(2025)7771-DC (04 Feb 2026)
EU RoHS	Compliant per EU 2015/863

Compliance Statements

- EU RoHS
- REACH SVHC
- Low-Halogen

Industry Documents

- IPC 1752A Class C
- IPC 1752A Class D
- Molex Product Compliance Declaration
- IEC-62474
- chemSHERPA (xml)

Substances of Interest

- PFAS

EU RoHS Certificate of Compliance

Additional Product Compliance Information

Part Details

General

Status	Active
Category	Connector Housings
Series	201647
Description	Spot-On Wire-to-Board Receptacle Housing, 1.50mm Pitch, Single Row, 12 Circuits, Black
Application	Signal, Wire-to-Board
Keyword	Spot-On 1.5
Product Name	Spot-On
UPC	889056839617

Physical

Circuits (maximum)	12
Color - Resin	Black
Gender	Receptacle
Glow-Wire Capable	No
Keying to Mating Part	Yes
Lock to Mating Part	Yes
Material - Resin	PBT

Net Weight	775.000/mg
Number of Rows	1
Packaging Type	Bag
Panel Mount	No
Pitch - Mating Interface	1.50mm
Pitch - Termination Interface	1.50mm
Polarized to Mating Part	Yes
Temperature Range - Operating	-40° to +105°C

Mates With / Use With

Mates with Part(s)

Description	Part Number
1.50mm Pitch, Spot-On Vertical Single Row Headers with Potting Capability	<u>201648</u>

Use with Part(s)

Description	Part Number
Spot-On 1.5 Crimp Terminal, Female, Matte Tin (Sn) Plating, 28-24 AWG	<u>2016495000</u>
Spot-On Terminal Position Assurance (TPA) Wire-to-Board Retainer, 1.50mm Pitch, 12 Circuits, Grey	<u>2016502120</u>

This document was generated on Apr 15, 2026