



**Part Number :** [1210120076](#)

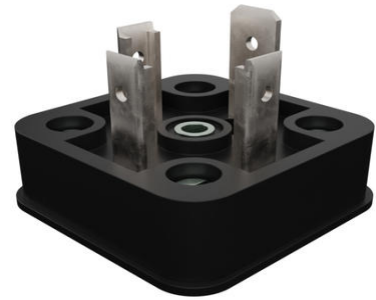
**Product Description :** mPm DIN Base, Form A-18mm, B26 Base, 3 Pole Plus Ground Terminal, 250V AC/300V DC, Black, Nitrile Gasket with Screw

**Series Number :** 121012

**Status :** Active

**Product Category :** Circular Industrial Connectors

**Engineering Part Number :** B263000N2



---

## Documents and Resources

### Drawings

[1210120076 sd.pdf](#)

### Specifications


[PK-121012-B26-001.pdf](#)

[STR-1467-001.pdf](#)

---

## Product Environment Compliance

### Compliance

GADSL/IMDS	Not Relevant
China RoHS	 per SJ/T 11365-2006
EU ELV	Not Relevant
Low-Halogen Status	Low-Halogen per IEC 61249-2-21
REACH SVHC	Contains Lead per D(2024)7663-DC (21 Jan 2025) SCIP:
EU RoHS	Compliant with Exemption 6(c) per EU 2015/863

### Compliance Statements

- EU RoHS
- REACH SVHC
- Low-Halogen

### Industry Documents

- IPC 1752A Class C

- IPC 1752A Class D
- Molex Product Compliance Declaration
- IEC-62474
- chemSHERPA (xml)

Substances of Interest

- PFAS

EU RoHS Certificate of Compliance

Additional Product Compliance Information

UKCA - Declaration of Conformity

CE - Declaration of Conformity

## Part Details

### General

Status	Active
Category	Circular Industrial Connectors
Series	121012
Description	mPm DIN Base, Form A-18mm, B26 Base, 3 Pole Plus Ground Terminal, 250V AC/300V DC, Black, Nitrile Gasket with Screw
IP Rating	IP65, IP67
Product Name	mPm
Type	Field Attachable Connector
UPC	883906318185

### Electrical

Current - Maximum per Contact	16.0A
Voltage - Maximum	250V AC / 300V DC

### Physical

Cable Diameter	N/A
Coupling Type	N/A
Diagnostics / LEDs	No
Diagnostics Port	No
Form	A - 18mm
Gender	N/A

Keyway	None
Material - Connector Body	Polypropylene
Material - Contact	Brass
Material - Coupling Nut	N/A
Material - Plating Mating	Silver
Net Weight	11.730/g
Orientation	Straight
Pitch - Mating Interface	18.00mm
Poles	3
Temperature Range - Operating	-40°C to +90°C
Wire Size (AWG)	N/A

---

This document was generated on Jan 04, 2026