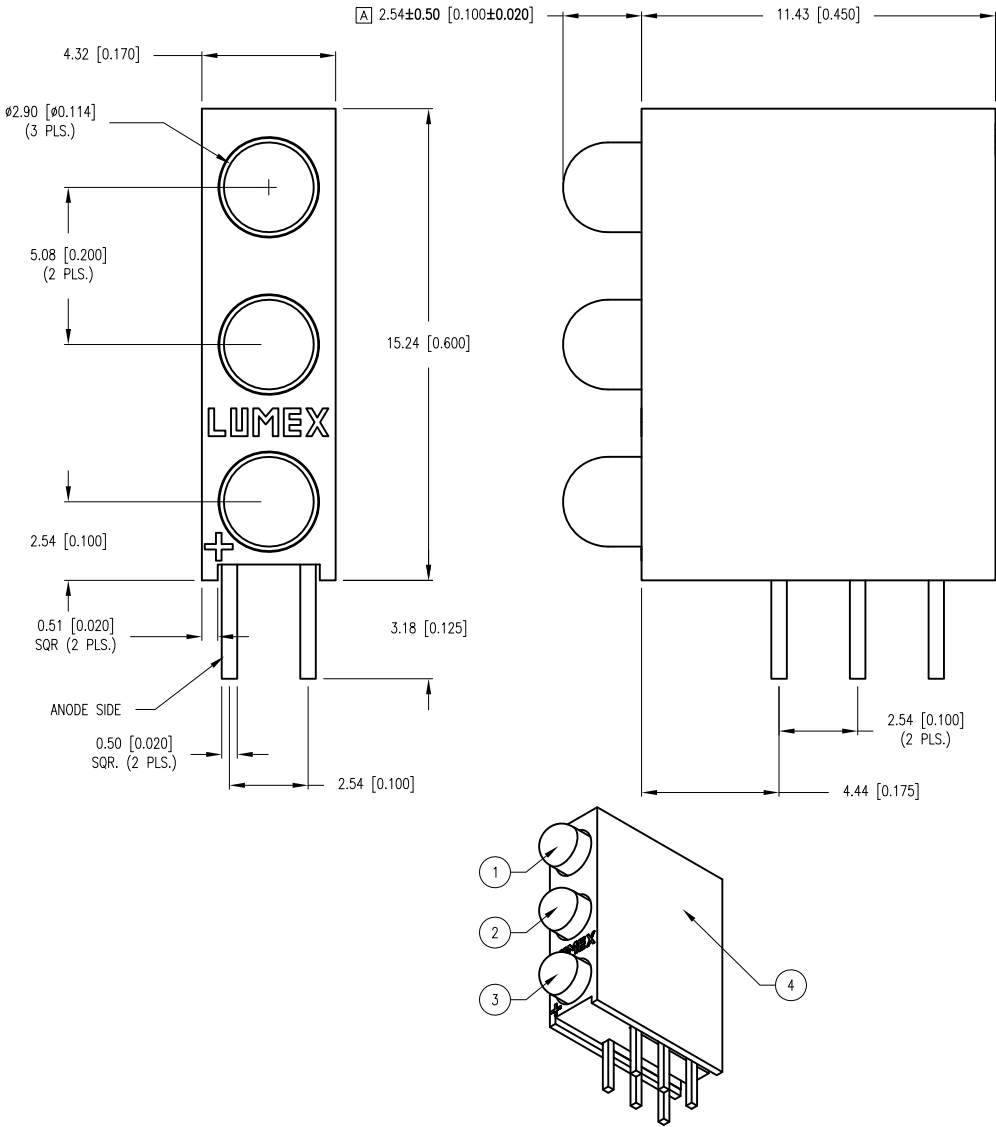


PART NUMBER	SSF-LXH340GYID	REV.	B
DATE	E.C.N. NUMBER AND REVISION COMMENTS		REV.
10.22.08	E.C.N. #11521.		A
10.29.12	E.C.N. #10BRDR. & REDRAWN.		B



ELECTRO-OPTICAL CHARACTERISTICS Ta=25°C If=20mA					
PARAMETER	GREEN	YELLOW	RED	UNITS	TEST COND
PEAK WAVELENGTH	565	585	635	nm	
FORWARD VOLTAGE (TYP)	2.2	2.1	2.0	Vf	
FORWARD VOLTAGE (MAX)	2.6	2.5	2.5	Vf	
REVERSE VOLTAGE	5.0	5.0	5.0	Vr	If=100µA
AXIAL INTENSITY	20	20	30	mcd	If=20mA
VIEWING ANGLE	60	60	60	2x theta	
LED POSITION:	1	2	3		
LENS FINISH:	DIFFUSED SAME AS EMITTED COLOR				

LIMITS OF SAFE OPERATION AT 25°C		
PARAMETER	MAX	UNITS
PEAK FORWARD CURRENT*	150	mA
STEADY CURRENT (G/Y/R)	25/30/30	mA
POWER DISSIPATION	105	mW
DERATE FROM 25°C	-1.6	mW/°C
OPERATING TEMP.	-40 TO +85	°C
STORAGE TEMP.	-40 TO +85	°C
SOLDERING TEMP.	+260	°C
2.0mm FROM BODY	3	SEC.

* t<10µs

NOTES:

1. SSL-LX3044GD, GREEN LED, GREEN DIFFUSED LENS.
2. SSL-LX3044YD, YELLOW LED, YELLOW DIFFUSED LENS.
3. SSL-LX3044ID, RED LED, RED DIFFUSED LENS.
4. SSH-LXH340 HOLDER, BLACK NYLON, 94V-0.