



Part Number : [500398000](#)

Product Description : 2.50mm Pitch Mizu-P25

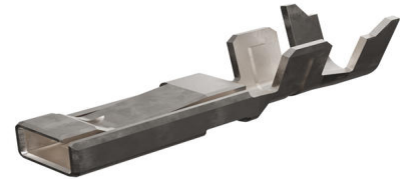
Crimp Terminal, 50039, Reel

Series Number : 50039

Status : Active

Product Category : Crimp Terminals

Packaging Alternative : [500398100](#) (Bag)



Documents and Resources

Drawings

[500398000_sd.pdf](#)

[STEP AP242](#)

[SOLIDWORKS](#)

[Creo](#)

Specifications

[AS-50038-001-001.pdf](#)

[500390000-P00.pdf](#)


[PS-52048-001-001.pdf](#)

[PS-52117-007-001.pdf](#)

[PS-52117-008-001.pdf](#)

Product Environment Compliance

Compliance

GADSL/IMDS	Compliant with Exemption 44
China RoHS	 per SJ/T 11365-2006
EU ELV	Compliant per 2000/53/EC
Low-Halogen Status	Low-Halogen per IEC 61249-2-21
REACH SVHC	Not Contained per D(2025)7771-DC (04 Feb 2026)
EU RoHS	Compliant per EU 2015/863

[Compliance Statements](#)

- EU RoHS
- REACH SVHC
- Low-Halogen

Industry Documents

- IPC 1752A Class C
- IPC 1752A Class D
- Molex Product Compliance Declaration
- IEC-62474
- chemSHERPA (xml)

Substances of Interest

- PFAS

EU RoHS Certificate of Compliance

Additional Product Compliance Information

Part Details

General

Status	Active
Category	Crimp Terminals
Series	50039
Description	2.50mm Pitch Mizu-P25 Crimp Terminal, 50039, Reel
Application	Signal, Wire-to-Wire
Product Name	Mizu-P25 Waterproof
UPC	800754368681

Electrical

Voltage - Maximum	250V
-------------------	------

Physical

Gender	Female
Material - Metal	Phosphor Bronze
Material - Plating Mating	Tin
Material - Plating Termination	Tin
Net Weight	0.093/g
Packaging Type	Reel
Plating min - Mating	0.889µm
Plating min - Termination	0.914µm

Termination Interface Style	Crimp or Compression
Wire Insulation Diameter	1.80-1.90mm
Wire Size (AWG)	20, 22
Wire Size mm ²	N/A

Solder Process Data

Lead-Free Process Capability	N/A
------------------------------	-----

Mates With / Use With

Use with Part(s)

Description	Part Number
Mizu-P25 Waterproof Receptacle Housings	<u>52117</u>

Application Tooling

Global

Description	Part Number
Extraction and Activation Tool	<u>638132700</u>
PremiumGrade Hand Crimp Tool for Mizu-P25 Splash Proof Crimp Terminals	<u>638233900</u>
FineAdjust Applicator for 2.50mm Pitch Splash Proof Crimp Terminal, 22-20 AWG	<u>639000100</u>

Japan

Description	Part Number
S-1 Applicator for Mizu-P25 Standard Waterproof Terminals	<u>570843700</u>