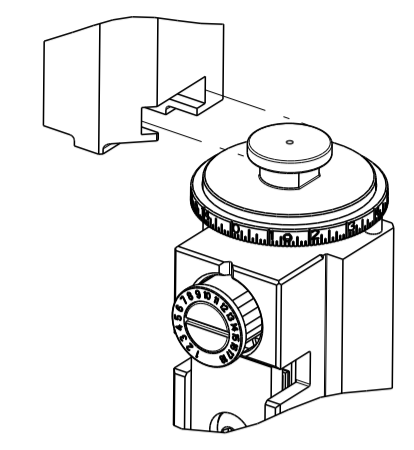


THIS DRAWING IS UNPUBLISHED.	RELEASED FOR PUBLICATION		
COPYRIGHT 20 BY TYCO ELECTRONICS CORPORATION. ALL RIGHTS RESERVED.			
PART NUMBER	REVISION	DESCRIPTION	FEED TYPE
2151142-1	H	FINE CRIMP HEIGHT ADJUST	MECHANICAL
2151142-2	H	FINE CRIMP HEIGHT ADJUST	PNEUMATIC
7-2151142-7	A	CRIMP TOOLING KIT	-

ATLANTIC VERSION TERMINATOR
INTERFACE ADAPTER



APPLICATOR DATA		
CRIMP	SIZE	TYPE
WIRE	1.07 mm [.042]	F
INSUL	1.78 mm [.070]	F
APPLICATOR INSTRUCTIONS 408-35042		

TERMINAL DATA: TE TERMINAL		TE CRIMP SPECIFICATION	
TERMINAL NAME: CRIMP SNAP-IN, MICRO MATE-N-LOCK			
WIRE STRIP LENGTH		INSULATION DIAMETER RANGE	
2.90-3.53 mm [.114-.139 IN]		Ø0.89-1.52 mm [.035-.060 IN]	
TERMINAL APPLICATION SPECIFICATION	114-13000		
TERMINALS APPLIED			
TERMINAL	TERMINAL	TERMINAL	TERMINAL
794607-1	794607-2	794607-3	1-794607-1
1-794607-2			

WIRE SIZE	CRIMP HEIGHT mm [INCH]	CRIMP HEIGHT REFERENCE SETTING
26 AWG	0.61+/-0.05 [.024+/- .002]	9.6
28 AWG	0.56+/-0.05 [.022+/- .002]	10.1
30 AWG	0.51+/-0.05 [.020+/- .002]	10.7

- 1 RECOMMENDED SPARE PARTS
- 2 REFER TO SUPPLIED INSTRUCTION SHEET FOR CLEANING, LUBRICATION AND STORAGE OF APPLICATOR.
- 3 APPLY PART NUMBER 2-23419-6 LOCTITE TO THREADS OF ITEM 242.
- 4 CRIMP HEIGHT REFERENCE SETTING WAS THE SETTING USED WHEN THE APPLICATOR WAS QUALIFIED AT THE FACTORY. ADJUSTMENT MAY BE NECESSARY WHEN RUNNING APPLICATOR IN THE FIELD.
- 5. UNLESS SPECIFIED OTHERWISE TORQUE VALUES SHALL BE USED PER DOCUMENT, 101-35000.
- 6 TERMINAL LUBRICANT IS RECOMMENDED.

***WARNING**
ON INSTALLATION, SET WIRE DISC TO CRIMP HEIGHT REFERENCE SETTING FOR LARGEST WIRE SIZE. CRIMP HEIGHT REFERENCE SETTINGS GREATER THAN THE VALUE SHOWN MAY CAUSE DAMAGE TO THE CRIMP TOOLING, REFER TO THE INSTRUCTION SHEET FOR PROPER SETUP AND ADJUSTMENTS.

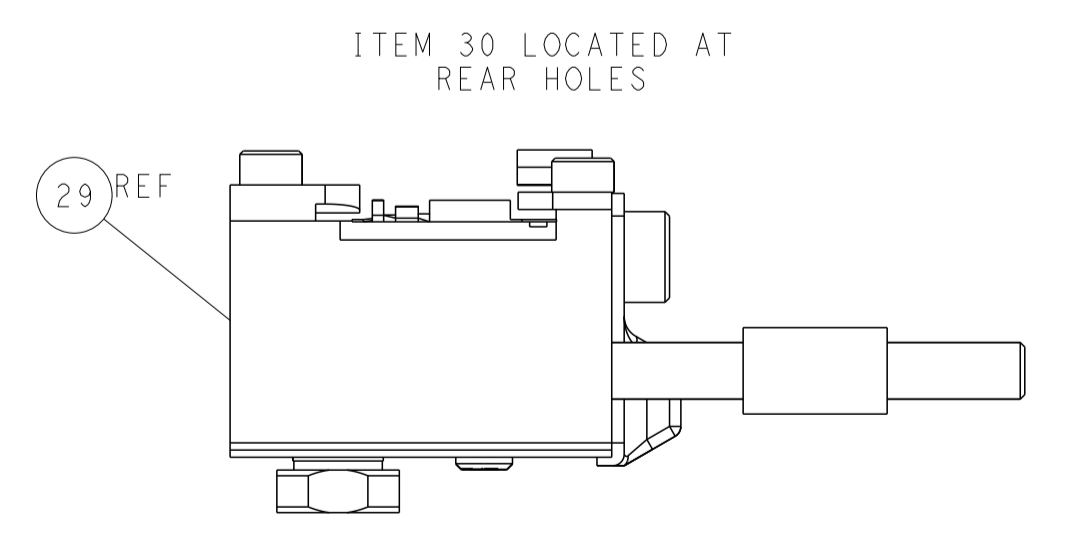
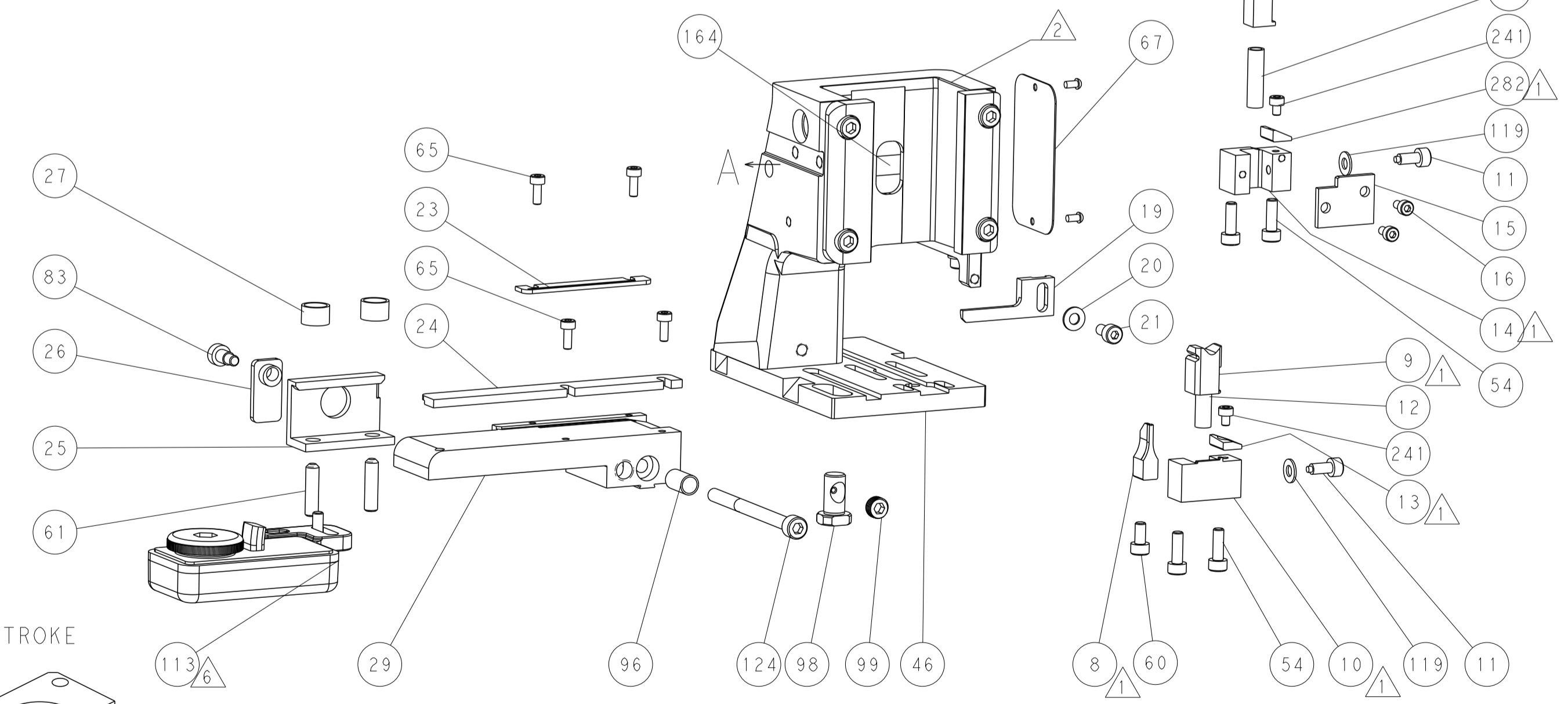
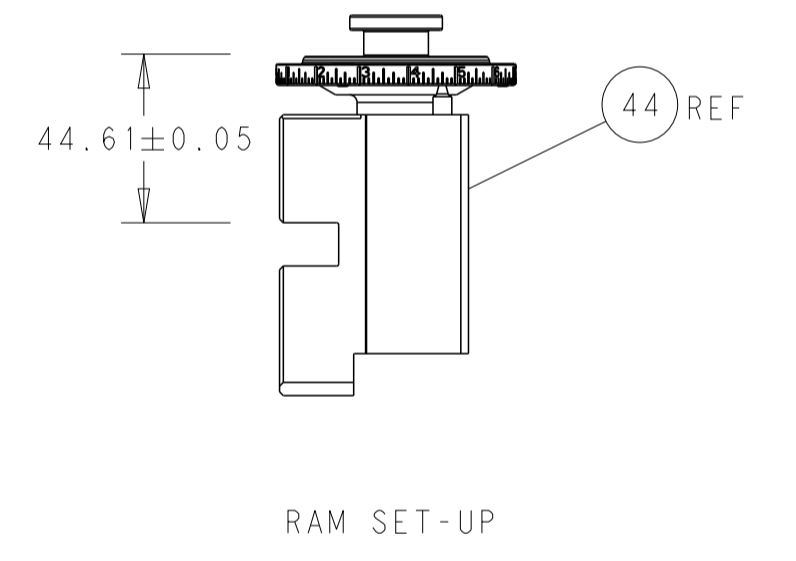
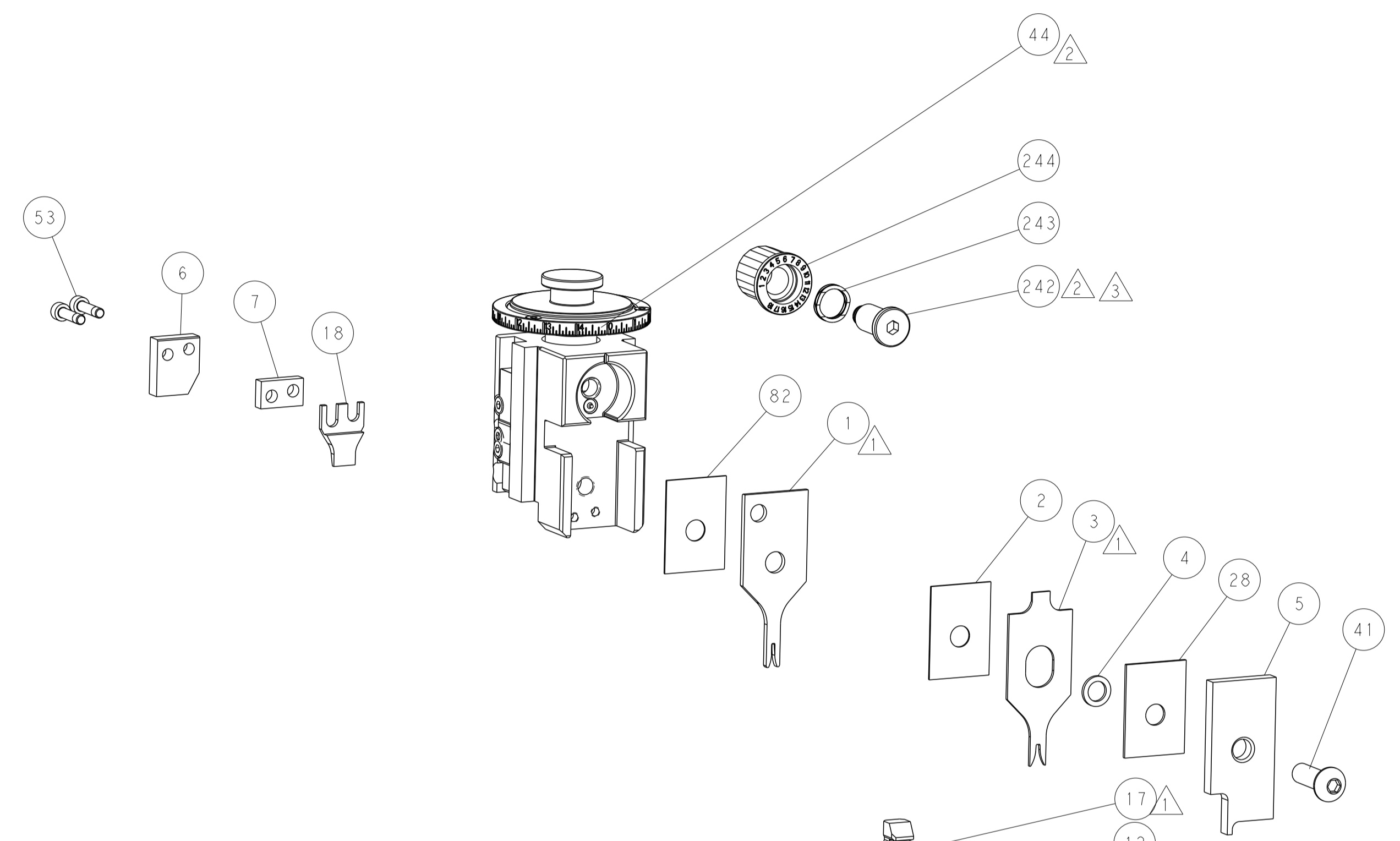
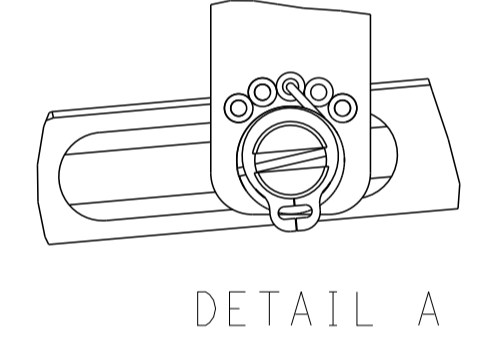
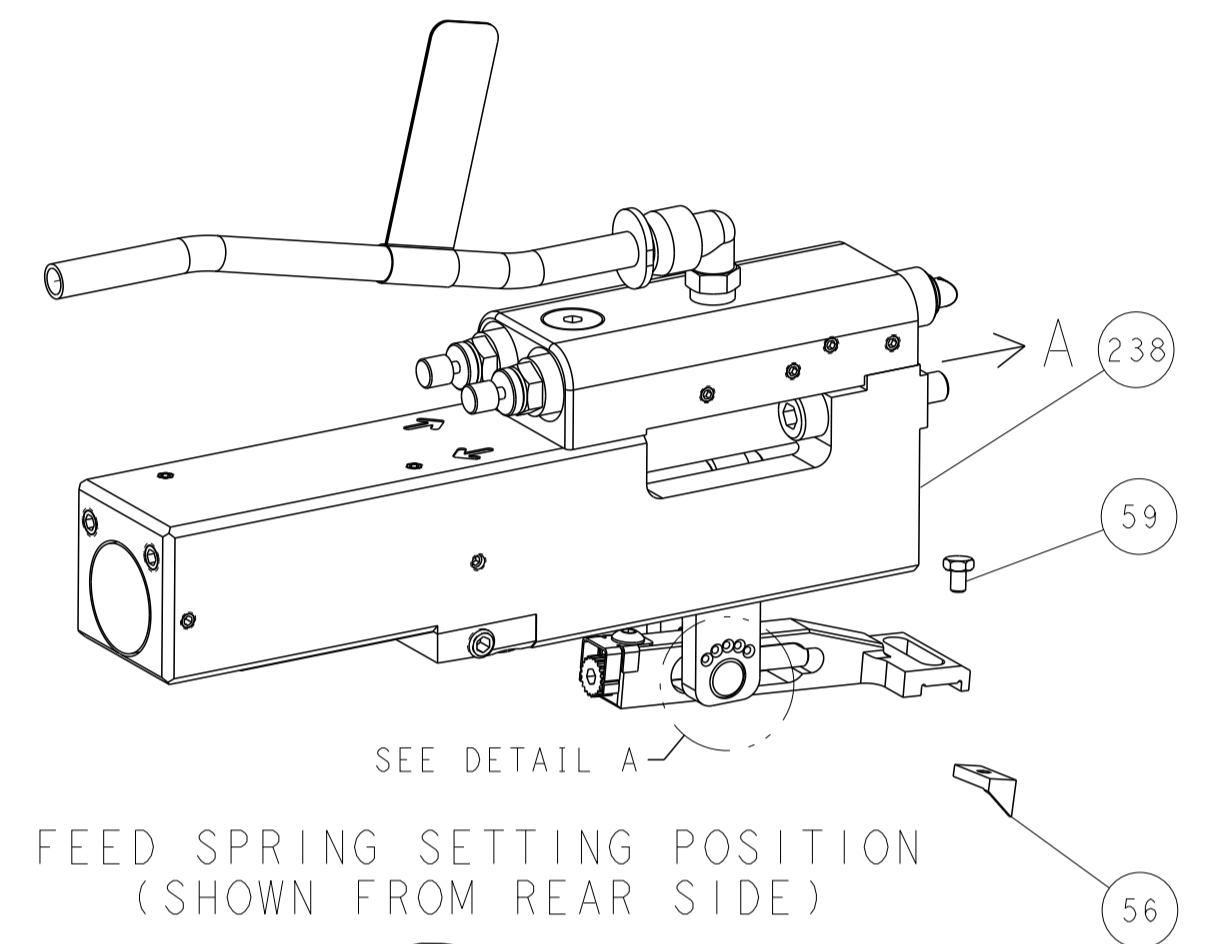
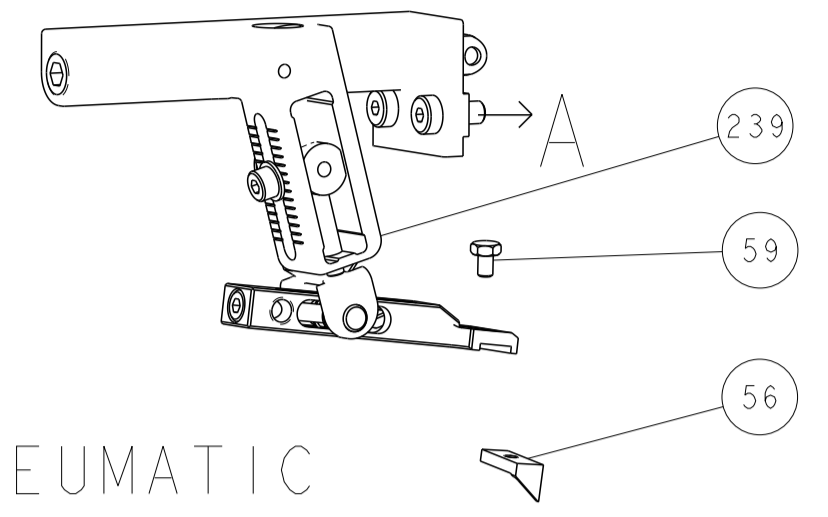
LOC	DIST	REVISIONS					
A	66	P	LTN	DESCRIPTION	DATE	OWN	APVD
		F		ECR-18-014693	17SEP2018	KH	GB
		G		ECR-19-009039	14JUN2019	TB	TE
		H		ECR-23-168255	06MAR2023	FZ	JAH
		H1		ECR-25-239329	26MAR2025	AP	TE

1	-	1	1	2280441-1	INSERT, SHEAR	282
	-	1	-	2119641-1	FEED CAM, AIR FEED	248
	-	1	1	2119082-9	CAM, SNAIL, INSULATION ADJUSTMENT	244
	-	1	1	2079764-1	WASHER, WAVE SPRING, CREST-TO-CREST	243
3	-	1	1	2119083-1	RETAINER, INSULATION DIAL	242
	-	2	2	7-18023-7	SCR, SKT HD CAP M3 X 4.0	241
	-	-	1	2119580-1	MECHANICAL FEED ASSEMBLY	239
	-	1	-	2844940-1	AIR FEED MODULE	238
	-	REF	REF	994970-2	COUNTER, MAGNETIC	164
	-	1	1	2168083-6	SCR, SKT HD CAP, RoHS, M5 X 6.5	124
	-	2	2	1-18028-2	WASHER, FLAT, REG M4	119
6	-	1	1	2119955-1	ASSY, LUBRICATOR, SIDE FEED	113
	-	1	1	2844908-1	SCREW, LOCKING	99
	-	1	1	2844907-1	POST, LOCKING	98
	-	1	1	1-22281-8	SPRING, COMPRESSION	96
	-	1	1	980371-4	SCR, SKT HD SHLDR 5.0 DIA X 6.0	83
	-	1	1	455888-5	SPACER, CRIMPER	82
	-	1	1	1803607-3	DOCUMENTATION PACKAGE	71
	-	1	1	2119740-1	TAG, IDENTIFICATION	67
	-	2	2	2168078-1	SCREW, DRIVE, RH, RoHS, 2 x .188	66
	-	4	4	2168083-1	SCR, SKT HD CAP, RoHS, M3 X 8.0	65
	-	2	2	2-18032-5	SCR, SET, FLT PNT, M5 X 20.0	61
	-	1	1	2168083-2	SCR, SKT HD CAP, RoHS, M4 X 8.0	60
	-	1	1	5-18022-5	SCR, HEX HD CAP, M4 X 6.0	59
	-	1	1	1338683-1	FEED PAWL	56
	-	4	4	2168083-3	SCR, SKT HD CAP, RoHS, M4 X 12.0	54
	-	2	2	1-18023-3	SCR, SKT HD CAP M4 X 16.0	53
	-	1	2	18023-9	SCR, SKT HD CAP M4 X 6.0	49
	-	-	1	2119652-1	FEED CAM, PRE FEED	48
	-	-	1	2119653-1	FEED CAM, POST FEED	47
	-	1	1	1803583-9	APPLICATOR BASIC ASSEMBLY, SF	46
	-	1	1	1803515-1	RAM ASSEMBLY, SF ATLANTIC	44
	-	1	1	1803602-1	SCR, BHSC, RoHS (M8 X 25)	41
	-	1	1	2305692-1	PLATE, REAR STRIP GUIDE	29
	-	1	1	1-455888-0	SPACER, CRIMPER	28
	-	2	2	22283-1	SPRING, COMPRESSION	27
	-	1	1	356835-1	LEVER, DRAG RELEASE	26
	-	1	1	240792-1	DRAG, TERMINAL	25
	-	1	1	189124-7	GUIDE, FRONT STRIP	24
	-	1	1	690438-1	FRONT STRIP GUIDE	23
	-	1	1	2168083-2	SCR, SKT HD CAP, RoHS, M4 X 8.0	21
	-	1	1	1-18028-2	WASHER, FLAT, REG M4	20
	-	1	1	2119533-1	STRIPPER, SIDE FEED	19
	-	1	1	2-690518-4	HOLD DOWN, TERMINAL	18
1	-	1	1	690463-1	FLOATING SHEAR, REAR	17
	-	2	2	1-2168083-1	SCR, SKT HD CAP, RoHS, M3 X 6	16
	-	1	1	690464-1	SHEAR PLATE, REAR	15
1	-	1	1	2119862-1	SHEAR HOLDER, REAR	14
1	-	1	1	2119806-1	INSERT, SHEAR	13
	-	2	2	3-22280-3	SPRING, COMPRESSION	12
	-	2	2	1-356885-4	STOP, SHEAR	11
1	-	1	1	2119805-1	SHEAR HOLDER, FRONT	10
1	-	1	1	1803095-1	FLOATING SHEAR, FRONT	9
1	1	1	1	5-1333200-0	ANVIL, COMBINATION	8
	-	1	1	240641-3	SPACER	7
	-	1	1	690468-2	DEPRESSOR SHEAR, REAR	6
	-	1	1	2119757-8	DEPRESSOR, SHEAR	5
	-	1	1	2-238011-0	BLOCK, CRIMPER SPACER	4
1	1	1	1	1-2119582-2	CRIMPER, INSULATION F PREMIUM	3
	-	1	1	455888-5	SPACER, CRIMPER	2
1	1	1	1	456401-4	CRIMPER, WIRE .042 F PREMIUM	1

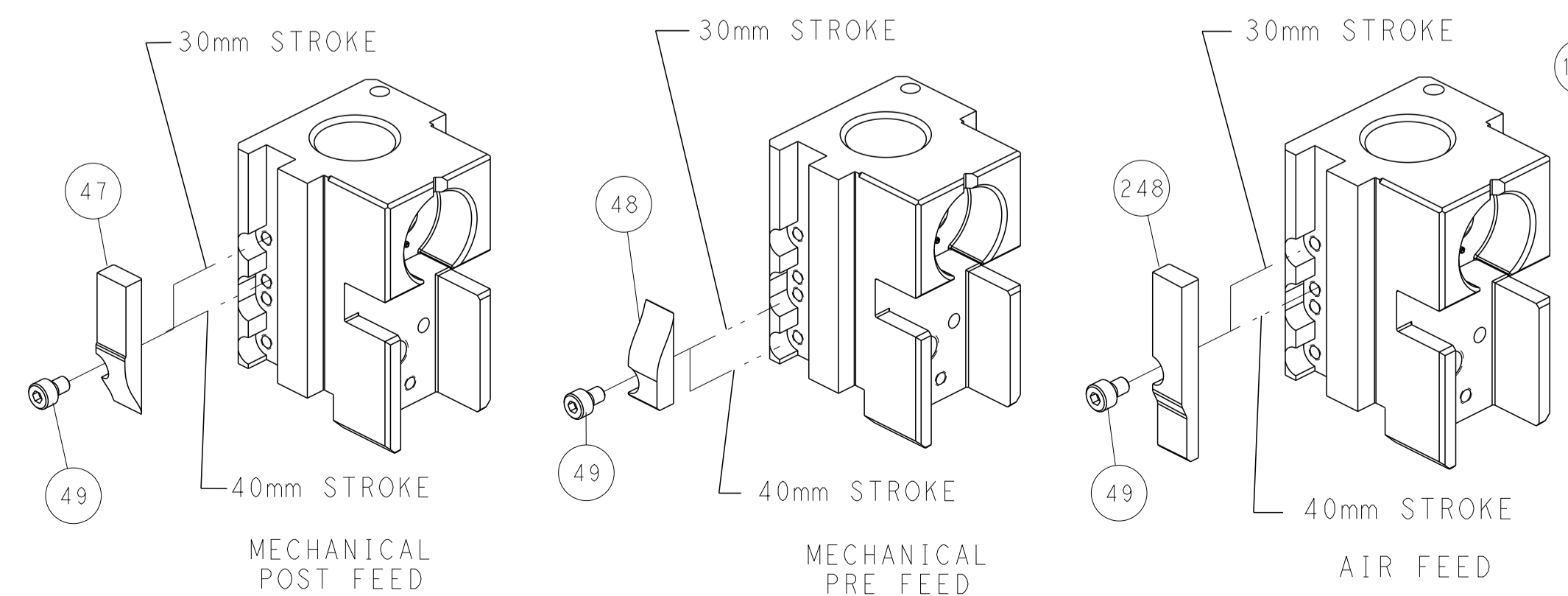
DIMENSIONS:		TOLERANCES UNLESS OTHERWISE SPECIFIED:		OWN	19OCT2011	TE Connectivity Harrisburg, PA 17105-3608
mm		0 PLC ± 1 PLC ± 2 PLC ± 3 PLC ± 4 PLC ± ANGLES ± FINISH		CHK	19OCT2011	
MATERIAL		FINISH		APVD	19OCT2011	NAME
				PRODUCT SPEC		Ocean Side Feed Applicator
				APPLICATION SPEC		
				SIZE	CAGE CODE	DRAWING NO
				WEIGHT	A1	00779
				Customer Accessible Production Drawing		SCALE
						1:2
						SHEET
						1
						OF
						4
						REV
						H1

LOC	DIST	REVISIONS					
A	66	P	LYN	DESCRIPTION	DATE	DWN	APVD
		-		SEE SHEET 1	-	-	-

FEED TYPE MECHANICAL



CAM POSITIONS



FEED TRACK POSITION GUIDE BY INSULATION BARREL

DIMENSIONS: mm 		TOLERANCES UNLESS OTHERWISE SPECIFIED: 0 PLC ± 1 PLC ± 2 PLC ± 3 PLC ± 4 PLC ± ANGLES ± FINISH		DWN Y. YIN 19OCT2011 CHK G. BAILEY 19OCT2011 APVD S. XI 19OCT2011 PRODUCT SPEC APPLICATION SPEC WEIGHT SIZE CAGE CODE DRAWING NO A1 00779 C=2151142 Customer Accessible Production Drawing		NAME Ocean Side Feed Applicator RESTRICTED TO REV H1	
MATERIAL:		FINISH:		SCALE 1:2 SHEET 2 OF 4		DATE 17105-3608 TE Connectivity Harrisburg, PA	