



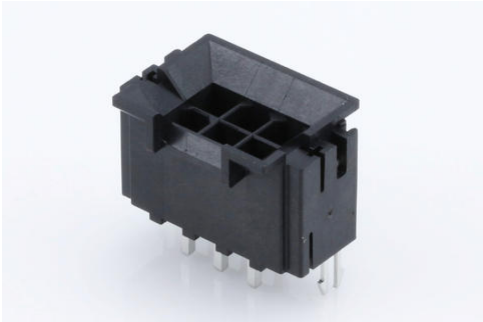
**Part Number :** [440680101](#)

**Product Description :** Mini-Fit BMI, 260C Wave Solderable, 4.20mm Pitch, Dual Row, Vertical, for 1.60mm PCB, 6 Circuits, Gold (Au) Plating, with Solderable Retention Clip

**Series Number :** 44068

**Status :** Active

**Product Category :** PCB Headers and Receptacles



## Documents & Resources

### Drawings

[440680101 sd.pdf](#)

[PK-43879-001-000.pdf](#)

### 3D Models and Design Files

[STEP AP242](#)

[SOLIDWORKS](#)

[Creo](#)

[Symbol and Footprint \(Multi-Format\)](#)

### Specifications


[PS-43810-001-001.pdf](#)

[PS-45750-001-001.pdf](#)

[TS-43879-001-001.pdf](#)

## Product Environment Compliance

### Compliance

GADSL/IMDS	Not Relevant
China RoHS	 per SJ/T 11365-2006
EU ELV	Not Relevant
Low-Halogen Status	Not Low-Halogen per IEC 61249-2-21
REACH SVHC	Not Contained per D(2025)4165-DC (25 June 2025)

EU RoHS	Compliant per EU 2015/863
---------	---------------------------

#### Compliance Statements

- EU RoHS
- REACH SVHC
- Low-Halogen

#### Industry Documents

- IPC 1752A Class C
- IPC 1752A Class D
- Molex Product Compliance Declaration
- IEC-62474
- chemSHERPA (xml)

#### Substances of Interest

- PFAS

#### EU RoHS Certificate of Compliance

#### Additional Product Compliance Information

## Part Details

### General

Status	Active
Category	PCB Headers and Receptacles
Series	44068
Description	Mini-Fit BMI, 260C Wave Solderable, 4.20mm Pitch, Dual Row, Vertical, for 1.60mm PCB, 6 Circuits, Gold (Au) Plating, with Solderable Retention Clip
Application	Board-to-Board, Power, Wire-to-Board
Comments	Current = 13A max. per circuit when header is mated to a receptacle loaded with 45750 Mini-Fit Plus HCS Crimp Terminal Crimped to 16 AWG wire. See Molex product specification PS-45750-001 for additional current de-rating information.
Component Type	PCB Header
Product Name	Mini-Fit BMI

UPC	800754787079
-----	--------------

## Agency

CSA	LR19980
UL	E29179

## Electrical

Current - Maximum per Contact	13.0A
Voltage - Maximum	600V

## Physical

Breakaway	No
Circuits (Loaded)	6
Circuits (maximum)	6
Color - Resin	Black
Durability (mating cycles max)	30
First Mate / Last Break	No
Flammability	94V-0
Glow-Wire Capable	No
Material - Metal	Brass
Material - Plating Mating	Gold
Material - Plating Termination	Gold
Material - Resin	High Temperature Thermoplastic
Net Weight	3.883/g
Number of Rows	2
Orientation	Vertical
Packaging Type	Tray
PCB Locator	Yes
PCB Retention	Yes
PCB Thickness - Recommended	3.20mm
PC Tail Length	4.88mm
Pitch - Mating Interface	4.20mm
Pitch - Termination Interface	4.20mm
Plating min - Mating	0.762µm
Plating min - Termination	0.762µm

Polarized to PCB	Yes
Shrouded	Partial
Stackable	No
Temperature Range - Operating	-40° to +105°C
Termination Interface Style	Through Hole

## Solder Process Data

Max-Duration	5
Lead-Free Process Capability	WAVE
Max-Cycle	1
Max-Temp	260

---

## Mates With / Use With

### Mates with Part(s)

Description	Part Number
Mini-Fit BMI Vertical Dual Row Receptacle Headers	<u><a href="#">42385</a></u>
Mini-Fit BMI Dual Row Receptacle Housings	<u><a href="#">42474</a></u>
Mini-Fit HCS Vertical Dual Row PCB Receptacles	<u><a href="#">44475</a></u>
Mini-Fit BMI Dual Row Receptacle Housings	<u><a href="#">44516</a></u>
Mini-Fit Jr. Receptacle Housings	<u><a href="#">5557</a></u>

---

This document was generated on Sep 10, 2025