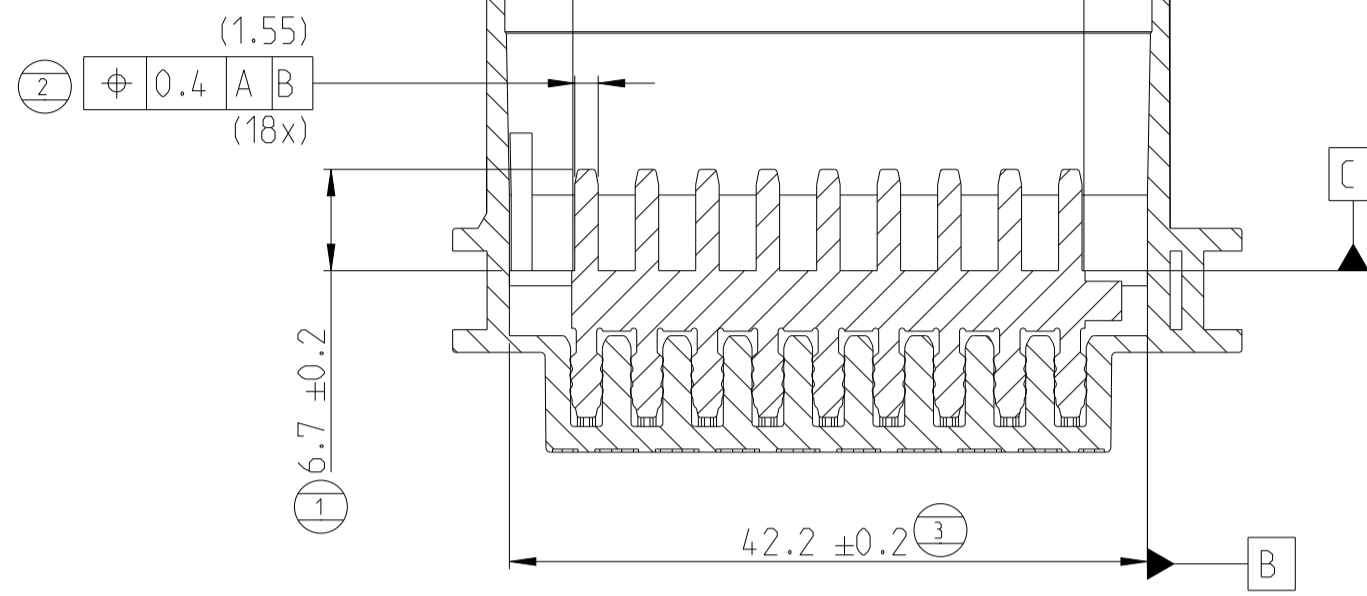


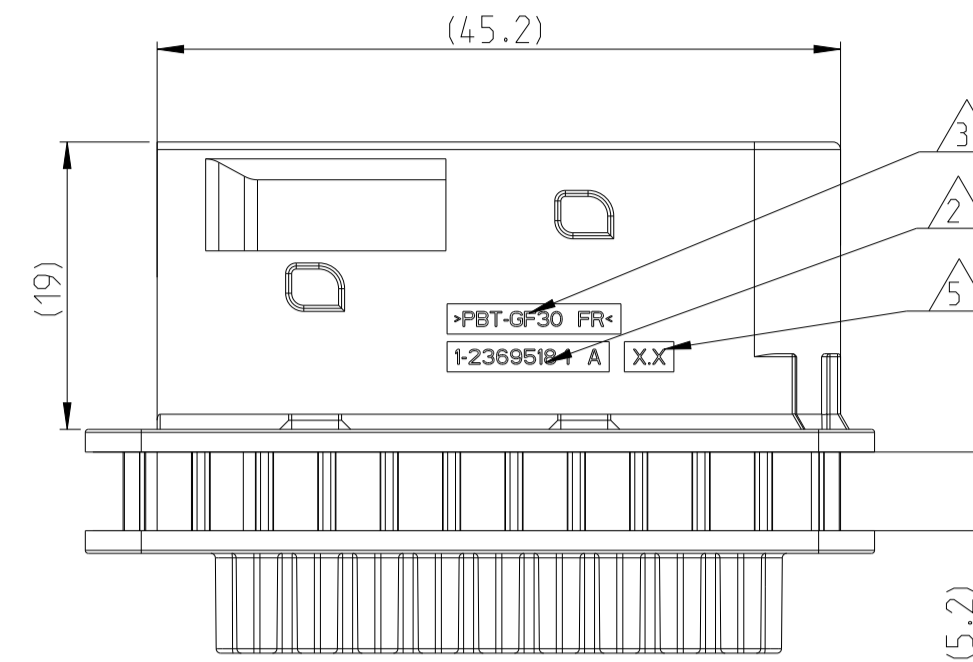
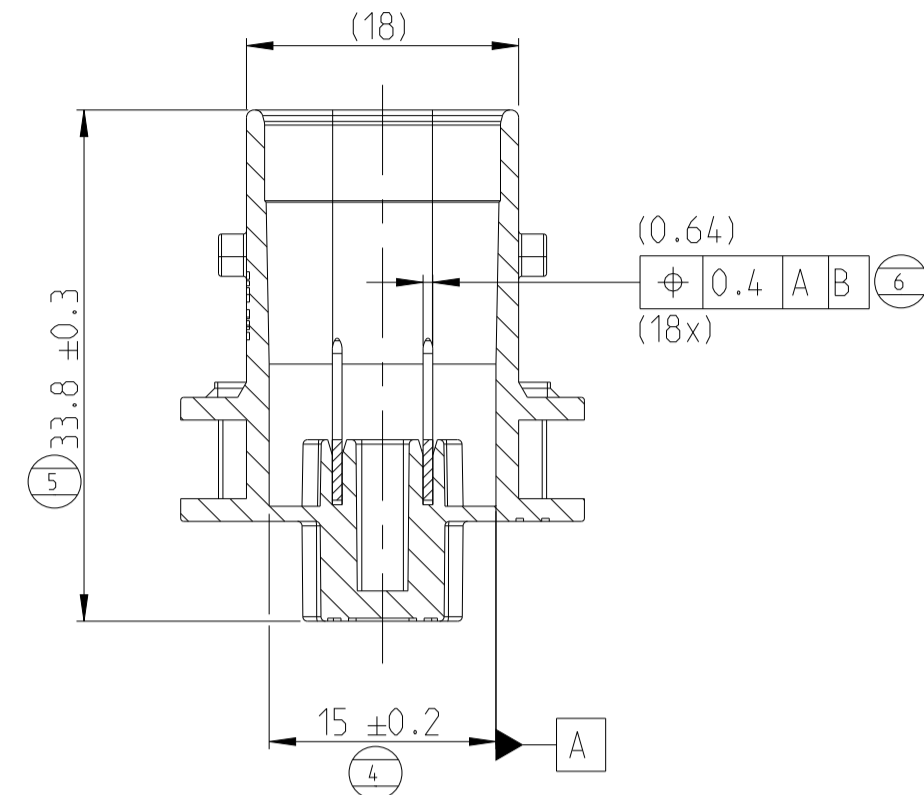
1-2369516-1 AS SHOWN  
1-2369516-1 wie gezeigt

REVISIONS				
P	LTN	DESCRIPTION	DATE	OWN APVD
A		NEW DRAWING	28JUL2020	SP GCR
A1		REVISED AS PER PCN-21-105804	24JUN2021	SP GCR

SECTION A-A  
Schnitt

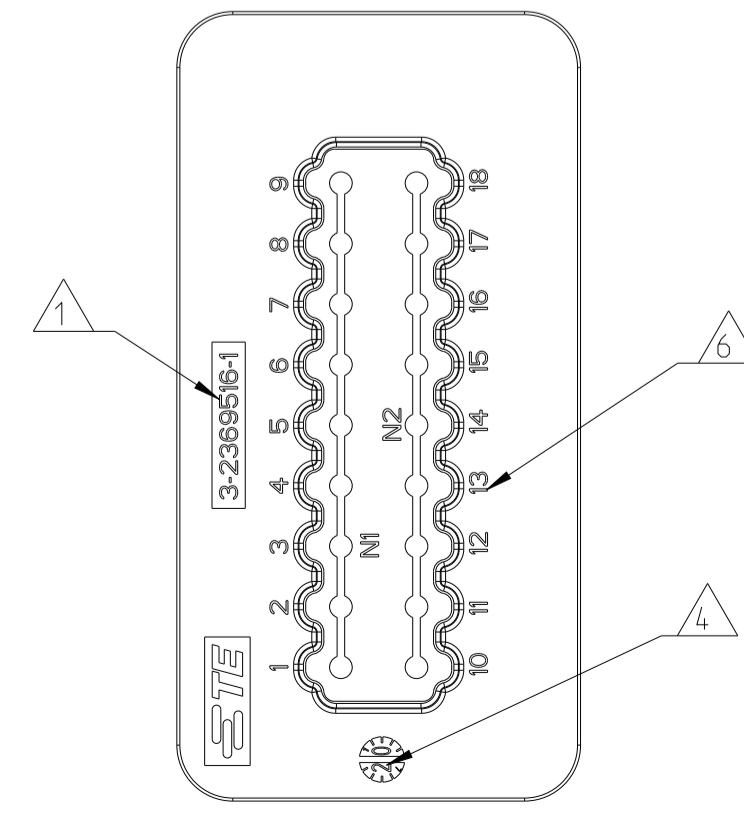
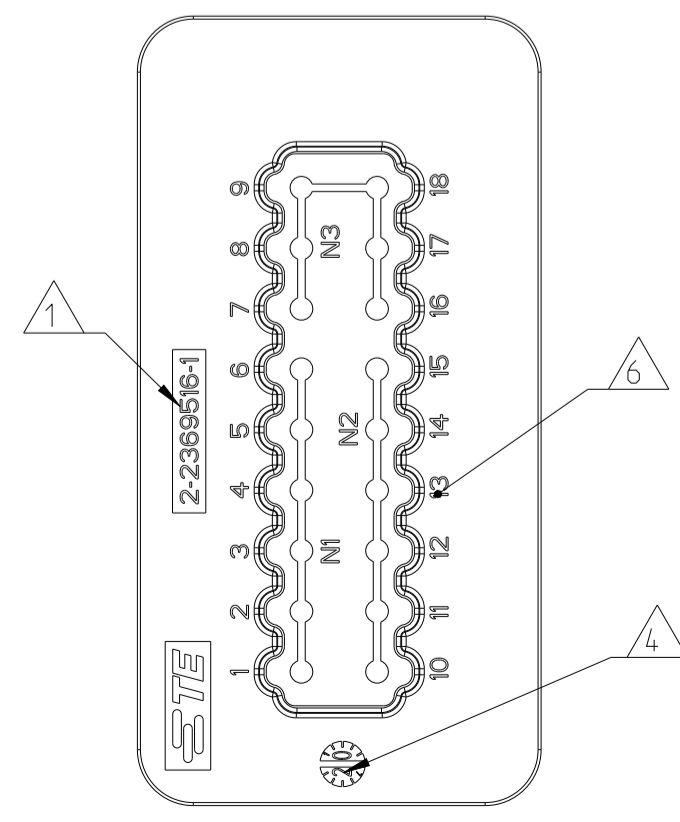
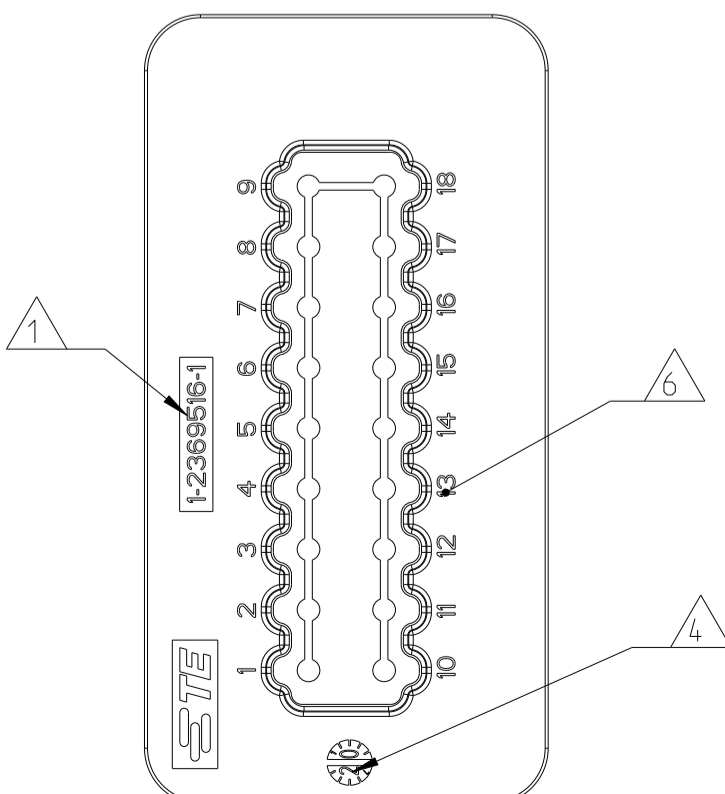
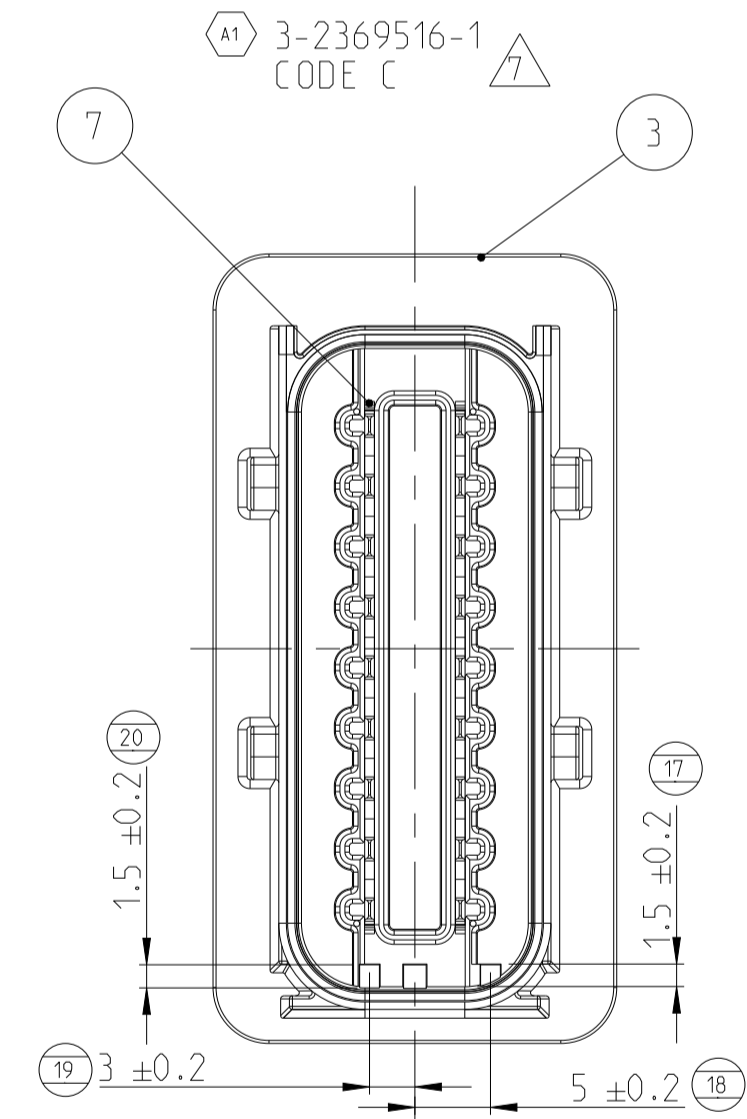
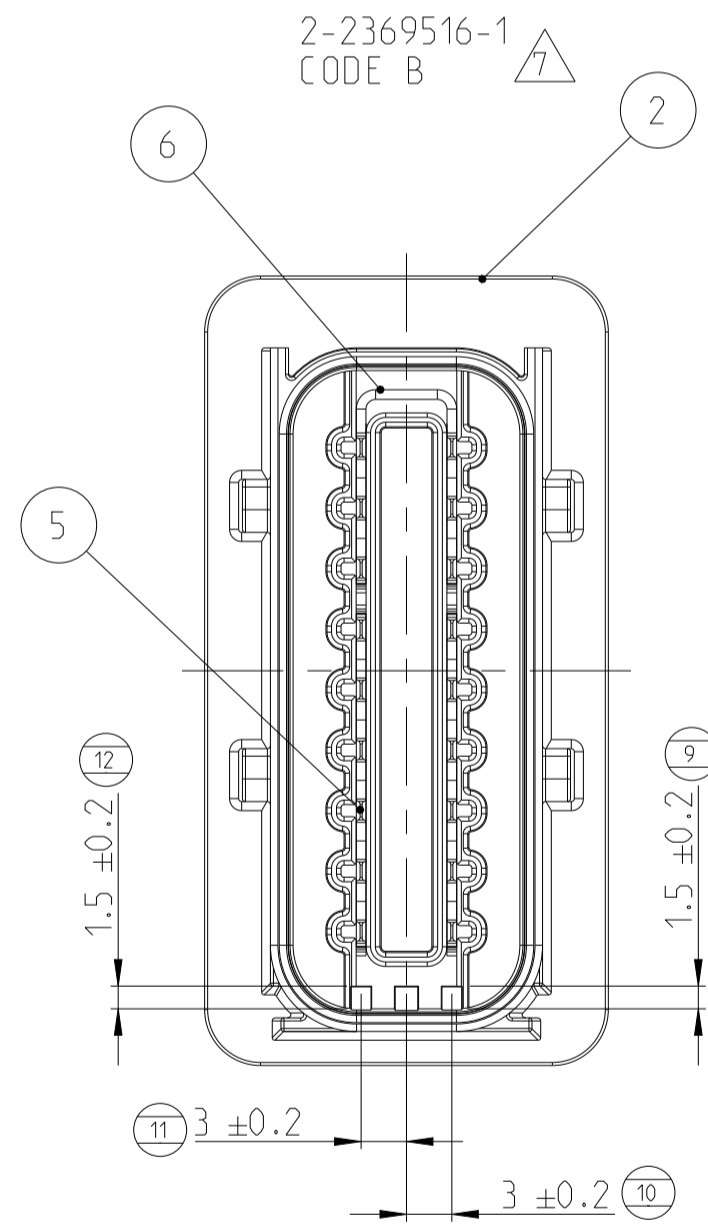
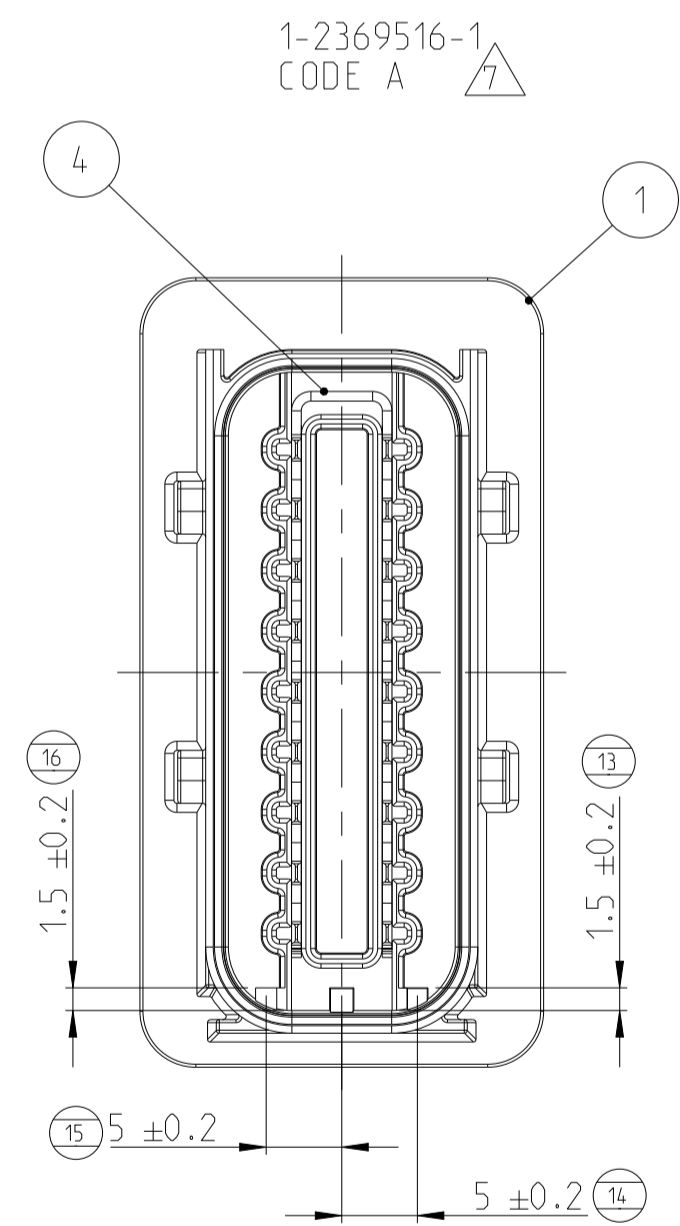
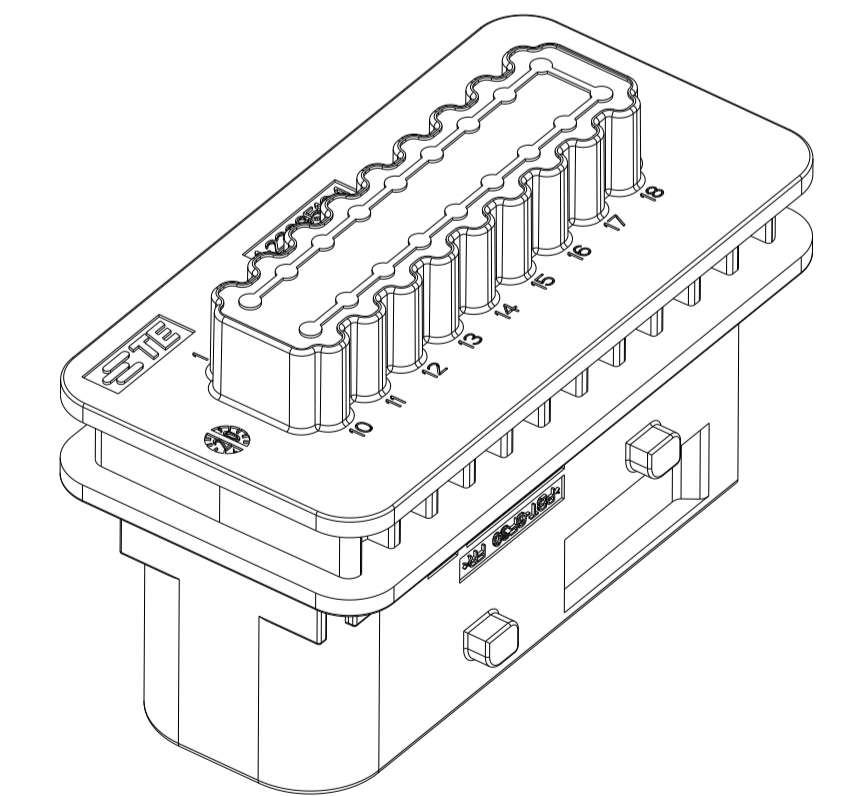
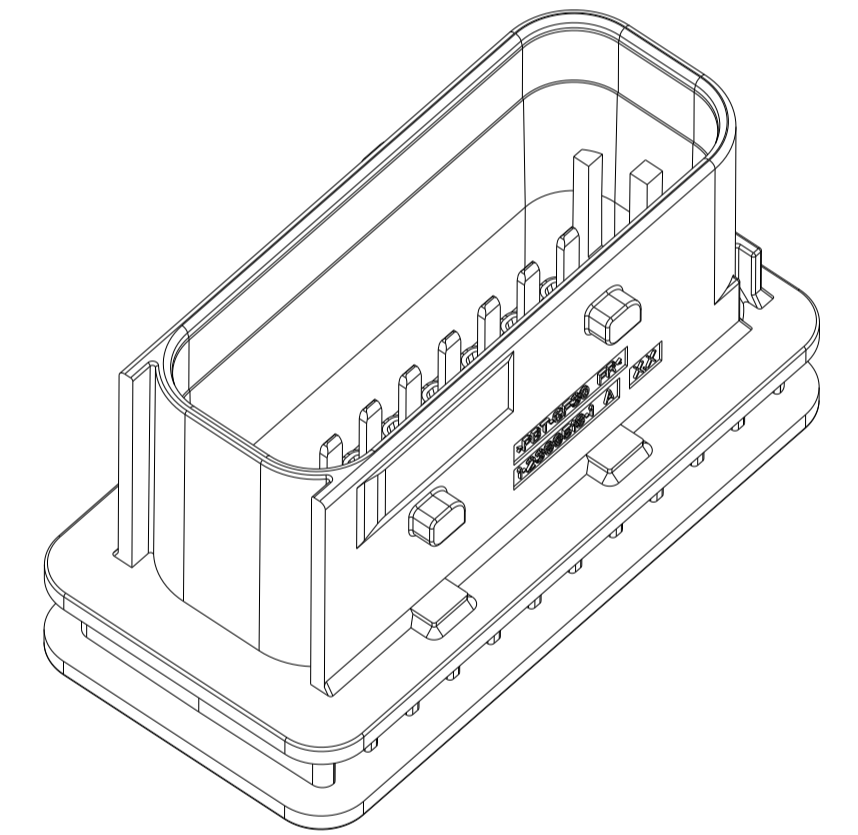
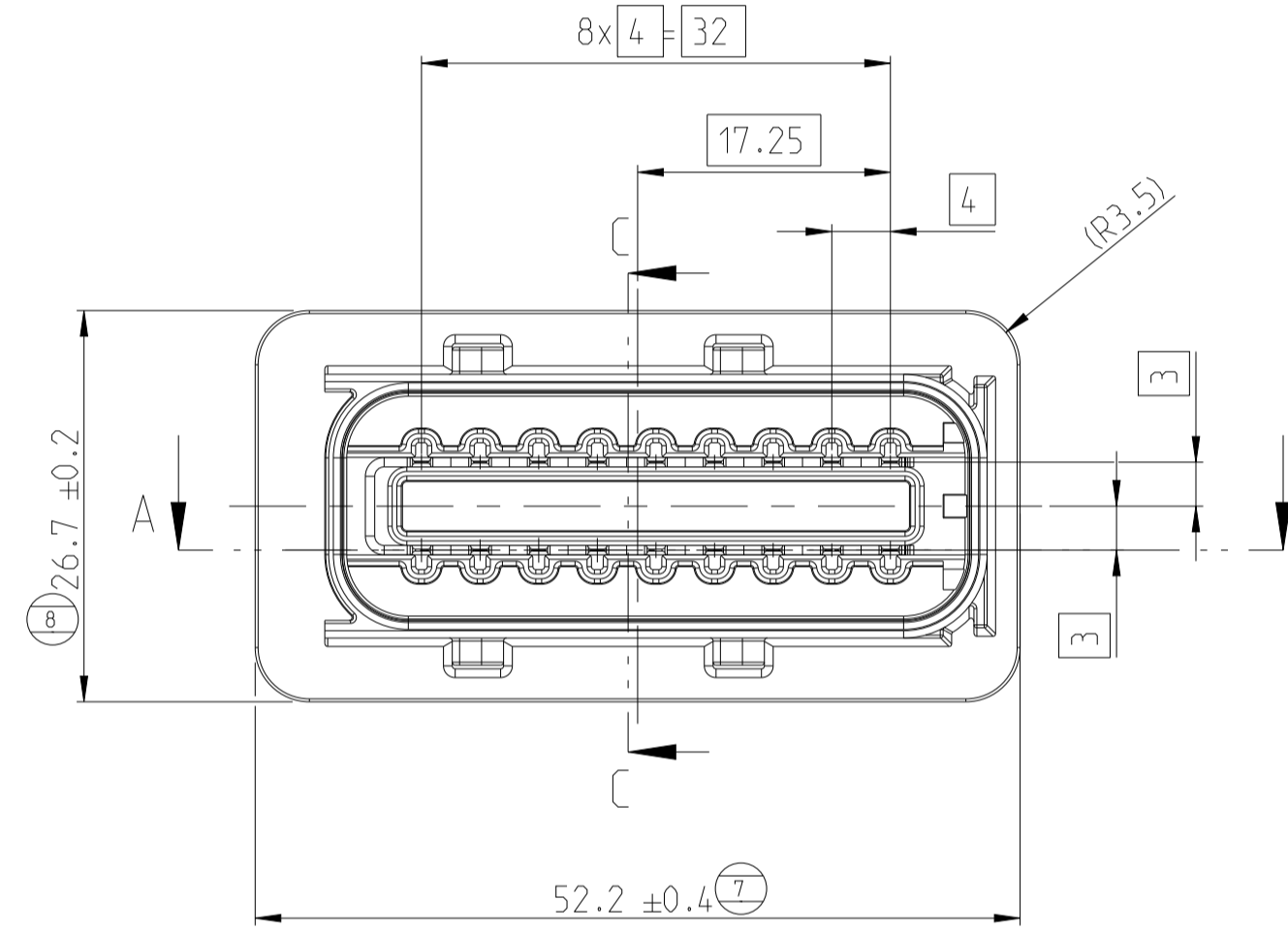


SECTION C-C  
Schnitt



NOTES  
Bemerkungen

- 1 TE CONNECTIVITY (TE) ORDER-NUMBER  
TE Connectivity (TE) Bestellnummer
  - 2 TE SINGLE PART NUMBER  
TE Einzelteilnummer
  - 3 MATERIAL MARKING ACCORDING TO VDA 260  
Materialkennzeichnung nach VDA 260
  - 4 PRODUCTION DATE  
Produktionsdatum
  - 5 MOLD CAVITY MARKING  
Nestmarkierung
  - 6 CONTACT CAVITY NUMBERING  
Kammernumerierung
  - 7 DIFFERENT CODINGS.  
Unterschiedliche Kodierungen.
8. SUITABLE COUNTERPART: 18POS. HDSCS RECEPTACLE HOUSING  
PN 1-1563759-1 FOR CODE A OR PN 2-1563759-1 FOR CODE B  
OR PN 3-1563759-1 FOR CODE C.  
Passendes Gegenstück: 18pol. HDSCS Buchsengehäuse  
PN 1-1563759-1 fuer Kodierung A oder PN 2-1563759-1 fuer Kodierung B  
oder PN 3-1563759-1 fuer Kodierung C.
9. PACKED INTERLAYERED IN CORRUGATED SHIPPING BOX  
Verpackt in Lagen angeordnet im Versandkarton



ITEM NO	DESCRIPTION	MATERIAL	COLOUR / FINISH
1	18 POS HOUSING GROUP E, CODE A	PBT-GF30	BLACK
2	18 POS HOUSING GROUP E, CODE B	PBT-GF30	GREY
3	18 POS HOUSING GROUP E, CODE C	PBT-GF30	GREEN
4	1.5MM TAB BAR, 18POS., BENT	Cu50-15	SILVER PLATED
5	1.5MM TAB BAR, 6POS., STRAIGHT	Cu50-15	SILVER PLATED
6	1.5MM TAB BAR, 6POS., BENT	Cu50-15	SILVER PLATED
7	1.5MM TAB BAR, 9POS., STRAIGHT	Cu50-15	SILVER PLATED

TE ORDER-NO. TE Bestell-Nr.	REV.	NO. OF POS. Polzahl	CODE Kodierung	QUANTITY Stueck	ITEM NO ASSY
3-2369516-1	A	18(9X2)	C	2	3
2-2369516-1	A	18(6X3)	B	1	2
1-2369516-1	A	18	A	1	1

DIMENSIONS:		TOLERANCES UNLESS OTHERWISE SPECIFIED:	
mm	0.15	0.15	0.15
mm	0.25	0.25	0.25
mm	0.50	0.50	0.50
mm	1.00	1.00	1.00
mm	1.50	1.50	1.50
mm	2.00	2.00	2.00
mm	3.00	3.00	3.00
mm	4.00	4.00	4.00
mm	5.00	5.00	5.00
mm	6.00	6.00	6.00
mm	8.00	8.00	8.00
mm	10.00	10.00	10.00
mm	12.00	12.00	12.00
mm	15.00	15.00	15.00
mm	20.00	20.00	20.00
mm	25.00	25.00	25.00
mm	30.00	30.00	30.00
mm	40.00	40.00	40.00
mm	50.00	50.00	50.00
mm	60.00	60.00	60.00
mm	80.00	80.00	80.00
mm	100.00	100.00	100.00

TOLERANCING EN ISO 8015  
TOLERIERUNG EN ISO 8015

DIESE ZEICHNUNG IST EIN KONTROLLIERTES DOKUMENT.  
BEMASSUNGEN UND TOLERANZEN GEMAESS GPS (ISO STANDARDS).

THIS DRAWING IS A CONTROLLED DOCUMENT.

DIMENSIONING AND TOLERANCING PER GPS (ISO STANDARDS)

FINISH: SEE TABLE

WEIGHT: 20.8g

CUSTOMER DRAWING

NAME	DATE	APVD	REV
18POS.TAB1.6X0.6.HDR.ASSY.180DEG 18POS. POTENTIAL DISTR. HDSCS GROUP E 18pol. Potentialverf. HDSCS Gruppe E	28 JUL 2020	SONAL PAL	1
	29 JUL 2020	SHIVAKUMAR HERAKAL	2
	30 JUL 2020	GURUMURTHY C R	3



SIZE	CAGE CODE	DRAWING NO	RESTRICTED TO
A1	00779	2369516	