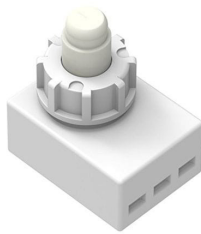


Switches

Push Switches

3.8mm-travel Push-push Type
SPED3 Series

Provides smooth and linear operation feel.



Automotive

- Rating (max.)/(min.) (Resistive load): 2A 14.5V DC / -
- Contact resistance (Initial performance/After lifetime):
100mΩ max./100mΩ max.
- Operating life with load (at max. rated load): 30,000 cycles 100mΩ max.

Applications: Automotive: Map Lamp

Product List

Products No.	Total travel (mm)	Poles	Positions	Operating force	Changeover timing	Mounting method	Operation	Dimensions (W×D×H) (mm)	Automotive	Drawing No.
SPED310200	3.8	1	2	4.17±0.74N	Non shorting	Connector	Alternate	18.0×14.0×7.4	●	1

Note

- This catalog shows only outline specifications. When using the products, please obtain formal specifications for supply.
- Please place purchase orders per minimum order unit (integer).
- This products can be used in vehicles.

Although these products are designed to perform over a wide operating temperature range, please ensure that you receive and read the formal delivery specifications before use.

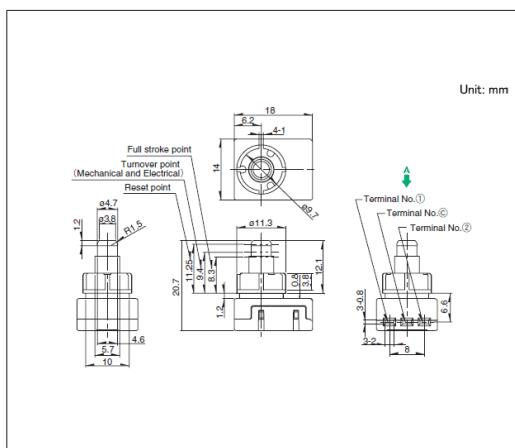
Packing Specifications

Bulk

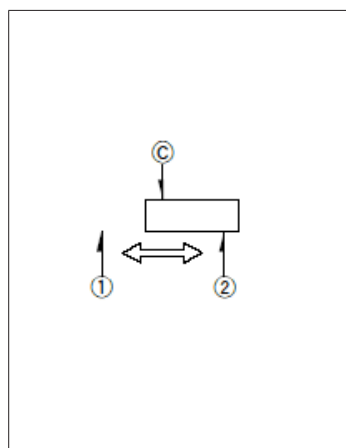
Number of packages (pcs.)		Export package measurements (mm)
1 case / Japan	1 case / export packing	
500	2,500	400 x 270 x 290

Drawing No.1

Dimensions



Circuit Diagram



Factory setting for contact points can be either 1 or 2.