



MAXREFDES36# IO-Link 16-Channel Digital Input Hub Quick Start Guide

Rev 0; 5/14



Maxim Integrated cannot assume responsibility for use of any circuitry other than circuitry entirely embodied in a Maxim Integrated product. No circuit patent licenses are implied. Maxim Integrated reserves the right to change the circuitry and specifications without notice at any time.

Maxim Integrated 160 Rio Robles, San Jose, CA 95134 USA 1-408-601-1000

© 2014 Maxim Integrated Products, Inc.

Maxim Integrated and the Maxim Integrated logo are trademarks of Maxim Integrated Products, Inc.

Table of Contents

1. Required Equipment	3
2. Overview	3
3. Included Files	5
4. Procedure	6
5. Appendix A: Project Structure and Key Filenames	26
6. Trademarks	26
7. Revision History	27

1. Required Equipment

- PC with Windows® 7 (*Verify with Balluff that your version of Windows is supported before purchasing their software.*)
- MAXREFDES36# board
- One Balluff USB IO-Link® master (silver box) with corresponding USB and power cables (This must be purchased separately.)
- Balluff IO-Link Device Tool (tested with version 2.11.1 and comes with the Balluff USB IO-Link master)
- One IO-Link cable (yellow) (This must be purchased separately.)
- RD36_RL78_V01_XX.ZIP (Maxim-SanFrancisco-20140127-IODD1.0.1.xml), where XX = minor version

2. Overview

Below is a high-level overview of the steps required to quickly get the MAXREFDES36# design running by connecting it to the Balluff USB IO-Link master and Balluff software. Detailed instructions for each step are provided in the following pages.

- 1) Connect the A-to-B Type USB cable from the PC and yellow IO-Link cable to the Balluff USB IO-Link master (silver box with part number BNI USB-901-000-A501) as shown in [Figure 1](#).
- 2) Connect the MAXREFDES36# board to the other side of the yellow IO-Link cable. Make sure the green LED is lit as shown in [Figure 2](#). The red and yellow LEDs do not need to be lit.
- 3) Download the latest “all design files” **RD36V01_XX.ZIP** file located at the MAXREFDES36# reference design page.
- 4) Extract the **RD36V01_XX.ZIP** file to a directory on your PC.
- 5) Install the Balluff IO-Link Device Tool.
- 6) Add the MAXREFDES36# digital input hub as a device into the Balluff IO-Link Device Tool.
- 7) Connect to the MAXREFDES36# by pressing the online connection button.

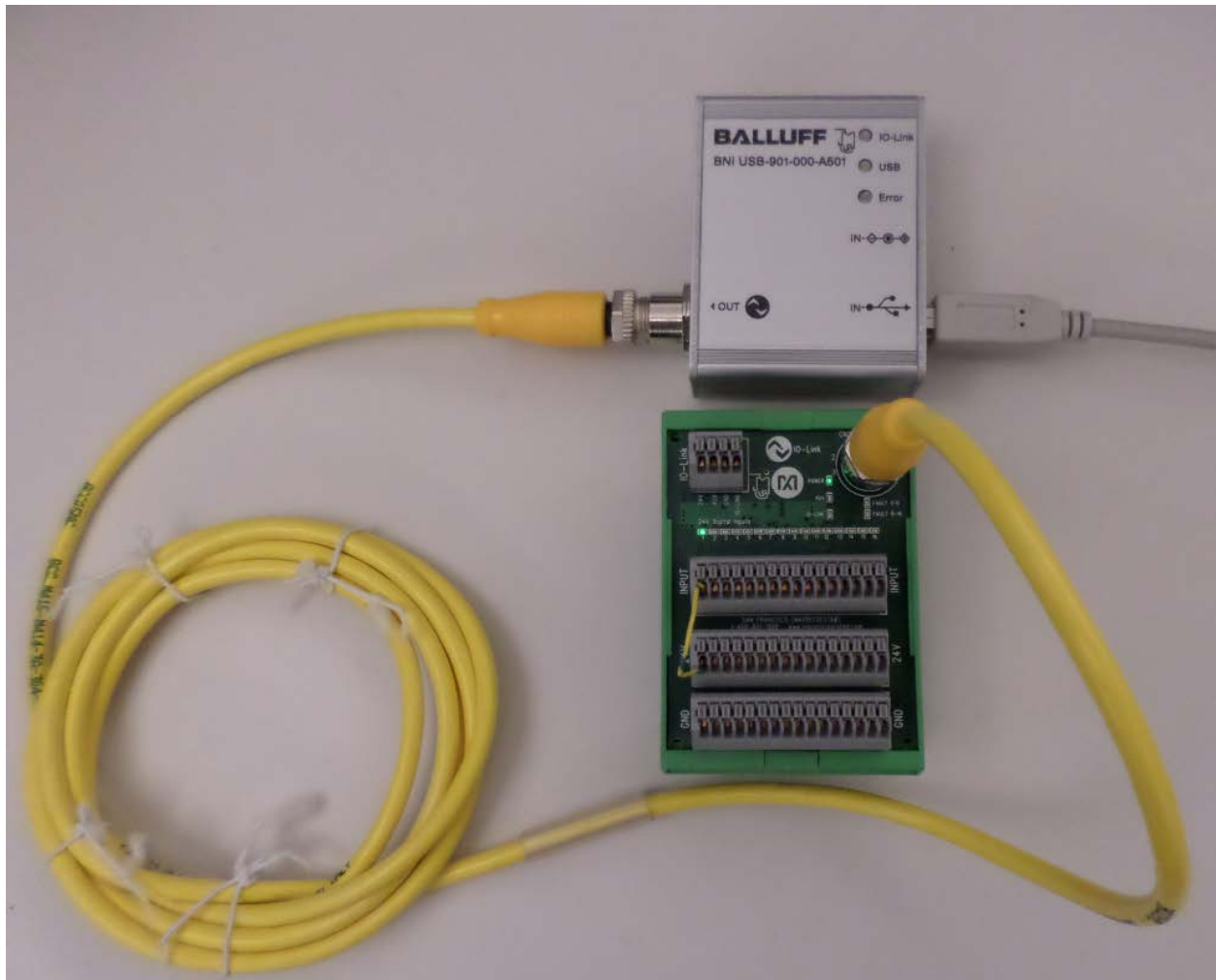


Figure 1. MAXREFDES36# Board Connected to a Balluff USB IO-Link Master

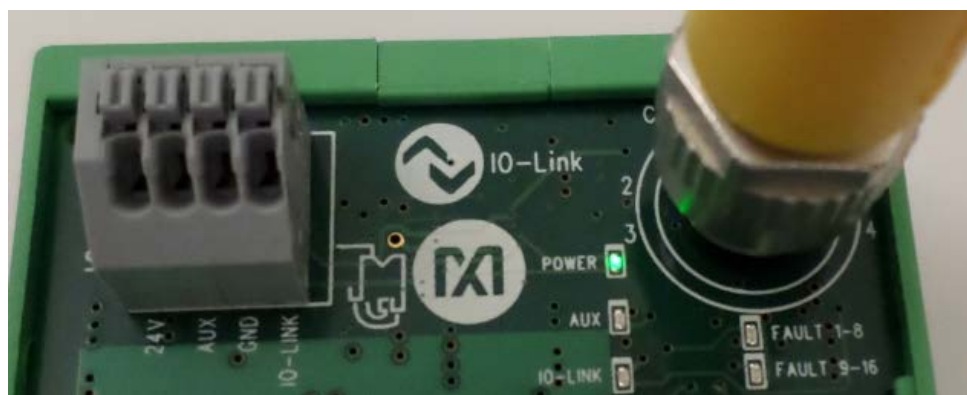


Figure 2. Green LED Is Lit

3. Included Files

The **RD36_RL78_V01_XX.ZIP** contains the corresponding IO-Link Device Descriptor (IODD) files. The IODD contains information on communication properties, device parameters, identification, process, and diagnostic data. It includes an XML file, an image of the device, an icon image, and the manufacturer's logo. The IODD structure is the same for all devices of all manufacturers, and is always represented in the same way by the IODD interpreter tools.

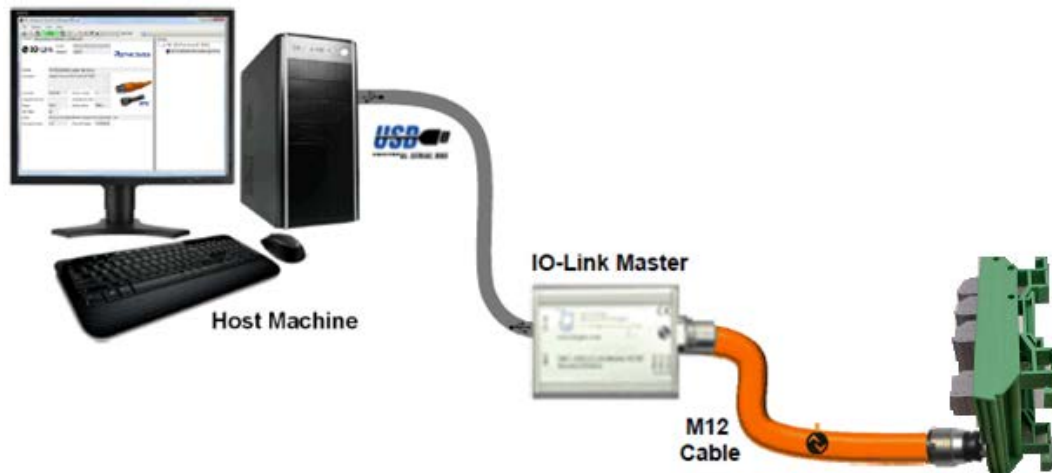
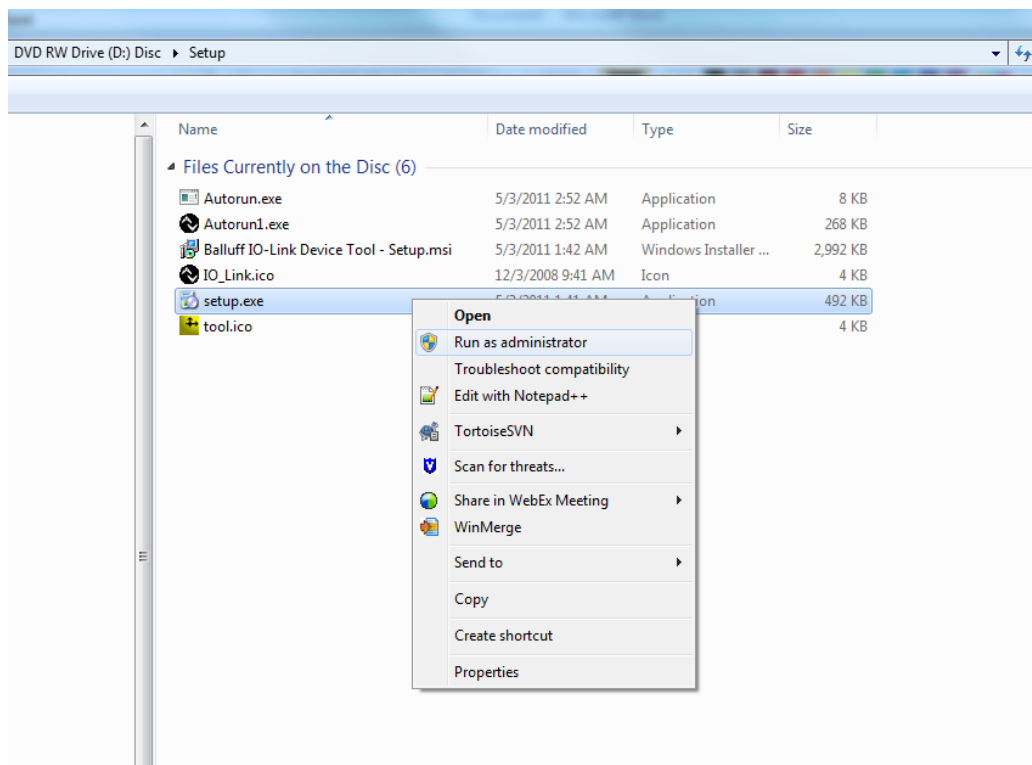


Figure 3. Block Diagram of System

4. Procedure

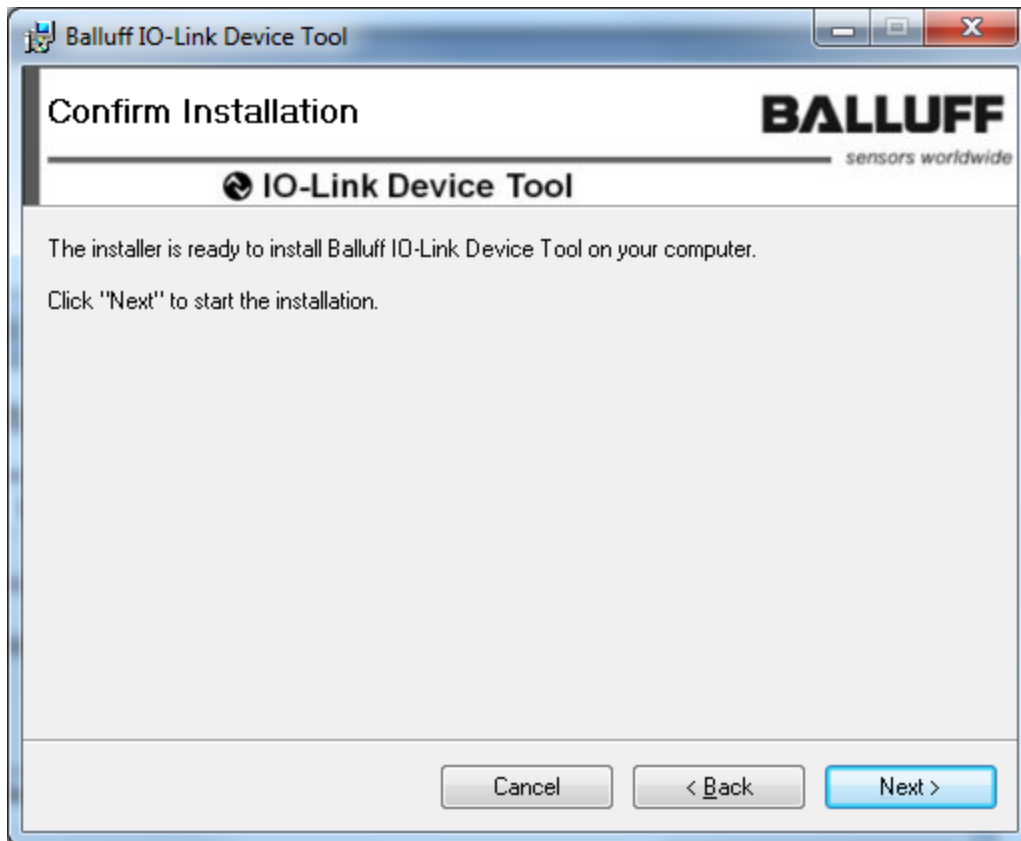
1. Connect the A-to-B Type USB cable from the PC and yellow IO-Link cable to the Balluff USB IO-Link master (silver box with part number BNI USB-901-000-A501) as shown in [Figure 1](#).
2. Connect the MAXREFDES36# proximity sensor board to the other side of the yellow IO-Link cable. Make sure the green LED is lit as shown in [Figure 2](#). The red and yellow LEDs do not need to be lit.
3. Download the latest “all design files” **RD36V01_XX.ZIP** file at www.maximintegrated.com/AN5879. All files available for download are available at the bottom of the page.
4. Extract the **RD36V01_XX.ZIP** file to a directory on your PC. The location is arbitrary but the maximum path length limitation in Windows (260 characters) should not be exceeded.
5. Install the Balluff IO-Link Device Tool. This tool comes with the purchase of the Balluff USB IO-Link master (silver box with part number BNI USB-901-000-A501). Run the **setup.exe** file using the **Run as administrator** mode.



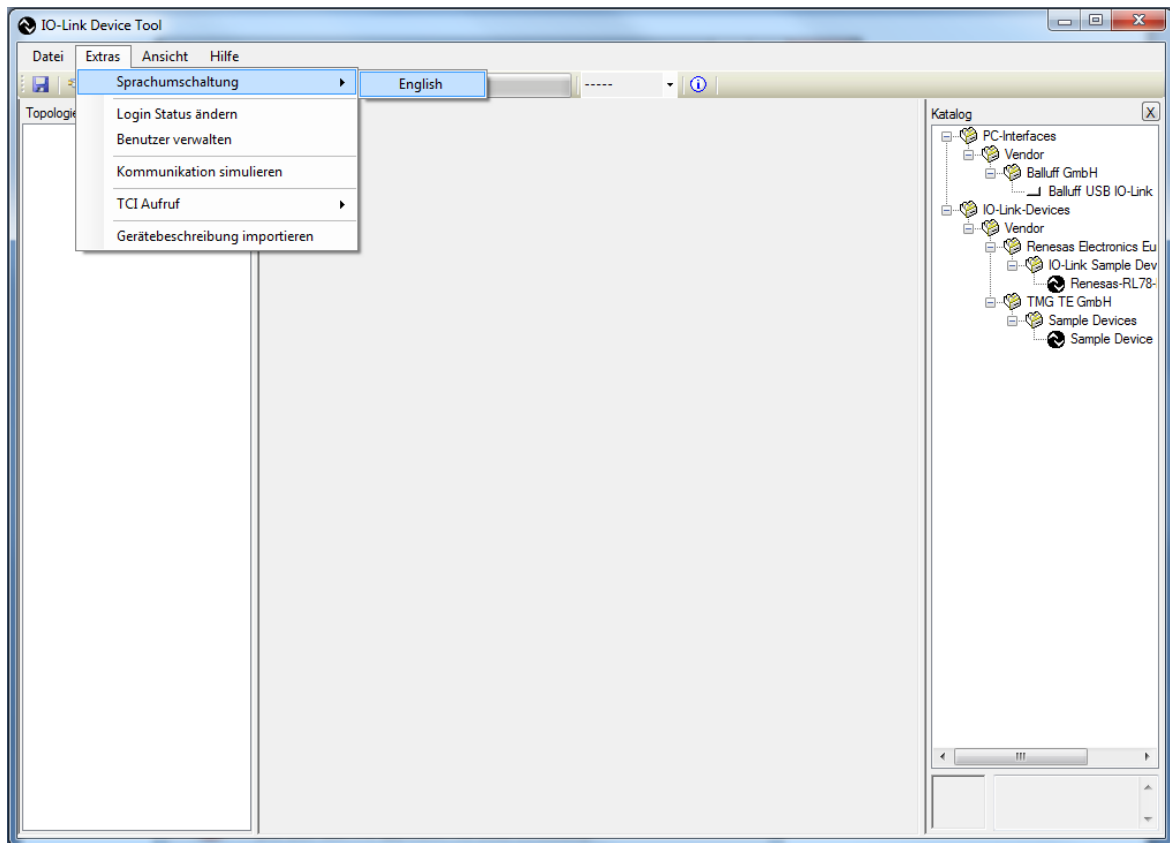
6. Choose the default installation folder and press the **Next** button.



7. Press the **Next** button.



8. Change the language to English if applicable.



9. Close the program by clicking the **X** in the top right corner.

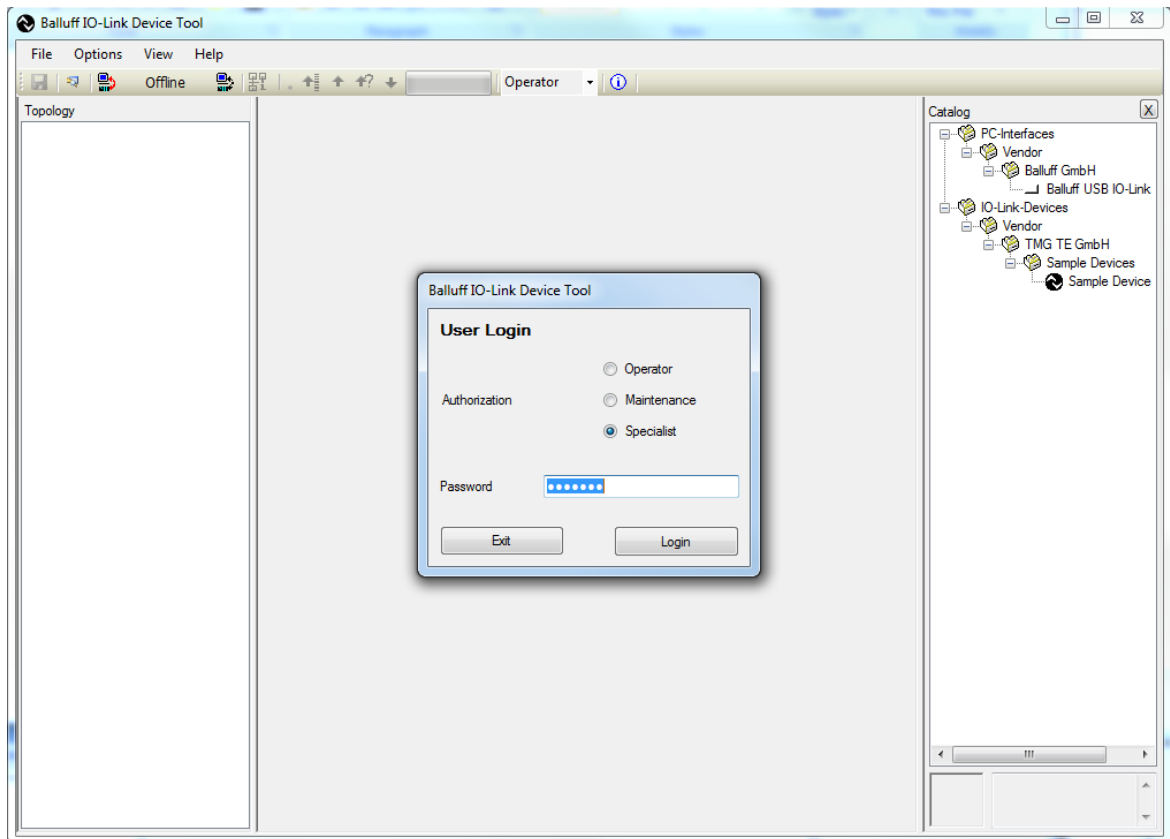
10. Press the **Close** button to complete the installation.



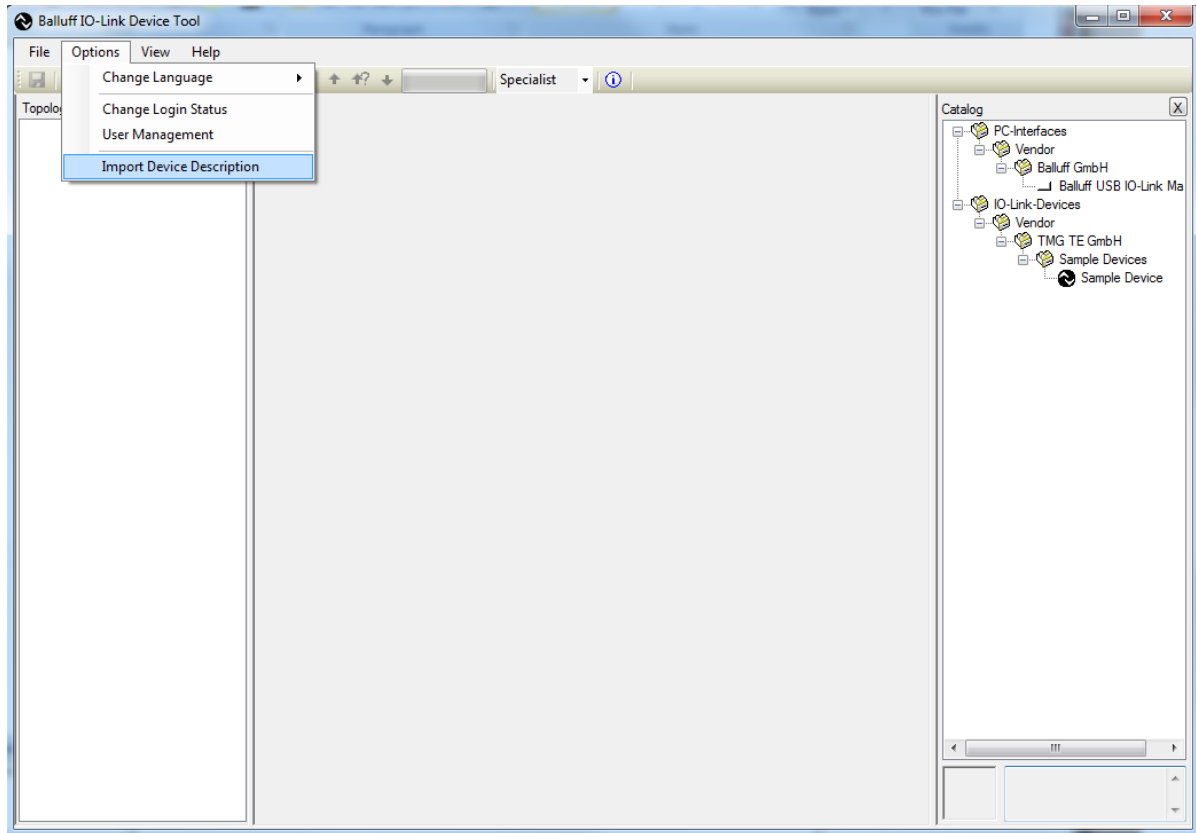
11. Verify the version of the IO-Link Device Tool. In this case, version 2.1.11 was used.



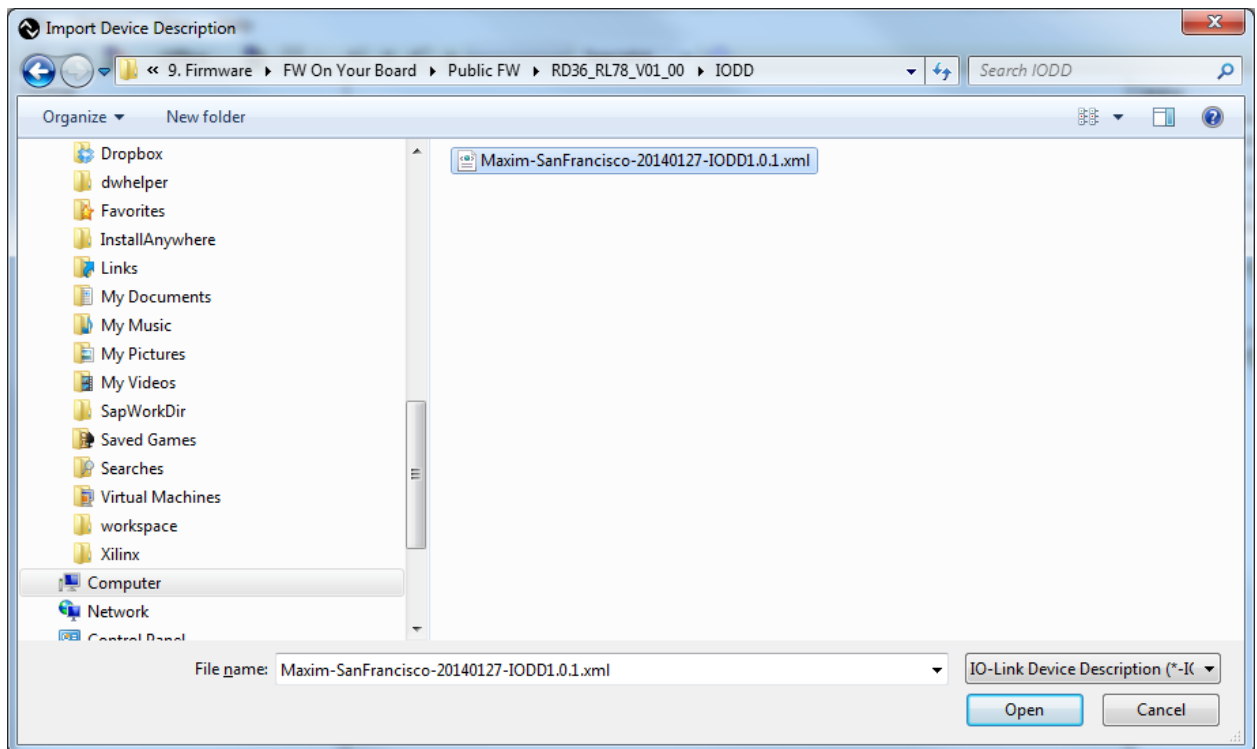
12. The **User Login** should be in **Specialist** mode. **Password** is **special**.



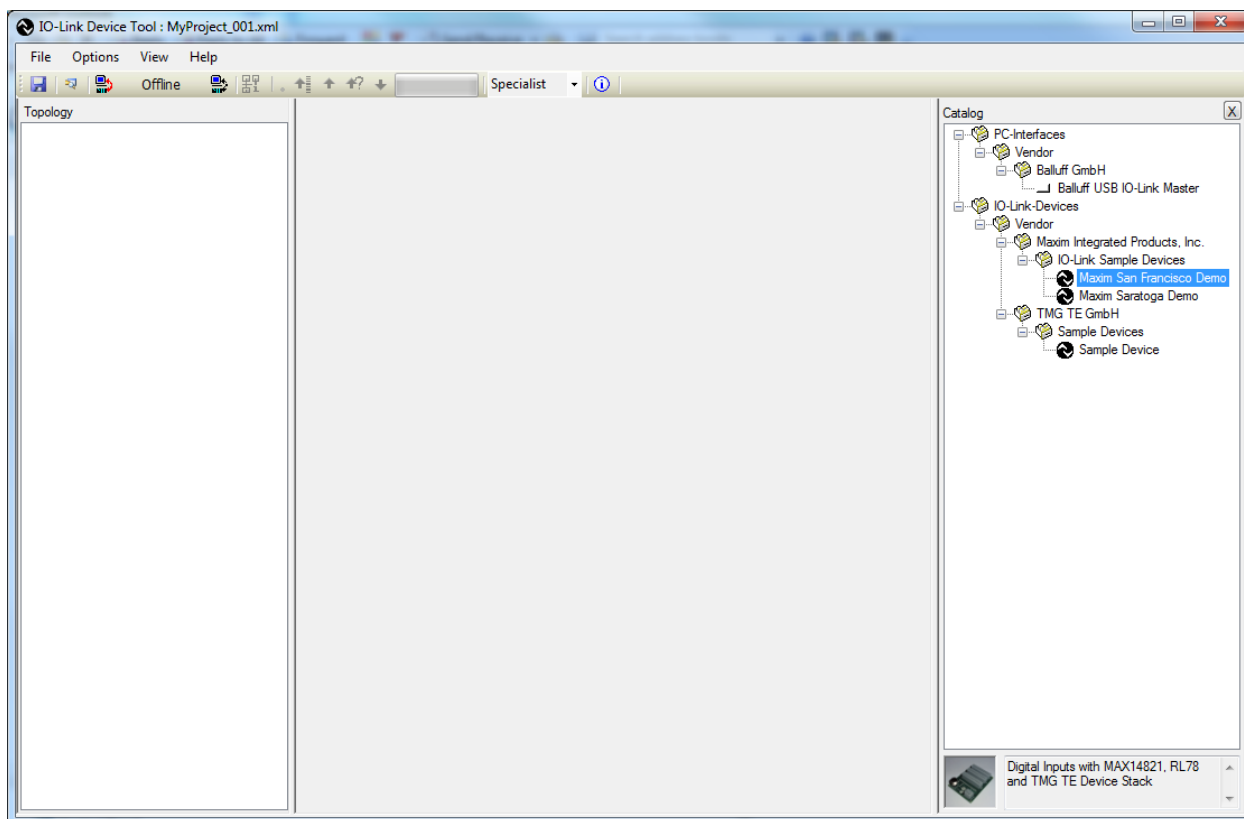
13. Import the IODD xml file for the Maxim device. In this case, the file is **Maxim-SanFrancisco-20140127-IODD1.0.1.xml** and can be located in the **RD36_RL78_V01_00.ZIP** file.



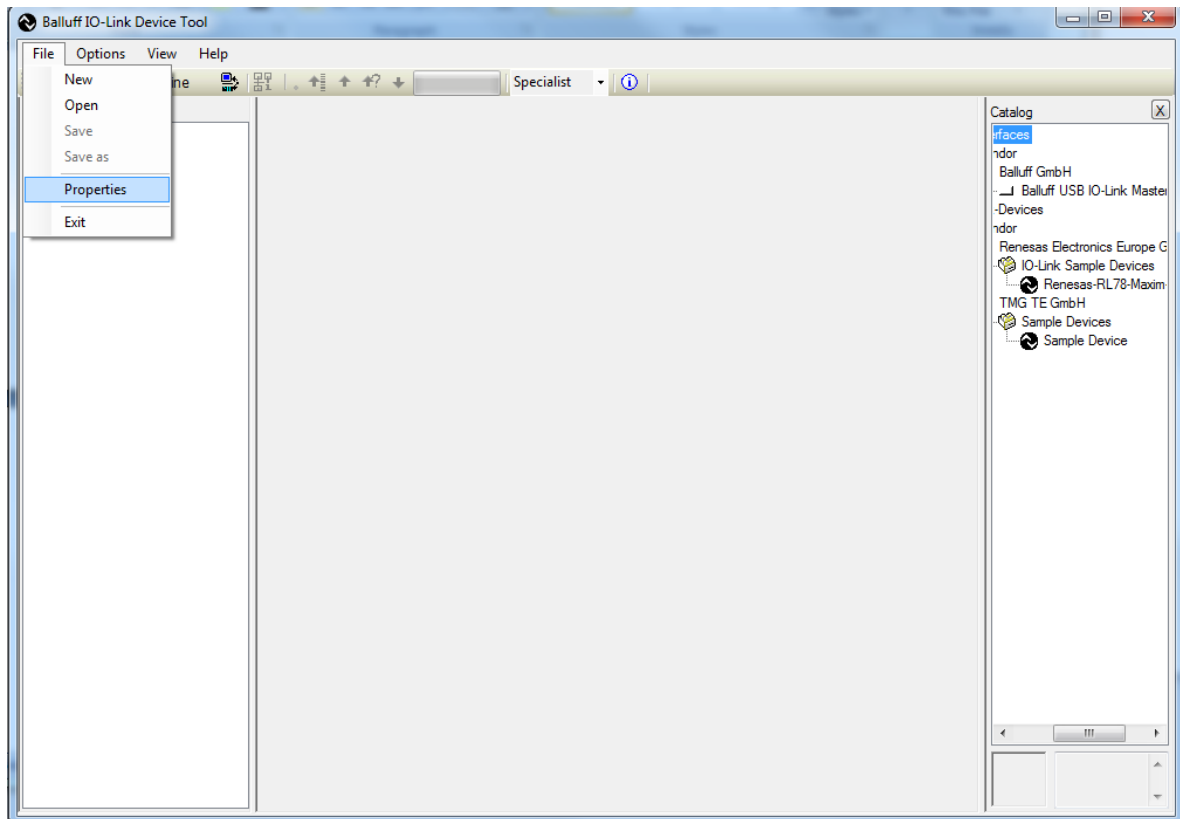
14. In this case, this is the IODD file shown below, but may be a different .xml file if a different Maxim device is used.



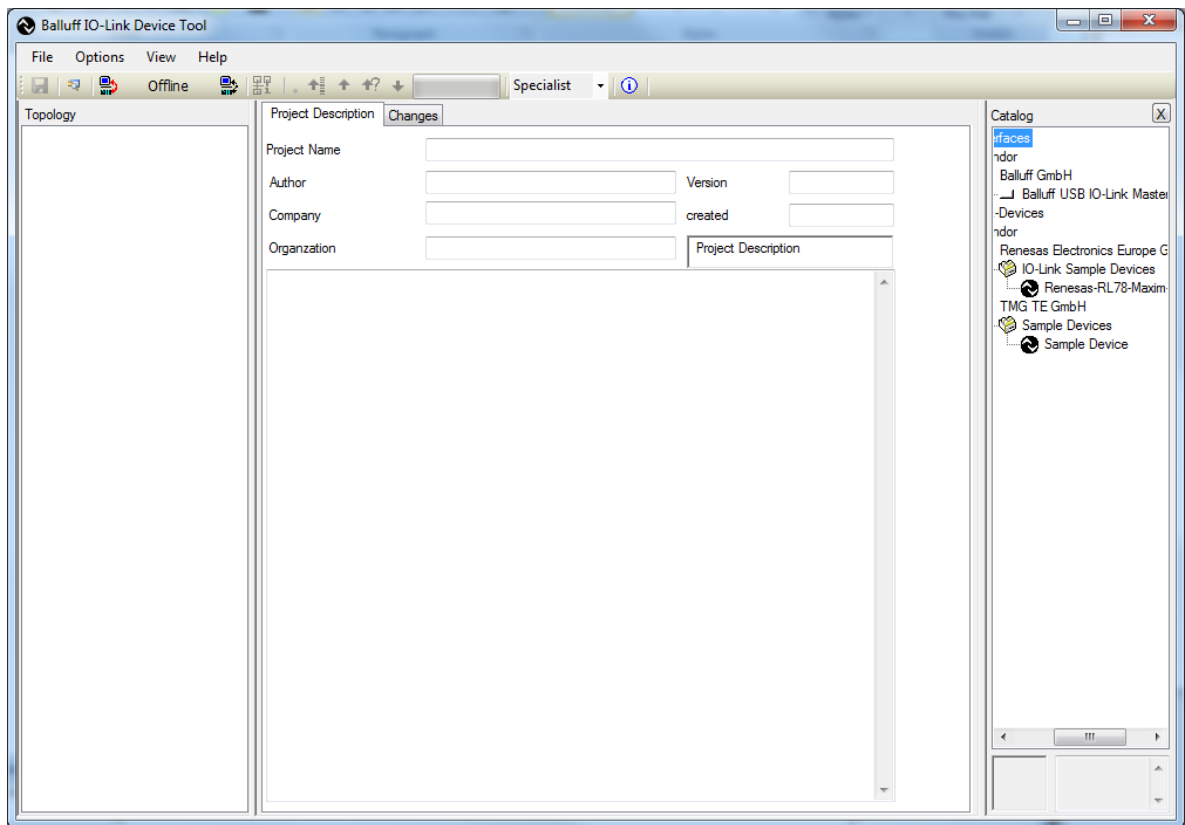
15. See the Maxim device show up in the IO-Link devices in the **Catalog** window.



16. Select **File | Properties**.

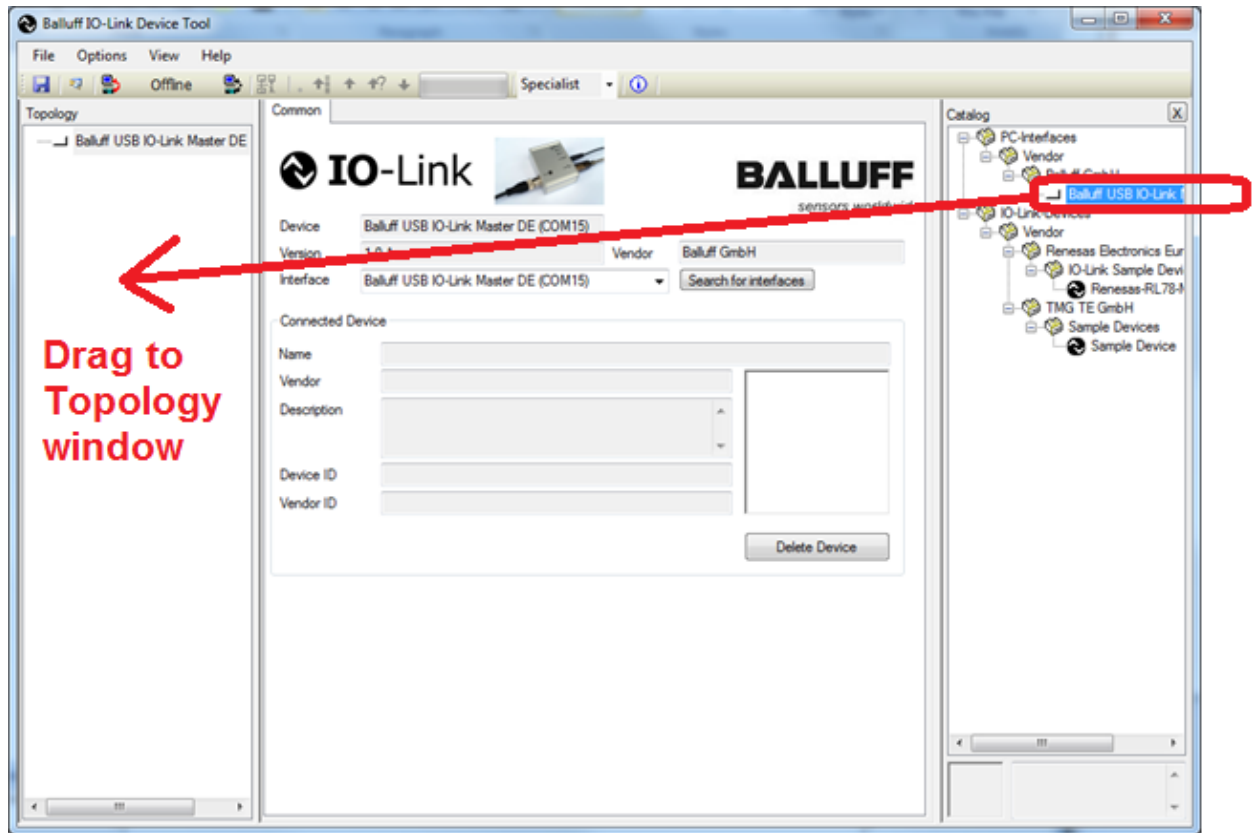


17. After **Properties** is selected, the screen looks like the below screenshot.

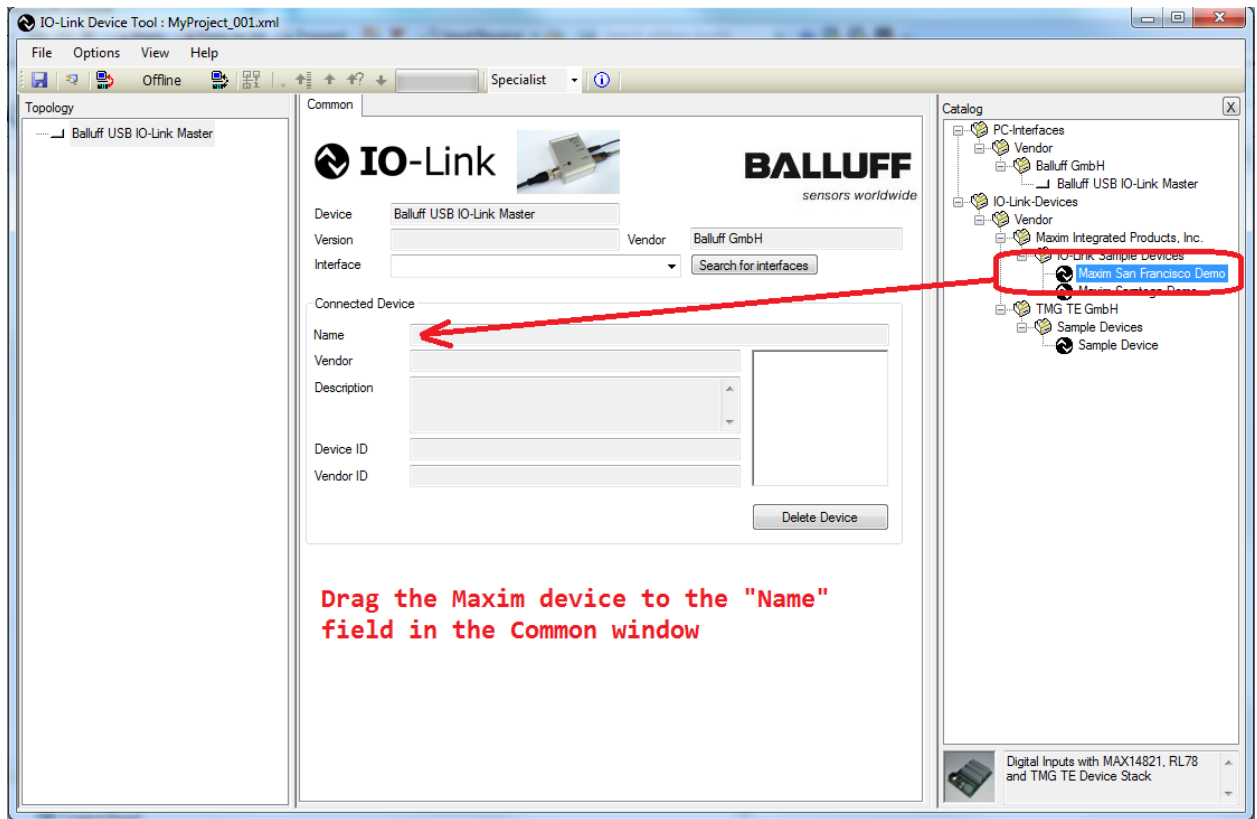


18. Verify that the USB cable is plugged into the silver USB IO-Link Master box.

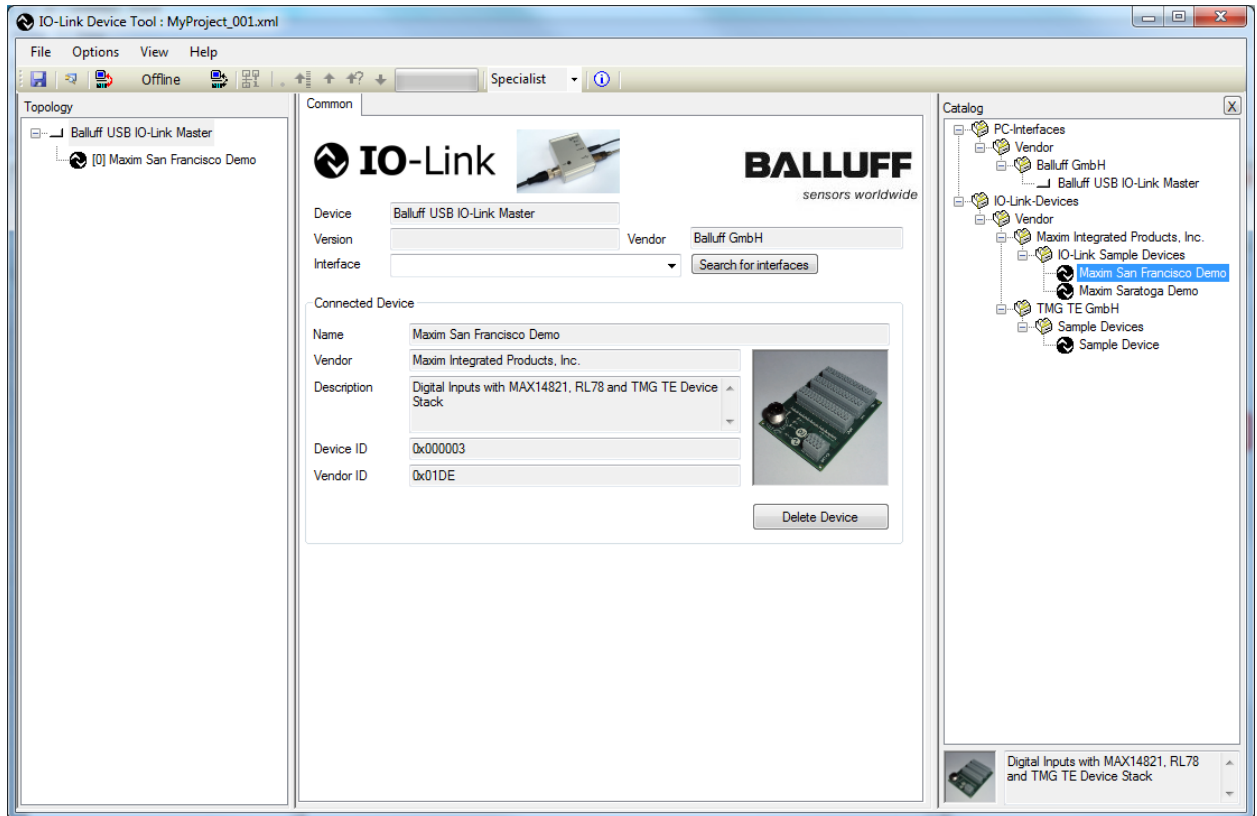
19. Drag the **Balluff USB IO-Link Master** to the **Topology** window.



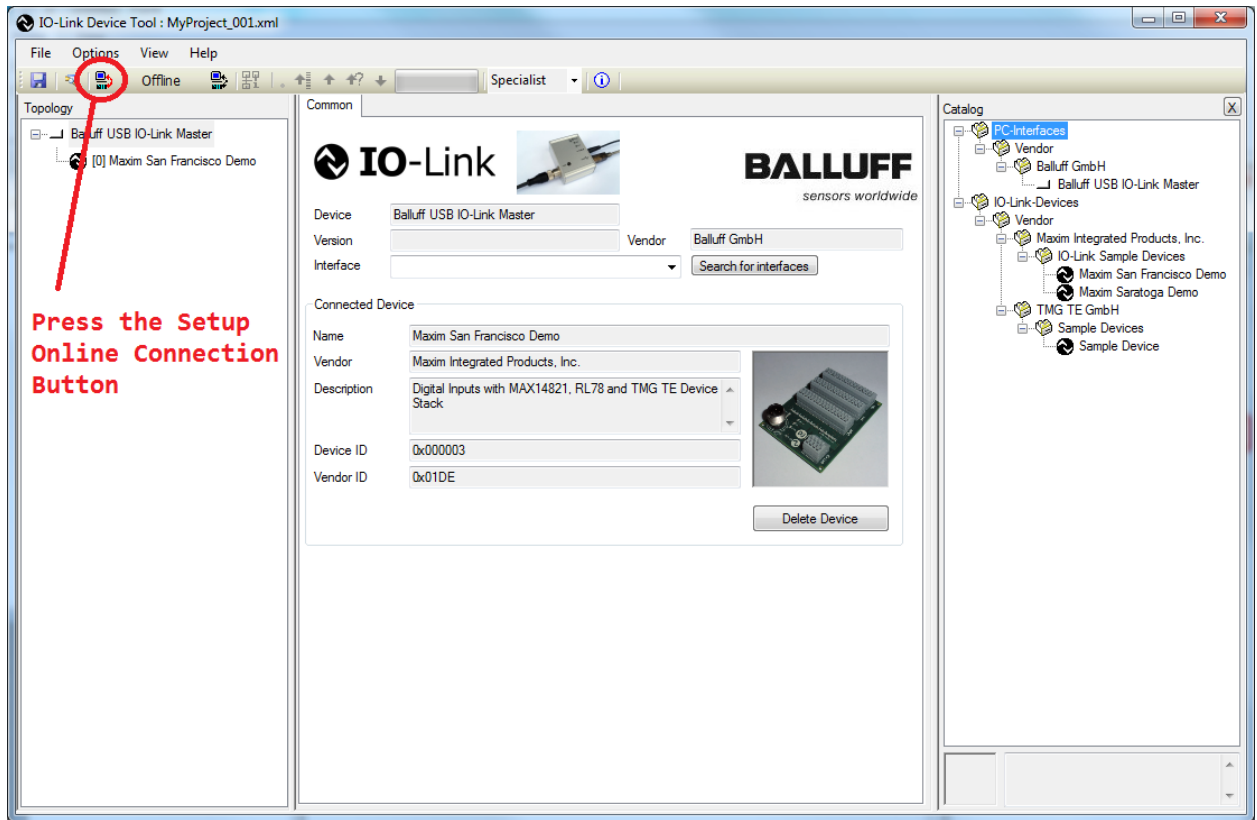
20. Drag the Maxim sensor to the **Name** field in the **Common** window.



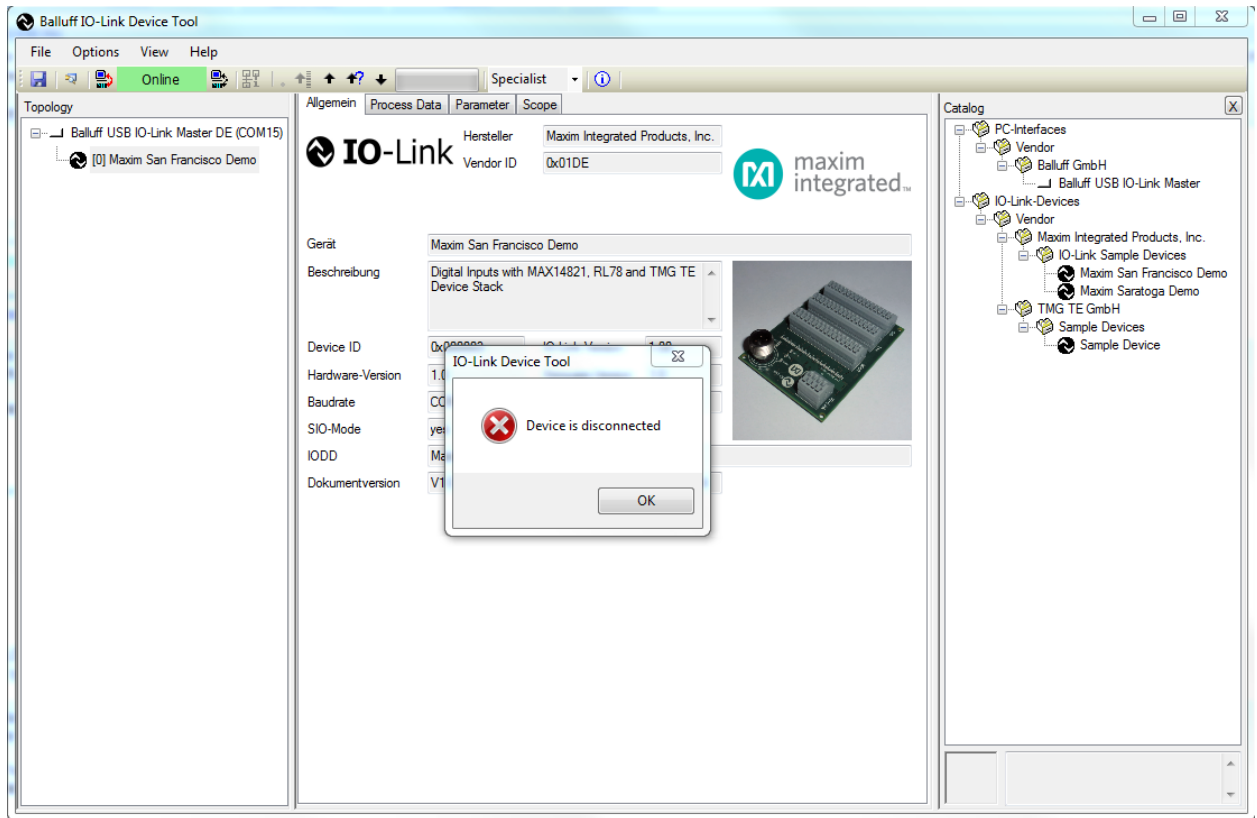
21. Verify a picture of the device shows up with the name **Maxim San Francisco Demo**.



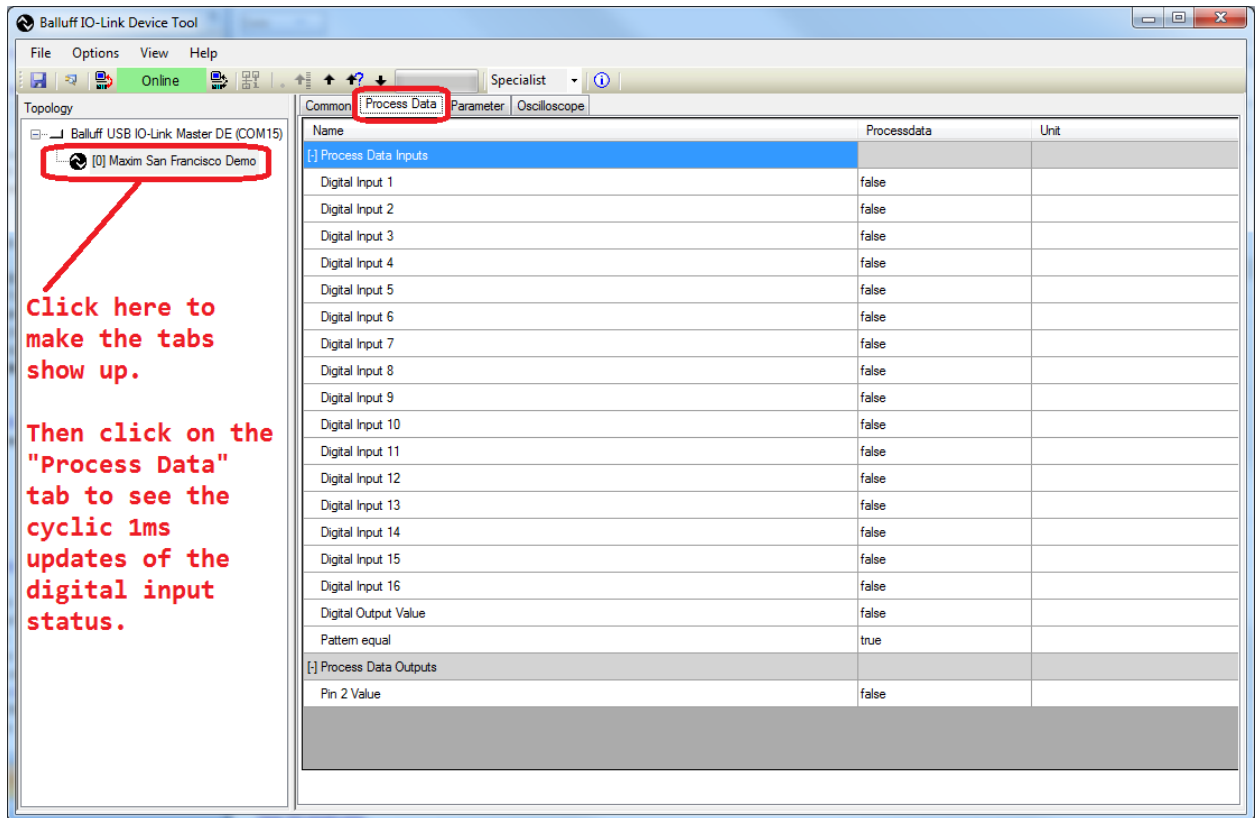
22. Press the **Connect** button on the Balluff IO-Link Device Tool software.



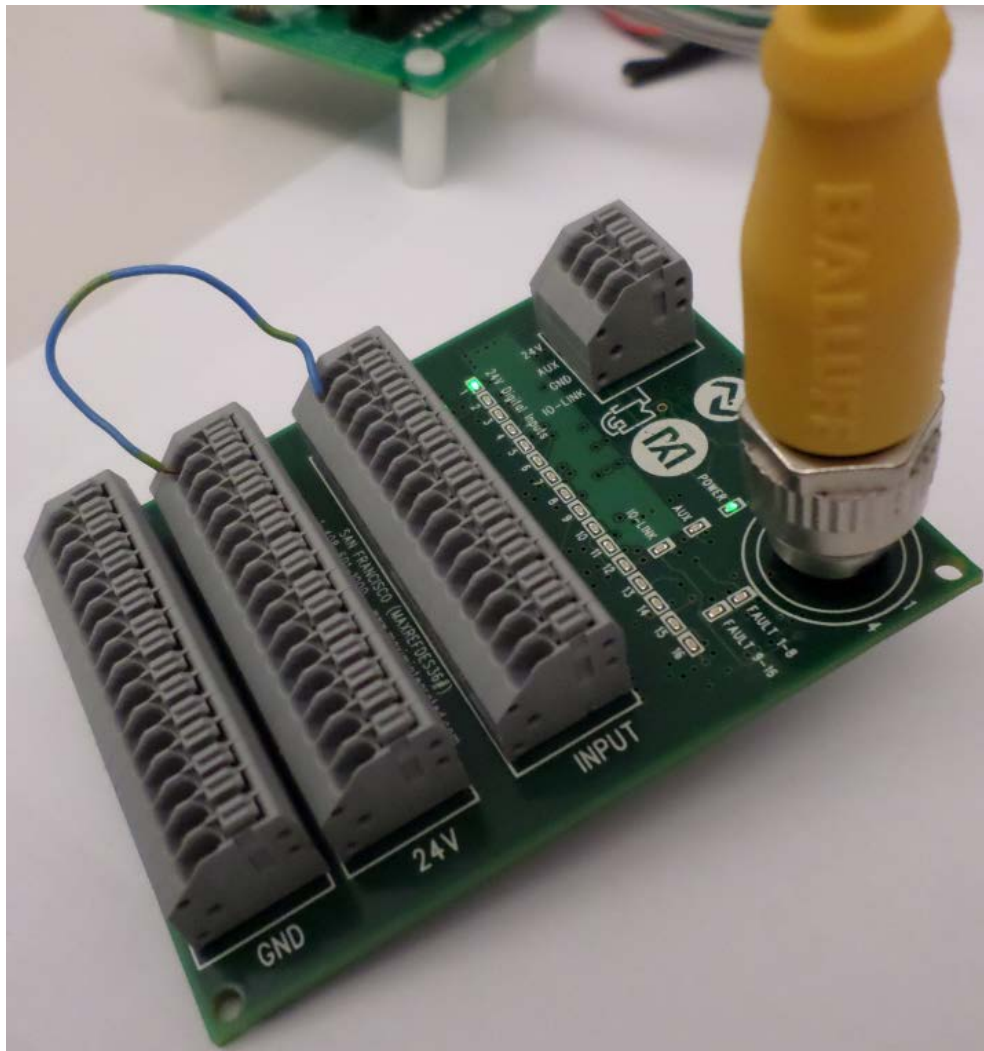
23. If your device has a problem or is unconnected, you will see the below figure. Please check that your device is connected to the IO-Link master.



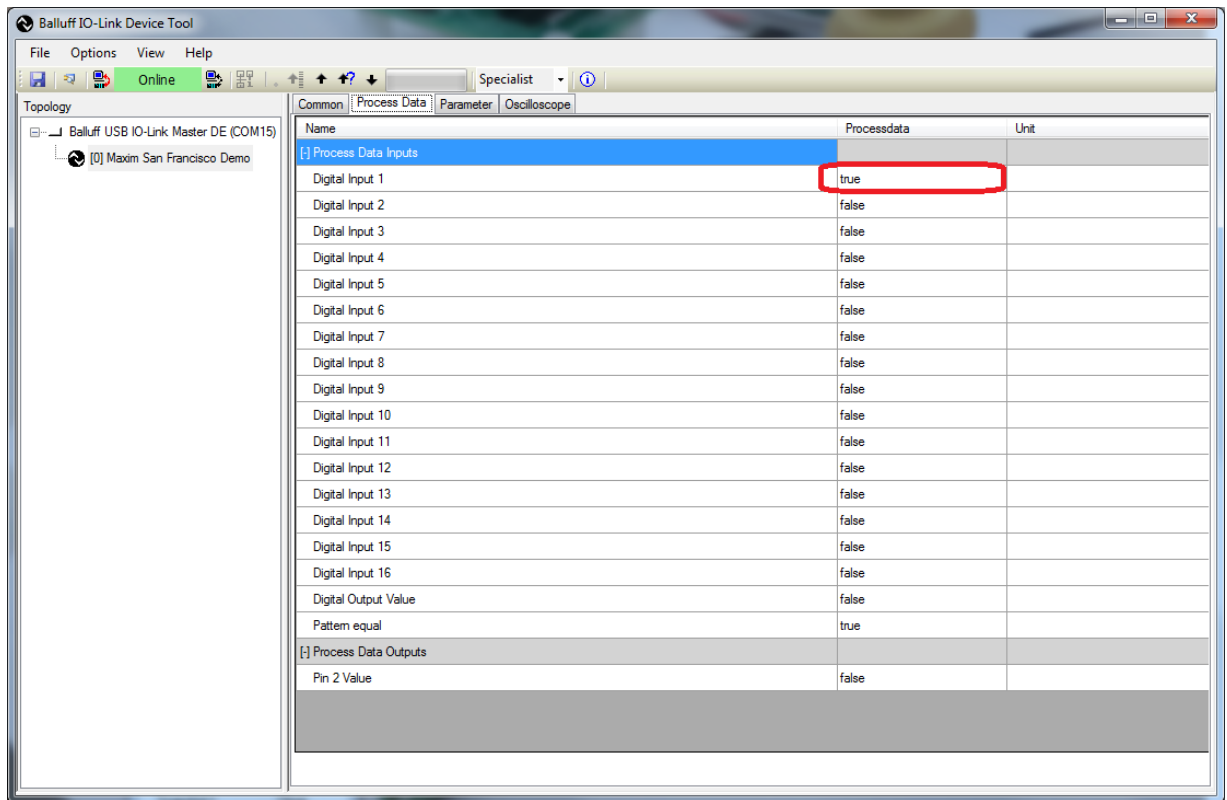
24. If you see the green **Online** indication on the software, the device has connected. Click on the Maxim device icon to make the tabs show up. Click on the **Process Data** tab.



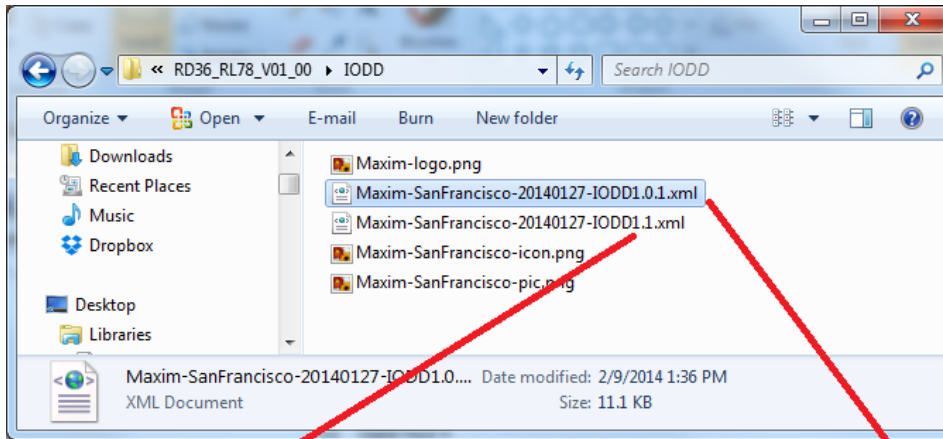
25. Connect a wire from the **24V** terminal block to the **INPUT** terminal block (digital input 1) as shown in the figure below.



26. Verify that the **Process Data** for **Digital Input 1** changes to **true**.

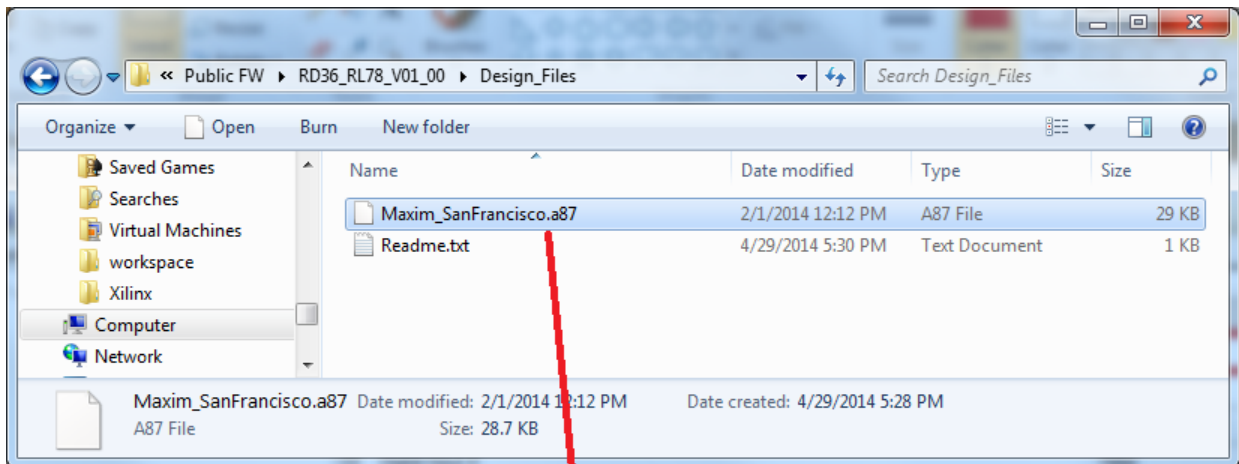


5. Appendix A: Project Structure and Key Filenames



IODD IO-Link Ver 1.1 Compliant

**IODD IO-Link Ver 1.01 Compliant
(Baluff USB IO-Link Master uses this one)**



Binary file programmed into the RL78

6. Trademarks

IO-Link is a registered trademark of ifm electronic GmbH.

Windows is a registered trademark and registered service mark of Microsoft Corp.

7. Revision History

REVISION NUMBER	REVISION DATE	DESCRIPTION	PAGES CHANGED
0	5/14	Initial release	—