

LUMOTAST 25, emergency stop button, 2 NC, Gold, Male quick connector / plug-in socket, reset by pulling, Mushroom head red



fields of application

- Measurement-control-regulation
- Mechanical and system engineering
- Signalling systems

special features

- Mounting hole diameter 16.2 mm
- Mounting depth behind the front panel only 30.7 mm with female quick connector
- Gold contacts for safe switching
- Reverse-polarity-secured terminal with 4-pole male quick connector and crimped ribbon cable
- Alternative: terminal with plug-in socket in PCB
- Water jet protection class IP 65 on front
- 2 normally closed contacts, gold (max. 25 V / 100 mA), positive-action



description

The LUMOTAST 25 emergency stop buttons have proven themselves over decades. The familiar connection concept makes the LUMOTAST 25 emergency stop pushbutton your reliable component. These emergency stop buttons offer protection class IP 65 according to DIN and are also equipped with gold contacts.

technical data

➤ general

Color of mushroom	red
Property of bezel / mushroom	opaque
Collar color	black
Collar shape	square
Operating temperature, min.	-25 °C
Storage temperature, min.	-40 °C
Operating temperature, max.	70 °C
Storage temperature, max.	80 °C
illuminated	No
Packaging	Box
Packaging unit	2 pcs.
net weight	9.5 g
Operating life	15,000 cycles
B10	19,500 cycles
B10d	39,000 cycles

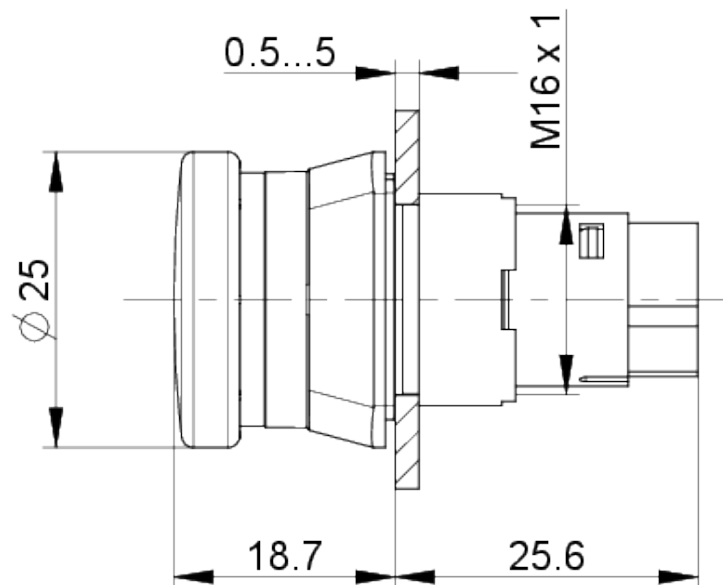
direct links

- [RAFI eCatalog](#)

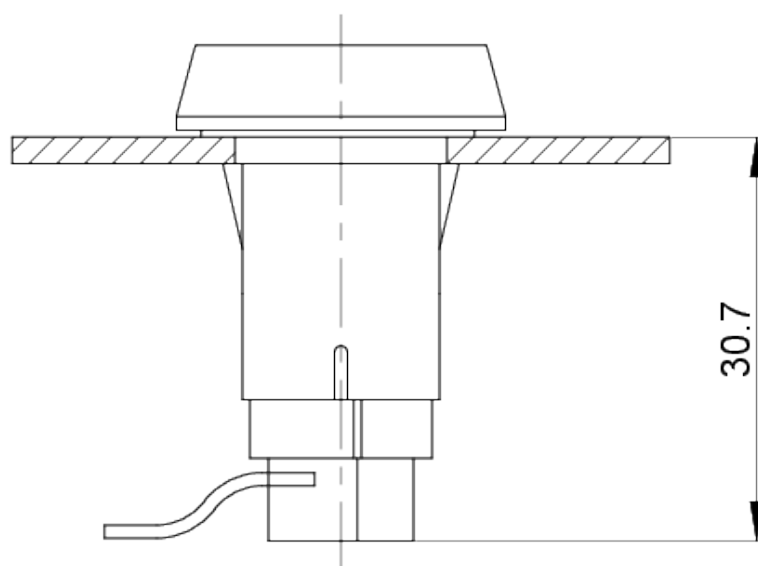
Degree of protection, front side, according to DIN EN 60529	IP65
MOQ order	10 pcs.
RoHS compliant	Yes
REACH compliant	Yes
> mounting diameters	
Mounting hole	16.2 mm
Mounting depth	30.7 mm
Installation height	18.5 mm
Outside dimension, length	25 mm
Outside dimension, width	25 mm
> mechanical data	
Actuation function	latching
Operating force, min.	1 N
Operating travel, max.	2.6 mm
Contact function	2 NC
Contact system	Snap-action contact
Contact material	Gold
Resetting	by pulling
Fixing	Threaded ring
Threaded ring torque, max.	0.8 Nm
Terminal on the rear	Male quick connector / plug-in socket
PIN 1	Normally closed contact 1
PIN 2	Normally closed contact 2
PIN 3	Normally closed contact 1
PIN 4	Normally closed contact 2
> electrical data	
Rated voltage, min.	0.02 V
Rated voltage, max.	25 V
Rated current, min.	0.0001 A
Rated current, max.	0.1 A

drawings

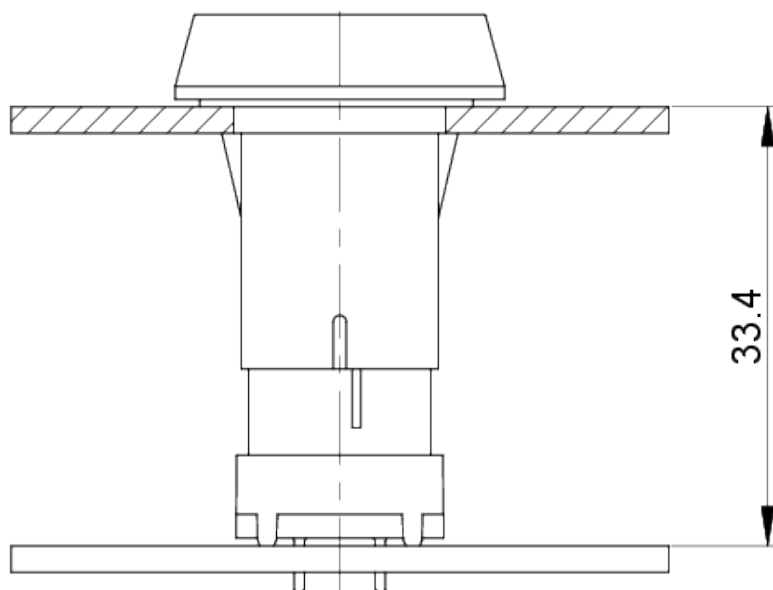
Dimensioned drawing



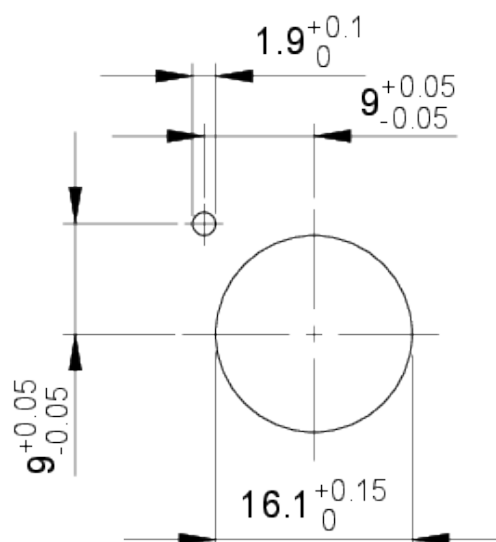
System drawing

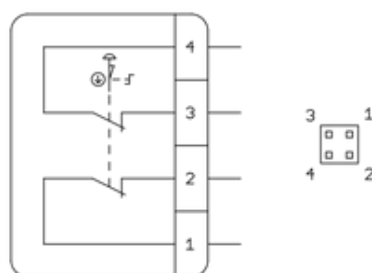


System drawing



Mounting hole drawing



Schematic diagram

**Mode d'emploi auxiliaires de commande
d'ARRÊT D'URGENCE (Traduction original)**