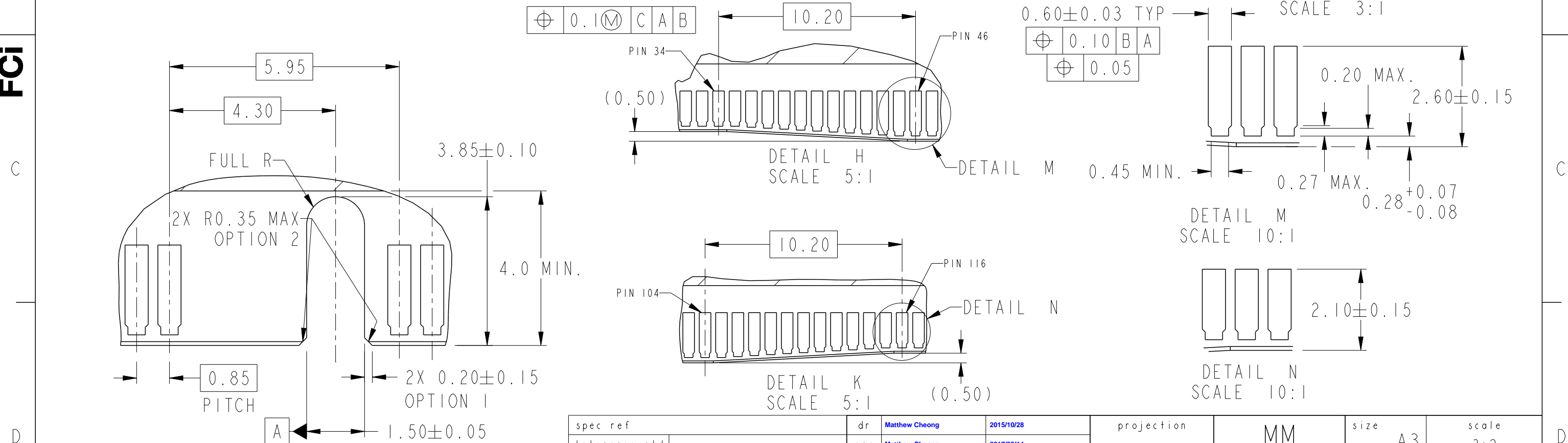
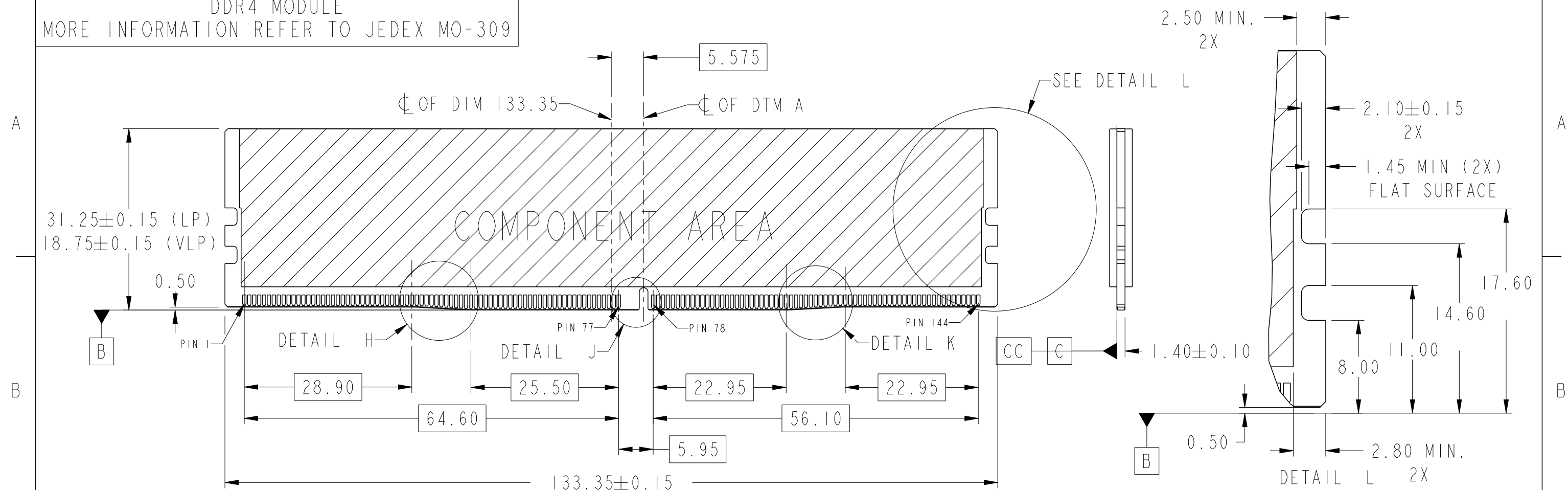
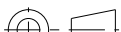
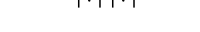



spec ref	dr	Matthew Cheong	2015/10/28	projection	MM	size	A3	scale	2:1
tolerance std	eng	Matthew Cheong	2017/08/14	chr	-	ecn no	ELX-S-24614-1	rel level	Released
	appr	Koon-Poh Tay	2017/12/21	product family	-	rel level	Released		
surface	linear	0.X	±0.30	Amphenol FCI	DDR4 288Pin DIMM CONNECTOR	dwg no	10137523	rev	B
		0.XX	±0.20	www.fci.com	PRESS FIT TERMINATION- CUST SP				
		0.XXX	±0.10						
ISO 1302	angular	0°	±2°						
				cat. no.	-	Product - Customer Drw	sheet 1 of 4		



spec ref				dr	Matthew Cheong	2015/10/28	projection		MM		size	A3	scale	3:2
tolerance std	TOLERANCES UNLESS OTHERWISE SPECIFIED			eng	Matthew Cheong	2017/08/14					ecn no	ELX-S-24614-1		
				chr	-	-								
				appr	Koon-Poh Tay	2017/12/21	product family			-	rel level Released			
surface -  ISO 1302	linear	0.X	±0.30	Amphenol FCI	title	DDR4 288Pin DIMM CONNECTOR PRESS FIT TERMINATION- CUST SP				dwg no	10137523		rev	B
		0.XX	±0.20											
		0.XXX	±0.10											
	angular	0°	±2°	www.fci.com	cat. no.	-	Product - Customer Drw					sheet 2 of 4		

Amphenol FCi

Downloaded from Arrow.com.



C

D

PRODUCT PART NUMBER



10137523-□□□□□LF

EON LENGTH, DIM "L"

2: L =1.85

HOUSING COLOR & POST HEIGHT, DIM "X"

0: NATURAL, DIM "X" = 2.60
3: NATURAL, DIM "X" = 4.30

CONTACT AREA PLATING

CONTACTS LUBRICATION

0: WITHOUT

CODE	CONTACT AREA	UNDERPLATING
1	15u" MIN.GOLD	50u" MIN.NICKEL
3	30u" MIN.GOLD	

EJECTOR TYPE

NOTES:

1. MATERIALS:
HOUSING: HIGH PERFROMANCE RESINS, GLASS FILBER FILLED, UL94 V-0 RATED.
EJECTOR: HIGH PERFORMANCE RESINS, GLASS FILBER FILLED, UL94 V-0 RATED.
TERMINAL: COPPER ALLOY
2. DATE CODE"MMDDYYL",MMDDYY IS ASSEMBLY DATE,
L IS FCI PRODUCTION SITE.
3. SPECIFICATION:
PRODUCTION SPECIFICATION: FCI GS-12-1092.
PACKAGE SPECIFICATION: FCI GS-14-2267.
APPLICATION SPECIFICATION: FCI GS-20-0353.
4. LEAD FREE PRODUCT MEETS EUROPEAN UNION DIRECTIVES AND OTHER COUNTRY
REGULATIONS AS DESCRIBED IN FCI GS-22-008.
5. A △ SYMBOL WILL BE NEXT TO ANY DIMENSION, VIEW, OR NOTE WHICH HAS BEEN
MODIFIED WITH THE CURRENT DRAWING REVISION.

CODE	COLOR	DIM "X1" MAX.EJECTORS OPEN DISTANCE	DIM "X2" MAX.EJECTORS CLOSE DISTANCE	DIM "W" EJECTOR WIDTH	EJECTOR TYPE	EJECTOR FIGURE
5	NATURAL	152.00	142.00	(6.42)	SOLID	
6	BLACK					

spec ref				dr	Matthew Cheong	2015/10/28	<div>projection</div> <div></div>	<div>MM</div> <div></div>	size	A3	scale	1:1			
tolerance std	TOLERANCES UNLESS OTHERWISE SPECIFIED			eng	Matthew Cheong	2017/08/14			ecn no				ELX-S-24614-1		
				chr	-	-			rel level				Released		
				appr	Koon-Poh Tay	2017/12/21			product family				-		
<div>surface -</div> <div></div> <div>ISO 1302</div>	linear	0.X	±0.30	Amphenol FCI	title	DDR4 288Pin DIMM CONNECTOR					dwg no	10137523		rev	B
		0.XX	±0.20												
		0.XXX	±0.10												
	angular	0°	±2°	www.fci.com	cat. no.	-	Product - Customer Drw					sheet 4 of 4			