

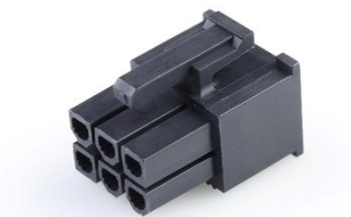
Part Number : [455590002](#)

Product Description : Mini-Fit Jr. Receptacle Housing, Dual Row, Custom for PCI Express High-end Graphics Add-In Card Applications Only

Series Number : 45559

Status : Active

Product Category : Connector Housings



Documents and Resources

Drawings

[455590002_sd.pdf](#)

[PK-5557-002-000.pdf](#)

3D Models and Design Files

[STEP AP242](#)

[SOLIDWORKS](#)

[Creo](#)

Specifications

[PS-45558-001-001.pdf](#)

[TS-5556-002-001.pdf](#)

Product Environment Compliance

Compliance

GADSL/IMDS	Not Relevant
China RoHS	per SJ/T 11365-2006
EU ELV	Not Relevant
Low-Halogen Status	Low-Halogen per IEC 61249-2-21
REACH SVHC	Not Contained per D(2025)7771-DC (04 Feb 2026)
EU RoHS	Compliant per EU 2015/863

Compliance Statements

- EU RoHS
- REACH SVHC
- Low-Halogen

Industry Documents

- IPC 1752A Class C
- IPC 1752A Class D
- Molex Product Compliance Declaration
- IEC-62474
- chemSHERPA (xml)

Substances of Interest

- PFAS

EU RoHS Certificate of Compliance

Additional Product Compliance Information

Part Details

General

Status	Active
Category	Connector Housings
Series	45559
Description	Mini-Fit Jr. Receptacle Housing, Dual Row, Custom for PCI Express High-end Graphics Add-In Card Applications Only
Application	Wire-to-Board, Wire-to-Wire
Component Type	Housing
Product Name	Mini-Fit Jr.
UPC	822348196876

Agency

CSA	LR19980
UL	E29179

Physical

Circuits (maximum)	6
Color - Resin	Black
Flammability	94V-0
Gender	Receptacle
Glow-Wire Capable	No
Keying to Mating Part	No
Lock to Mating Part	Yes

Material - Resin	Nylon
Net Weight	1.400/g
Number of Rows	2
Packaging Type	Bag
Panel Mount	No
Pitch - Mating Interface	4.20mm
Pitch - Termination Interface	4.20mm
Polarized to Mating Part	Yes
Stackable	No
Temperature Range - Operating	-40° to +105°C

Solder Process Data

Lead-Free Process Capability	N/A
------------------------------	-----

Mates With / Use With

Mates with Part(s)

Description	Part Number
Mini-Fit Jr. Header, Dual Row, Right-Angle, 6 Circuits, PA Polyamide Nylon 6/6 94V-0, Tin (Sn) Plating, without Drain Holes	<u>455580003</u>
Mini-Fit Jr. PCI Express*, High End Graphics Add-In Card Applications Only, 6 Circuits	<u>457180002</u>
Mini-Fit Jr. PCI Express, High End Graphics Add-In Card Applications Only, 6 Circuits, Bag	<u>457320001</u>

Use with Part(s)

Description	Part Number
Mini-Fit Female Crimp Terminals	<u>5556</u>

This document was generated on Jun 17, 2026