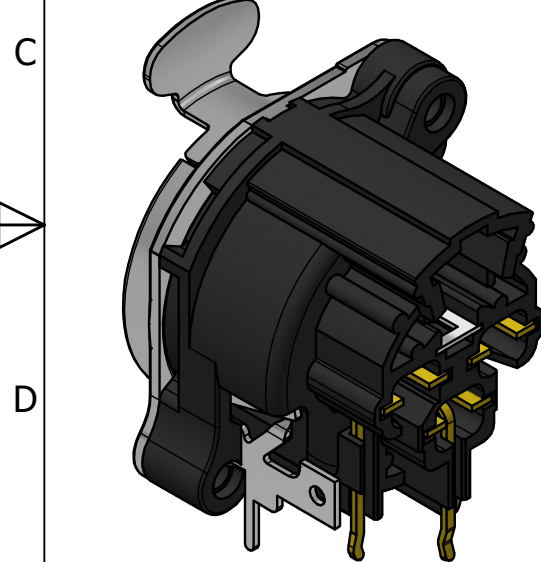
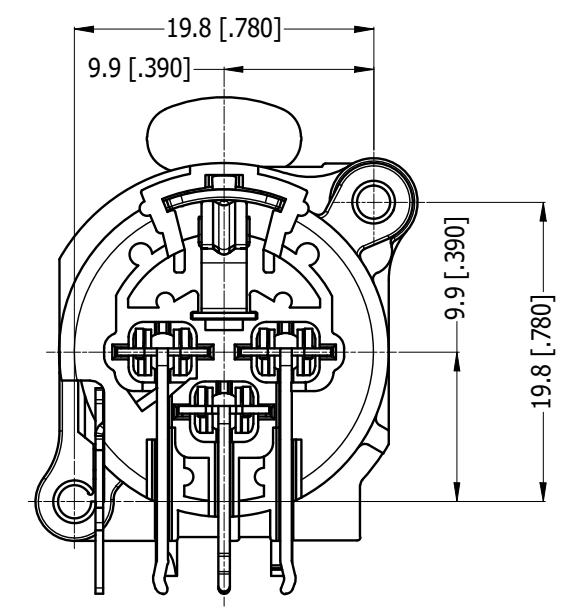
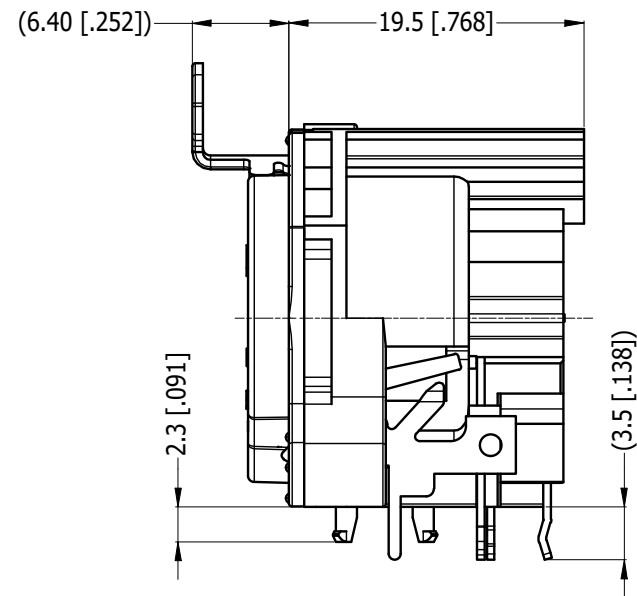
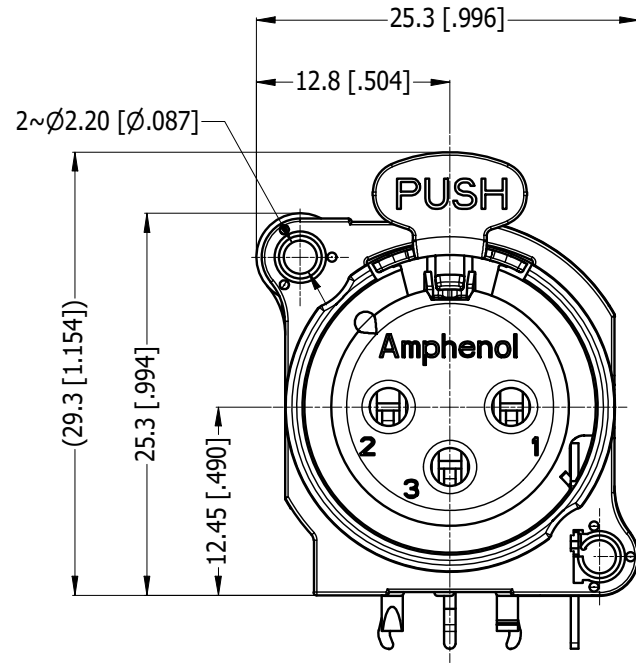
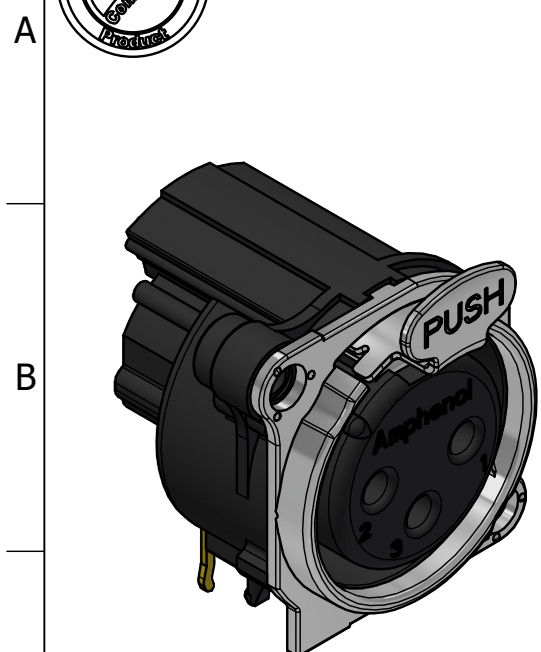


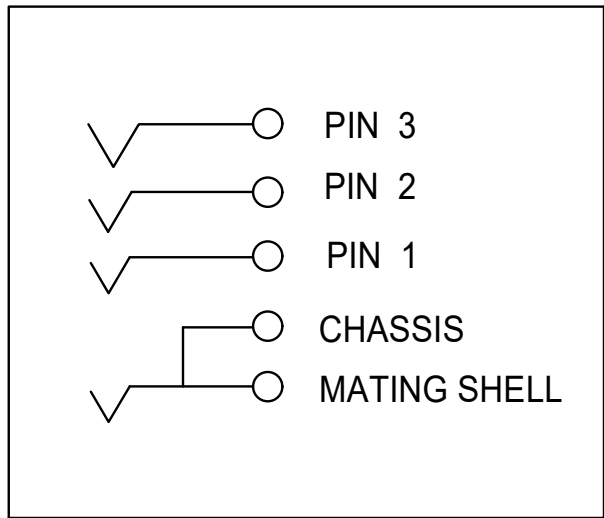
LEGEND = KEY PRODUCT CHARACTERISTICS

NOTE: DIMENSIONS IN (PARENTHESIS) ARE REF ONLY

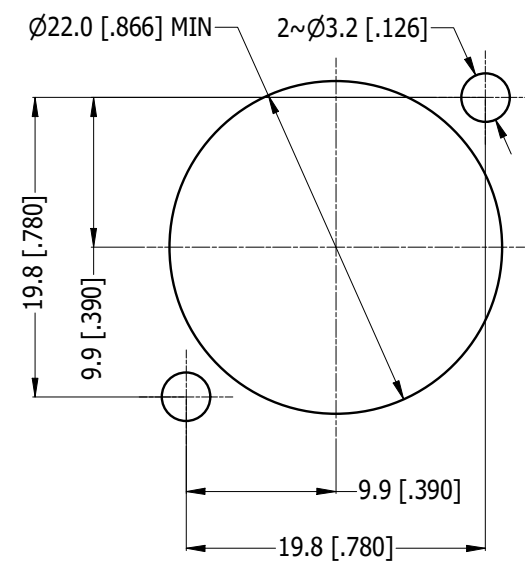
REV	DESCRIPTION	DATE	BY	CHG/No
0	FIRST ISSUE	21-12-17	MH	----
1	UPDATE PCB LEGS DIM TO 3.5MM	29-07-22	MH	----
2	UPDATE TO CURRENT PRODUCTION	17-06-25	MH	9767



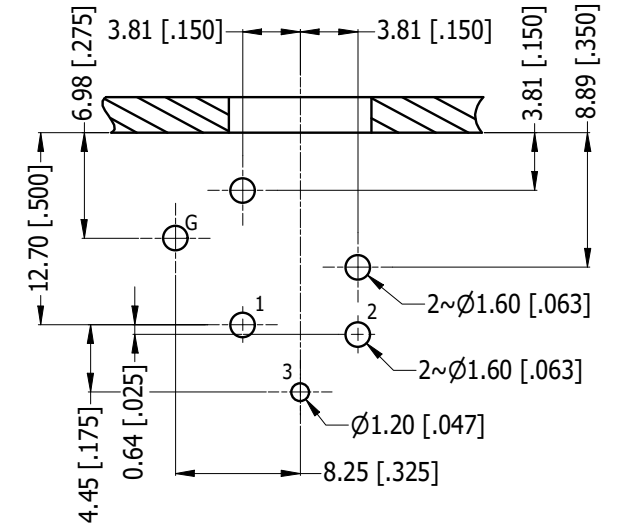
ISO VIEW



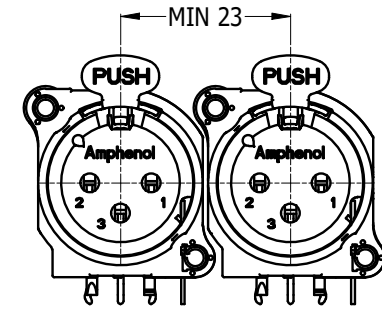
SCHEMATIC CHART



PANEL CUT OUT REAR VIEW



PCB-LAYOUT COMPONENT SIDE TOLERANCE: ±0.05mm [.002"]



MIN MOUNTING PITCH SCALE 1:1

PART NUMBER TABLE	
PART NUMBER	METAL FLANGE FINISH
AC3FBH2-AU-PRE	SATIN NICKEL
AC3FBHB2-AU-PRE	MATT BLACK

UNLESS OTHERWISE SPECIFIED TOLERANCE TO BE		THIS DOCUMENT IS THE PROPERTY OF AMPHENOL AUSTRALIA PTY. LTD. NO PART THEREOF MAY BE REPRODUCED AND USED WITHOUT THE PRIOR WRITTEN CONSENT OF THE OWNER		Amphenol Australia Pty.Ltd. 22 Industry Blvd, Carrum Downs, VIC 3201	
LINEAR	ANGULAR	MATERIAL: REFER TO COMPONENT	DRN: MH	DATE: 21-12-17	TITLE: AC3FBH2-AU-PRE HORIZONTAL FEMALE CUSTOMER DRAWING
X ±0.5	X' ±1	BREAK ALL SHARP EDGES AND REMOVE ALL BURRS	CKD: MH	DATE: 29-07-22	PART No: AC3FBH2-AU-PRE
X.X ±0.2	X.X' ±30'	DO NOT SCALE	APP'D: PM	DATE: 29-07-22	DRAWING NO. 55011280-000-2
X.XX ±0.1	X.XX' ±15'	DIMENSIONS IN MILLIMETRES	SCALE: 2:1	SIZE: A3	SHEET 2/3