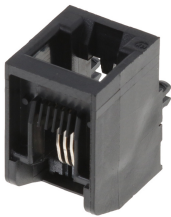




Part Number : [950092647](#)
Product Description : Modular Jack, Right-Angle, Through Hole, 6/4
Series Number : 95009
Status : Active
Product Category : Modular Jacks and Plugs




Documents & Resources

Drawings
[950092647_sd.pdf](#)
[PK-95029-001.pdf](#)

3D Models and Design Files
[950092647_stp.zip](#)

Product Environment Compliance

Compliance

GADSL/IMDS	Not Relevant
China RoHS	
EU ELV	Not Relevant
Low-Halogen Status	Not Low-Halogen per IEC 61249-2-21
REACH SVHC	Not Contained per D(2020)4578-DC (25 June 2020)
EU RoHS	Compliant per EU 2015/863

Multiple Part Product Compliance Statements

- Eu RoHS
- REACH SVHC
- Low-Halogen

Multiple Part Industry Compliance Documents

- IPC 1752A Class C
- IPC 1752A Class D
- Molex Product Compliance Declaration
- IEC-62474
- chemSHERPA (xml)

Part Details

General

Status	Active
Category	Modular Jacks and Plugs
Series	95009
Description	Modular Jack, Right-Angle, Through Hole, 6/4
Comments	Flangeless
Component Type	PCB Jack
Magnetic	No
Performance Category	3
Power over Ethernet (PoE)	N/A
Product Name	Modular Jack 6/4
UPC	800753866034

Agency

UL	E107635
----	---------

Electrical

Current - Maximum per Contact	1.5A
Shielded	No
Voltage - Maximum	125V DC

Physical

Boot Color	N/A
Color - Resin	Black
Durability (mating cycles max)	2500
Flammability	94V-0
Inverted / Top Latch	No
Jack Height	16.00mm
Lightpipes/LEDs	None
Material - Metal	Copper Alloy
Material - Plating Mating	Gold over Palladium Nickel

Material - Plating Termination	Tin
Material - Resin	High Temperature Thermoplastic
Net Weight	2.110/g
Orientation	Right Angle (Side Entry)
Packaging Type	Tray
Panel Mount	Without Flange
PCB Locator	Yes
PCB Retention	Yes
PCB Thickness - Recommended	1.57mm
Pitch - Mating Interface	1.02mm
Pitch - Termination Interface	1.27mm
Plating min - Mating	1.270µm
Plating min - Termination	1.905µm
Port Configuration	1x1
Positions / Loaded Contacts	6/4
Temperature Range - Operating	-40° to +80°C
Termination Interface Style	Through Hole
Waterproof / Dustproof	No
Wire/Cable Type	N/A

Mates With / Use With

Mates with Part(s)

Description	Part Number
Mates With	FCC 68 Plugs

This document was generated on Nov 09, 2024