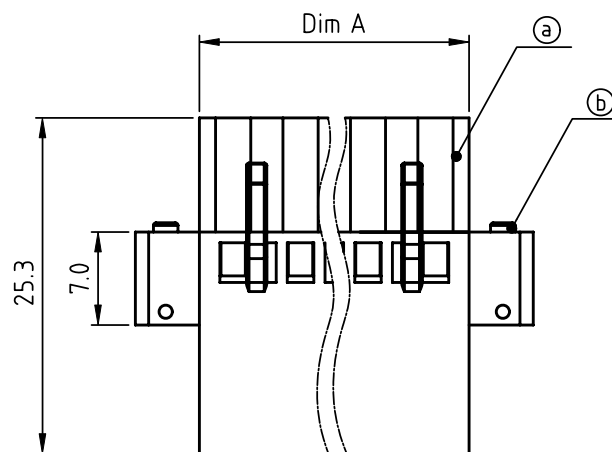
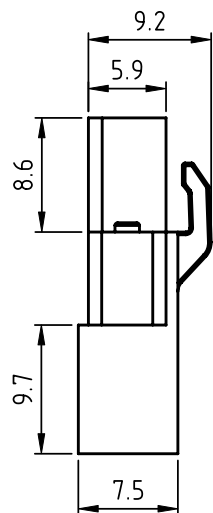
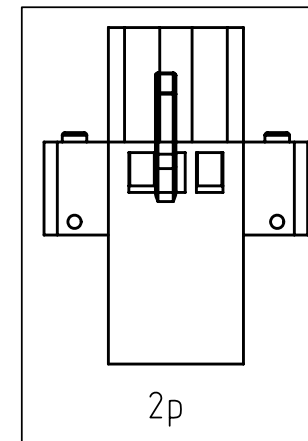
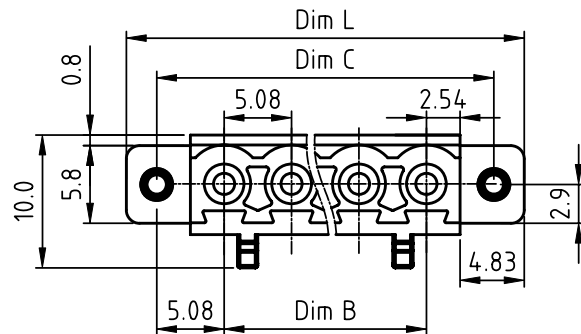


PRODUCT NUMBER	PITCH
Klxx50x200J0G	5.08 mm



## Material:

- Item (a) Terminal housing: Thermoplastic (UL94 V-0)
- Item (b) With flange screw: Steel Zinc plated, M2.5"/+/-"

## Electrical cULus

- Voltage rating: 300V
- Current rating: 10A
- Wire range: 0.5-1.0mm<sup>2</sup>/1.5-2.5mm<sup>2</sup>
- Withstanding Voltage: 1.6KV
- Corresponding female crimp contacts: A0 5.08 series

N = Number of poles  
 Dim L = (N-1) × 5.08 + 14.74  
 Dim A = N × 5.08  
 Dim B = (N-1) × 5.08  
 Dim C = (N-1) × 5.08 + 10.16

PART NO.: **KI xx 50 x 2 00J0 G**

Solid block	No. of poles	Color	RoHS compliant (lead<4%) In copper Alloy
02 2 poles	3	Black (RAL9005)	
03 3 poles	4	Red (RAL3001/D)	
...	5	Orange (RAL2011/P)	
...	6	Yellow (RAL1018/A)	
24 24 poles	8	Green (RAL6018/T)	
	9	Blue (RAL5015/A)	
	10	Grey (RAL7035/D)	
	11	White (RAL1102)	
	12	Green (RAL6018/U)	

Poles	Dim L	Dim A	Dim B	Dim C
2-6p	±0.20	±0.20	±0.20	±0.20
7-12p	±0.25	±0.25	±0.25	±0.25
13-16p	±0.30	±0.30	±0.30	±0.30
17-24p	±0.40	±0.40	±0.35	±0.40

mat'l. code				surface ASME Y14.5 ✓	tolerance ASME Y14.5	projection	product family	
ltr	ecn	no	dr	date	tolerances unless otherwise specified	MM	TERMINAL BLOCK	
					angles X.±0.5		title	
					dr EVIN ZHONG 050414		TERMINAL BLOCK	
					enr EVIN ZHONG 050414		PLUGGABLE PLUG, WITH FLANGE, CRIMP CONNECTION	
					chr HANKE FENG 050414		dwg no	
					appd SHI JUN 050414		sheet 1 of 1 size	
							Klxx50x200J0G	
							A4	
							type	
							CUSTOMER Drawing	
sheet index	revision	A						
	sheet	1						