

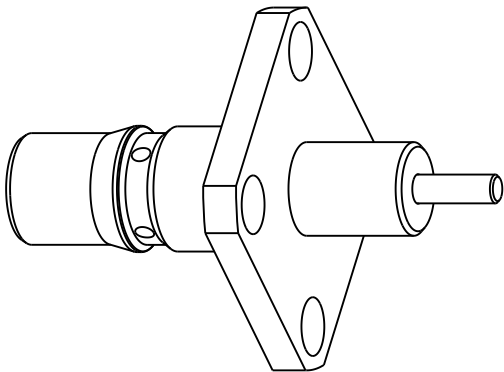
NOTES:

1. MATERIALS AND FINISHES:
BODY - BRASS, ALBALOY PLATING
CONTACT - BERYLLIUM COPPER, GOLD PLATING
INSULATORS - PTFE, NATURAL
2. ELECTRICAL:
A. IMPEDANCE: 50 OHM
B. FREQUENCY RANGE: DC - 6 GHz
C. VSWR(RETURN LOSS): -32 dB TO 3 GHz MAX.
-25 dB TO 6 GHz MAX.
D. DIELECTRIC WITHSTANDING VOLTAGE: 1000 VRMS, MIN.
3. MECHANICAL:
A. DURABILITY: 100 CYCLES MIN.
B. TEMPERATURE RANGE: -40° C TO 80° C
4. CONTACT PIN MUST WITHSTAND A 6 LBS. AXIAL FORCE AND A 4 IN-OZ. MIN TORQUE

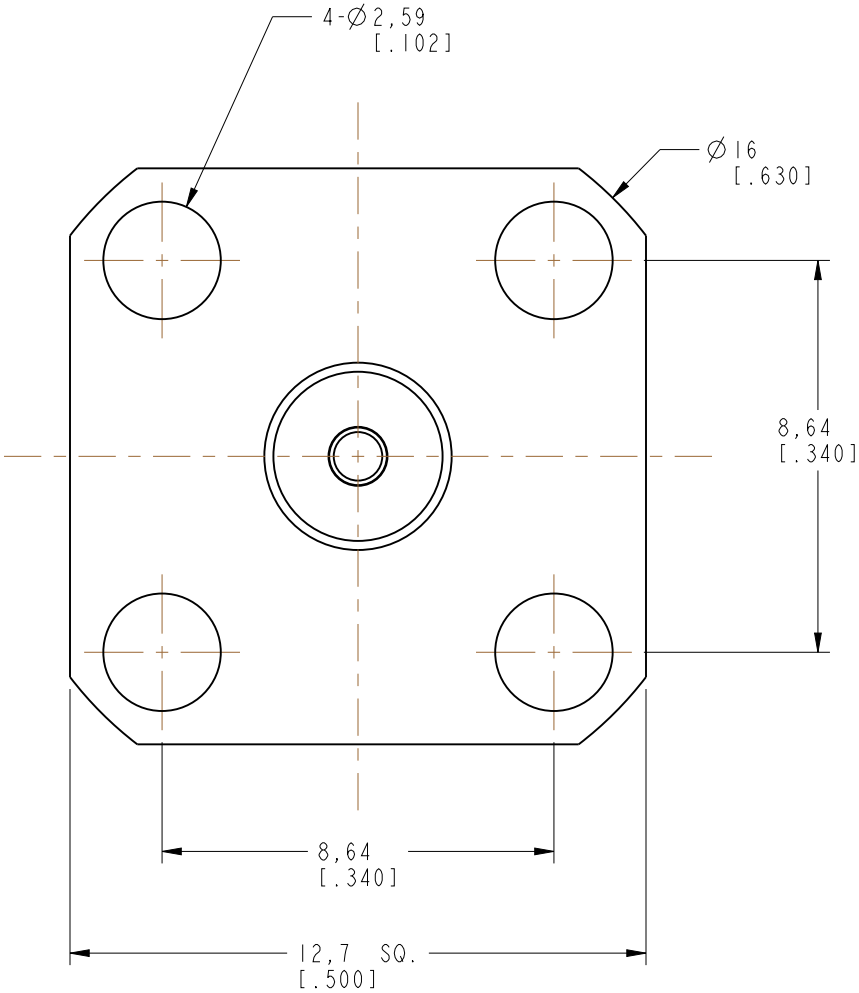
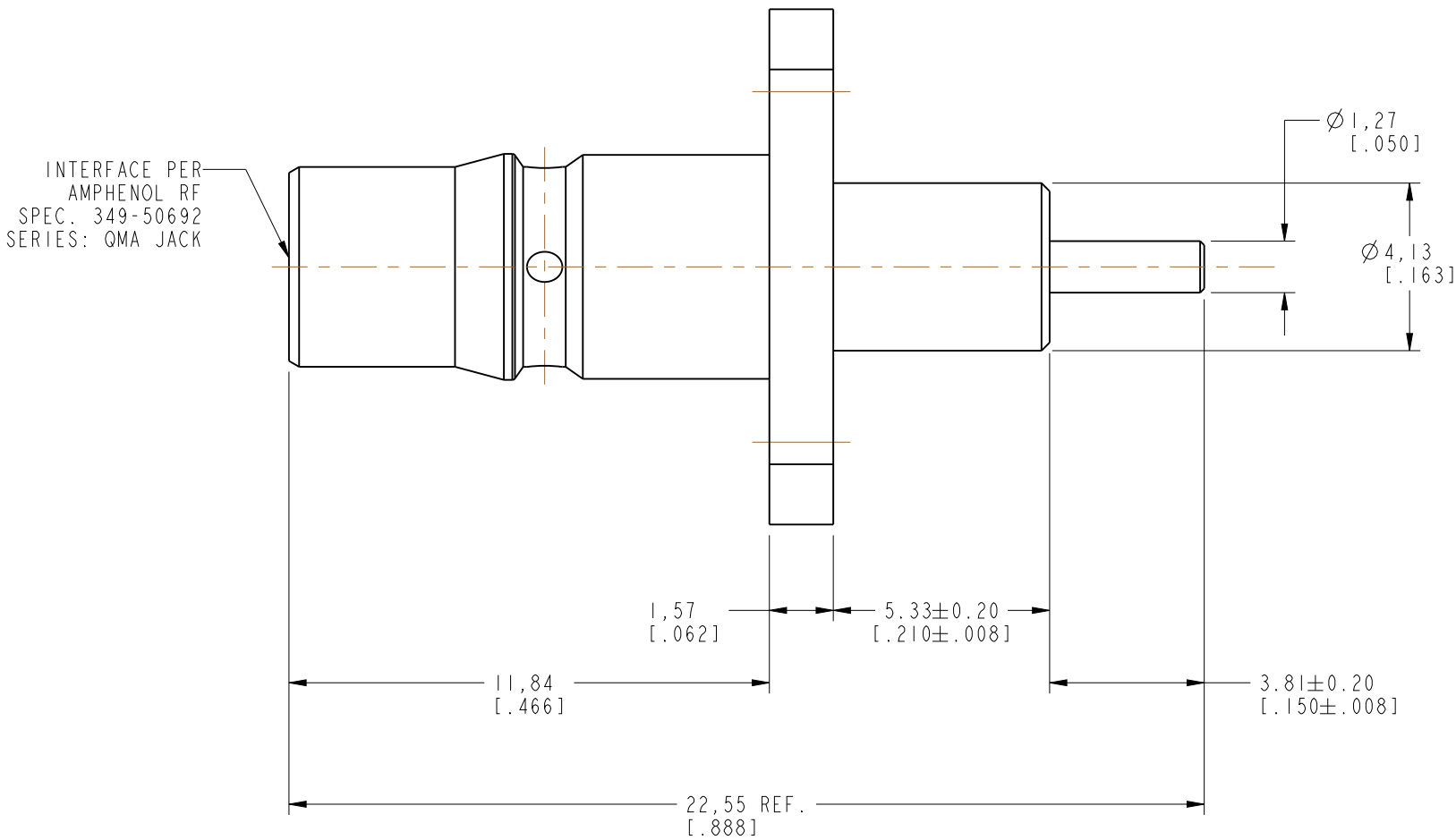
THIRD ANGLE PROJ.

REVISIONS

REV	DESCRIPTION	DATE	ECN	APPR
A	RELEASE TO MFG.	18-Feb-19	10724	CJV



SCALE 3.000



CUSTOMER OUTLINE DRAWING

ALL OTHER SHEETS ARE FOR INTERNAL USE ONLY

UNLESS OTHERWISE SPECIFIED, DIMENSIONS ARE IN METRIC AND TOLERANCES ARE: <0.5mm ± 0.05mm 0.5 - 6mm ± 0.1mm 6 - 30mm ± 0.2mm 30 - 120mm ± 0.3mm ANGLES ±1°	MATERIAL	DRAWN	DATE	TITLE		Amphenol RF www.amphenolrf.com	
	-	M. ZHANG	18-Feb-19				
	REFERENCE	ENGINEER	DATE	QMA(F) PANEL RECEPT. EXTENDED TEFLON/CONTACT (.210" / .150")		DRAWING NO. QMA6551A1-014-AT30GM-50	
	EAR#	S. DUAN	18-Feb-19			ITEM NO. 706551ABD02RB5F	
	REF: 930-112J-51S	APPROVED	DATE	SCALE: 6.0:1.0 SHEET 2 OF 2		PART NO. 134103	
NOTICE - These drawings, specifications, or other data (1) are, and remain the property of Amphenol corp. (2) must be returned upon request; and (3) are confidential and not to be disclosed to any person other than those to whom they are given by Amphenol Corp. the furnishing of these drawings, specifications, or other data by Amphenol Corp., or to any other person to anyone for any purpose is not to be regarded by implication or otherwise in any manner licensing, granting rights to permitting such holder or any other person to manufacture, use or sell any product, process or design, patented or otherwise, that may in any way be related to or disclosed by said drawings, specifications, or other data.	CONFIGURATION LEVEL: In Work	S. HSIEH		18-Feb-19			
	FINISH	CAD FILE		DWG SIZE B		REV A	