



Part Number : [398800402](#)

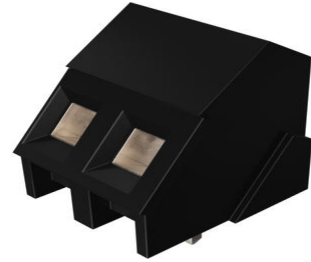
Product Description : 5.08mm Pitch Beau Eurostyle
Low Profile, Fixed Block, 35° Wire Entry, Modular, 2
Circuits

Series Number : 39880

Status : Active

Product Category : Terminal Blocks and Barrier
Strip

Engineering Part Number : MX-MSM02045-0N



Documents and Resources

Drawings

[398800402_sd.pdf](#)

3D Models and Design Files

[STEP AP242](#)


[SOLIDWORKS](#)

[Creo](#)

[Symbol and Footprint \(Multi-Format\)](#)

Product Environment Compliance

Compliance

GADSL/IMDS	Compliant with Exemption 3; 33
China RoHS	 per SJ/T 11365-2006
EU ELV	Not Relevant
Low-Halogen Status	Low-Halogen per IEC 61249-2-21
REACH SVHC	Contains Lead per D(2025)7771-DC (04 Feb 2026) SCIP:f0164dcc-52d4-4848-8933-93ef496cf85c
EU RoHS	Compliant with Exemption 6(c) per EU 2015/863

[Compliance Statements](#)

- EU RoHS
- REACH SVHC
- Low-Halogen

Industry Documents

- IPC 1752A Class C
- IPC 1752A Class D
- Molex Product Compliance Declaration
- IEC-62474
- chemSHERPA (xml)

Substances of Interest

- PFAS

EU RoHS Certificate of Compliance

Additional Product Compliance Information

Part Details

General

Status	Active
Category	Terminal Blocks and Barrier Strip
Series	39880
Description	5.08mm Pitch Beau Eurostyle Low Profile, Fixed Block, 35° Wire Entry, Modular, 2 Circuits
Application	Wire-to-Board
Component Type	One Piece
Product Name	Eurostyle Fixed Mount
Type	PCB Terminal Blocks and Connectors
UPC	800753319035

Agency

UL	E48521
----	--------

Electrical

Current - Maximum per Contact	17.5A
Voltage - Maximum	300V

Physical

Circuits (Loaded)	2
Circuits (maximum)	2
Color - Resin	Black
Entry Angle	35° Angle
Flammability	94V-0
Lock to Mating Part	No
Net Weight	3.120/g
Number of Rows	1
Orientation	Vertical
Panel Mount	No
PCB Retention	No
PCB Thickness - Recommended	2.60mm
PC Tail Length	3.80mm
Pitch - Mating Interface	5.08mm
Pitch - Termination Interface	5.08mm
Polarized to Mating Part	N/A
Shrouded	Fully
Stackable	Yes
Temperature Range - Operating	105°C
Wire Size (AWG)	12, 14, 16, 18, 20, 22, 24, 26, 28, 30
Wire Size mm ²	0.05-2.50

This document was generated on Apr 15, 2026