

4.20[.165]

1.95[.077]

Common terminal

A

4.20[.165]

3.60[.142]

ALCO

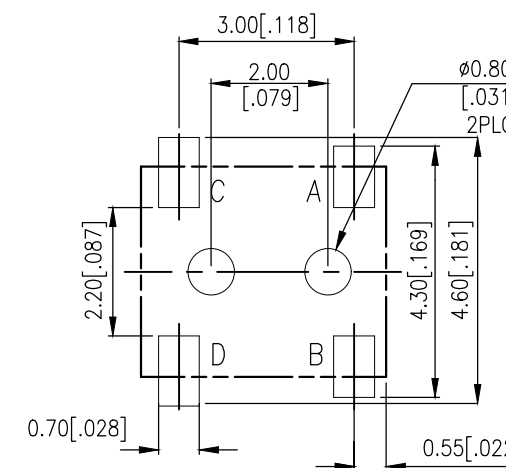
1.20[.047]

B

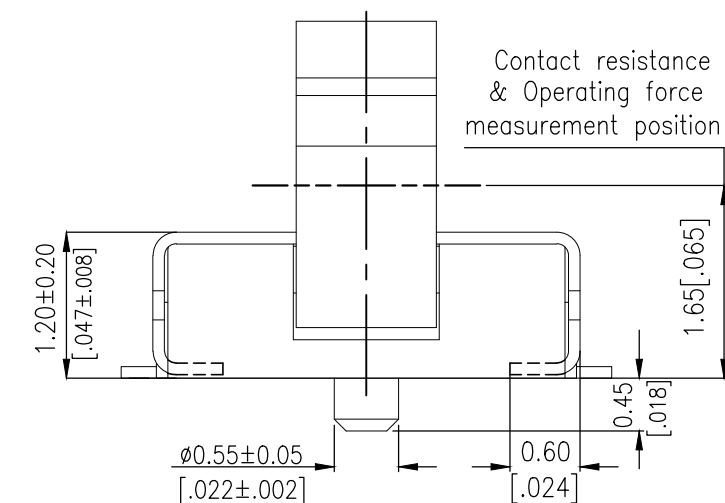
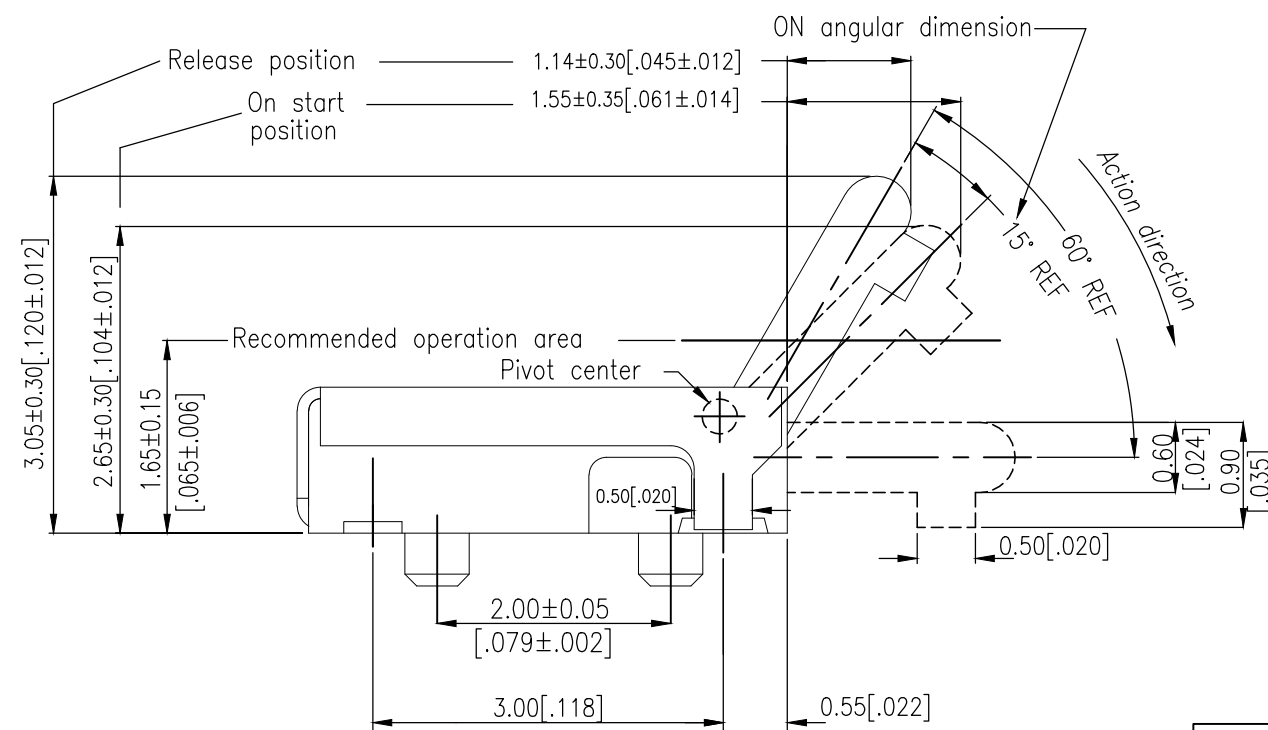
0.50[.020]


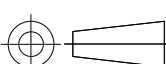
Separate terminal

D



CIRCUIT DIAGRAM



THIS DRAWING IS A CONTROLLED DOCUMENT.		DWN 07MAR2018 GANESH C M		<div>TE Connectivity Ltd.</div>							
		CHK 07MAR2018 ALEXANDER SHARPE									
DIMENSIONS: mm [INCHES]		TOLERANCES UNLESS OTHERWISE SPECIFIED: 0 PLC ± - 1 PLC ± - 2 PLC ± 0.20 [.008] 3 PLC ± - 4 PLC ± - ANGLES ± -		APVD 07MAR2018 ALEXANDER SHARPE		NAME					
				PRODUCT SPEC —		SWITCH, DETECTOR, JJD SERIES, 4.2X3.6mm VER ACTUATION, DOWN, SMT,POSTS FLAT TERM					
				APPLICATION SPEC —							
MATERIAL —		FINISH —		WEIGHT		SIZE	CAGE CODE	DRAWING NO	RESTRICTED TO		
						A3	00779	C-2331412	—		
CUSTOMER DRAWING						SCALE	NTS	SHEET	1 OF 3	REV	A

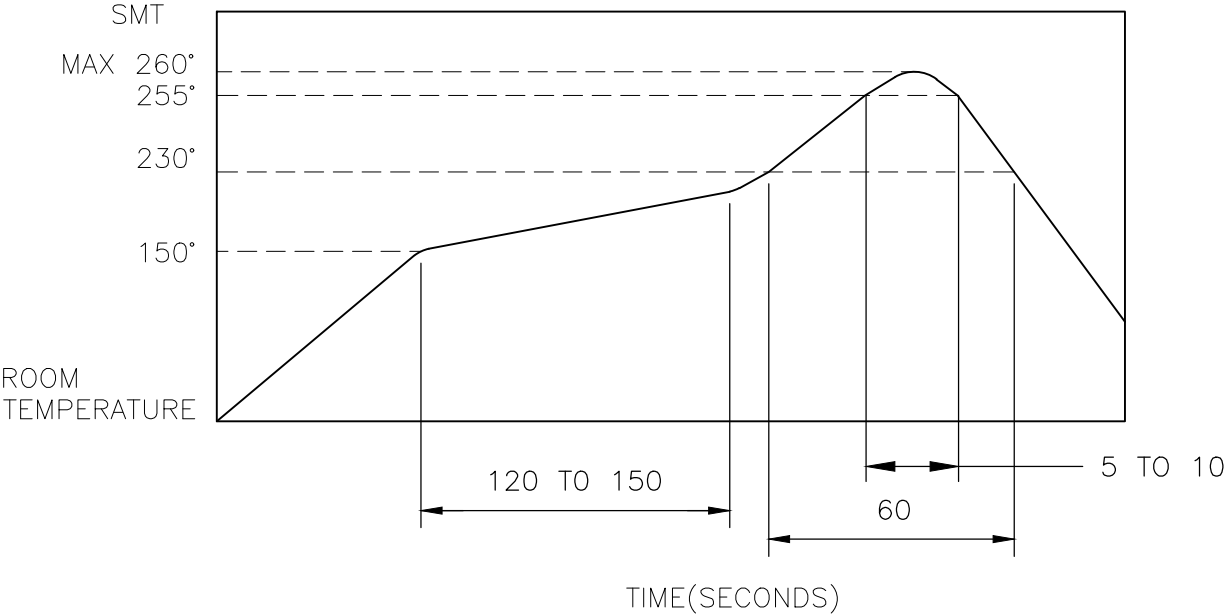
THIS DRAWING IS UNPUBLISHED.	RELEASED FOR PUBLICATION
© COPYRIGHT - TE Connectivity Ltd.	ALL RIGHTS RESERVED.

REVISIONS					
P	LTR	DESCRIPTION	DATE	DWN	APVD
	-	SEE SHEET 1	-	-	-

NOTES:

1. MATERIALS
ACTUATOR: THERMOPLASTIC, UL 94V-0, BLACK
BODY: THERMOPLASTIC, UL 94V-0, BLACK
COVER: NICKEL SILVER
TERMINAL: COPPER ALLOY, SILVER PLATE
CONTACT: COPPER ALLOY, GOLD PLATE
SILICONE: SILICONE, BLACK
STEM: THERMOPLASTIC, UL94V-0, BLACK
2. COMPLIANCE:
ALL MATERIALS AND FINISHES SHALL COMPLY WITH EU
DIRECTIVE 2002/95/EC OF 27JAN2003(RoHS)
3. SPECIFICATIONS:
RATING: DC 3V, 50 mA TO DC 5V, 10mA
CONTACT RESISTANCE: 1Ω MAXIMUM (INITIAL)
INSULATION RESISTANCE: 100MΩ MINIMUM AT 100 V DC
DIELECTRIC STRENGTH: 100 V AC, 1 MINUTE
OPERATING LIFE: 50,000 CYCLES WITH LOAD
TOTAL TRAVEL: 60°
ACTUATION FORCE: 40gf MAXIMUM
OPERATING TEMPERATURE: -10°C TO 60° C
STORAGE TEMPERATURE: -20°C TO 70° C

4. SOLDER CONDITIONS:



THE CONDITION MENTIONED ABOVE IS THE TEMPERATURE ON THE CU FOIL OF THE PCB SURFACE. THERE ARE CASES WHERE THE BOARD'S TEMPERATURE GREATLY DIFFERS FROM THE SWITCH'S SURFACE. DO NOT ALLOW SWITCH'S SURFACE TEMPERATURE TO EXCEED 260°C


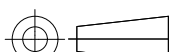
MANUAL SOLDERING

SOLDERING TEMPERATURE	MAX.350°C.
CONTINUOUS SOLDERING TIME	MAX. 5 SECONDS.

PRECAUTIONS IN HANDLING

1. CARE SHOULD BE EXERCISED SO THAT FLUX FROM THE UPPER PART OF THE PRINTED CIRCUIT BOARD DOES NOT ADHERE TO THE SWITCH.

JJDVDUG305NOPMRQTR	2331412-1
SMART PART NUMBER	PART NUMBER

THIS DRAWING IS A CONTROLLED DOCUMENT.		DWN GANESH C M 07MAR2018	 TE Connectivity Ltd.				
		CHK ALEXANDER SHARPE 07MAR2018	NAME SWITCH, DETECTOR, JJD SERIES, 4.2X3.6mm VER ACTUATION, DOWN, SMT,POSTS FLAT TERM				
DIMENSIONS: mm [INCHES]	TOLERANCES UNLESS OTHERWISE SPECIFIED:	APVD ALEXANDER SHARPE 07MAR2018					
	0 PLC ± - 1 PLC ± - 2 PLC ± 0.20 [.008] 3 PLC ± - 4 PLC ± - ANGLES ± -	PRODUCT SPEC —					
		APPLICATION SPEC —					
MATERIAL —	FINISH —	WEIGHT	SIZE A3	CAGE CODE 00779	DRAWING NO C-2331412	RESTRICTED TO —	
CUSTOMER DRAWING					SCALE NTS	SHEET 2 of 3	REV A

THIS DRAWING IS UNPUBLISHED.

RELEASED FOR PUBLICATION

© COPYRIGHT — TE Connectivity Ltd.

ALL RIGHTS RESERVED.

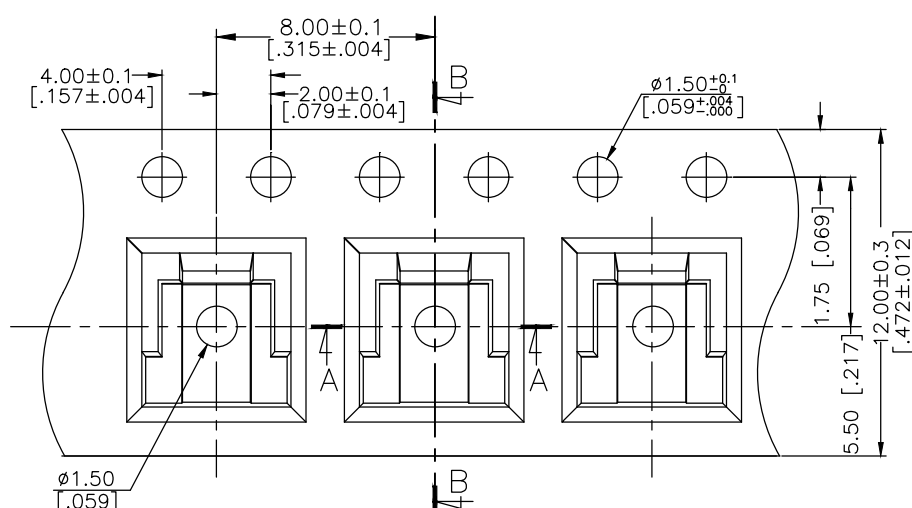
REVISIONS

P	LTR	DESCRIPTION	DATE	DWN	APVD
	—	SEE SHEET 1	—	—	—

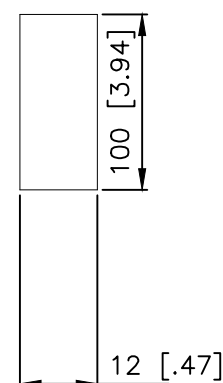
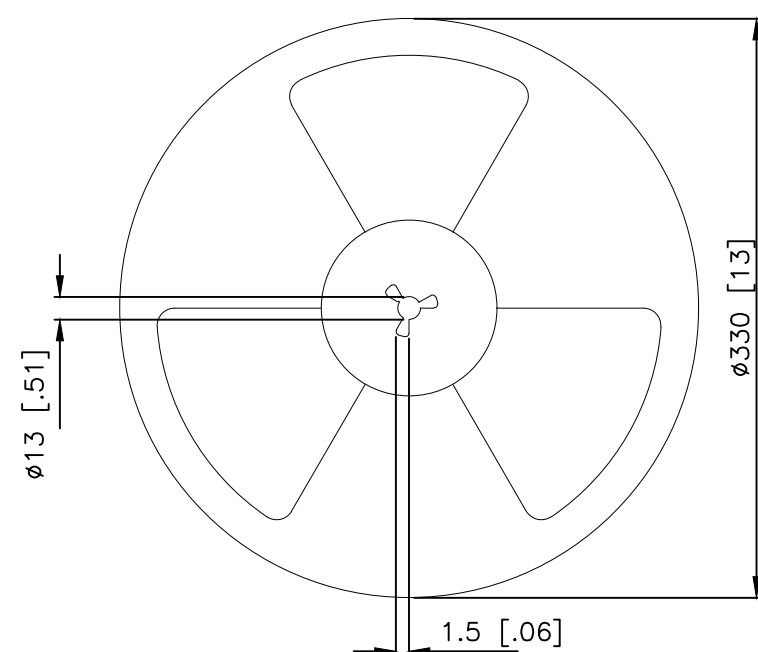
PACKAGING:

2000 SWITCHES PER REEL

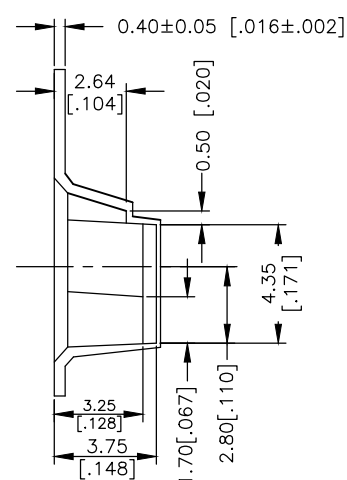
THE DIMENSION OF CARRIER TAPE, COVER TAPE AND REEL



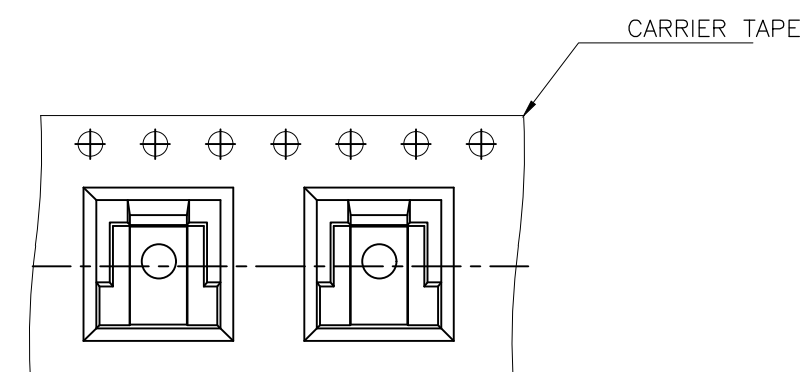
Section A—A



THE DIRECTION OF PILOT HOLES




Section B—B



DRAWING DIRECTION

REEL

THIS DRAWING IS A CONTROLLED DOCUMENT.		DWN GANESH C M 07MAR2018	 TE Connectivity Ltd.		
		CHK ALEXANDER SHARPE 07MAR2018			
DIMENSIONS: mm [INCHES]		APVD ALEXANDER SHARPE 07MAR2018	NAME SWITCH, DETECTOR, JJD SERIES, 4.2X3.6mm VER ACTUATION, DOWN, SMT, POSTS FLAT TERM		
		PRODUCT SPEC			
		APPLICATION SPEC			
MATERIAL		WEIGHT	SIZE A3	CAGE CODE 00779	DRAWING NO C-2331412
		FINISH	RESTRICTED TO —		
			CUSTOMER DRAWING		
			SCALE NTS	SHEET 3 OF 3	REV A