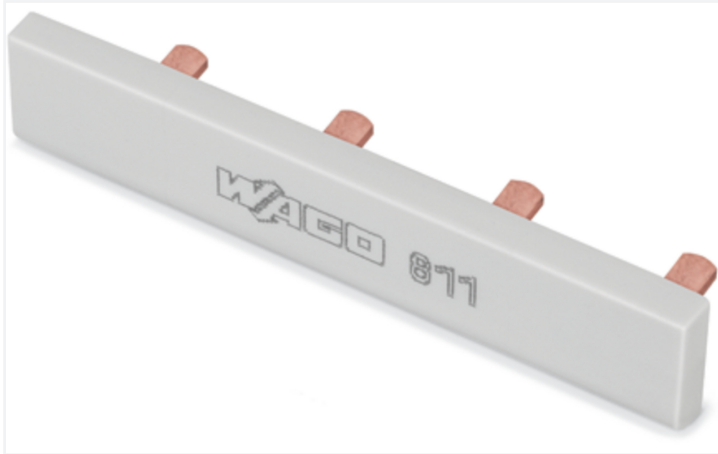


## Data Sheet | Item Number: 811-481

Jumper; 11-way; insulated; light gray

<https://www.wago.com/811-481>



Color: ■ light gray

Similar to illustration

### Electrical data

#### Ratings per IEC/EN

Nominal voltage (III/3)	1000 V
Rated current	63 A

### Material data

Note (material data)	<a href="#">Information on material specifications can be found here</a>
Color	light gray
Weight	50 g

### Commercial data

PU (SPU)	20 (10) pcs
Packaging type	Box
Country of origin	DE
GTIN	4050821838630
Customs tariff number	85366990990

### Product Classification

UNSPSC	39121421
eCl@ss 10.0	27-14-11-33
eCl@ss 9.0	27-14-11-40
ETIM 9.0	EC000489
ETIM 10.0	EC000489
ECCN	NO US CLASSIFICATION

**Environmental Product Compliance**

RoHS Compliance Status	Compliant, No Exemption
------------------------	-------------------------

**Downloads**

**Environmental Product Compliance**

<b>Compliance Search</b>	
Environmental Product Compliance 811-481	↓

**Documentation**

<b>Bid Text</b>			
811-481	19.02.2019	xml 2.52 KB	↓
811-481	28.04.2017	doc 23.00 KB	↓

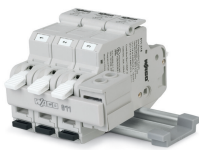
**CAD/CAE-Data**

<b>CAD data</b>	
2D/3D Models 811-481	↓

<b>CAE data</b>	
EPLAN Data Portal 811-481	↓
WSCAD Universe 811-481	↓
ZUKEN Portal 811-481	↓

**Installation Notes**

**Commoning**



Jumper bar for quick and convenient commoning

Subject to changes. Please also observe the further product documentation!

Current addresses can be found at: [www.wago.com](http://www.wago.com)