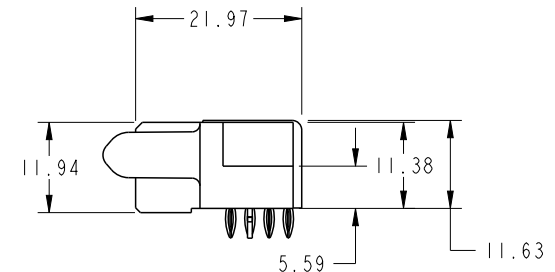
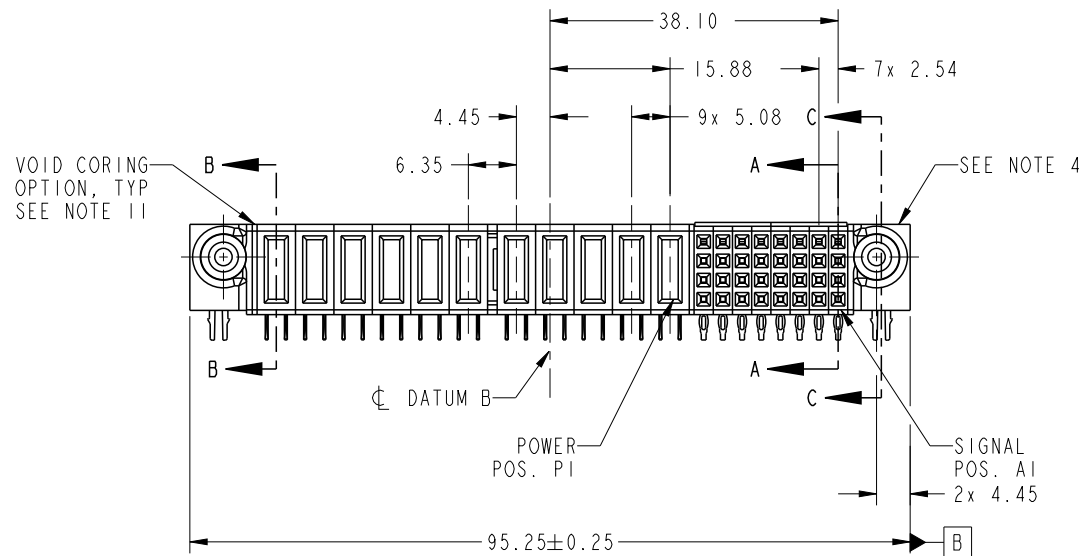




Copyright FCI.

PRODUCT NO.	ROW S	POWER											SIGNAL								E1	
		E2	P11	P10	P9	P8	P7	P6	P5	P4	P3	P2	P1	8	7	6	5	4	3	2		1
51915-491-- NOTE 3	D C B A		PE	PF	PF	PF	PF	PF	PE	PE	PE	PE	PE	S	S	S	S	S	S	S	S	
														R	R	R	R	R	R	R	R	
														P	P	P	P	P	P	P	P	
														N	N	N	N	N	N	N	N	



CODE	DIM "M" MATING LENGTH	CONTACT TYPE
PE	[1.07]	POWER
PF	[2.34]	POWER
S	[N/A]	SIGNAL
R	[N/A]	SIGNAL
P	[N/A]	SIGNAL
N	[N/A]	SIGNAL
HA	[N/A]	HOLD-DOWN

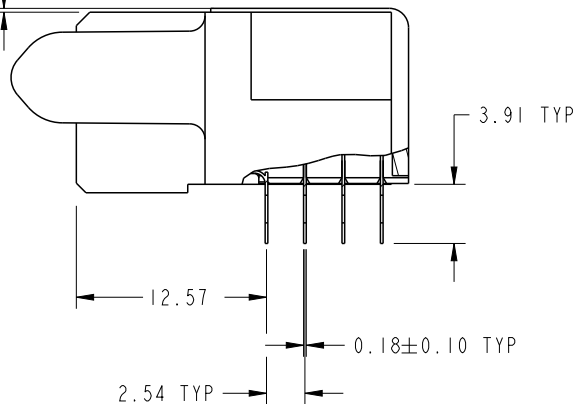
spec ref		SEE NOTES			dr		Luo Weller		2015/04/15		<div>projection</div> <div></div>	<div>MM</div> <div></div>	size		A4		scale		1:1							
tolerance std		TOLERANCES UNLESS OTHERWISE SPECIFIED			eng		Luo Weller		2015/05/05				ecn no						-							
SEE NOTES					chr		-		-																	
					appr		Pei-Ming Zheng		2015/05/05				product family						PwrBlade		rel level		Released			
surface		<div>✓</div>	linear		<div>0.X</div> <div>±0.50</div>		<div>0.XX</div> <div>±0.25</div>		<div>0.XXX</div> <div>±0.10</div>		<div></div>		title		32S + 11P		R/A PF RECEPTACLE		dwg no		51915-491		rev		A	
					angular		0°		±2°		www.fci.com		cat. no.		Product - Customer Drw		sheet 1 of 4									

PrintE File - REV C - 2009-06-09

PRODUCT NUMBER

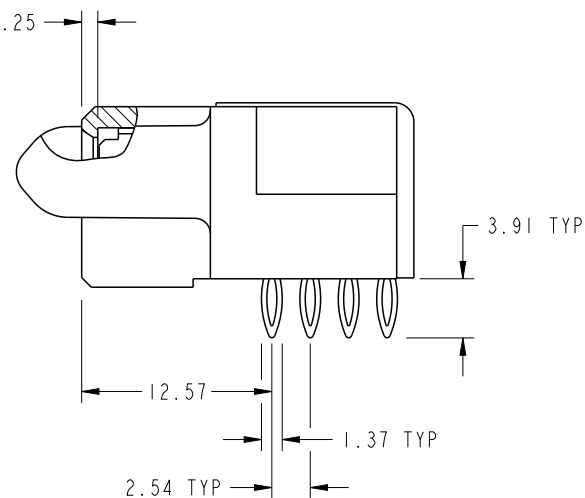
51915-491--  
NOTE 3

0.25 REF

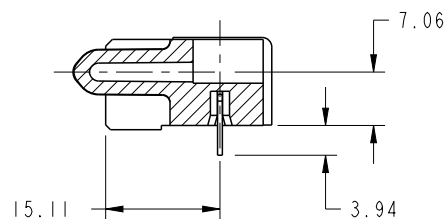


BROKEN-OUT SECTION A-A  
SCALE 2:1

DIM "M" ±0.25



BROKEN-OUT SECTION B-B  
SCALE 2:1



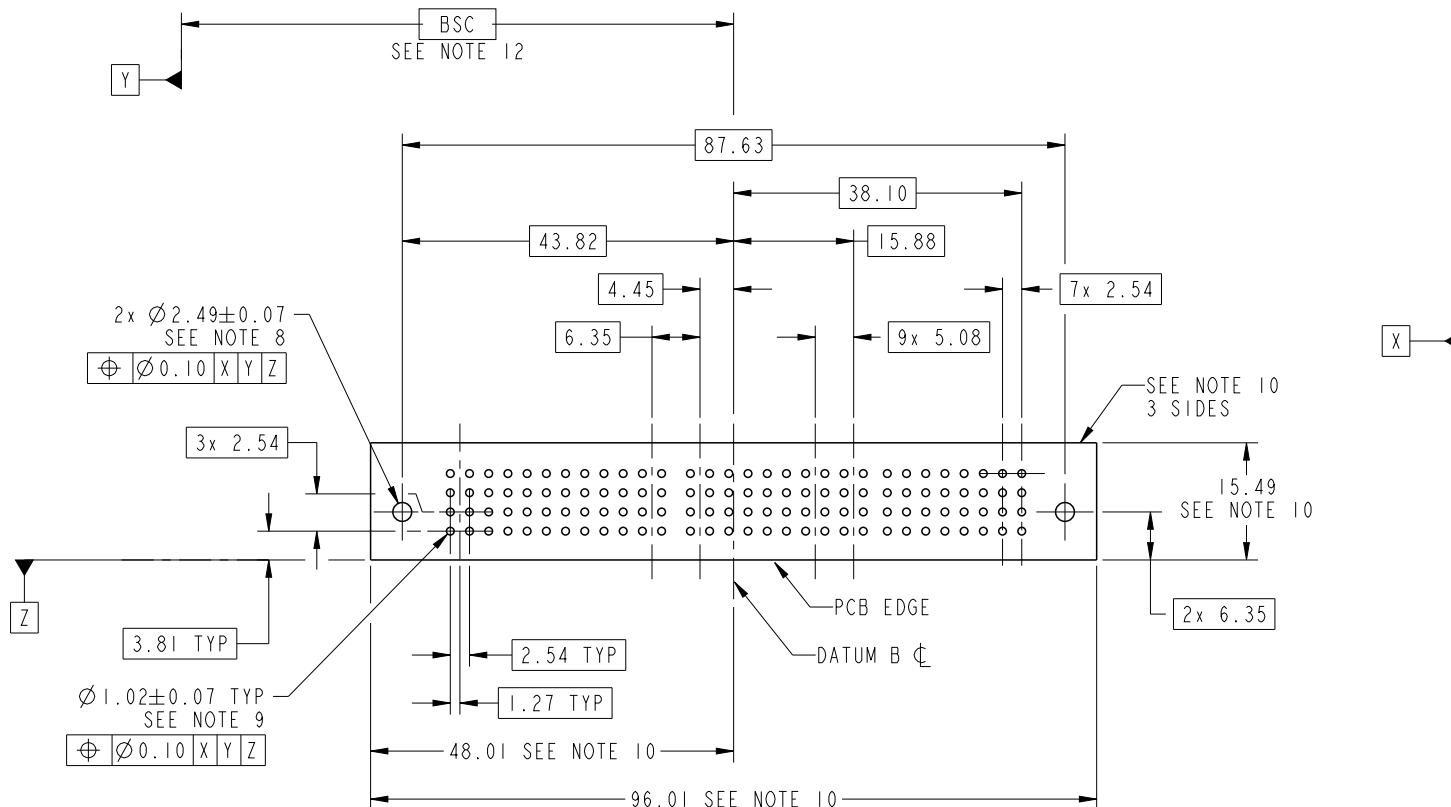
SECTION C-C

dr	Luo Weller	2015/04/15	projection	MM	size	A4	scale	1:1
eng	Luo Weller	2015/05/05			ecn no	-		
chr	-	-			rel level	Released		
appr	Pei-Ming Zheng	2015/05/05	product family	PwrBlade				
	title	32S + IIP R/A PF RECEPTACLE	dwg no	51915-491	rev	A		
www.fci.com	cat. no.		Product - Customer Drw		sheet 2 of 4			

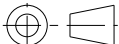


Pro/E File - REV C - 2009-06-09

# PRODUCT NUMBER

51915-491--  
NOTE 3



RECOMMENDED PCB LAYOUT

dr	Luo Weller	2015/04/15	<div>projection</div> <div></div>	<div>MM</div> <div></div>	size	A4	scale	1:1
eng	Luo Weller	2015/05/05			ecn no	-		
chr	-	-			rel level	Released		
appr	Pei-Ming Zheng	2015/05/05	product family		PwrBlade			
		title			32S + IIP	dwg no		rev
					R/A PF RECEPTACLE	51915-491		A
www.fci.com		cat. no.		Product - Customer Drw			sheet 3 of 4	



Copyright FCI.

PRODUCT NUMBER  
51915-491--  
NOTE 3

NOTES:

1. DIMENSIONS AND TOLERANCES ARE IN ACCORDANCE WITH  
ASME Y14.5M, 1994 UNLESS OTHERWISE SPECIFIED.

CONNECTOR NOTES:

- 2. HOUSING MATERIAL: UL 94 V-0 GLASS FILLED HIGH-TEMP THERMOPLASTIC  
POWER CONTACT MATERIAL: COPPER ALLOY  
SIGNAL PIN MATERIAL: COPPER ALLOY
  - 3. SEE ITEM 7 & 8 IN PRINT 10064183 FOR PLATING SPEC OF 51915-491 AND 51915-491LF RESPECTIVELY.
  - 4. MANUFACTURER'S NAME, DATE CODE AND OPTIONAL P/N TO APPEAR ON  
THIS SURFACE. THE MARK CAN BE OMITTED IF THERE IS NOT ENOUGH SPACE  
ON THIS SURFACE.
  - 5. PRODUCT SPECIFICATION GS-12-149.  
APPLICATION SPECIFICATION BUS-20-067.
  - 6. PACKAGED IN TRAYS.
- PCB NOTES:
- 7. ALL HOLE DIAMETERS ARE FINISHED HOLE SIZE.
  - 8. MOUNTING HOLES, WHERE APPLICABLE, ARE UNPLATED.
  - 9.  $\varnothing 1.151 \pm 0.025$  DRILLED HOLES PLATED WITH  
0.008 MIN SnPb OR Sn OVER 0.03  
TO 0.08 Cu PLATING TO ACHIEVE  
 $\varnothing 1.02 \pm .07$  HOLE.
  - 10. CONNECTOR KEEP-OUT ZONE.
  - 11. THE VOID CORING IN BETWEEN POWER MODULES, SIGNAL  
MODULES AND END MODULES ARE OPTIONAL AND THE SHAPE  
MAY BE DIFFERENT FOR OPTIMIZE THE MOLDING PROCESS. THE  
VOID CORING WILL NOT EFFECT TO PRODUCT FUNCTION.
  - 12. DATUM AND BASIC DIMENIONS ARE ESTABLISHED BY CUSTOMER.

dr	Luo Weller	2015/04/15	<div>projection</div> <div></div>	<div>MM</div> <div></div>	size	A4	scale	1:1
eng	Luo Weller	2015/05/05			ecn no	-		
chr	-	-						
appr	Pei-Ming Zheng	2015/05/05	product family		PwrBlade	rel level	Released	
	title				dwg no		rev	
	32S + IIP				51915-491		A	
	R/A PF RECEPTACLE							
www.fci.com	cat. no.		Product - Customer Drw				sheet 4 of 4	