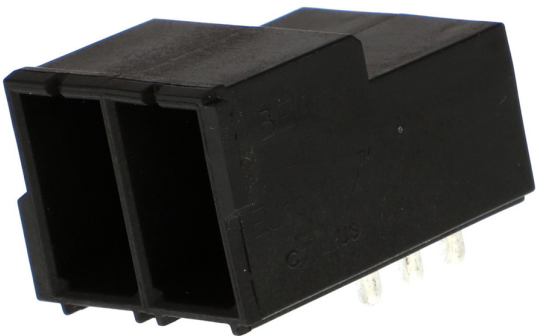





Part Number : 394250002
Product Description : 12.00mm Pitch Beau
EuroMax Right-Angle PCB Header, Closed
Ends, 2 Circuits
Series Number : 39425
Status : New Business Not Supported
Product Category : Terminal Blocks and
Barrier Strip
Engineering Number : 421902



Documents & Resources

Product Environment Compliance

Compliance

GADSL/IMDS	Not Relevant
China RoHS	
EU ELV	Not Relevant
Low-Halogen Status	Low-Halogen per IEC 61249-2-21
REACH SVHC	Not Contained per D(2024)6225-DC (07 Nov 2024)
EU RoHS	Compliant per EU 2015/863

Multiple Part Product Compliance Statements

- Eu RoHS
- REACH SVHC
- Low-Halogen

Multiple Part Industry Compliance Documents

- IPC 1752A Class C
- IPC 1752A Class D
- Molex Product Compliance Declaration
- IEC-62474
- chemSHERPA (xml)

EU RoHS Certificate of Compliance

Part Details

General

Status	New Business Not Supported
Category	Terminal Blocks and Barrier Strip
Series	39425
Description	12.00mm Pitch Beau EuroMax Right-Angle PCB Header, Closed Ends, 2 Circuits
Application	Wire-to-Board
Component Type	PCB Header
Product Name	EuroMax Pluggable
Type	PCB Terminal Blocks and Connectors
UPC	822348530359

Electrical

Current - Maximum per Contact	85.0A
Voltage - Maximum	600V

Physical

Circuits (Loaded)	2
Entry Angle	N/A
Lock to Mating Part	Yes
Material - Plating Mating	Tin
Material - Plating Termination	Tin
Net Weight	17.000/g
Number of Rows	1
Orientation	Right Angle
Panel Mount	No
PC Tail Length	4.30mm
PCB Retention	None
PCB Thickness - Recommended	3.20mm
Pitch - Mating Interface	12.00mm
Pitch - Termination Interface	12.00mm
Plating min - Mating	3.810µm

Plating min - Termination	3.810μm
Polarized to Mating Part	Yes
Shrouded	Closed Ends
Stackable	No
Temperature Range - Operating	130°C
Termination Interface Style	Through Hole
Wire Size (AWG)	N/A

This document was generated on Mar 08, 2025