



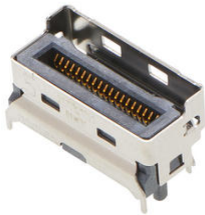
Part Number : [2170821021](#)

Product Description : Mini Cool Edge (MCIO)
Connector, Vertical, 4x PCIe Gen5, 38 Circuits, 0.75µm Gold (Au) Plated Contact, 1.50mm Solder Peg Length, 2.54µm Nickel Plated Shell, with Pick and Place Cap

Series Number : 217082

Status : Active

Product Category : High-Speed I/O Connectors




Documents & Resources

Drawings

[2170821021 sd.pdf](#)

Product Environment Compliance

Compliance

GADSL/IMDS	Not Relevant
China RoHS	 per SJ/T 11365-2006
EU ELV	Not Relevant
Low-Halogen Status	Low-Halogen per IEC 61249-2-21
REACH SVHC	Not Contained per D(2024)6225-DC (07 Nov 2024)
EU RoHS	Compliant per EU 2015/863

Compliance Statements

- EU RoHS
- REACH SVHC
- Low-Halogen

Industry Documents

- IPC 1752A Class C
- IPC 1752A Class D
- Molex Product Compliance Declaration
- IEC-62474
- chemSHERPA (xml)

Substances of Interest

- PFAS

[EU RoHS Certificate of Compliance](#)

[Additional Product Compliance Information](#)

Part Details

General

Status	Active
Category	High-Speed I/O Connectors
Series	217082
Description	Mini Cool Edge (MCIO) Connector, Vertical, 4x PCIe Gen5, 38 Circuits, 0.75µm Gold (Au) Plated Contact, 1.50mm Solder Peg Length, 2.54µm Nickel Plated Shell, with Pick and Place Cap
Application	Wire-to-Board
Component Type	Receptacle
Product Name	Mini Cool Edge (MCIO)
Type	Internal
UPC	196823561771

Electrical

Current - Maximum per Contact	1.1A
Data Rate	32.0 Gbps
Voltage - Maximum	30V AC (RMS)/DC

Physical

Circuits (Loaded)	38
Circuits (maximum)	38
Color - Resin	Black
Durability (mating cycles max)	200
Gender	Receptacle
Lock to Mating Part	Yes
Material - Metal	Copper Alloy
Material - Plating Mating	Gold
Material - Plating Termination	Gold

Material - Resin	High Temperature Thermoplastic
Number of Rows	2
Orientation	Vertical
Packaging Type	Embossed Tape on Reel
Panel Mount	No
PCB Locator	Yes
PCB Retention	Yes
Pitch - Mating Interface	0.60mm
Pitch - Termination Interface	0.60mm
Plating min - Mating	0.750µm
Plating min - Termination	0.025µm
Polarized to Mating Part	Yes
Polarized to PCB	Yes
Ports	1
Temperature Range - Operating	-40° to +85°C
Termination Interface Style	Surface Mount

Mates With / Use With

Mates with Part(s)

Description	Part Number
Mini Cool Edge (MCIO) Straight-to-Mini Cool Edge (MCIO) 8x Straight Cable Assemblies	<u>215070</u>
Mini Cool Edge (MCIO) 8x Cable Assemblies	<u>215073</u>

This document was generated on Jun 15, 2025