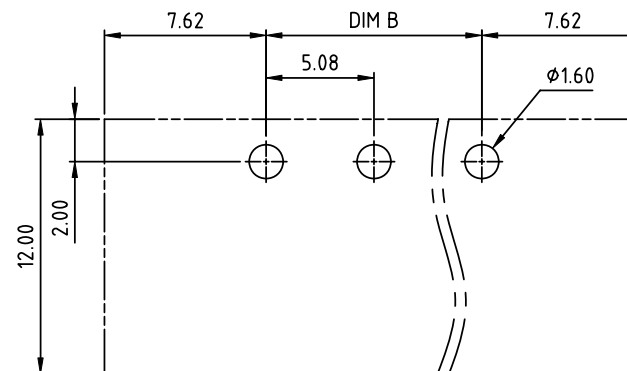
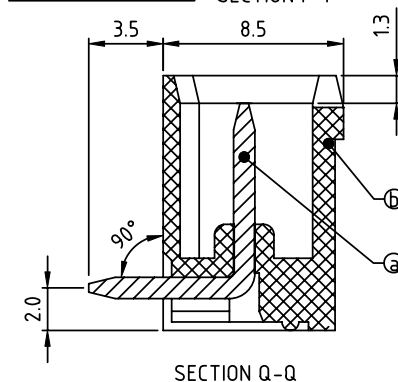
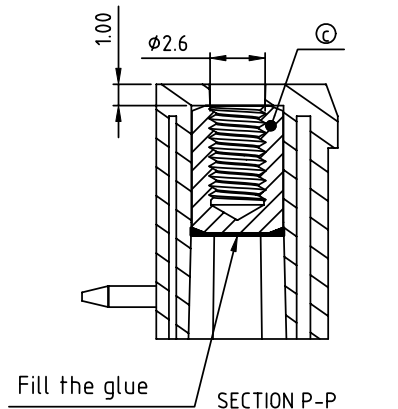
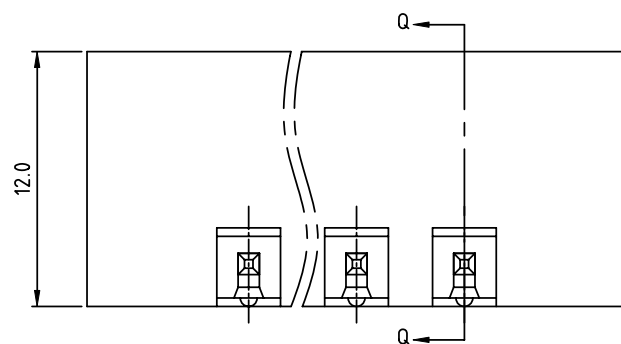
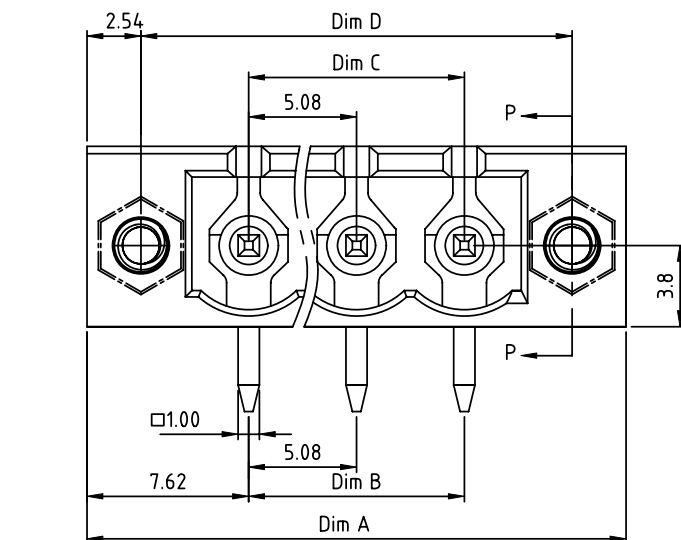


PRODUCT NUMBER	PITCH
0Qxx55x100J0G	5.08 mm



RECOMMENDED P.C.B LAYOUT
TOP VIEW

Material:

- Item ① Male contact pin: Copper Tin plated
- Item ② Terminal housing: Thermoplastic (UL94V-0)
- Item ③ Flange nut: Brass ,M2.5

Electrical:

- Voltage rating: 300V/300V/300V
- Current rating: 20A/20A/20A
- Withstanding Voltage: 1.6 KV/2.5KV/2.5KV
- Operating temperature: -40°C to +115°C
- Soldering temperature: 260°C±5°C/5 Sec
- Safety Approval: cULus /VDE /TUV

DIMENSION

Dim A	(N+2)×5.08
Dim B&C	(N-1)×5.08
Dim D	(N+1)×5.08

N = Number of poles

Poles	Tolerance
2-6p	±0.15
7-12p	±0.20
13-18p	±0.30
19-24p	±0.40

PART NO.: 0Q xx 5 5 x 1 00J0 G

No. of poles	Body Color	RoHS compliant
02 2 poles	0 Black (RAL9005)	(lead<4%)
03 3 poles	2 Red (RAL3001/D)	In copper Alloy
...	3 Orange(RAL2011/P)	
...	4 Yellow(RAL1018/A)	
24 24 poles	5 Green(RAL6018/T)	
	6 Blue (RAL5015/A)	
	8 Grey(RAL7035/D)	
	9 White(RAL1102)	
	C Green(RAL6018/U)	

mat'l. code				surface	tolerance	projection	product family
ltr	ecn	no	dr	date	ASME Y14.5	ASME Y14.5	TERMINAL BLOCK
					tolerances unless otherwise specified		
					angles	X.±0.5	title
					φ	X.X±0.3	TERMINAL BLOCK
					X°±1°	X.XX±0.1	PLUGGABLE SOCKET, WITH FLANGE, RIGHT ANGLE
					dr	HANKE FENG 040314	dwg no
					enr	HANKE FENG 040314	sheet 1 of 1
					chr	SHI JUN 040314	size
					appd	SHI JUN 040314	A4
sheet index	revision	A					type
	sheet	1					CUSTOMER Drawing