



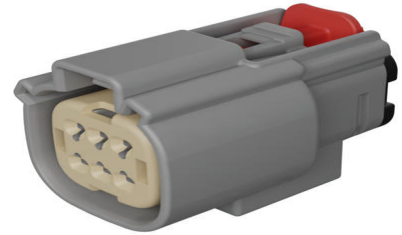
**Part Number :** [334720706](#)

**Product Description :** MX150 Mat-Sealed Female Connector Assembly, Dual Row, 6 Circuits, Keying Option B, with Connector Position Assurance, with Clipslot, Light Gray

**Series Number :** 33472

**Status :** Active

**Product Category :** Connector Housings



---

## Documents and Resources

### Drawings

[334720706 sd.pdf](#)

[PK-31300-903-001.pdf](#)

### 3D Models and Design Files

[STEP AP242](#)

[SOLIDWORKS](#)

[Creo](#)

### Specifications

[AS-33472-100-001.pdf](#)

[AS-33472-100-CH-001.pdf](#)

[AS-33472-100-FR-001.pdf](#)

[AS-33611-001-001.pdf](#)

[PS-33472-000-001.pdf](#)

---

## Product Environment Compliance

### Compliance

GADSL/IMDS	Compliant
China RoHS	Not Relevant
EU ELV	Compliant per 2000/53/EC
Low-Halogen Status	Not Relevant
REACH SVHC	Contains Dodecamethylcyclohexasiloxane;

	Decamethylcyclopentasiloxane; Octamethylcyclotetrasiloxane per D(2025)4165-DC (25 June 2025)
EU RoHS	Compliant per EU 2015/863

### Compliance Statements

- EU RoHS
- REACH SVHC
- Low-Halogen

### Industry Documents

- IPC 1752A Class C
- IPC 1752A Class D
- Molex Product Compliance Declaration
- IEC-62474
- chemSHERPA (xml)

### Substances of Interest

- PFAS

### EU RoHS Certificate of Compliance

### Additional Product Compliance Information

## Part Details

### General

Status	Active
Category	Connector Housings
Series	33472
Description	MX150 Mat-Sealed Female Connector Assembly, Dual Row, 6 Circuits, Keying Option B, with Connector Position Assurance, with Clipslot, Light Gray
Application	Power, Wire-to-Board, Wire-to-Wire, Automotive
Product Name	MX150
UPC	883906210823

### Agency

UL	E29179
----	--------

### Physical

Circuits (maximum)	6
Color - Resin	Gray (Light)
Gender	Receptacle
Glow-Wire Capable	No
Keying to Mating Part	Yes
Lock to Mating Part	Yes
Material - Resin	SPS/Nylon
Net Weight	10.507/g
Number of Rows	2
Packaging Type	Partitioned Carton
Panel Mount	No
Pitch - Mating Interface	3.50mm
Polarized to Mating Part	Yes
Stackable	No
Temperature Range - Operating	-40° to +125°C

### Solder Process Data

Lead-Free Process Capability	N/A
------------------------------	-----

---

### Mates With / Use With

#### Mates with Part(s)

Description	Part Number
MX150 2x4 Dual Row Right-Angle Header, 8 Circuits, Keying Option A, Black, Solder Tail	<a href="#">348300801</a>
MX150 Male Connector Assembly, Bulkhead Twist-Lock, Mat-Sealed Compatible, Dual Row, 6 Circuits, Keying Option B, Light Gray	<a href="#">348403420</a>
MX150 Mat-Sealed Dual Row Male Connector Assemblies	<a href="#">33482</a>

#### Use with Part(s)

Description	Part Number
MX150 Sealed Receptacle Cavity Plug	<a href="#">343454001</a>

MX150 Backshell for Male Sealed Connector Assembly, 6 Circuit, without Rib	<u>349500620</u>
MX150 Backshell for Female Sealed Connector Assembly, 6 Circuit, with Rib	<u>349510610</u>
MX150 Female Terminals	<u>33001</u>
MX150 Female Terminals	<u>33012</u>

---

This document was generated on Jan 01, 2026