

# Product Data Sheet

DIN 41612 straight spring-loaded connector, Type G,  
Part No. 112-40065

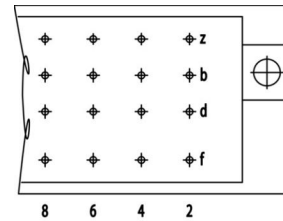
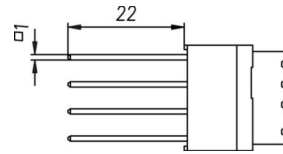


Illustration similar



Perpendicular



Through Hole



Power



Rugged

- Connection length: 22 mm
- Terminal side tin-plated for wire wrap
- Number of poles: 64
- Soldering Techniques
- Grade 2



» to product on [www.ept.de](http://www.ept.de)



» to product group DIN 41612

# Product Data Sheet

DIN 41612 straight spring-loaded connector, Type G,  
Part No. 112-40065



## Technical Specifications

### Basics

Specification	IEC 60603-2 (DIN 41612)
Performance Level	2
No. of Contacts	64
Termination Technology	Soldering Techniques
Termination Length	22 mm
Operating Temperature Range	-55°C to +125°C

### Material

Insulator Material	Glass-fiber-reinforced PBT, UL 94 V-0
CTI value <i>IEC 60112</i>	200
Contact Material	copper alloy

### Mechanical

Pitch	5.08 x 3.81 mm
Mating Force	100 N
Separating Force per Pin	>0.2 N
Durability	400 insertion cycles

### Electrical

Operational Current	5.6 A
Contact Resistance	15 mΩ
Clearance and Creepage	W: ≥ 3.0 mm, L: ≥ 1.6 mm
Insulation Resistance	>10 <sup>6</sup> MΩ
Test Voltage	1550 V

### Processing

Soldering Temperature	up to 260°C
-----------------------	-------------

### Approval / Compliance

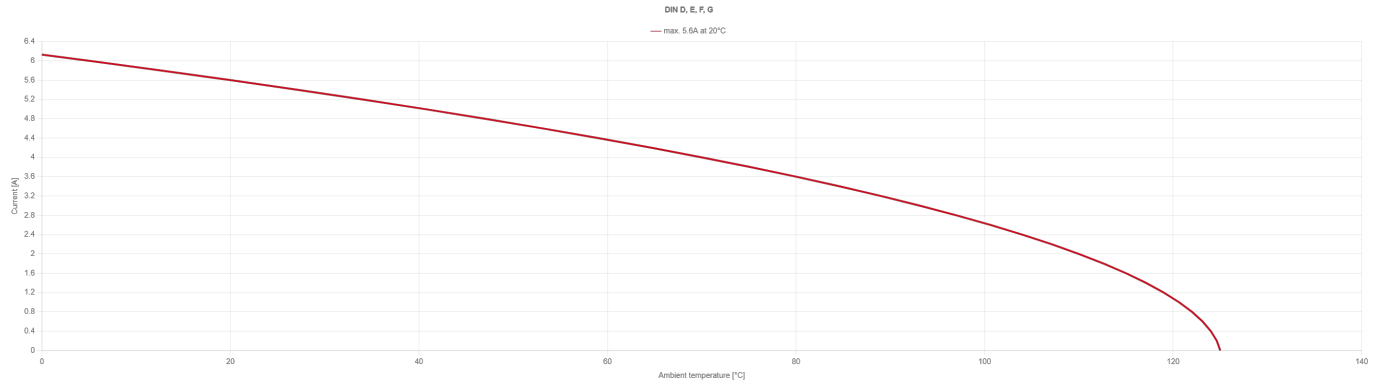
UL file	E130314
Environment	RoHS compliant

# Product Data Sheet

DIN 41612 straight spring-loaded connector, Type G,  
Part No. 112-40065



## Derating Diagram



# Product Data Sheet

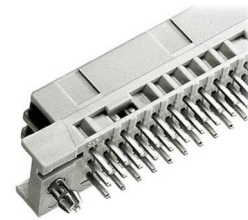
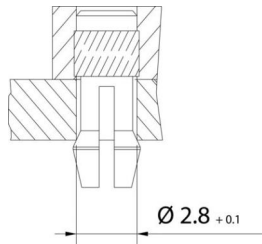
DIN 41612 straight spring-loaded connector, Type G,  
Part No. 112-40065



## Options

### Board Lock

Suitable for connectors with type B, C, D, E, F low profile, G low profile, M female connectors and R male connectors



Type of Insertion	Forces			Part Number	PCB Thickness
	$F_m$	not soldered $F_h$	soldered $F_h$		
Locked	< 20 N	> 10 N	> 25 N	112-40065C1	1.6 mm
Under Tension	< 20 N	> 5 N	> 25 N	112-40065C2	2.4 mm
				112-40065C3	3.6 mm

## Modifications

Available on request

- without mounting flange
- Special lengths for connections
- Grade I + III or custom
- Special configuration

## Drawings

Component data in 2D and 3D format you can download here:

» [PDF](#)

» [3D IGES](#)

» [3D STEP](#)

» [3D PDF](#)