

SERIES 28 HiPer-D® Accessories



Band-Master™ ATS tool and bands for termination of cable braid 600-058 tool, 600-052 and 600-090 band straps

BAND-MASTER™ ATS TOOL AND BANDS

Fast, cost-effective shield termination. Attach cable shields to backshells with **Band-Master™ ATS** 300 series SST/passivate I.A.W. AMS 2700. The **Band-Master™ ATS** system offers fast termination and the flexibility to handle a wide range of parts with just one band size. Approved for aerospace and defense, these straps have successfully passed rigorous shock, vibration and environmental testing.



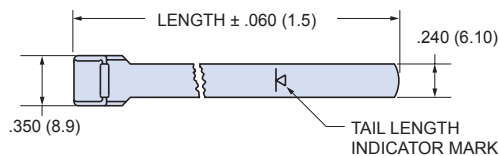
1 Band installation Tool. Use with .240" (6.10 mm) wide bands. 6.75 inches (172 mm) length, 1.2 pounds (0.6 Kg.)

2 Standard Band, .240" (6.10 mm) wide. Available in two lengths, flat or pre-coiled. Stainless steel.

Figure	Description	Part Number
1	Band installation Tool	600-058

Figure	Length		Part Number		Accommodates Diameter	
	in.	mm	Flat	Pre-Coiled	in.	mm
2	14.250	362.1	600-052	600-052-1	1.8	45.7
2	18.000	457.2	600-090	600-090-1	2.5	63.5

Contact Glenair or visit our website (glenair.com) to view our complete line of **Band-Master™ ATS** products, including pneumatic tools for high volume production and calibration kits.



BAND-MASTER™ ATS SHIELD TERMINATION INSTRUCTIONS

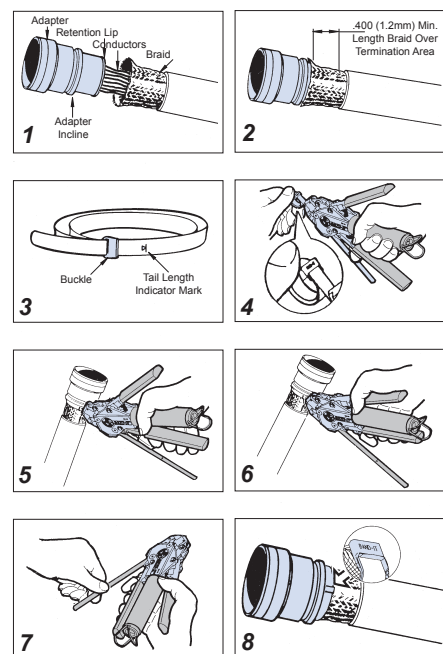
1. Prepare Cable Braid for termination process (Figure 1).
2. Push Braid forward over Adapter Retention Lip to the Adapter Incline Point (or .4" [10.2mm] minimum braid length). Milk Braid as required to remove slack and insure a snug fit around the shield termination area (Figure 2).
3. Prepare the Band in the following manner:
IMPORTANT: Due to Connector/Adapter circumference, it may be necessary to prepare the Band around the Cable or Retention Area.
A. Roll Band through the Buckle Slot twice. (Bands must be double-coiled.)
B. Pull on Band until Mark (▶) is within approximately .250 inch (6.4mm) of Buckle Slot (Figure 3). The Band may be tightened further if desired.

NOTE: Prepared Band should have (▶) Mark visible approximately where shown in Figure 3.

Shield Termination Clamping Process (Figures 4 thru 8)

NOTE: To free Tool Handles, move Holding Clips to center of Tool.

4. Squeeze Gripper Release Lever and insert Band into the front end opening of the Tool. (NOTE: Circular portion of looped band must always face downward.)
5. Aligning the Band and Tool with the Shield Termination Area, squeeze Black Pull-Up Handle repeatedly using short strokes until it locks against Tool Body. (This indicates the Band is compressed to the Tool Precalibrated Tension.)
NOTE: If alignment of band and shield is unsatisfactory, tension on band can be relaxed by pushing on slotted release lever on top of tool. Make adjustments as necessary and again squeeze black pull-up handle.
6. Complete the Clamping Process by squeezing the Gray Cut-Off Handle.
7. Remove excess band from tool and dispose.
8. Inspect Shield Termination.



F