

ON Semiconductor

Is Now



To learn more about onsemi™, please visit our website at
www.onsemi.com

onsemi and **onsemi** and other names, marks, and brands are registered and/or common law trademarks of Semiconductor Components Industries, LLC dba "**onsemi**" or its affiliates and/or subsidiaries in the United States and/or other countries. **onsemi** owns the rights to a number of patents, trademarks, copyrights, trade secrets, and other intellectual property. A listing of **onsemi** product/patent coverage may be accessed at www.onsemi.com/site/pdf/Patent-Marking.pdf. **onsemi** reserves the right to make changes at any time to any products or information herein, without notice. The information herein is provided "as-is" and **onsemi** makes no warranty, representation or guarantee regarding the accuracy of the information, product features, availability, functionality, or suitability of its products for any particular purpose, nor does **onsemi** assume any liability arising out of the application or use of any product or circuit, and specifically disclaims any and all liability, including without limitation special, consequential or incidental damages. Buyer is responsible for its products and applications using **onsemi** products, including compliance with all laws, regulations and safety requirements or standards, regardless of any support or applications information provided by **onsemi**. "Typical" parameters which may be provided in **onsemi** data sheets and/or specifications can and do vary in different applications and actual performance may vary over time. All operating parameters, including "Typicals" must be validated for each customer application by customer's technical experts. **onsemi** does not convey any license under any of its intellectual property rights nor the rights of others. **onsemi** products are not designed, intended, or authorized for use as a critical component in life support systems or any FDA Class 3 medical devices or medical devices with a same or similar classification in a foreign jurisdiction or any devices intended for implantation in the human body. Should Buyer purchase or use **onsemi** products for any such unintended or unauthorized application, Buyer shall indemnify and hold **onsemi** and its officers, employees, subsidiaries, affiliates, and distributors harmless against all claims, costs, damages, and expenses, and reasonable attorney fees arising out of, directly or indirectly, any claim of personal injury or death associated with such unintended or unauthorized use, even if such claim alleges that **onsemi** was negligent regarding the design or manufacture of the part. **onsemi** is an Equal Opportunity/Affirmative Action Employer. This literature is subject to all applicable copyright laws and is not for resale in any manner. Other names and brands may be claimed as the property of others.

CM6320

EMI Filter with ESD Protection for SIM Card Applications

Product Description

The CM6320 is a 24-bump EMI filter with ESD protection device for data line application in a 0.4 mm pitch, 5 x 5 CSP form factor. It is fully compliant with IEC 61000-4-2. The CM6320 is RoHS II compliant.

Features

- 24-Bump, 1.96 mm X 1.96 mm Footprint Chip Scale Package
- These Devices are Pb-Free and are RoHS Compliant



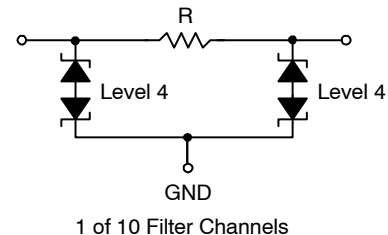
ON Semiconductor®

<http://onsemi.com>

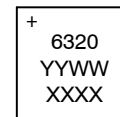


**WLCSP24
CASE 567CK**

ELECTRICAL SCHEMATIC



MARKING DIAGRAM



6320 = CM6320
YYWW = Date Code
XXXX = Last four digits of lot #

ORDERING INFORMATION

Device	Package	Shipping†
CM6320	CSP-24 (Pb-Free)	5000/Tape & Reel

†For information on tape and reel specifications, including part orientation and tape sizes, please refer to our Tape and Reel Packaging Specification Brochure, BRD8011/D.

CM6320

PACKAGE / PINOUT DIAGRAMS

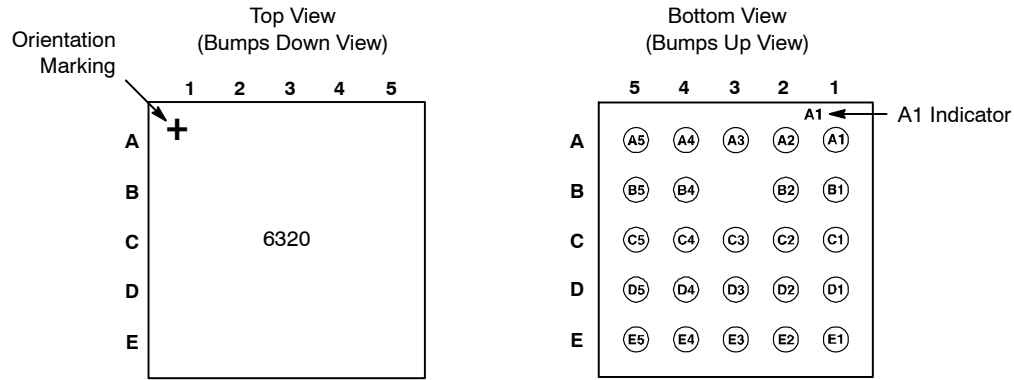


Table 1. PIN DESCRIPTIONS

A5 = Line 1	A4 = Line 2	A3 = GND	A2 = Line 1	A1 = Line 2
B5 = Line 3	B4 = Line 4		B2 = Line 3	B1 = Line 4
C5 = Line 5	C4 = Line 6	C3 = GND	C2 = Line 5	C1 = Line 6
D5 = Line 7	D4 = Line 8	D3 = GND	D2 = Line 7	D1 = Line 8
E5 = Line 9	E4 = Line 10	E3 = GND	E2 = Line 9	E1 = Line 10

ELECTRICAL SPECIFICATIONS AND CONDITIONS

Table 2. PARAMETERS AND OPERATING CONDITIONS

Parameter	Rating	Units
Storage Temperature Range	-55 to +150	°C
Operating Temperature Range	-40 to +85	°C
Power Dissipation at 70°C per Channel	60	mW

Table 3. ELECTRICAL OPERATING CHARACTERISTICS (Note 1)

Symbol	Parameter	Conditions	Min	Typ	Max	Units
R	Resistance		56	70	84	Ω
C	Capacitance per Line	At 1 MHz, $V_{IN} = 0$ V; (Note 2)			30	pF
V_{BR}	Breakdown Voltage	$I_R = \pm 1$ mA	±6	±7.8	±10	V
I_{LEAK}	Leakage Current per Channel	$V_{IN} = 3.0$ V		10	100	nA
V_{ESD}	ESD Protection Peak Discharge Voltage a) Contact Discharge per IEC 61000-4-2 standard b) Air Discharge per IEC 61000-4-2 standard	(Notes 2 and 3)	±15 ±15			kV

1. All parameters specified at $T_A = 25^\circ\text{C}$ unless otherwise noted.
2. These parameters guaranteed by design and characterization.
3. Standard IEC 61000-4-2 with $C_{Discharge} = 150$ pF, $R_{Discharge} = 330$ Ω.

CM6320

RF CHARACTERISTICS

$T_A = 25^\circ\text{C}$, DC Bias = 0 V, 50 Ω Environment

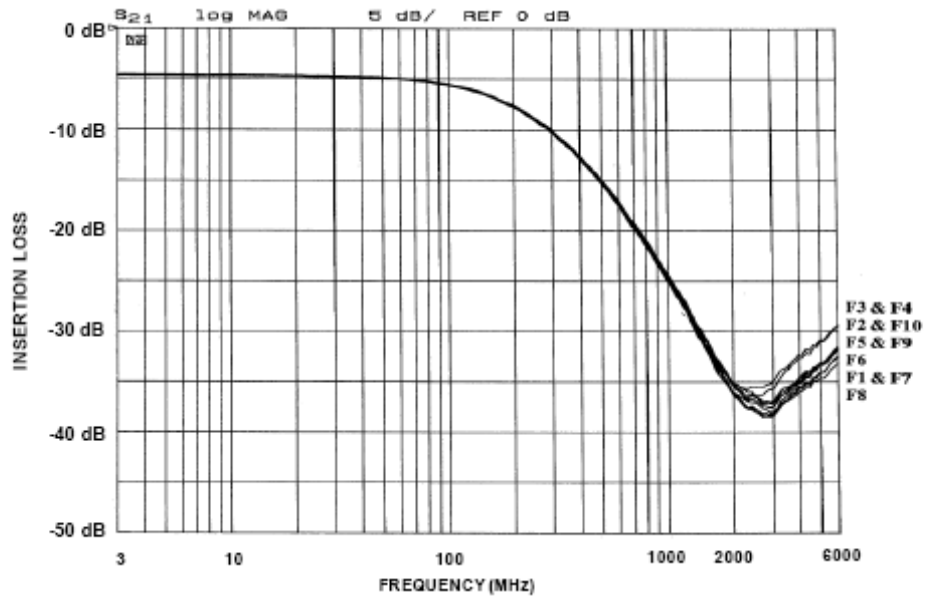


Figure 1. Insertion Loss (0 V Bias)

