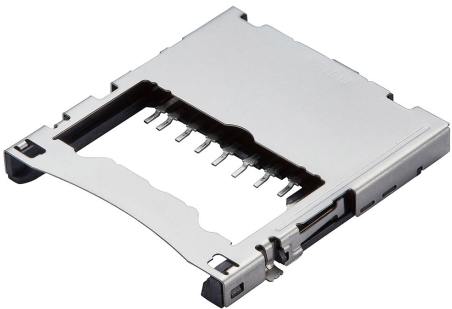





Part Number : [5009980900](#)
Product Description : 2.50mm Pitch SD Memory Card Connector, Shielded, Top Mount, Push-Push Ejector, Embossed Tape Packaging
Series Number : 500998
Status : New Business Not Supported
Product Category : Memory / SIM Card Connectors



Documents & Resources

Product Environment Compliance

Compliance

GADSL/IMDS	Not Relevant
China RoHS	
EU ELV	Not Relevant
Low-Halogen Status	Low-Halogen per IEC 61249-2-21
REACH SVHC	Not Contained per D(2023)3788-DC (14 Jun 2023)
EU RoHS	Compliant per EU 2015/863

Multiple Part Product Compliance Statements

- Eu RoHS
- REACH SVHC
- Low-Halogen

Multiple Part Industry Compliance Documents

- IPC 1752A Class C
- IPC 1752A Class D
- Molex Product Compliance Declaration
- IEC-62474
- chemSHERPA (xml)

EU RoHS Certificate of Compliance

Part Details

General

Status	New Business Not Supported
Category	Memory / SIM Card Connectors
Series	500998
Description	2.50mm Pitch SD Memory Card Connector, Shielded, Top Mount, Push-Push Ejector, Embossed Tape Packaging
Product Family	SD and SIM Memory Card Sockets
Product Name	SD Card
Style	Push-Push
UPC	822348660223

Agency

UL	E29179
----	--------

Electrical

Current - Maximum per Contact	0.5A
Shielded	Yes
Voltage - Maximum	100V AC

Physical

Card Detection Switch	Open
Circuits (Loaded)	9
Color - Resin	Black
Durability (mating cycles max)	10000
Ejector Button Side	N/A
Flammability	94V-0
Material - Contact	Copper Alloy
Material - Plating Termination	Gold, Tin
Material - Resin	High Temperature Thermoplastic
Net Weight	1973.271/mg
Packaging Type	Embossed Tape on Reel
PCB Locator	Yes
PCB Retention	Yes
Pitch - Mating Interface	2.50mm
Temperature Range - Operating	-25° to +90°C

Termination Interface Style	Surface Mount
-----------------------------	---------------

This document was generated on Feb 26, 2024