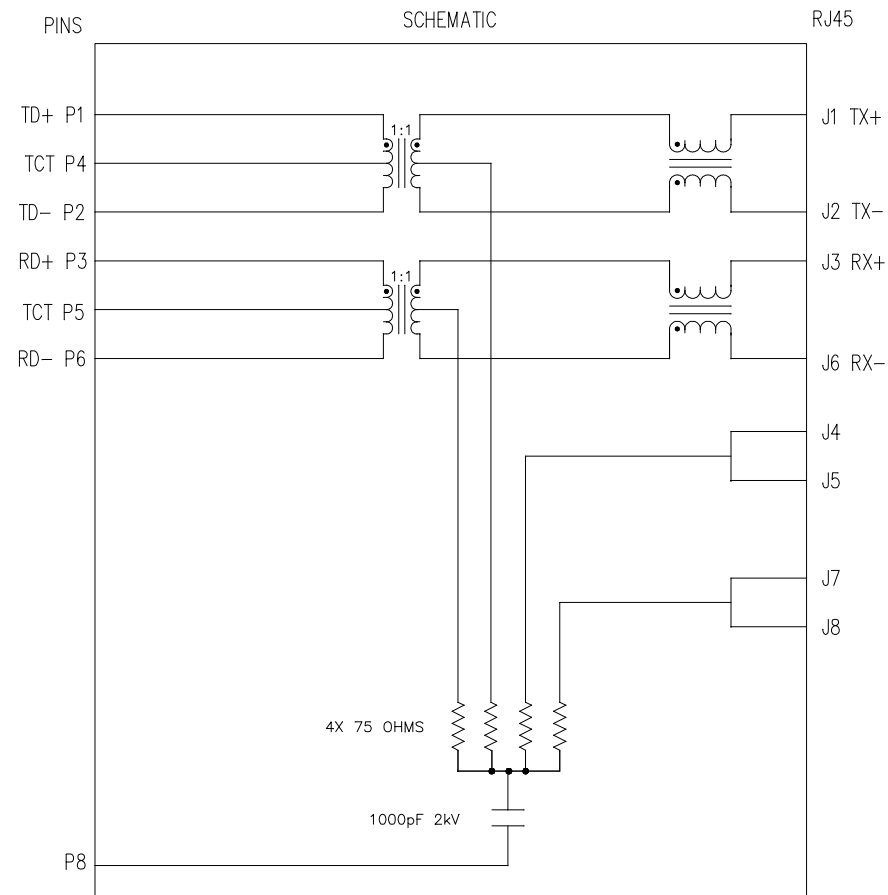


### ELECTRICAL CHARACTERISTICS @ 25°C

1.0	Turns Ratio: (P3-P5-P6) : (J3-J6) (P1-P4-P2) : (J1-J2)	: 1CT : 1CT± 3% : 1CT : 1CT ± 3%
2.0	Inductance: (P1-P2) (P3-P6)	: 350uH MIN. @ 0.1V, 100KHz, 8mA DC Bias : 350uH MIN. @ 0.1V, 100KHz, 8mA DC Bias
3.0	Leakage Inductance: P6-P3 (WITH J6 AND J3 SHORT) P2-P1 (WITH J2 AND J1 SHORT)	: 0.3 MAX. @ 1MHz : 0.3 MAX. @ 1MHz
4.0	Interwinding Capacitance: (P6,P5,P3) TO (J6,J3) (P2,P4,P1) TO (J2,J1)	: 30pf MAX @ 1MHz : 30pf MAX. @ 1MHz
5.0	DC Resistance: (J6-J3)=(J2-J1)	: 1.2 ohms Max.
6.0	Return Loss: (P6-P4)=100 OHMS AND (P1-P2)=100 OHM REF. 1MHz TO 30MHz 60MHz TO 80MHz	: 18dB MIN. : 12dB MIN.
NOTE: 100 OHMS CONNECTED TO (J2-J1) OR (J6-J3).		
7.0	Dielectric Withstand: (J1, J2) TO (P1, P2) (J3, J6) TO (P3, P6)	: 1500 Vrms : 1500 Vrms
8.0	Insertion Loss: RS=RL=100 ohms 100KHz TO 100MHz	: 1.1 dB TYP
9.0	Rise Time: RS=100 OHMS AND RL = 100 OHMS Output Voltage = 1 V peak Pulse Width= 112nS	: 3.0 nS MAX : 3.0 nS MAX
10.0	Cross Talk: 1MHz TO 100MHz	: 40 dB TYP
11.0	Common to Common Mode Attenuation: 30MHz TO 100MHz	: 35dB TYP
12.0	Operating Temperature	: 0°C TO 70°C

#### RECEIVE

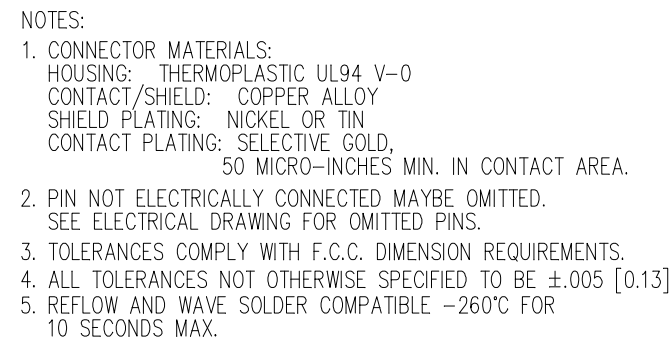



#### NOTES

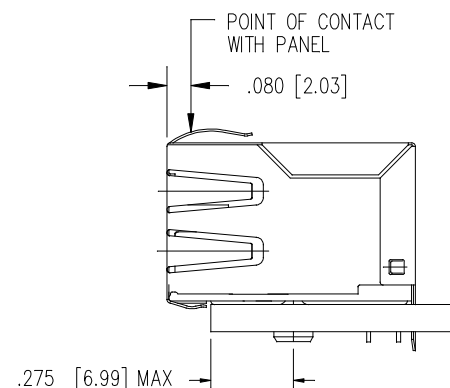
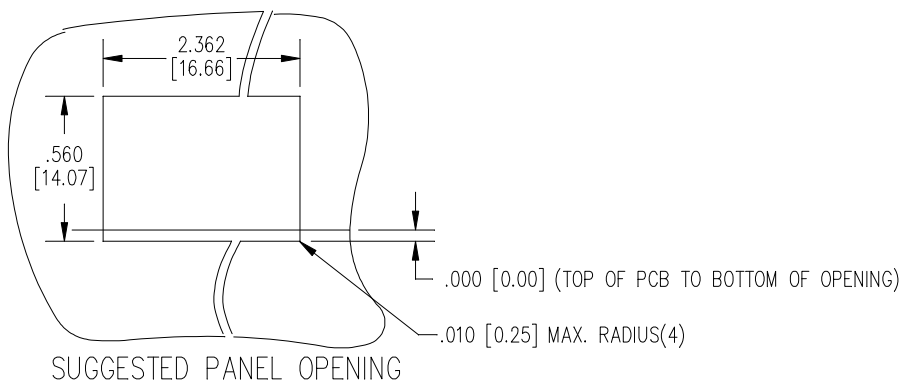
1.0 PINS WITHOUT ELECTRICAL CONNECTION ARE OMITTED.

ORIGINATED BY Bain Liu	DATE 09-27-08	TITLE <b>MagJack®</b> 10/100BT TAB DOWN, SHIELDED	PART NO. / DRAWING NO. SI-60066-F	STANDARD DIM. TOL. IN INCH .X .XX .XXX ±0.005	[ ] METRIC DIM. AS REFERENCE UNIT : INCH [mm] SCALE : N/A PAGE : 1	REV. : A0 SIZE : A4	bel COMPONENTS OR A PLANET
DRAWN BY LW Yuan	DATE 09-27-08		FILE NAME SI-60066-F.DWG				

**RoHS**  
2002/95/EC



ORIGINATED BY	DATE	TITLE <div>MagJack®</div> <div>10/100BT</div> <div>TAB DOWN, SHIELDED</div>	PART NO. / DRAWING NO.	STANDARD DIM.		[ ] METRIC DIM. AS REFERENCE		<div>bel</div> <div>COMPONENTS OF A CONNECTED PLANET</div>
Bain Liu	09-27-08		SI-60066-F	TOL. IN INCH		UNIT : INCH [mm]	REV. : A0	
DRAWN BY	DATE		FILE NAME	.X		SCALE : N/A	SIZE : A4	
LW Yuan	09-27-08		SI-60066-F.DWG	.XX			PAGE : 2	
			.XXX	±0.005				



1. THE SUGGESTED PANEL OPENING IS INTENDED TO GIVE THE USER THE ABILITY TO HAVE REASONABLE JACK / PANEL CLEARANCES YET MAINTAIN RELIABLE GROUNDING CAPABILITY.
2. ALL TOLERANCES NOT OTHERWISE SPECIFIED TO BE  $\pm 0.005$  [0.13]

ORIGINATED BY	DATE	TITLE <div>MagJack®</div> <div>10/100BT</div> <div>TAB DOWN, SHIELDED</div>	PART NO. / DRAWING NO.	STANDARD DIM.		[ ] METRIC DIM. AS REFERENCE		<div>bel</div> <div>COMPONENTS FOR A CONNECTED PLANET</div>	
Bain Liu	09-27-08		SI-60066-F	TOL. IN INCH		UNIT : INCH [mm]			REV. : A0
DRAWN BY	DATE		FILE NAME	.X		SCALE : N/A			SIZE : A4
LW Yuan	09-27-08		SI-60066-F.DWG	.XX		PAGE : 3			
				.XXX ±0.005		