



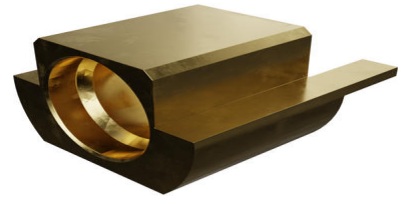
Part Number : [734155740](#)

Product Description : SMP Plug, Straight, Smooth Bore, PCB, Edge Mount, Tape and Reel, 50 Ohms

Series Number : 73406

Status : Active

Product Category : RF / Coaxial Connectors



Documents and Resources

Drawings

[734155740_sd.pdf](#)

[STEP AP242](#)

[SOLIDWORKS](#)


[Creo](#)

Specifications

[PS-89675-332-001.pdf](#)

Product Environment Compliance

Compliance

| | |
|--------------------|---|
| GADSL/IMDS | Not Relevant |
| China RoHS |  per SJ/T 11365-2006 |
| EU ELV | Not Relevant |
| Low-Halogen Status | Low-Halogen per IEC 61249-2-21 |
| REACH SVHC | Contains Lead per D(2025)4165-DC (25 June 2025) SCIP: |
| EU RoHS | Compliant with Exemption 6(c) per EU 2015/863 |

Compliance Statements

- EU RoHS
- REACH SVHC
- Low-Halogen

Industry Documents

- IPC 1752A Class C

- IPC 1752A Class D
- Molex Product Compliance Declaration
- IEC-62474
- chemSHERPA (xml)

Substances of Interest

- PFAS

EU RoHS Certificate of Compliance

Additional Product Compliance Information

Part Details

General

| | |
|--------------|--|
| Status | Active |
| Category | RF / Coaxial Connectors |
| Series | 73406 |
| Description | SMP Plug, Straight, Smooth Bore, PCB, Edge Mount, Tape and Reel, 50 Ohms |
| Application | RF |
| Product Name | SMP |
| Style | PCB |
| Type | Subminiature |
| UPC | 822350574228 |

Electrical

| | |
|-----------------|-----------------------------|
| Frequency | 40 GHz |
| Impedance | 50Ω |
| Power / Voltage | VOLTAGE: 335 Vrms@Sea Level |

Physical

| | |
|-----------------------|-----------------------|
| Cable Attachment | N/A |
| Gender | Plug |
| Keying to Mating Part | N/A |
| Net Weight | 0.699/g |
| Orientation | Straight |
| Packaging Type | Embossed Tape on Reel |
| Panel Mount | No |

| | |
|-----------------------------|------------|
| Panel Mount Method | N/A |
| PCB Mounting | Edge Mount |
| PCB Thickness - Recommended | 1.68mm |
| Reverse Polar | No |
| Wire/Cable Type | N/A |

This document was generated on Dec 30, 2025