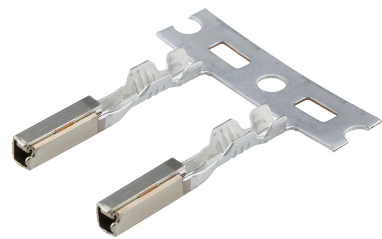




Part Number : [334670004](#)
Product Description : 2.54mm Pitch MX64
Terminal, Gold (Au) Plating, 22 AWG, Left Reel
Payoff, Also used with MX123 Female
Receptacle Housing
Series Number : 33467
Status : Active
Product Category : Crimp Terminals



Documents & Resources

Drawings
[334670004_sd.pdf](#)
[PK-30907-759-001.pdf](#)
[PK-31302-480-001.pdf](#)

Specifications
[AS-33468-001-001.pdf](#)
[PS-33468-001-001.pdf](#)

Product Environment Compliance

Compliance

GADSL/IMDS	Compliant with Exemption 44; 34; 33
China RoHS	Not Relevant
EU ELV	Compliant per 2000/53/EC
Low-Halogen Status	Not Relevant
REACH SVHC	Not Contained per D(2024)6225-DC (07 Nov 2024)
EU RoHS	Compliant per EU 2015/863

Multiple Part Product Compliance Statements
- Eu RoHS
- REACH SVHC
- Low-Halogen

Multiple Part Industry Compliance Documents
- IPC 1752A Class C
- IPC 1752A Class D

- Molex Product Compliance Declaration
- IEC-62474
- chemSHERPA (xml)

EU RoHS Certificate of Compliance

Part Details

General

Status	Active
Category	Crimp Terminals
Series	33467
Description	2.54mm Pitch MX64 Terminal, Gold (Au) Plating, 22 AWG, Left Reel Payoff, Also used with MX123 Female Receptacle Housing
Application	Automotive, Power, Wire-to-Board, Wire-to-Wire
Comments	Left Reel Payoff
Product Name	MX123,MX64
UPC	756054764053

Physical

Gender	Female
Material - Metal	Copper
Material - Plating Mating	Gold
Net Weight	0.225/g
Packaging Type	Reel
Plating min - Mating	0.762µm
Termination Interface Style	Crimp or Compression
Wire Insulation Diameter	1.50-2.06mm
Wire Size (AWG)	22
Wire Size mm ²	N/A

Solder Process Data

Lead-Free Process Capability	N/A
------------------------------	-----

Use with Part(s)

Description	Part Number
MX64 Sealed Single Row Receptacle Housings	<u>31403</u>
MX123 Receptacle Housings	<u>34566</u>
MX123 Female Receptacle Housings	<u>34576</u>

Application Tooling

Global

Description	Part Number
FA2 Mechanical Feed Crimp Applicator for MX64 Grip Terminals, 22 AWG	<u>638088300</u>
PremiumGrade Hand Crimp Tool for 2.54mm MX64 Terminals, 22-18 AWG	<u>638114200</u>
Extraction Tool for SPOX, MX64, Ditto, MX150CE, Milli-Grid Terminals	<u>638131400</u>

This document was generated on Mar 09, 2025